

REV	LOCATIONS	DESCRIPTION	DATE	REVISER	APPD
1		Update version	02/AUG/17	LXF	VERNON
2	△	Add the "TXGA" logo	26/OCT/18	KATE	ANDY

Electrical

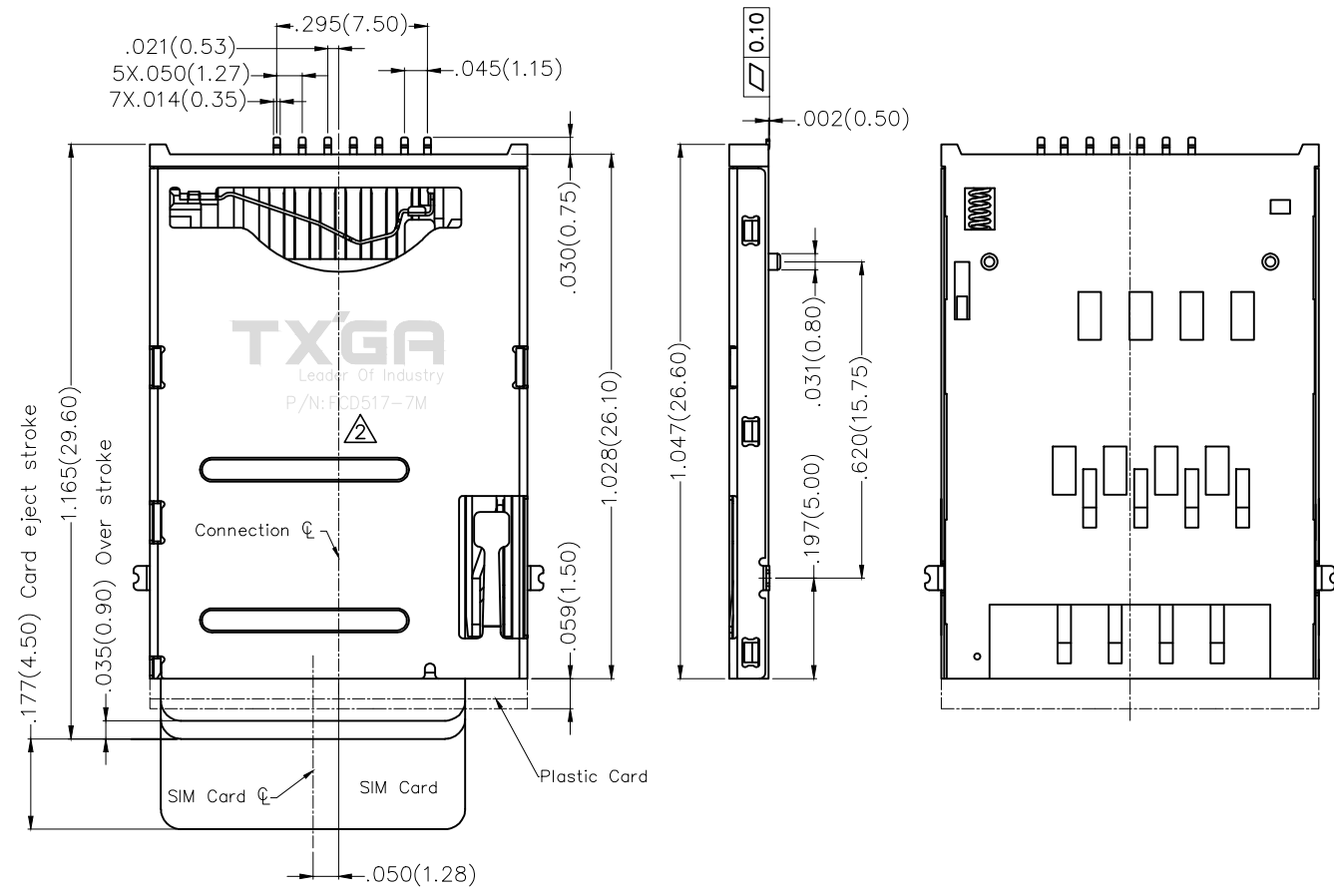
Current Rating: 0.5A AC(rms)/DC
Voltage Rating: 500V AC(rms)/DC
Contact Resistance: 100 mΩ Max
Insulation Resistance: 1000 MΩ MIN
Withstanding Voltage: 500V AC r.m.s
Temperature Range—Operating: -40°C~+85°C
Mating Cycles: 3,000 Times

Material

Housing: High Temperature Plastic (UL 94V-0) Black
Contact Pin: Copper Alloy
Shell: Steel

Plating

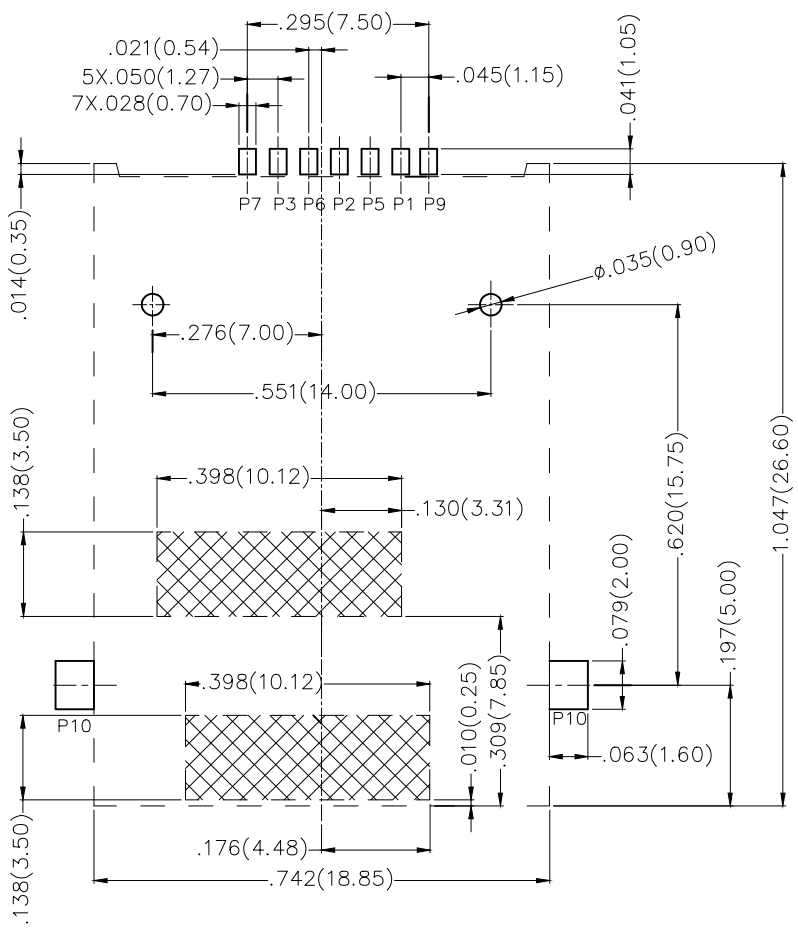
Contact: Gold in contact area, tin on tail.
Shell: Nickel plated, gold flash on solder area.



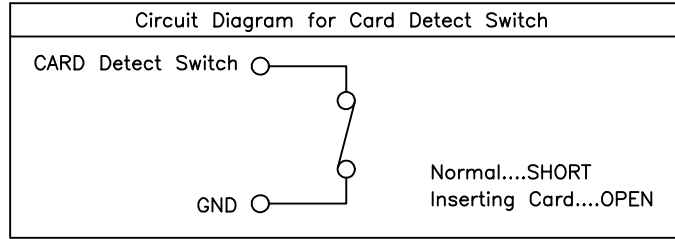
 THIRD ANGLE PROJECTION	GENERAL TOLERANCES (UNLESS SPECIFIED)		APPROVE BY	DATE	PART NO.	ITEM NO.	 Leader Of Industry	
	X.±.012(0.30)	X.±5'	FRANK	28/JUN/13	FCD517-7M	FCD517		
	DESIGN UNITS Inch (metric)	X.X±.010(0.25)	X.±2'	CHECKED BY	DATE	TITLE		REV 2 SHEET NO. 1/3
	SCALE	X.XX±.008(0.20)	.XX±1'	JACOB	28/JUN/13	SIM card connector(H:2mm)		
SIZE	X.XXX±.004(0.10)	.XXX±0.5'	DRAWN BY	DATE	THIS DRAWING CONTAINS INFORMATION THAT IS PROPRIETARY TO TXGA INDUSTRIAL ELECTRONICS(S.Z)CO.,LTD AND SHOULD NOT BE USED WITHOUT WRITTEN PERMISSION			
5:1	A4		CHERRY	28/JUN/13				

REV	LOCATIONS	DESCRIPTION	DATE	REVISER	APPD

A
B
C
D
E
F



Connector terminal NO.	Pin NO.
Pin 1	VCC:PWR signal and GND
Pin 2	RST:Reset signal
Pin 3	CLK:Clocking signal
Pin 4	Reserved
Pin 5	GND:PWR signal and GND
Pin 6	VPP:Porgramming Voltage
Pin 7	I/O:Serial date input/output
Pin 8	Reserved
Pin 9	CD:CARD Detect Switch
Pin 10	GND

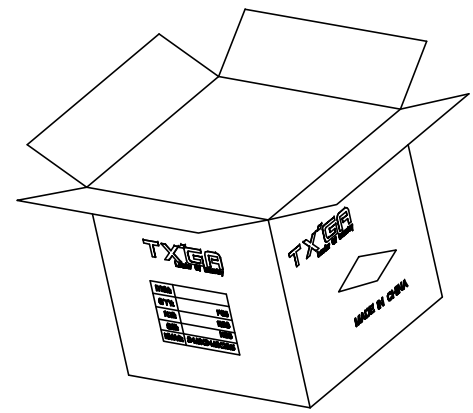
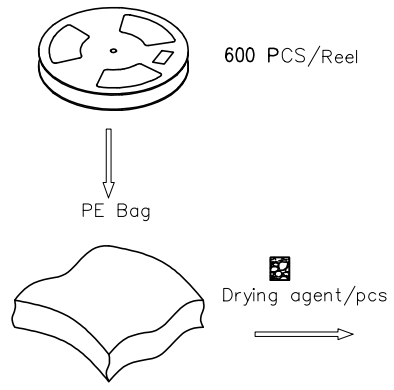
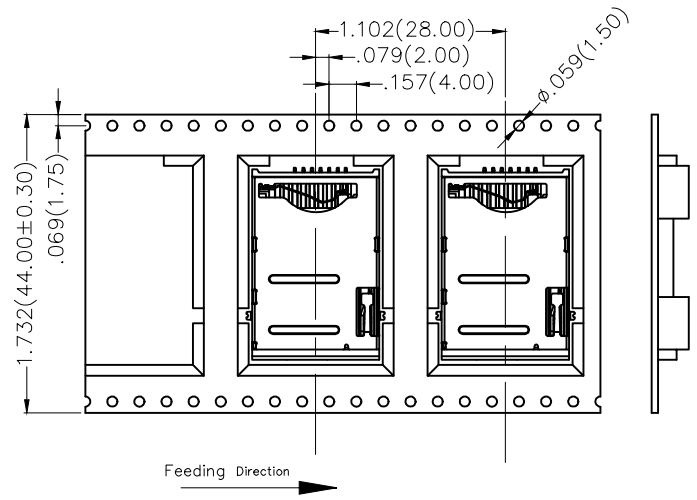
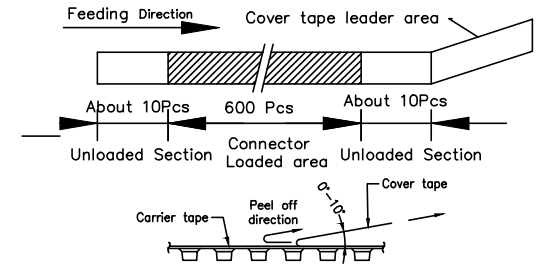
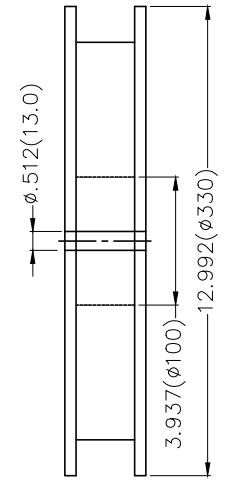
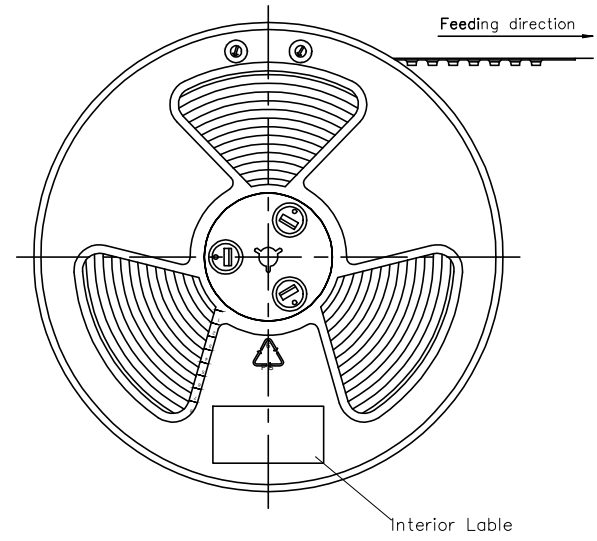


Recommended P.C.Board Layout

<p>THIRD ANGLE PROJECTION</p>	GENERAL TOLERANCES (UNLESS SPECIFIED)		APPROVE BY	DATE	PART NO.	ITEM NO.	<p>Leader Of Industry</p>	
	X.±.012(0.30)	X.'±5'	FRANK	28/JUN/13	FCD517-7M	FCD517		
	DESIGN UNITS Inch (metric)	X.X±.010(0.25)	.X'±2'	CHECKED BY	DATE	TITLE		REV 2 SHEET NO. 2/3
	SCALE 5:1	X.XX±.008(0.20)	.XX'±1'	JACOB	28/JUN/13	SIM card connector(H:2mm)		
SIZE A4	X.XXX±.004(0.10)	.XXX'±0.5'	DRAWN BY	DATE	THIS DRAWING CONTAINS INFORMATION THAT IS PROPRIETARY TO TXGA INDUSTRIAL ELECTRONICS(S.Z)CO.,LTD AND SHOULD NOT BE USED WITHOUT WRITTEN PERMISSION			
			CHERRY	28/JUN/13				

REV	LOCATIONS	DESCRIPTION	DATE	REVISER	APPD

- Note:**
- 10 sprocket hole cumulative tolerance $\pm 0.008(0.2)$
 - Carrier camber is within 1.0mm in 100mm
 - Material: White Conductive polystyrene Alloy 100% recyclable
 - All dimensions meet EIA-481-3 requirements
 - Component load per 13" reel: 600pcs



 THIRD ANGLE PROJECTION	GENERAL TOLERANCES (UNLESS SPECIFIED)		APPROVE BY	DATE	PART NO.	ITEM NO.	 Leader Of Industry	
	X.±.012(0.30)	X.'±5'	FRANK	28/JUN/13	FCD517-7M	FCD517		
	DESIGN UNITS Inch (metric)	X.X±.010(0.25)	.X'±2'	CHECKED BY	DATE	TITLE		REV 2 SHEET NO. 3/3
	SCALE	X.XX±.008(0.20)	.XX±1'	JACOB	28/JUN/13	SIM card connector(H:2mm)		
SIZE	X.XXX±.004(0.10)	.XXX±0.5'	DRAWN BY	DATE	THIS DRAWING CONTAINS INFORMATION THAT IS PROPRIETARY TO TXGA INDUSTRIAL ELECTRONICS(S.Z)CO.,LTD AND SHOULD NOT BE USED WITHOUT WRITTEN PERMISSION			
5:1	A4		CHERRY	28/JUN/13				