

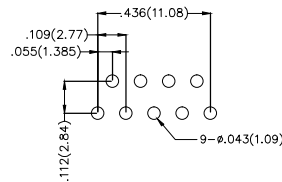
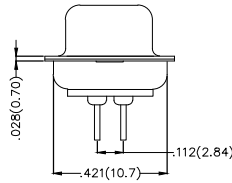
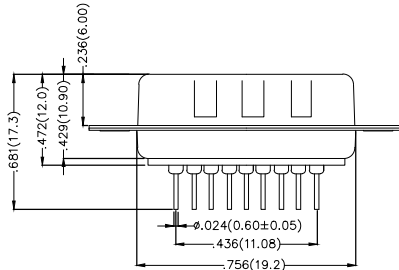
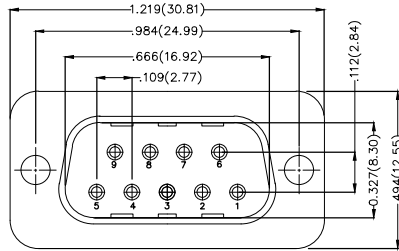
REV	LOCATIONS	DESCRIPTION	DATE	REVISER	APPD

**Electrical**

Current Rating: 3A AC(rms)/DC  
Voltage Rating: 250V AC(rms)/DC  
Contact Resistance: 25 mΩ Max  
Insulation Resistance: 1000 MΩ MIN  
Withstanding Voltage: 500V AC r.m.s  
Temperature Range—Operating: -55°C~+105°C

**Material and Plating**

Housing: PBT( UL 94V-0)  
Contact Pin: Phosphor Bronze/  
Selective gold in contact area, tin on tail  
Shell: SPCC/ Nickel plated



Recommended P.C.Board Layout

**Ordering Information**

FDB 09 03 — M0 D S X XX XX X A  
1 2 3 4 5 6 7 8 9 10 11

1	Category FDB-D-SUB Connectors	2	Circuits 09-9Circuits	3	Distinction No. 03	4	Type M0-Male	5	Assembly Layout D-DIP	6	Entry Angle S-180° Vertical
7	Plating 1-Gold plated 3-Selective gold in contact area, tin on tail	8	Thickness of Plating 00-Gold Flash 03-3μ" Custom plate available	9	Color-Resin K6-Black U1-Blue	10	Packaging L-Tube K-Tray	11	Distinction Type A-A Type		

 THIRD ANGLE PROJECTION	GENERAL TOLERANCES (UNLESS SPECIFIED)		APPROVE BY FRANK	DATE 28/JUN/13	PART NO. FDB0903-MODSXXXXXXA	ITEM NO. FDB0903	 Leader Of Industry	
	DESIGN UNITS Inch (metric)	X.X±.012(0.30) X.X±.008(0.20)	X'±5" X'±2"	CHECKED BY JACOB	DATE 28/JUN/13	TITLE D-SUB Connector 9 Circuits 180° Vertical Male		REV 0
SCALE 5:1	SIZE A4	X.XX±.006(0.15) X.XXX±.004(0.10)	.XX'±1" .XXX'±0.5'	DRAWN BY CHERRY	DATE 28/JUN/13	THIS DRAWING CONTAINS INFORMATION THAT IS PROPRIETARY TO TXGA INDUSTRIAL ELECTRONICS(S.Z)CO.,LTD AND SHOULD NOT BE USED WITHOUT WRITTEN PERMISSION		

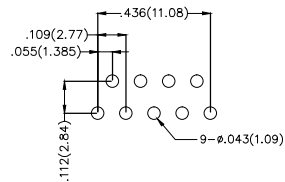
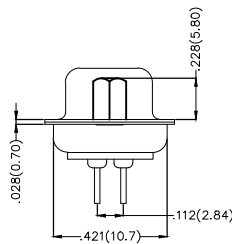
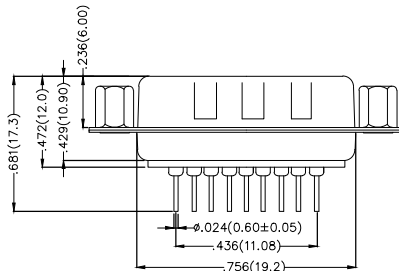
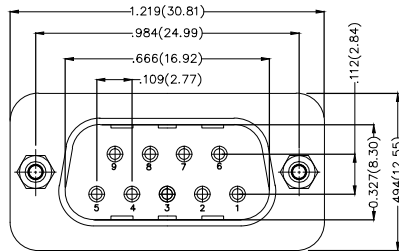
REV	LOCATIONS	DESCRIPTION	DATE	REVISER	APPD

**Electrical**

Current Rating: 3A AC(rms)/DC  
Voltage Rating: 250V AC(rms)/DC  
Contact Resistance: 25 mΩ Max  
Insulation Resistance: 1000 MΩ MIN  
Withstanding Voltage: 500V AC r.m.s  
Temperature Range—Operating: -55°C~+105°C

**Material and Plating**

Housing: PBT( UL 94V-0)  
Contact Pin: Phosphor Bronze/  
Selective gold in contact area, tin on tail  
Shell: SPCC/ Nickel plated  
Screw: Copper Alloy/ Nickel Plated



Recommended P.C.Board Layout

**Ordering Information**

FDB 09 03 — M0 D S X XX XX X B  
1 2 3 4 5 6 7 8 9 10 11

1	Category FDB-D-SUB Connectors	2	Circuits 09-9Circuits	3	Distinction No. 03	4	Type M0-Male	5	Assembly Layout D-DIP	6	Entry Angle S-180° Vertical
7	Plating 1-Gold plated 3-Selective gold in contact area, tin on tail	8	Thickness of Plating 00-Gold Flash 03-3μ" Custom plate available	9	Color-Resin K6-Black U1-Blue	10	Packaging L-Tube K-Tray	11	Distinction Type B-B Type		

 THIRD ANGLE PROJECTION	GENERAL TOLERANCES (UNLESS SPECIFIED)		APPROVE BY FRANK	DATE 28/JUN/13	PART NO. FDB0903-MODSXXXXXXB	ITEM NO. FDB0903	 Leader Of Industry
	DESIGN UNITS Inch (metric)	X.X±.012(0.30) X.±5'	CHECKED BY JACOB	DATE 28/JUN/13	TITLE D-SUB Connector 9 Circuits 180° Vertical Male		
SCALE 5:1	SIZE A4	X.XX±.006(0.15) .XX±1'	DRAWN BY CHERRY	DATE 28/JUN/13	THIS DRAWING CONTAINS INFORMATION THAT IS PROPRIETARY TO TXGA INDUSTRIAL ELECTRONICS(S.Z)CO.,LTD AND SHOULD NOT BE USED WITHOUT WRITTEN PERMISSION		

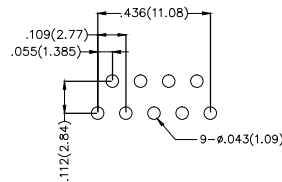
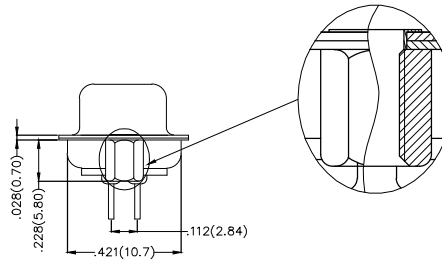
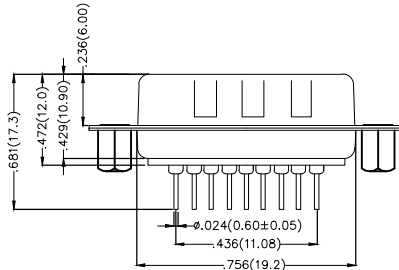
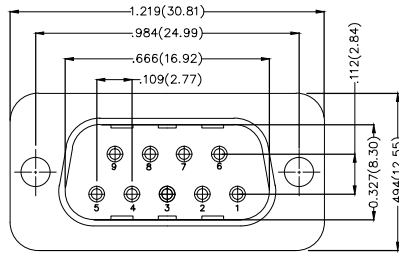
REV	LOCATIONS	DESCRIPTION	DATE	REVISER	APPD

**Electrical**

Current Rating: 3A AC(rms)/DC  
Voltage Rating: 250V AC(rms)/DC  
Contact Resistance: 25 mΩ Max  
Insulation Resistance: 1000 MΩ MIN  
Withstanding Voltage: 500V AC r.m.s  
Temperature Range—Operating: -55°C~+105°C

**Material and Plating**

Housing: PBT( UL 94V-0)  
Contact Pin: Phosphor Bronze/  
Selective gold in contact area, tin on tail  
Shell: SPCC/ Nickel plated  
Screw: Copper Alloy/ Nickel Plated



Recommended P.C.Board Layout

**Ordering Information**

FDB 09 03 — M0 D S X XX XX X E  
1 2 3 4 5 6 7 8 9 10 11

1	Category FDB-D-SUB Connectors	2	Circuits 09-9Circuits	3	Distinction No. 03	4	Type M0-Male	5	Assembly Layout D-DIP	6	Entry Angle S-180° Vertical
7	Plating 1-Gold plated 3-Selective gold in contact area, tin on tail	8	Thickness of Plating 00-Gold Flash 03-3μ" Custom plate available	9	Color-Resin K6-Black U1-Blue	10	Packaging L-Tube K-Tray	11	Distinction Type E-E Type		

 THIRD ANGLE PROJECTION	GENERAL TOLERANCES (UNLESS SPECIFIED)		APPROVE BY FRANK	DATE 28/JUN/13	PART NO. FDB0903-MODSXXXXXXE	ITEM NO. FDB0903	 Leader Of Industry	
	DESIGN UNITS Inch (metric)	X.X±.012(0.30) X.X±.008(0.20)	X.±5" .X±2"	CHECKED BY JACOB	DATE 28/JUN/13	TITLE D-SUB Connector 9 Circuits 180° Vertical Male		REV 0
SCALE 5:1	SIZE A4	X.XX±.006(0.15) X.XXX±.004(0.10)	.XX±1" .XXX±0.5'	DRAWN BY CHERRY	DATE 28/JUN/13	THIS DRAWING CONTAINS INFORMATION THAT IS PROPRIETARY TO TXGA INDUSTRIAL ELECTRONICS(S.Z)CO.,LTD AND SHOULD NOT BE USED WITHOUT WRITTEN PERMISSION		

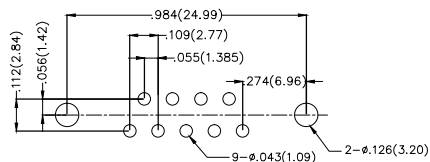
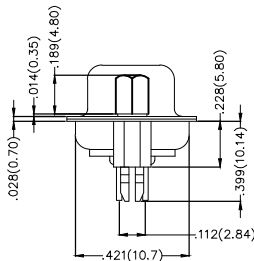
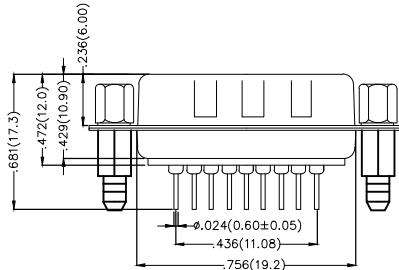
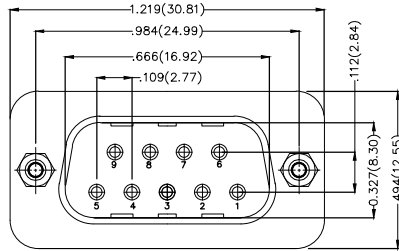
REV	LOCATIONS	DESCRIPTION	DATE	REVISER	APPD

**Electrical**

Current Rating: 3A AC(rms)/DC  
Voltage Rating: 250V AC(rms)/DC  
Contact Resistance: 25 mΩ Max  
Insulation Resistance: 1000 MΩ MIN  
Withstanding Voltage: 500V AC r.m.s  
Temperature Range—Operating: -55°C~+105°C

**Material and Plating**

Housing: PBT( UL 94V-0)  
Contact Pin: Phosphor Bronze/  
Selective gold in contact area, tin on tail  
Shell: SPCC/ Nickel plated  
Screw: Copper Alloy/ Nickel Plated  
Board Lock: Copper Alloy/ Tin Plated



Recommended P.C.Board Layout

**Ordering Information**

FDB 09 03 — M0 D S X XX XX X F  
1 2 3 4 5 6 7 8 9 10 11

1	Category FDB-D-SUB Connectors	2	Circuits 09-9Circuits	3	Distinction No. 03	4	Type M0-Male	5	Assembly Layout D-DIP	6	Entry Angle S-180° Vertical
7	Plating 1-Gold plated 3-Selective gold in contact area, tin on tail	8	Thickness of Plating 00-Gold Flash 03-3μ" Custom plate available	9	Color-Resin K6-Black U1-Blue	10	Packaging L-Tube K-Tray	11	Distinction Type F-F Type		

 THIRD ANGLE PROJECTION	GENERAL TOLERANCES (UNLESS SPECIFIED)		APPROVE BY FRANK	DATE 28/JUN/13	PART NO. FDB0903-MODSXXXXXXF	ITEM NO. FDB0903	 Leader Of Industry	
	DESIGN UNITS Inch (metric)	X.X±.012(0.30) X.X±.008(0.20)	X'±5" .X'±2"	CHECKED BY JACOB	DATE 28/JUN/13	TITLE D-SUB Connector 9 Circuits 180° Vertical Male		REV 0
SCALE 5:1	SIZE A4	X.XX±.006(0.15) X.XXX±.004(0.10)	.XX'±1" .XXX'±0.5'	DRAWN BY CHERRY	DATE 28/JUN/13	THIS DRAWING CONTAINS INFORMATION THAT IS PROPRIETARY TO TXGA INDUSTRIAL ELECTRONICS(S.Z)CO.,LTD AND SHOULD NOT BE USED WITHOUT WRITTEN PERMISSION		

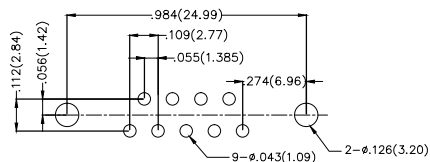
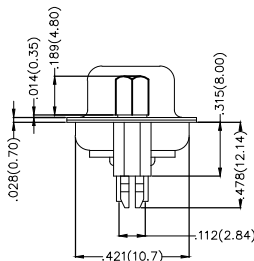
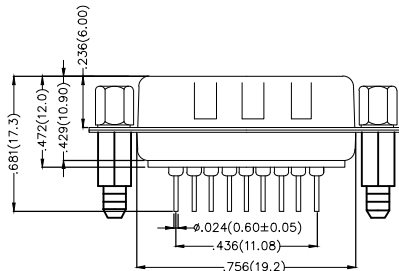
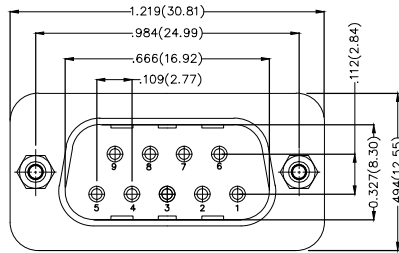
REV	LOCATIONS	DESCRIPTION	DATE	REVISER	APPD

**Electrical**

Current Rating: 3A AC(rms)/DC  
Voltage Rating: 250V AC(rms)/DC  
Contact Resistance: 25 mΩ Max  
Insulation Resistance: 1000 MΩ MIN  
Withstanding Voltage: 500V AC r.m.s  
Temperature Range—Operating: -55°C~+105°C

**Material and Plating**

Housing: PBT( UL 94V-0)  
Contact Pin: Phosphor Bronze/  
Selective gold in contact area, tin on tail  
Shell: SPCC/ Nickel plated  
Screw: Copper Alloy/ Nickel Plated  
Board Lock: Copper Alloy/ Tin Plated



Recommended P.C.Board Layout

**Ordering Information**

FDB 09 03 — M0 D S X XX XX X G  
1 2 3 4 5 6 7 8 9 10 11

1	Category FDB-D-SUB Connectors	2	Circuits 09-9Circuits	3	Distinction No. 03	4	Type M0-Male	5	Assembly Layout D-DIP	6	Entry Angle S-180° Vertical
7	Plating 1-Gold plated 3-Selective gold in contact area, tin on tail	8	Thickness of Plating 00-Gold Flash 03-3μ" Custom plate available	9	Color-Resin K6-Black U1-Blue	10	Packaging L-Tube K-Tray	11	Distinction Type G-G Type		

 THIRD ANGLE PROJECTION	GENERAL TOLERANCES (UNLESS SPECIFIED)		APPROVE BY FRANK	DATE 28/JUN/13	PART NO. FDB0903-MODSXXXXXXG	ITEM NO. FDB0903	 Leader Of Industry	
	DESIGN UNITS Inch (metric)	X.X±.012(0.30) X.X±.008(0.20)	X'±5" X'±2"	CHECKED BY JACOB	DATE 28/JUN/13	TITLE D-SUB Connector 9 Circuits 180° Vertical Male		REV 0
SCALE 5:1	SIZE A4	X.XX±.006(0.15) X.XXX±.004(0.10)	.XX'±1" .XXX'±0.5'	DRAWN BY CHERRY	DATE 28/JUN/13	THIS DRAWING CONTAINS INFORMATION THAT IS PROPRIETARY TO TXGA INDUSTRIAL ELECTRONICS(S.Z)CO.,LTD AND SHOULD NOT BE USED WITHOUT WRITTEN PERMISSION		

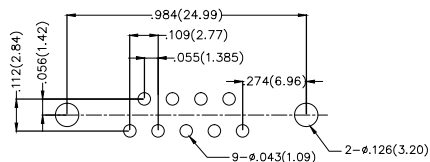
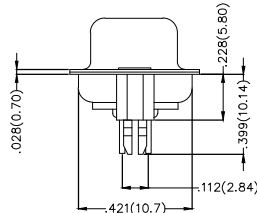
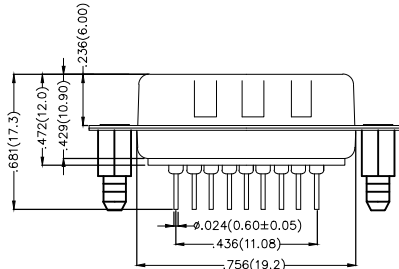
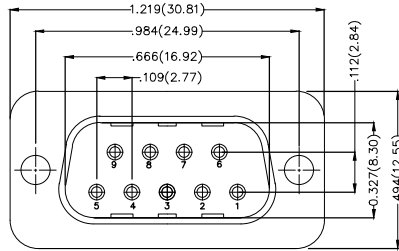
REV	LOCATIONS	DESCRIPTION	DATE	REVISER	APPD

**Electrical**

Current Rating: 3A AC(rms)/DC  
Voltage Rating: 250V AC(rms)/DC  
Contact Resistance: 25 mΩ Max  
Insulation Resistance: 1000 MΩ MIN  
Withstanding Voltage: 500V AC r.m.s  
Temperature Range—Operating: -55°C~+105°C

**Material and Plating**

Housing: PBT( UL 94V-0)  
Contact Pin: Phosphor Bronze/  
Selective gold in contact area, tin on tail  
Shell: SPCC/ Nickel plated  
Board Lock: Copper Alloy/ Tin Plated



Recommended P.C.Board Layout

**Ordering Information**

FDB 09 03 — M0 D S X XX XX X H  
1 2 3 4 5 6 7 8 9 10 11

1 Category FDB-D-SUB Connectors	2 Circuits 09-9Circuits	3 Distinction No. 03	4 Type M0-Male	5 Assembly Layout D-DIP	6 Entry Angle S-180° Vertical
7 Plating 1-Gold plated 3-Selective gold in contact area, tin on tail	8 Thickness of Plating 00-Gold Flash 03-3μ" Custom plate available	9 Color-Resin K6-Black U1-Blue	10 Packaging L-Tube K-Tray	11 Distinction Type H-H Type	

 THIRD ANGLE PROJECTION	GENERAL TOLERANCES (UNLESS SPECIFIED)		APPROVE BY FRANK	DATE 28/JUN/13	PART NO. FDB0903-MODSXXXXXXH	ITEM NO. FDB0903	 Leader Of Industry	
	DESIGN UNITS Inch (metric)	X.X±.012(0.30) X.X±.008(0.20)	X.±5° .X±2°	CHECKED BY JACOB	DATE 28/JUN/13	TITLE D-SUB Connector 9 Circuits 180° Vertical Male		REV 0
SCALE 5:1	SIZE A4	X.XX±.006(0.15) X.XXX±.004(0.10)	.XX±1° .XXX±0.5°	DRAWN BY CHERRY	DATE 28/JUN/13	THIS DRAWING CONTAINS INFORMATION THAT IS PROPRIETARY TO TXGA INDUSTRIAL ELECTRONICS(S.Z)CO.,LTD AND SHOULD NOT BE USED WITHOUT WRITTEN PERMISSION		

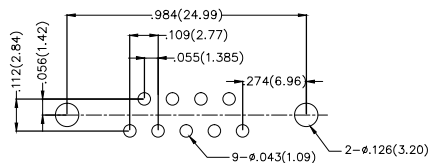
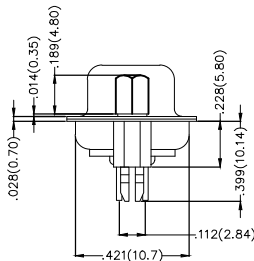
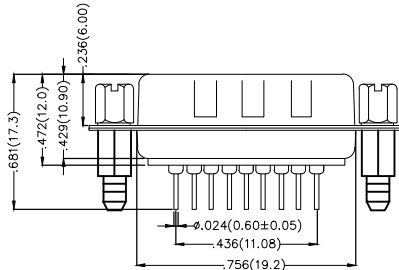
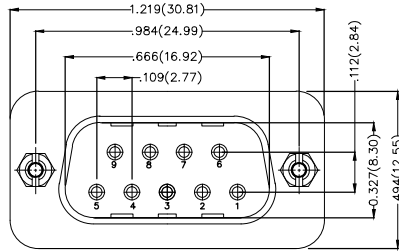
REV	LOCATIONS	DESCRIPTION	DATE	REVISER	APPD

**Electrical**

Current Rating: 3A AC(rms)/DC  
Voltage Rating: 250V AC(rms)/DC  
Contact Resistance: 25 mΩ Max  
Insulation Resistance: 1000 MΩ MIN  
Withstanding Voltage: 500V AC r.m.s  
Temperature Range—Operating: -55°C~+105°C

**Material and Plating**

Housing: PBT( UL 94V-0)  
Contact Pin: Phosphor Bronze/  
Selective gold in contact area, tin on tail  
Shell: SPCC/ Nickel plated  
Screw: Copper Alloy/ Nickel Plated  
Board Lock: Copper Alloy/ Tin Plated



Recommended P.C.Board Layout

**Ordering Information**

FDB 09 03 — M0 D S X XX XX X J  
1 2 3 4 5 6 7 8 9 10 11

1	Category FDB-D-SUB Connectors	2	Circuits 09-9Circuits	3	Distinction No. 03	4	Type M0-Male	5	Assembly Layout D-DIP	6	Entry Angle S-180° Vertical
7	Plating 1-Gold plated 3-Selective gold in contact area, tin on tail	8	Thickness of Plating 00-Gold Flash 03-3μ" Custom plate available	9	Color-Resin K6-Black U1-Blue	10	Packaging L-Tube K-Tray	11	Distinction Type J-J Type		

 THIRD ANGLE PROJECTION	GENERAL TOLERANCES (UNLESS SPECIFIED)		APPROVE BY FRANK	DATE 28/JUN/13	PART NO. FDB0903-MODSXXXXXXJ	ITEM NO. FDB0903	 Leader Of Industry	
	DESIGN UNITS Inch (metric)	X.X±.012(0.30) X.X±.008(0.20)	X'±5" .X'±2"	CHECKED BY JACOB	DATE 28/JUN/13	TITLE D-SUB Connector 9 Circuits 180° Vertical Male		REV 0
SCALE 5:1	SIZE A4	X.XX±.006(0.15) X.XXX±.004(0.10)	.XX'±1" .XXX'±0.5'	DRAWN BY CHERRY	DATE 28/JUN/13	THIS DRAWING CONTAINS INFORMATION THAT IS PROPRIETARY TO TXGA INDUSTRIAL ELECTRONICS(S.Z)CO.,LTD AND SHOULD NOT BE USED WITHOUT WRITTEN PERMISSION		