

REV	LOCATIONS	DESCRIPTION	DATE	REVISER	APPD
1		1. Add the "TXGA" logo 2. Part No.: Change FRJ45136 into FRJ45024	31/MAY/18	KATE	ERIC

**SPECIFICATIONS**

**Electrical**  
 Current Rating: 1.5A AC(rms)/DC  
 Voltage Rating: 500V AC(rms)/DC  
 Contact Resistance: 30 mΩ Max  
 Insulation Resistance: 1000 MΩ Min / DC 500V  
 Withstanding Voltage: 500V AC r.m.s  
 Operating Temperature: 0°C~+70°C

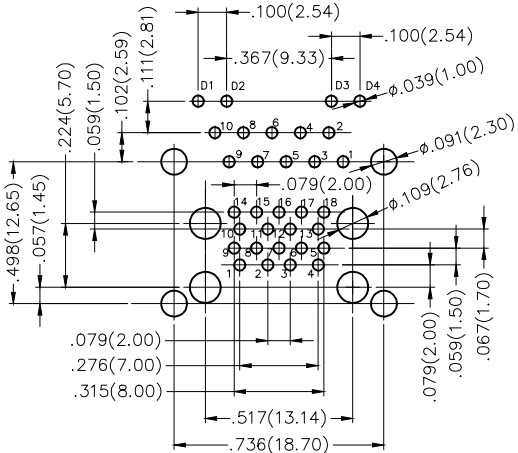
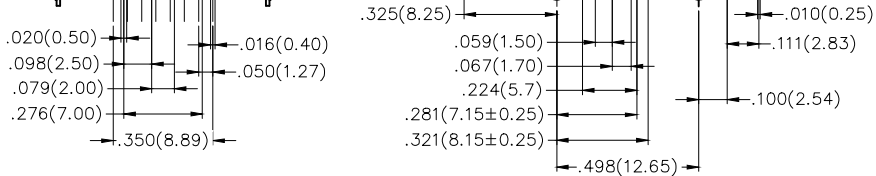
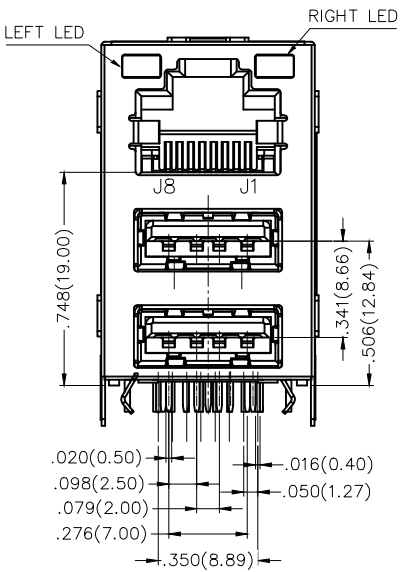
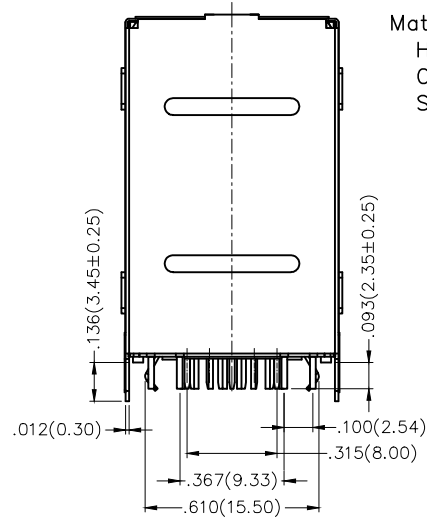
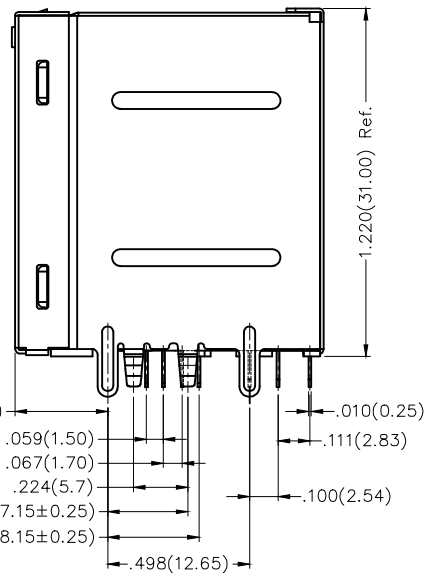
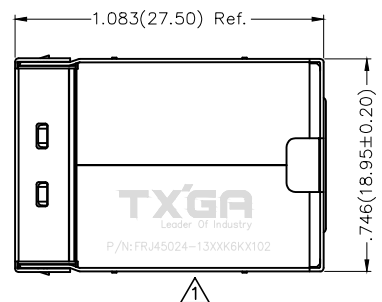
**Material and plating**  
 Housing: PBT (UL 94V-0), Black  
 Contact: Copper Alloy/ Gold in contact area, tin on tail  
 Shell: Copper alloy/ Nickel plated

**Ordering Information**

FRJ45 024 — 1 3 XX K6 K X 1 0 2  
 1 2 3 4 5 6 7 8 9 10

1 Category FRJ45-RJ45 Connector	2 Distinction No. 024	3 Ports options 1-1 Port	4 Plating 3-Selective gold in contact area, tin on tail	5 Thickness of plating 00-Gold flash 03-3μ" Custom plate available
6 Color-Resin K6-Black	7 Packaging K-Tray	8 LED style 5-L: Green+Orange R: Green 6-L: Yellow R: Orange+Green A-L: Yellow R: Green+Yellow	9 Contact type 1-Square pin	10 Pin circuits 2-1000Base-T

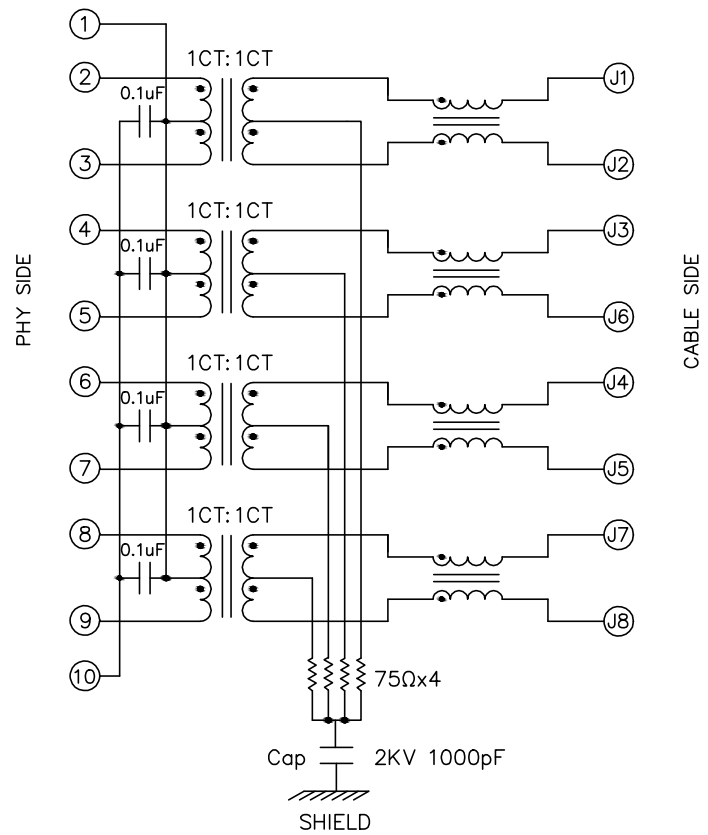
 <b>THIRD ANGLE PROJECTION</b>	GENERAL TOLERANCES (UNLESS SPECIFIED)		APPROVE BY FRANK	DATE 01/APR/17	PART NO. FRJ45024-13XXK6KX102	ITEM NO. FRJ45024	 <b>TXGA</b> Leader Of Industry		
	X.±.012(0.30)	X.±5'	CHECKED BY CHERRY	DATE 01/APR/17	TITLE RJ45+USB3.0 Connector 10P8C 90° Angle (1000Base-T)				
	DESIGN UNITS Inch (metric)	X.X±.008(0.20)	X.±2'	DRAWN BY KATE	DATE 01/APR/17	THIS DRAWING CONTAINS INFORMATION THAT IS PROPRIETARY TO TXGA INDUSTRIAL ELECTRONICS(S.Z)CO.,LTD AND SHOULD NOT BE USED WITHOUT WRITTEN PERMISSION		REV 1	SHEET NO. 1/2
	SCALE 5:1	SIZE A4	X.XX±.006(0.15)	X.X±1'	X.XXX±.004(0.10)	X.XX±0.5'			



Recommended P.C.Board Layout

REV	LOCATIONS	DESCRIPTION	DATE	REVISER	APPD

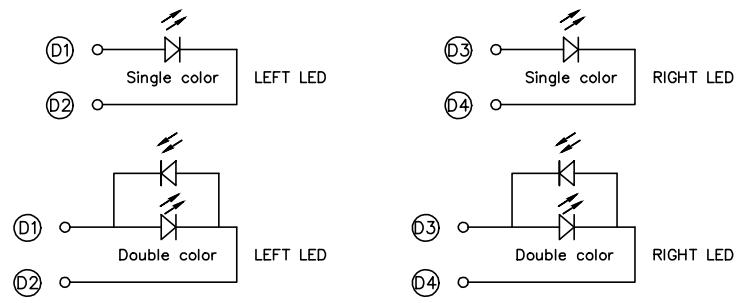
Schematic



Item	Specification	Test Condition
Application	10/100/1000 Base-T	
OCL	350uH Min	100KHz 0.1V 8mA DC Bias @ 0°C to 70°C
Leakage Inductance	0.5uH Max	100KHz 0.1V
DC Resistance	1.5Ω Max	
Turn Ratio	1CT:1CT	100KHz 0.1V
Insertion Loss	-1.1dB Min	0.5-100 MHz
	-16dB Max	0.5-30 MHz
	-16+20log(f/80)dB Max	30.1-60 MHz
Return Loss	-10dB Max	60.1-80 MHz
	-35dB Max	0.5-40 MHz
Cross Talk	-33+20log(f/50)dB Max	40.1-100 MHz
	-30dB Max	0.5-100 MHz
CMRR	-30dB Max	0.5-100 MHz
Hi-pot Test(Four pairs)	1mA Max	2250VDC
Operating Temperature	0°C to 70°C	

LED style

Part No.	Left	Right
5	D1+ D2- : Green D1- D2+ : Orange	D3+ D4- : Green
6	D1+ D2- : Yellow D1- D2+ : Green	D3+ D4- : Orange D3- D4+ : Green
A	D1+ D2- : Yellow D1- D2+ : Green	D3+ D4- : Green D3- D4+ : Yellow



<p>THIRD ANGLE PROJECTION</p>	GENERAL TOLERANCES (UNLESS SPECIFIED)		APPROVE BY FRANK	DATE 01/APR/17	PART NO. FRJ45024-13XXK6KX102	ITEM NO. FRJ45024	<p>Leader Of Industry</p>
	X.±.012(0.30)	X.±5'	CHECKED BY CHERRY	DATE 01/APR/17	TITLE RJ45+USB3.0 Connector 10P8C 90° Angle (1000Base-T)		
	X.X±.008(0.20)	.X'±2'	DRAWN BY KATE	DATE 01/APR/17	REV 1	SHEET NO. 2/2	
	X.XX±.006(0.15)	.XX'±1'		THIS DRAWING CONTAINS INFORMATION THAT IS PROPRIETARY TO TXGA INDUSTRIAL ELECTRONICS(S.Z)CO.,LTD AND SHOULD NOT BE USED WITHOUT WRITTEN PERMISSION			
SCALE 5:1	SIZE A4	X.XXX±.004(0.10)	.XXX'±0.5'				