

1 2 3 4 5 6 7 8

REV	LOCATIONS	DESCRIPTION	DATE	REVISER	APPD
1		Structure optimization	13/SEP/17	KATE	FRANK

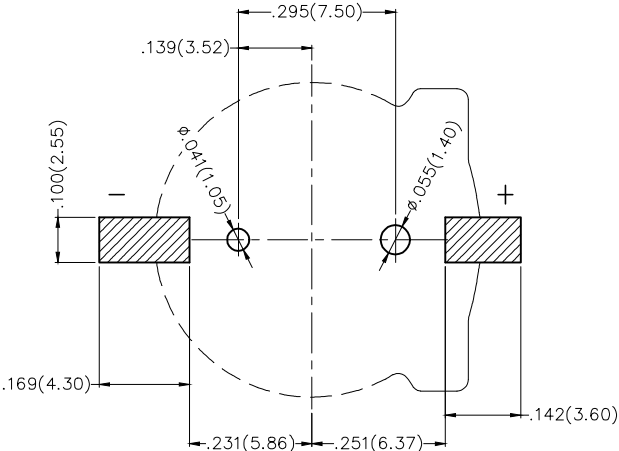
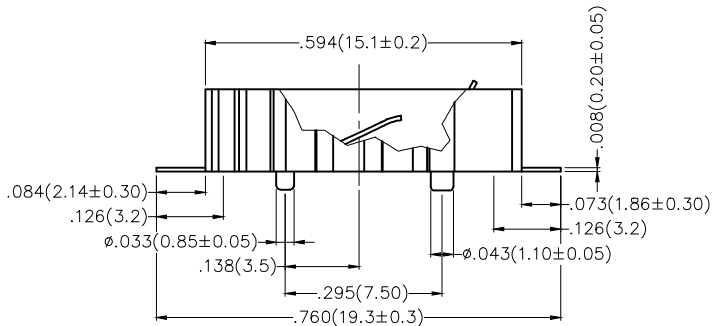
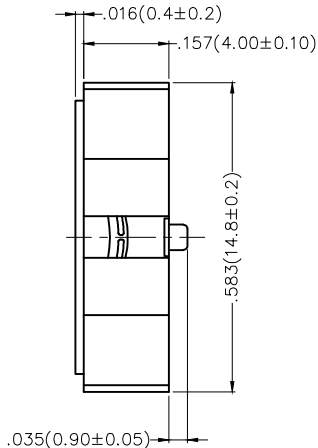
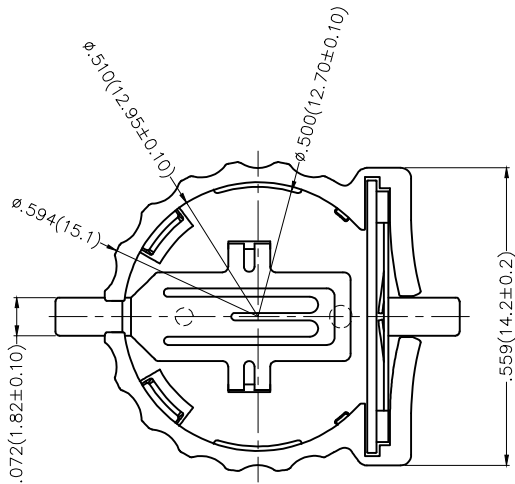
SPECIFICATIONS

Electrical

Voltage Rating: 3V AC(rms)/DC
 Contact Resistance: 30 mΩ Max
 Insulation Resistance: 1000 MΩ Min
 Withstanding Voltage: 500V AC r.m.s
 Temperature Range-Operating: -55°C~+105°C

Material And Plating

Housing: PPS (UL 94V-0) Color: Brown
 Terminal: Phosphor bronze/ Gold plated



Recommended P.C.Board Layout
 General Tolerances: ±0.05mm

A
B
C
D
E
F

A
B
C
D
E
F

<p>THIRD ANGLE PROJECTION</p>	GENERAL TOLERANCES (UNLESS SPECIFIED)		APPROVE BY VERNON	DATE 13/AUG/16	PART NO. FBA75002-S02B2101L	ITEM NO. FBA75002	<p>Leader Of Industry</p>
	DESIGN UNITS Inch (metric)	X.X±.012(0.30)	X'.±5'	CHECKED BY KATE	DATE 13/AUG/16	TITLE Battery Connector 180° Vertical(SMT)	
SCALE 5:1	SIZE A4	X.XX±.006(0.15)	.XX'±1'	DRAWN BY LXF	DATE 13/AUG/16	THIS DRAWING CONTAINS INFORMATION THAT IS PROPRIETARY TO TXGA INDUSTRIAL ELECTRONICS(S.Z)CO.,LTD AND SHOULD NOT BE USED WITHOUT WRITTEN PERMISSION	
		X.XXX±.004(0.10)	.XXX'±0.5'			REV 1	SHEET NO. 1/1

1 2 3 4 5 6 7 8