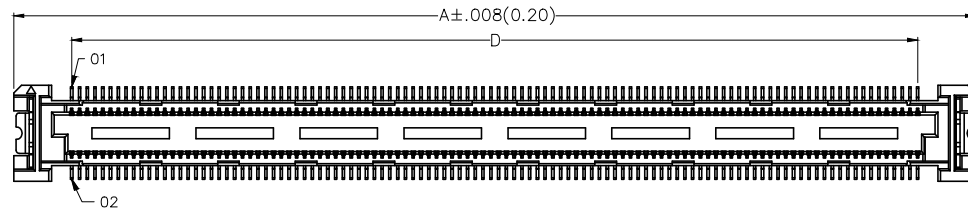


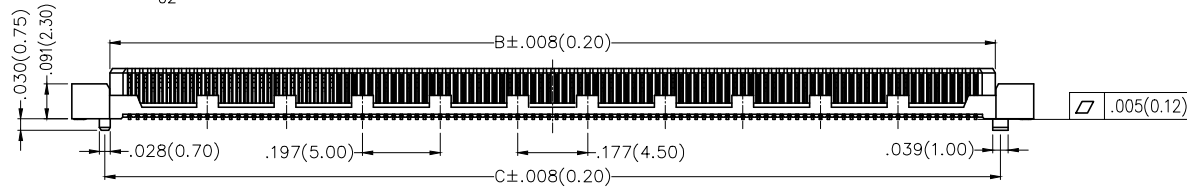
1 2 3 4 5 6 7 8

REV	LOCATIONS	DESCRIPTION	DATE	REVISER	APPD

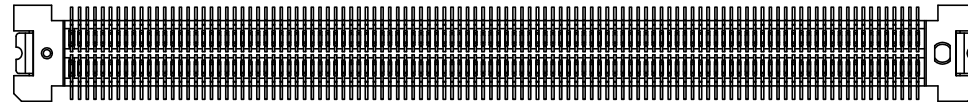
A



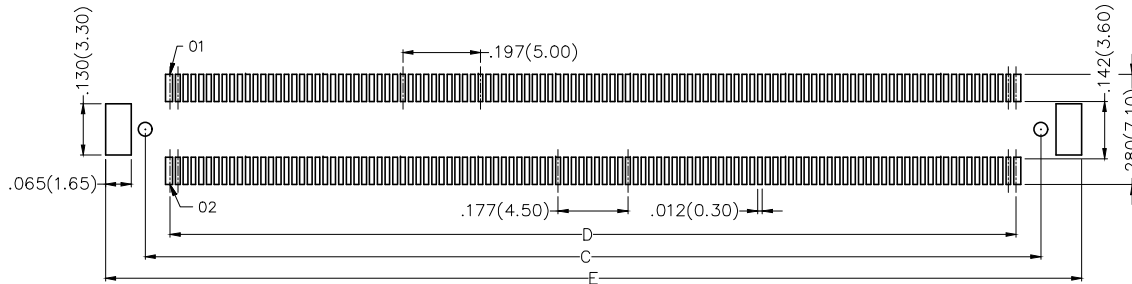
B



C



D



Recommended P.C.Board Layout
General Tolerances: ±.002(0.05)

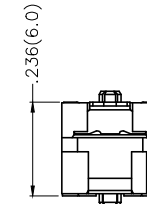
SPECIFICATIONS

Electrical

Current Rating: 0.5A AC(rms)/DC
Voltage Rating: 50V AC(rms)/DC
Contact Resistance: 55 mΩ Max.
Insulation Resistance: 100 MΩ Min.
Withstanding Voltage: 200V AC r.m.s
Temperature Range-Operating: -40°C~+85°C

Material and Plating

Housing: LCP (UL 94V-0) Black
Contacts: Phosphor Bronze/ Selective gold in contact area, tin on tail



ASSEMBLY

Ordering Information

FBB 050 09 — M XXX S 3 XX 3 K6 M
1 2 3 4 5 6 7 8 9 10 11

1 Category FBB-Board to Board	2 Series Number 050-Pitch0.50mm	3 Distinction No. 09	4 Type M-Male	5 Circuits XXX	6 Entry Angle S-180° Vertical
7 Plating 3-Selective gold in contact area, tin on tail	8 Thickness of Plating 01-1μ" 03-3μ" Custom plate available	9 Material-Resin 3-LCP	10 Color-Resin K6-Black	11 Packaging M-Reel	

E

F

<p>THIRD ANGLE PROJECTION</p>	GENERAL TOLERANCES (UNLESS SPECIFIED)		APPROVE BY FRANK	DATE 16/AUG/19	PART NO. FBB05009-MXXX3XX3K6M	ITEM NO. FBB05009	<p>Leader Of Industry</p>
	X.±.012(0.30)	X.±5'	CHECKED BY CHERRY	DATE 16/AUG/19	TITLE Board to Board Pitch 0.5mm 180° Vertical (SMT)		
DESIGN UNITS Inch (metric)	X.X±.008(0.20)	.X'±2'	DRAWN BY Aubrey	DATE 16/AUG/19	THIS DRAWING CONTAINS INFORMATION THAT IS PROPRIETARY TO TXGA INDUSTRIAL ELECTRONICS(S.Z)CO.,LTD AND SHOULD NOT BE USED WITHOUT WRITTEN PERMISSION		
SCALE 5:1	SIZE A4	X.XX±.006(0.15)					
		X.XXX±.004(0.10)					

1 2 3 4 5 6 7 8

1 2 3 4 5 6 7 8

REV	LOCATIONS	DESCRIPTION	DATE	REVISER	APPD

A

A

B

B

C

C

D

D



E

E

F

F

Circuits (n)	Part No.	Dimensions(in/mm)				
		A	B	C	D	E
120	FBB05009-M120S3XX3K6M	1.455(36.95)	1.262(32.05)	1.287(32.70)	1.161(29.50)	1.488(37.80)
220	FBB05009-M220S3XX3K6M	2.439(61.95)	2.246(57.05)	2.272(57.70)	2.146(54.50)	2.472(62.80)

 THIRD ANGLE PROJECTION	GENERAL TOLERANCES (UNLESS SPECIFIED)		APPROVE BY FRANK	DATE 16/AUG/19	PART NO. FBB05009-MXXXS3XX3K6M	ITEM NO. FBB05009	 Leader Of Industry
	DESIGN UNITS Inch (metric)	X.±.012(0.30) X.X±.008(0.20) X.XX±.006(0.15) X.XXX±.004(0.10)	X.±5° .X±2° .XX±1° .XXX±0.5°	CHECKED BY CHERRY	DATE 16/AUG/19	TITLE Board to Board Pitch 0.5mm 180° Vertical (SMT)	
SCALE 5:1	SIZE A4	DRAWN BY Aubrey		DATE 16/AUG/19	THIS DRAWING CONTAINS INFORMATION THAT IS PROPRIETARY TO TXGA INDUSTRIAL ELECTRONICS(S.Z)CO.,LTD AND SHOULD NOT BE USED WITHOUT WRITTEN PERMISSION		

1 2 3 4 5 6 7 8