

1 2 3 4 5 6 7 8

| REV | LOCATIONS | DESCRIPTION | DATE | REVISER | APPD |
|-----|-----------|-------------|------|---------|------|
|     |           |             |      |         |      |

A

B

C

D

E

F

A

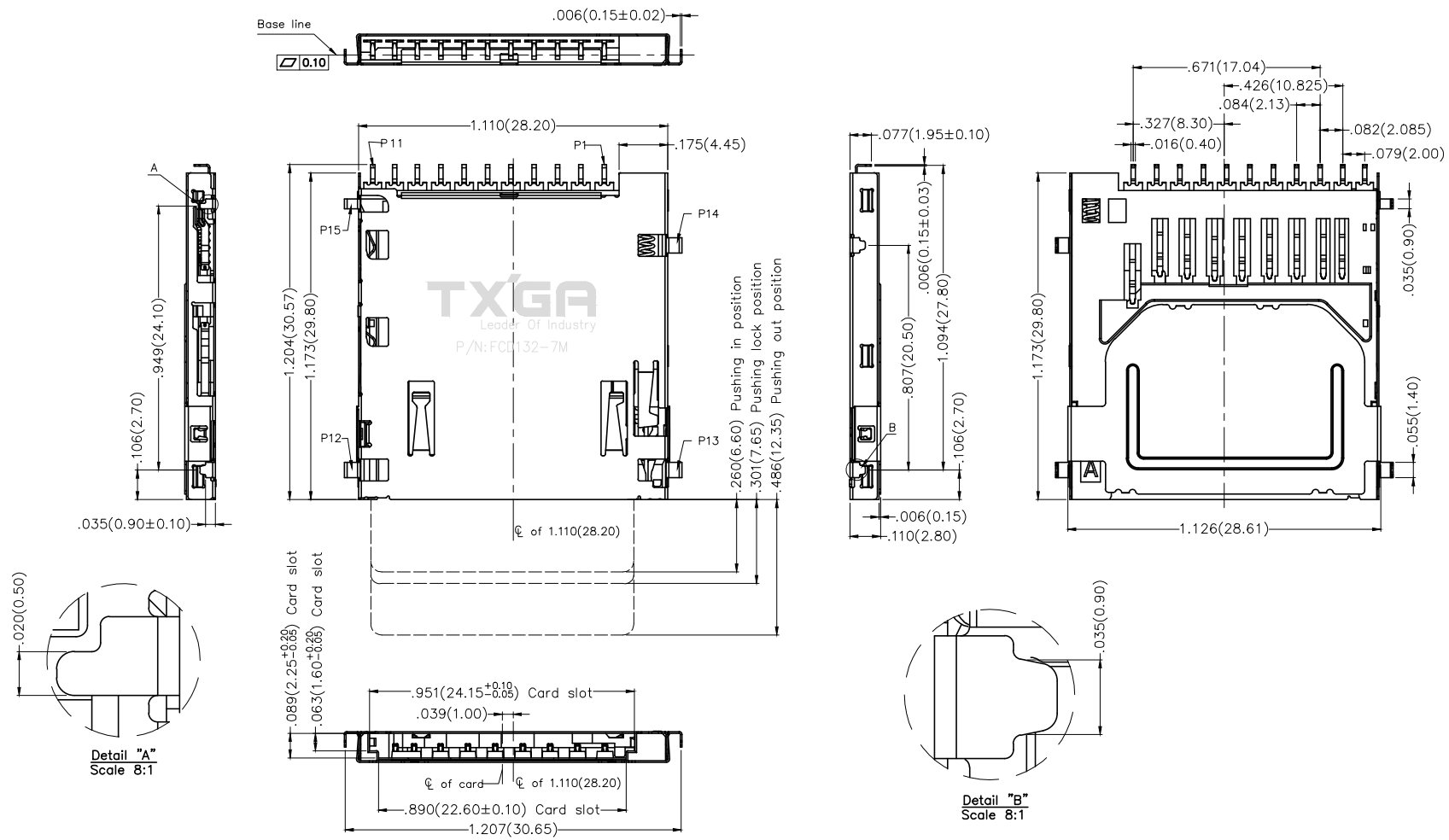
B

C

D

E

F



|                               |                                       |                  |                      |                   |  |                    |                           |       |
|-------------------------------|---------------------------------------|------------------|----------------------|-------------------|--|--------------------|---------------------------|-------|
| <p>THIRD ANGLE PROJECTION</p> | GENERAL TOLERANCES (UNLESS SPECIFIED) |                  | APPROVE BY<br>FRANK  | DATE<br>31/JUL/19 | PART NO.<br>FCD132-7M  | ITEM NO.<br>FCD132 | <p>Leader Of Industry</p> |       |
|                               | X.±.012(0.30)                         | X.±5'            | CHECKED BY<br>CHERRY | DATE<br>31/JUL/19 | TITLE<br>SD card connector (H=2.8mm)   |                    |                           | REV 0 |
|                               | X.X±.008(0.20)                        | X.±2'            | DRAWN BY<br>KATE     | DATE<br>31/JUL/19 | THIS DRAWING CONTAINS INFORMATION THAT IS PROPRIETARY TO TXGA INDUSTRIAL ELECTRONICS(S.Z)CO.,LTD AND SHOULD NOT BE USED WITHOUT WRITTEN PERMISSION |                    |                           |       |
|                               | X.XX±.006(0.15)                       | .XX'±1'          |                      |                   |  |                    |                           |       |
| SCALE<br>5:1                  | SIZE<br>A4                            | X.XXX±.004(0.10) | .XXX'±0.5'           |                   |  |                    |                           |       |

1 2 3 4 5 6 7 8

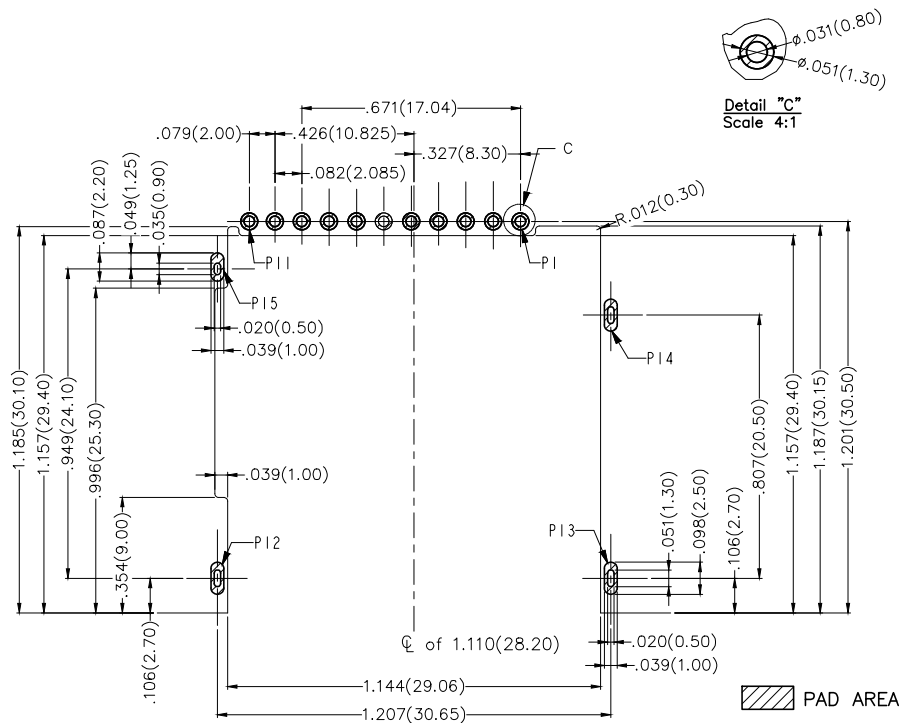
| REV | LOCATIONS | DESCRIPTION | DATE | REVISER | APPD |
|-----|-----------|-------------|------|---------|------|
|     |           |             |      |         |      |

**LOCATIONS SPECIFICATIONS**

**Electrical**  
 Current Rating: 0.5A AC(rms)/DC  
 Voltage Rating: 100V AC(rms)/DC  
 Contact Resistance: 100 mΩ Max  
 Insulation Resistance: 1000 MΩ Min/DC 250V  
 Withstanding Voltage: 500V AC r.m.s  
 Temperature Range-Operating: -25°C~+85°C

**Material**  
 Housing: LCP (UL 94V-0) Black  
 Contact: Copper alloy  
 Shell: Stainless steel

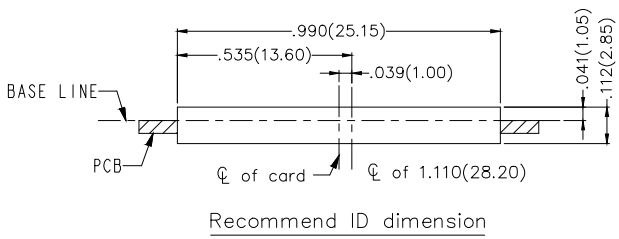
**Plating**  
 Contact: 1μ" gold in contact area, Matte tin on solder area,  
 Nickel plated overall  
 Shell: Nickel plated overall



Recommended P.C.Board Layout  
 General tolerances: ±.002(0.05)

| PIN NO. | PIN DEFINE | PIN NO. | PIN DEFINE |
|---------|------------|---------|------------|
| P1      | DAT2       | P7      | VSS        |
| P2      | CD/DAT3    | P8      | DAT0       |
| P3      | CMD        | P9      | DAT1       |
| P4      | VSS        | P10     | WP SW      |
| P5      | VDD        | P11     | CD SW      |
| P6      | CLK        | P12     | GND SW     |

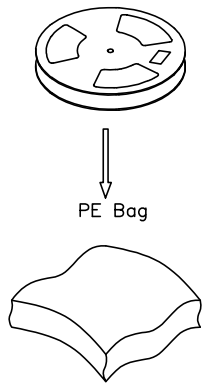
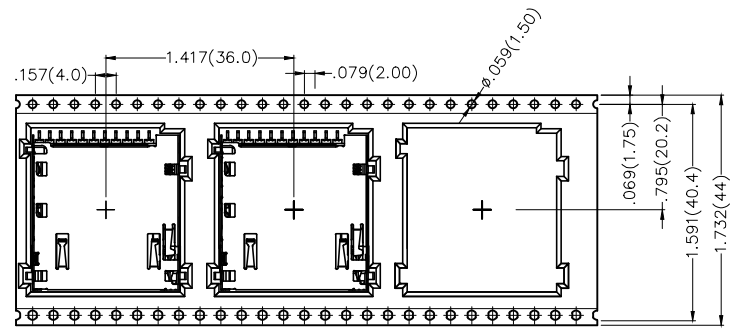
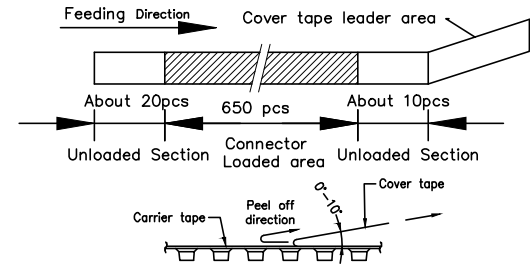
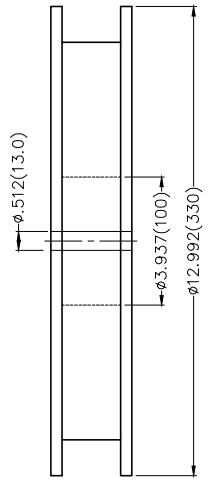
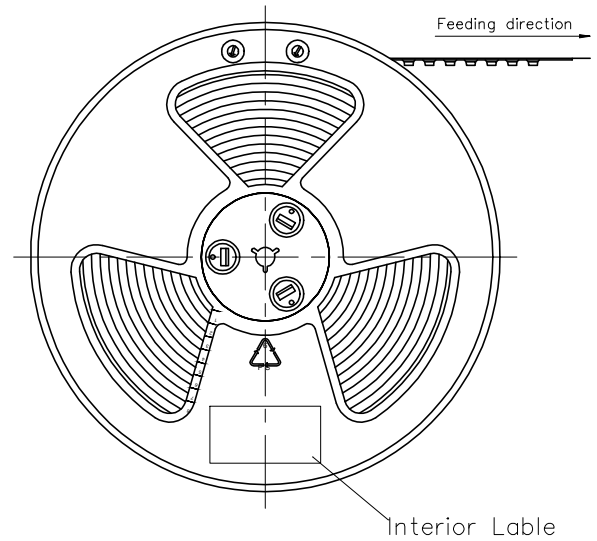
|                     | PROTECT WRITE PROTECT POSITION | CONTACT WRITE ENABLE POSITION | DETECT CONTACT |
|---------------------|--------------------------------|-------------------------------|----------------|
| CARD UNINSERTION    | CLOSE                          | CLOSE                         | CLOSE          |
| CARD HALF INSERTION | OPEN                           | OPEN                          | CLOSE          |
| CARD INSERTION      | CLOSE                          | OPEN                          | OPEN           |



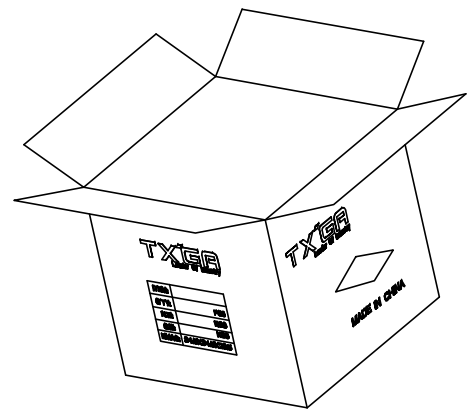
|                                   |   |                     |  |  |   |  |                                       |  |
|-----------------------------------|---|---------------------|--|--|---|--|---------------------------------------|--|
| <br><b>THIRD ANGLE PROJECTION</b> | <b>GENERAL TOLERANCES (UNLESS SPECIFIED)</b><br>X.±.012(0.30) X.±5'<br>X.X±.008(0.20) X.±2'<br>X.XX±.006(0.15) .XX±1'<br>X.XXX±.004(0.10) .XXX±0.5' |                     | <b>APPROVE BY</b><br>FRANK<br><b>CHECKED BY</b><br>CHERRY<br><b>DRAWN BY</b><br>KATE | <b>DATE</b><br>31/JUL/19<br><b>DATE</b><br>31/JUL/19<br><b>DATE</b><br>31/JUL/19 | <b>PART NO.</b><br>FCD132-7M<br><b>TITLE</b><br>SD card connector (H=2.8mm) | <b>ITEM NO.</b><br>FCD132  | <br><b>TXGA</b><br>Leader Of Industry |  |
|                                   | <b>DESIGN UNITS</b><br>Inch (metric)  | <b>SCALE</b><br>5:1 | <b>SIZE</b><br>A4  | <b>REV</b><br>0  | <b>SHEET NO.</b><br>2/3   | THIS DRAWING CONTAINS INFORMATION THAT IS PROPRIETARY TO TXGA INDUSTRIAL ELECTRONICS(S.Z)CO.,LTD AND SHOULD NOT BE USED WITHOUT WRITTEN PERMISSION |                                       |  |

| REV | LOCATIONS | DESCRIPTION | DATE | REVISER | APPD |
|-----|-----------|-------------|------|---------|------|
|     |           |             |      |         |      |

- Note:
- 10 sprocket hole cumulative tolerance  $\pm 0.2$
  - Carrier camber is within 1.0mm in 100mm
  - Material: White Conductive polystyrene Alloy 100% recyclable
  - All dimensions meet EIA-481-3 requirements
  - Component load per 13" reel: 650 pcs



650 pcs/Reel



Feeding Direction

|                               |                                       |                 |            |           |                             |          |                        |
|-------------------------------|---------------------------------------|-----------------|------------|-----------|-----------------------------|----------|------------------------|
| <br>THIRD ANGLE PROJECTION    | GENERAL TOLERANCES (UNLESS SPECIFIED) |                 | APPROVE BY | DATE      | PART NO.                    | ITEM NO. | <br>Leader Of Industry |
|                               | X. $\pm$ .012(0.30)                   | X. $\pm$ 5'     | FRANK      | 12/JUL/19 | FCD132-7M                   | FCD132   |                        |
| DESIGN UNITS<br>Inch (metric) | X.X $\pm$ .008(0.20)                  | X. $\pm$ 2'     | CHECKED BY | DATE      | TITLE                       |          | REV 0                  |
| SCALE<br>5:1                  | X.XX $\pm$ .006(0.15)                 | X.X $\pm$ 1'    | CHERRY     | 12/JUL/19 | SD card connector (H=2.8mm) |          | SHEET NO. 3/3          |
|                               | X.XXX $\pm$ .004(0.10)                | .XXX $\pm$ 0.5' |            |           | DRAWN BY                    | DATE     |                        |
| SIZE<br>A4                    |                                       |                 | KATE       | 12/JUL/19 |                             |          |                        |