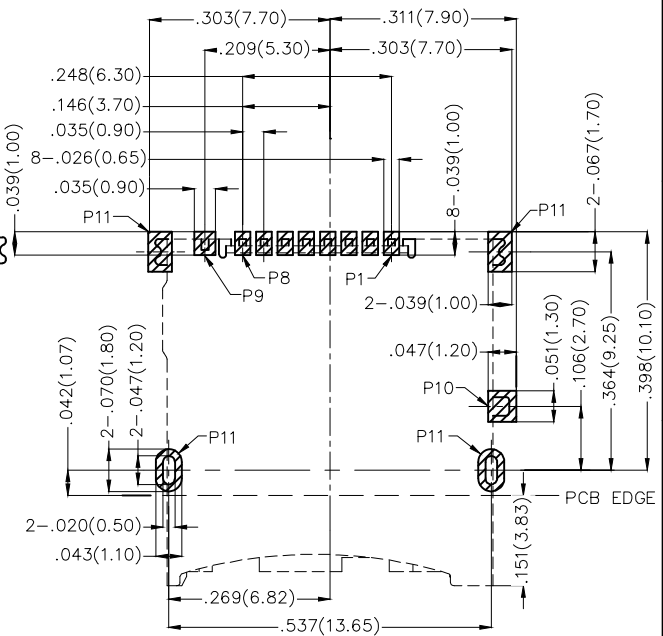
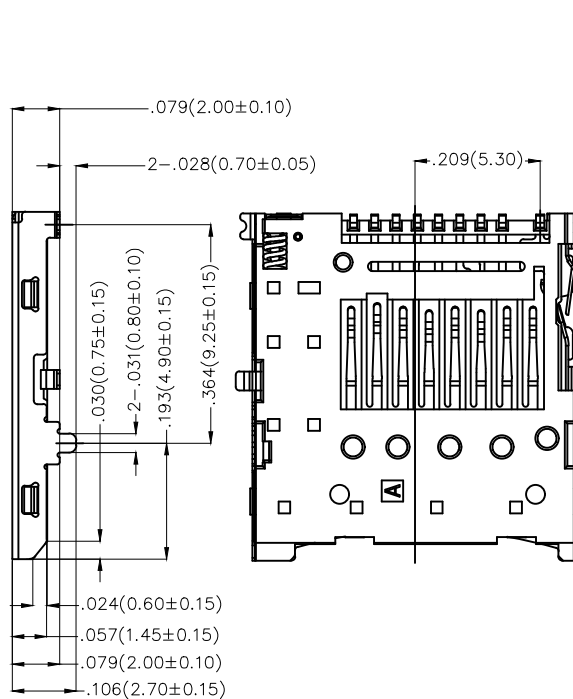
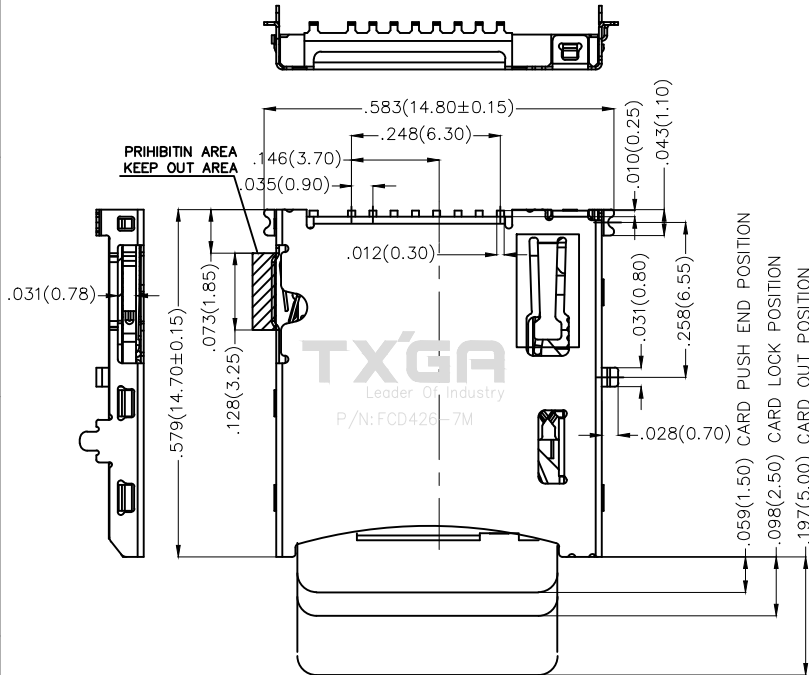


REV	LOCATIONS	DESCRIPTION	DATE	REVISER	APPD
-----	-----------	-------------	------	---------	------

A
B
C
D
E
F

A
B
C
D
E
F



Recommended P.C.Board Layout
General tolerances: ±.002(0.05)

▨ PAD AREA
[] KEEP OUT AREA

Electrical

Current Rating: 0.5A AC(rms)/DC
Voltage Rating: 100V AC(rms)/DC
Contact Resistance: 100 m Ω Max
Insulation Resistance: 1000 M Ω MIN
Withstanding Voltage: 500V AC r.m.s
Temperature Range-Operating: -25°C~+85°C

Material and Plating

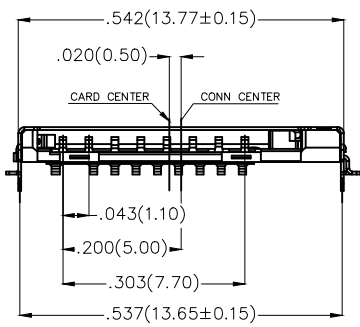
Housing: LCP UL94V-0 Color: Black
Shell: SUS304 , Gold in solder area, Nickel plating overall
Contact Pin: Copper alloy , 1μ" gold in contact area, gold flash in solder area, Nickel plated overall

PIN ASSIGNMENT

Pin No.	PIN ASSIGNMENT
P1	MICRO SD_DAT2
P2	MICROSD SD_CD/DAT3
P3	MICRO SD_CMD
P4	MICRO SD_VDD
P5	MICRO SD_CLK
P6	MICRO SD_VSS
P7	MICRO SD_DAT0
P8	MICRO SD_DAT1
P9	MICRO SD_CD
P10	MICRO SD_GND

Opening/Close of Switch

	Card Detect Switch
CARD UNINSERTION	OPEN
CARD HALF INSERTION	OPEN
CARD INSERTION	CLOSE
N/O	



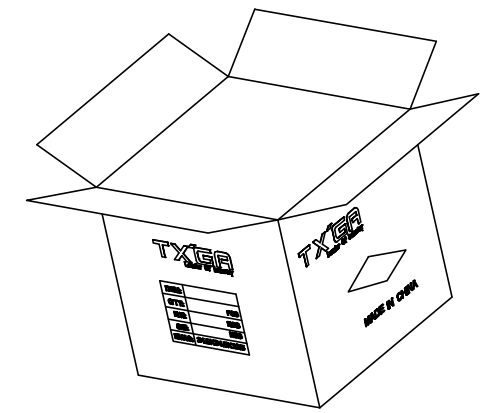
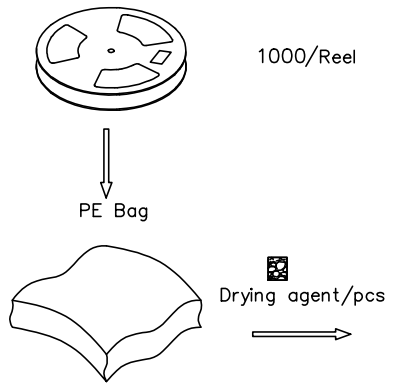
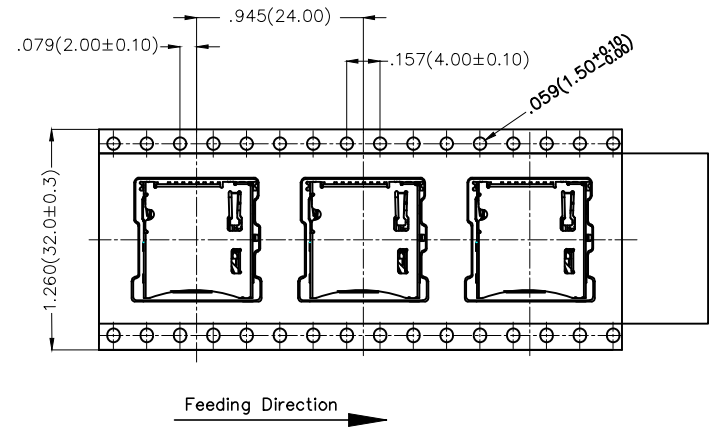
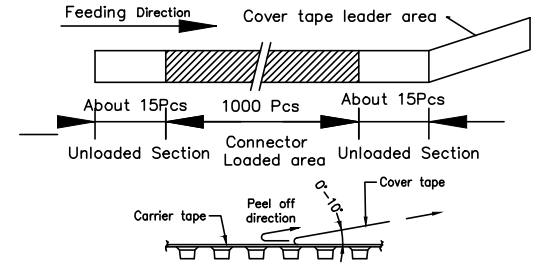
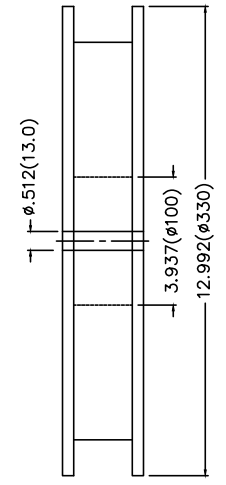
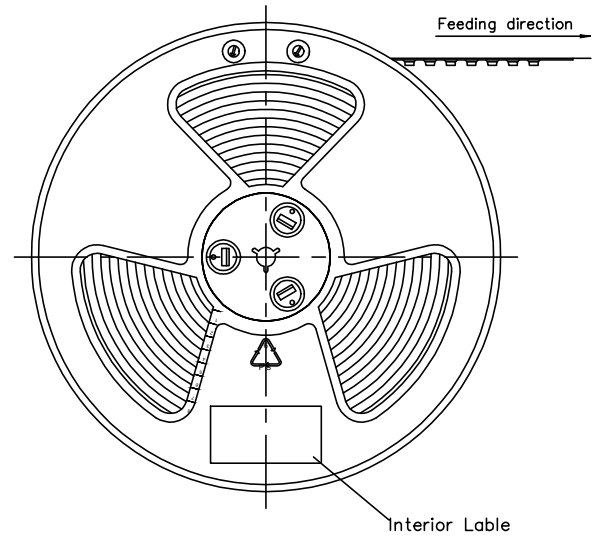
<p>THIRD ANGLE PROJECTION</p>	GENERAL TOLERANCES (UNLESS SPECIFIED)		APPROVE BY	DATE	PART NO.	ITEM NO.	<p>Leader Of Industry</p>
	X.±.012(0.30)	X.±5'	FRANK	13/JUL/19	FCD426-7M	FCD426	
	X.X±.008(0.20)	X.±2'	CHECKED BY	DATE	TITLE		
	X.XX±.006(0.15)	.XX±1'	CHERRY	13/JUL/19	MICRO SD PUSH (2.0)		
SCALE	SIZE	X.XXX±.004(0.10)	.XXX±0.5'	DRAWN BY	DATE	THIS DRAWING CONTAINS INFORMATION THAT IS PROPRIETARY TO TXGA INDUSTRIAL ELECTRONICS(S.Z)CO.,LTD AND SHOULD NOT BE USED WITHOUT WRITTEN PERMISSION	
5:1	A4			ZOEY	13/JUL/19	REV 0	SHEET NO. 1/2

1 2 3 4 5 6 7 8

1 2 3 4 5 6 7 8

REV	LOCATIONS	DESCRIPTION	DATE	REVISED	APPD

- Note:
- 10 sprocket hole cumulative tolerance ± 0.2
 - Carrier camber is within 1.0mm in 100mm
 - Material: White Conductive polystyrene Alloy 100% recyclable
 - All dimensions meet EIA-481-3 requirements
 - Component load per 13" reel: 1000pcs



<p>THIRD ANGLE PROJECTION</p>	GENERAL TOLERANCES (UNLESS SPECIFIED)		APPROVE BY	DATE	PART NO.	ITEM NO.	<p>Leader Of Industry</p>	
	X. \pm .012(0.30)	X. \pm 5'	FRANK	13/JUL/19	FCD426-7M	FCD426		
	DESIGN UNITS Inch (metric)	X.X \pm .008(0.20)	.X \pm 2'	CHECKED BY	DATE	TITLE		REV 0
	SCALE	SIZE	X.XX \pm .006(0.15)	.XX \pm 1'	CHERRY	13/JUL/19	MICRO SD PUSH (2.0)	SHEET NO. 2/2
5:1	A4	X.XXX \pm .004(0.10)	.XXX \pm 0.5'	DRAWN BY	DATE	THIS DRAWING CONTAINS INFORMATION THAT IS PROPRIETARY TO TXGA INDUSTRIAL ELECTRONICS(S.Z)CO.,LTD AND SHOULD NOT BE USED WITHOUT WRITTEN PERMISSION		
			ZOEY	13/JUL/19				