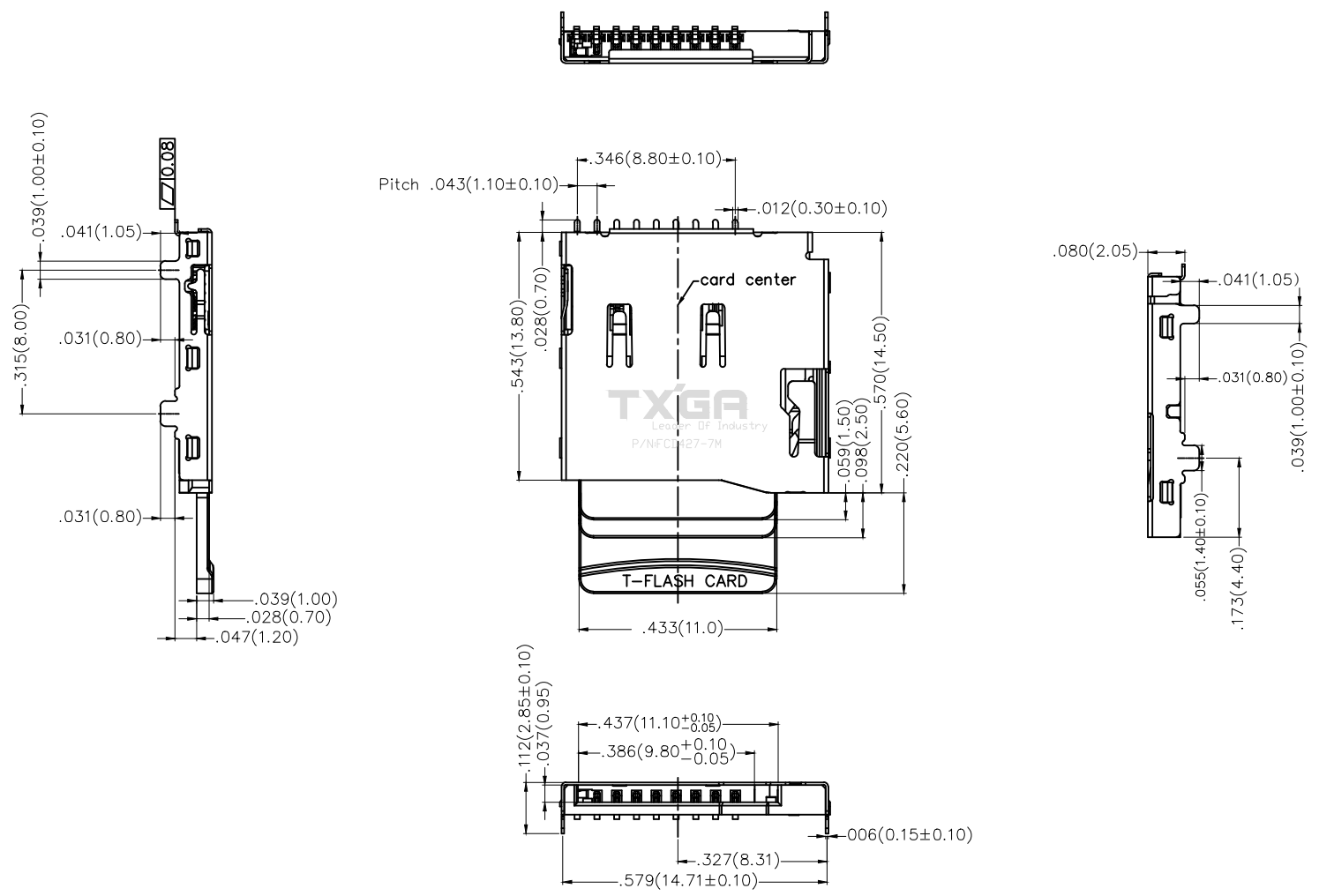


1 2 3 4 5 6 7 8

REV	LOCATIONS	DESCRIPTION	DATE	REVISER	APPD

A
B
C
D
E
F

A
B
C
D
E
F



<p>THIRD ANGLE PROJECTION</p>	GENERAL TOLERANCES (UNLESS SPECIFIED)		APPROVE BY	DATE	PART NO.	ITEM NO.	<p>Leader Of Industry</p>	
	X,±.012(0.30)	X,*±5*	FRANK	13/JUL/19	FCD427-7M	FCD427		
	DESIGN UNITS	X,XX±.008(0.20)	X,*±2*	CHECKED BY	DATE	TITLE		<p>Leader Of Industry</p>
	Inch (metric)	X,XX±.006(0.15)	XX*±1*	CHERRY	13/JUL/19	Mirco SD card connector(H=2.05mm)		
SCALE	SIZE	X,XXX±.004(0.10)	XXX*±0.5*	DRAWN BY	DATE	THIS DRAWING CONTAINS INFORMATION THAT IS PROPRIETARY TO TXGA INDUSTRIAL ELECTRONICS(S.Z)CO.,LTD AND SHOULD NOT BE USED WITHOUT WRITTEN PERMISSION		
5:1	A4			Aubrey	13/JUL/19	REV 0	SHEET NO. 1/3	

1 2 3 4 5 6 7 8

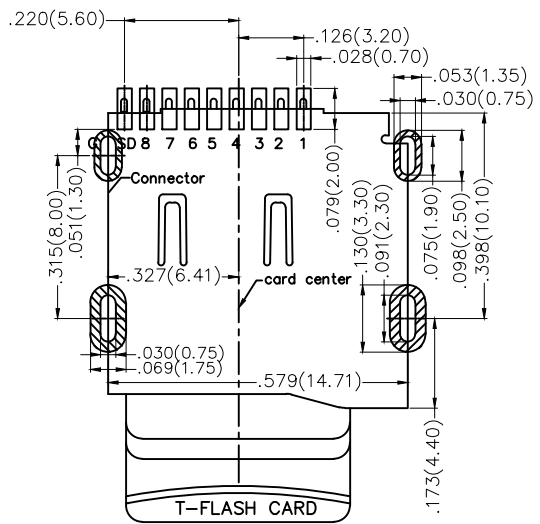
REV	LOCATIONS	DESCRIPTION	DATE	REVISER	APPD

Electrical

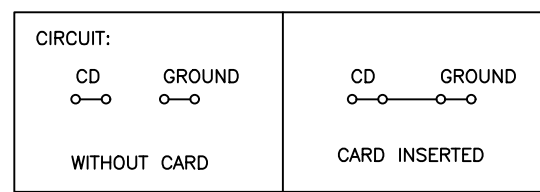
Current Rating: 0.5A AC(rms)/DC
Voltage Rating: 100V AC(rms)/DC
Contact Resistance: 30 mΩ Max
Insulation Resistance: 1000 MΩ MIN
Withstanding Voltage: 500V AC r.m.s
Temperature Range-Operating: -25°C~+80°C

Material and Plating

Housing: High Temperature Plastic(UL 94V-0)
Contact Pin: Phosphor Bronze
Plating: 1μ" gold in contact area, tin on tail
Durability: 10,000 Times



Recommended P.C.Board Layout
General tolerances: ±.002(0.05)

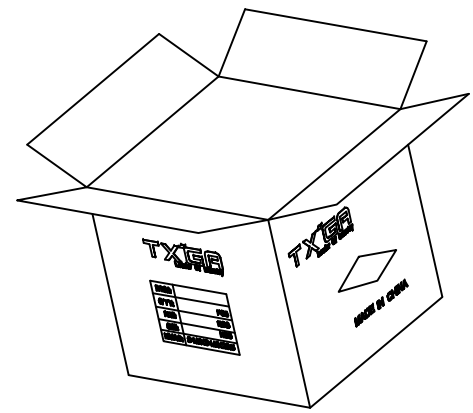
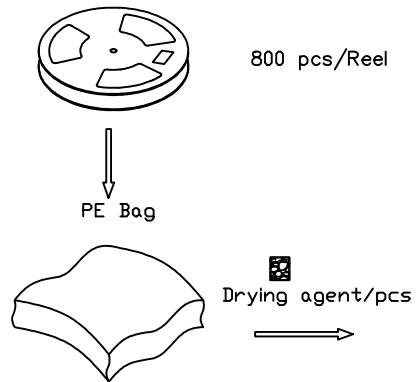
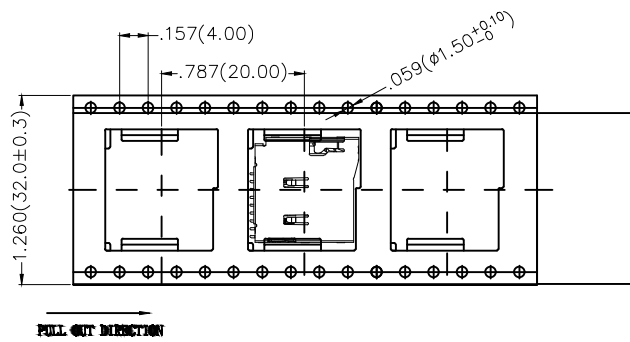
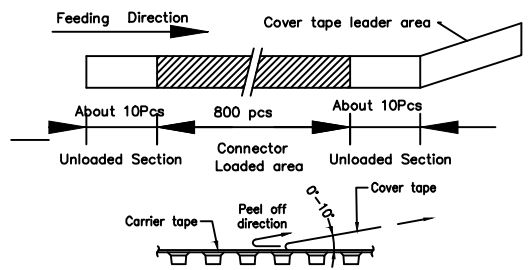
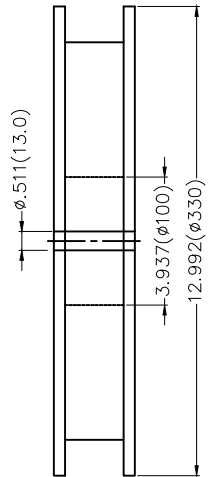
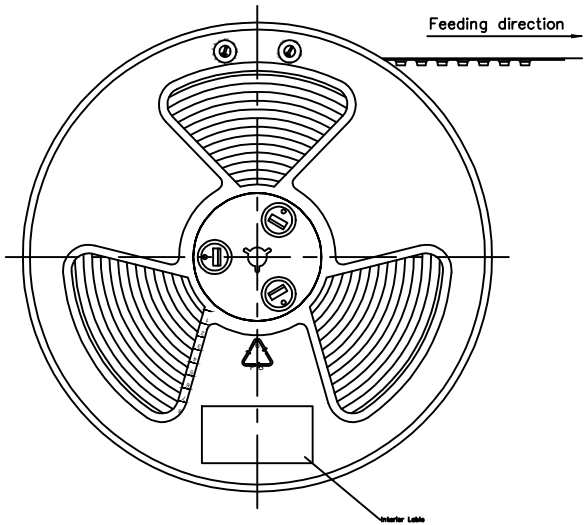


Pin No.	MICRO SD
PIN1	DAT2 1P
PIN2	CD/DAT3 2P
PIN3	CMD 3P
PIN4	VDD 4P
PIN5	CLK 5P
PIN6	VSS 6P
PIN7	DAT0 7P
PIN8	DAT1 8P
PIN9	CARD DETECT
PIN10	RRROUND

 THIRD ANGLE PROJECTION	GENERAL TOLERANCES (UNLESS SPECIFIED)		APPROVE BY FRANK	DATE 13/JUL/19	PART NO. FCD427-7M	ITEM NO. FCD427	 Leader Of Industry		
	DESIGN UNITS Inch (metric)	X,±.012(0.30) X,XX±.008(0.20) X,XX±.006(0.15) X,XXX±.004(0.10)	X,*±5* .X*±2* .XX*±1* .XXX*±0.5*	CHECKED BY CHERRY	DATE 13/JUL/19	TITLE Mirco SD card connector(H=2.05mm)		REV 0	SHEET NO. 2/3
	SCALE 5:1	SIZE A4		DRAWN BY Aubrey	DATE 13/JUL/19	THIS DRAWING CONTAINS INFORMATION THAT IS PROPRIETARY TO TXGA INDUSTRIAL ELECTRONICS(S.Z)CO.,LTD AND SHOULD NOT BE USED WITHOUT WRITTEN PERMISSION			

REV	LOCATIONS	DESCRIPTION	DATE	REVISER	APPD

- Note:
- 10 sprocket hole cumulative tolerance $\pm 0.008(0.2)$
 - Carrier camber is within 1.0mm in 100mm
 - Material: White Conductive polystyrene Alloy 100% recyclable
 - All dimensions meet EIA-481-3 requirements
 - Component load per 13" reel: 800pcs



A
B
C
D
E
F

A
B
C
D
E
F

 THIRD ANGLE PROJECTION	GENERAL TOLERANCES (UNLESS SPECIFIED)		APPROVE BY FRANK	DATE 13/JUL/19	PART NO. FCD427-7M	ITEM NO. FCD427	 Leader Of Industry	
	DESIGN UNITS Inch (metric)	X,±0.12(0.30)	X,*±5*	CHECKED BY CHERRY	DATE 13/JUL/19	TITLE Micro SD card connector(H=2.05mm)		REV 0
SCALE 5:1	SIZE A4	X,XX±.006(0.15)	XX*±1*	DRAWN BY Aubrey	DATE 13/JUL/19	THIS DRAWING CONTAINS INFORMATION THAT IS PROPRIETARY TO TXGA INDUSTRIAL ELECTRONICS(S.Z)CO.,LTD AND SHOULD NOT BE USED WITHOUT WRITTEN PERMISSION		
		X,XXX±.004(0.10)	XXX*±0.5*					