

REV	LOCATIONS	DESCRIPTION	DATE	REVISER	APPD

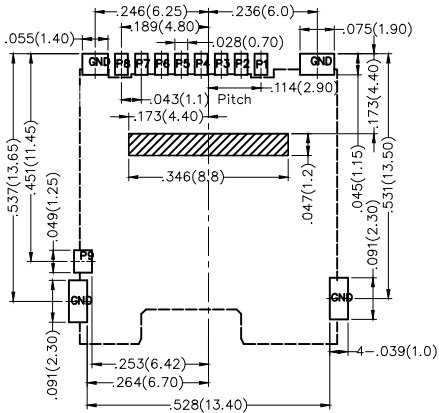
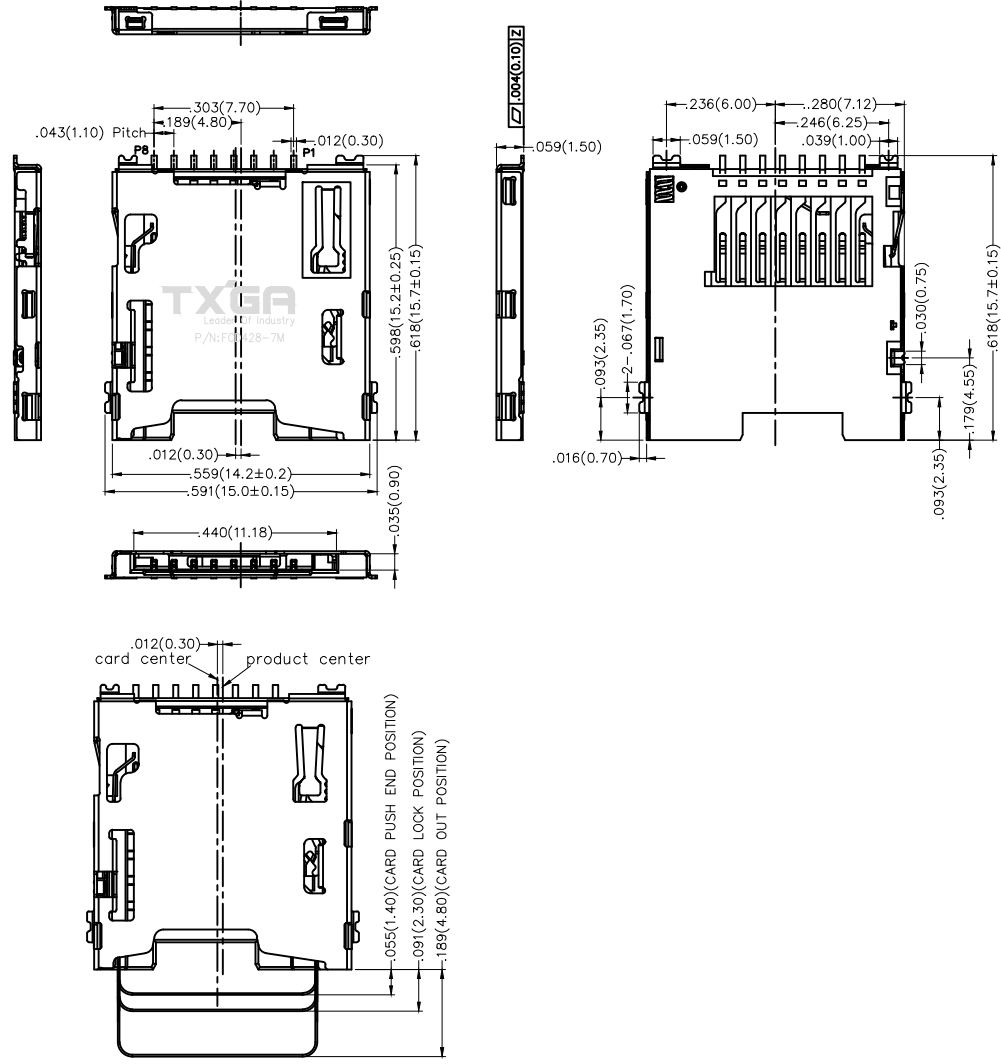
SPECIFICATIONS

Electrical

Current Rating: 0.5A AC(rms)/DC
 Voltage Rating: 100V AC(rms)/DC
 Contact Resistance: 100 mΩ Max
 Insulation Resistance: 1000 MΩ Min
 Withstanding Voltage: 500V AC r.m.s
 Temperature Range—Operating: -25°C~+85°C
 Durability: 5,000 Cycles

Material and Plating

Housing: Thermoplastic (UL 94V-0) Black
 Terminal: Phosphor Bronze/ Gold plated on contact area,
 Matte tin 100u" Min on solder area, 50u" Min nickel
 plating overall
 Shell: Stainless Steel SUS304/ 30u" Min Nickel plated overall,
 Au 1u" Min on solder area.

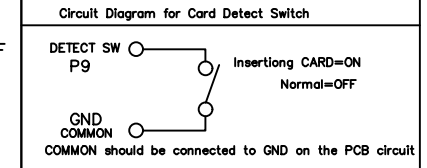


Recommended P.C.Board Layout

Tolerance : ±.002(±0.05)

: Prohibition Area

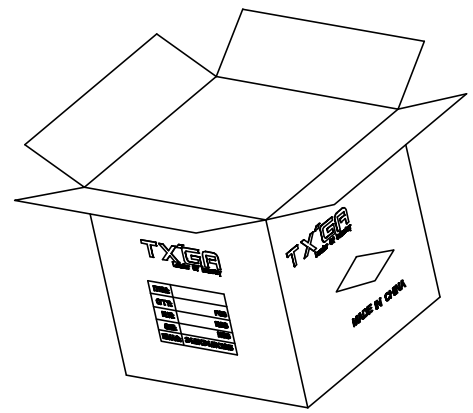
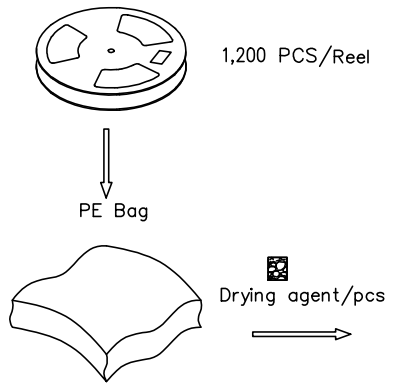
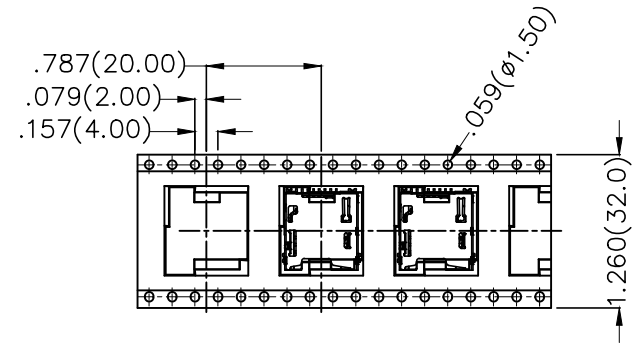
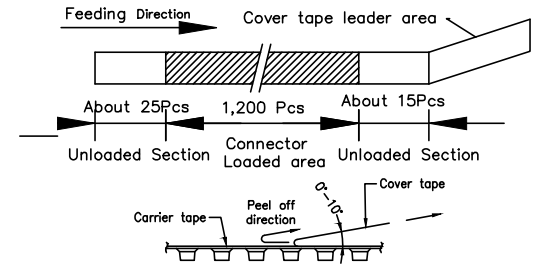
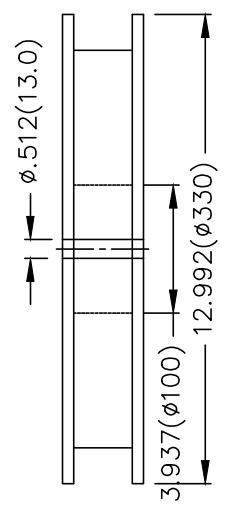
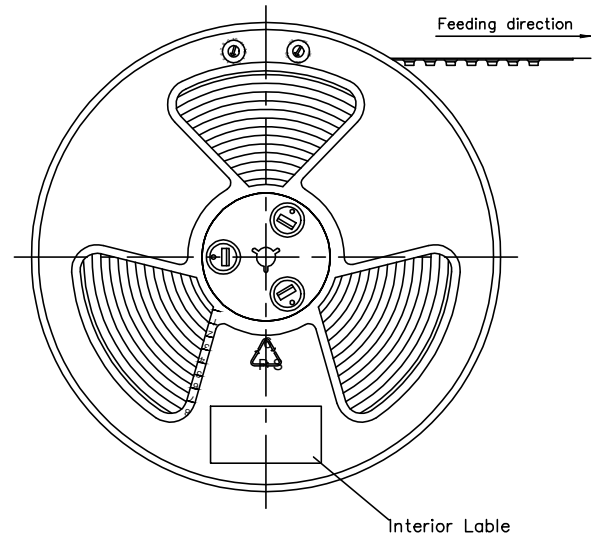
PIN NO.	discription
Pin 1	DAT2:Data line
Pin 2	CD/DAT3: card Detect/Data line
Pin 3	CMD: command/Response
Pin 4	VDD: Supply voltage
Pin 5	CLK: Clock
Pin 6	VSS: Supply voltage ground
Pin 7	DAT0:Data line
Pin 8	DAT1:Data line
Pin 9	DETECT SW(GND)
GND	Cover GND



 THIRD ANGLE PROJECTION DESIGN UNITS Inch (metric) SCALE 5:1 SIZE A4	GENERAL TOLERANCES (UNLESS SPECIFIED)		APPROVE BY FRANK	DATE 18/JUN/17	PART NO. FCD428-7M	ITEM NO. FCD428	 Leader Of Industry
	X.±.012(0.30)	X.±5'	CHECKED BY CHERRY	DATE 18/JUN/17	TITLE Mirco SD card connector(H:1.50mm) (Push to Push)		
	X.X±.008(0.20)	.X'±2'	DRAWN BY KATE	DATE 18/JUN/17	THIS DRAWING CONTAINS INFORMATION THAT IS PROPRIETARY TO TXGA INDUSTRIAL ELECTRONICS(S,Z)CO.,LTD AND SHOULD NOT BE USED WITHOUT WRITTEN PERMISSION		SHEET NO. 1/2
	X.XX±.006(0.15)	.XX'±1'					
	X.XXX±.004(0.10)	.XXX'±0.5'					

REV	LOCATIONS	DESCRIPTION	DATE	REVISED	APPD

- Note:**
- 10 sprocket hole cumulative tolerance $\pm 0.008(0.2)$
 - Carrier camber is within 1.0mm in 100mm
 - Material: White Conductive polystyrene Alloy 100% recyclable
 - All dimensions meet EIA-481-3 requirements
 - Component load per 13" reel: 1,200pcs



<p>THIRD ANGLE PROJECTION</p>	GENERAL TOLERANCES (UNLESS SPECIFIED)		APPROVE BY	DATE	PART NO.	ITEM NO.	<p>Leader Of Industry</p>	
	X. \pm .012(0.30)	X. \pm 5'	FRANK	31/JUL/13	FCD428-7M	FCD428		
	DESIGN UNITS Inch (metric)	X.X \pm .008(0.20)	.X \pm 2'	CHECKED BY	DATE	TITLE		REV 0 SHEET NO. 2/2
	SCALE	X.XX \pm .006(0.15)	.XX \pm 1'	CHERRY	31/JUL/13	Mirco SD card connector(H:1.5mm) (Push to Push)		
SIZE	X.XXX \pm .004(0.10)	.XXX \pm 0.5'	DRAWN BY	DATE	THIS DRAWING CONTAINS INFORMATION THAT IS PROPRIETARY TO TXGA INDUSTRIAL ELECTRONICS(S.Z)CO.,LTD AND SHOULD NOT BE USED WITHOUT WRITTEN PERMISSION			
5:1	A4		JACOB	31/JUL/13				