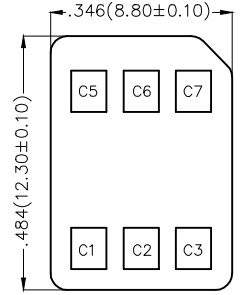
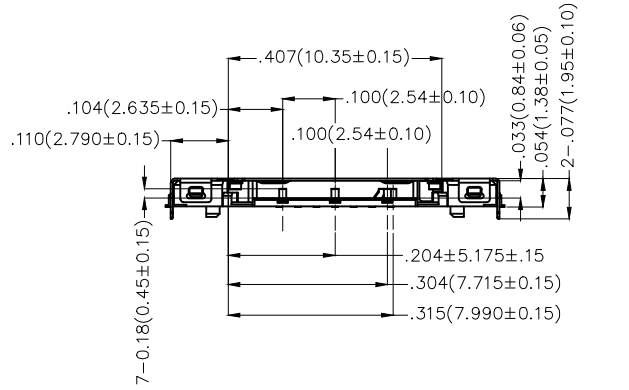
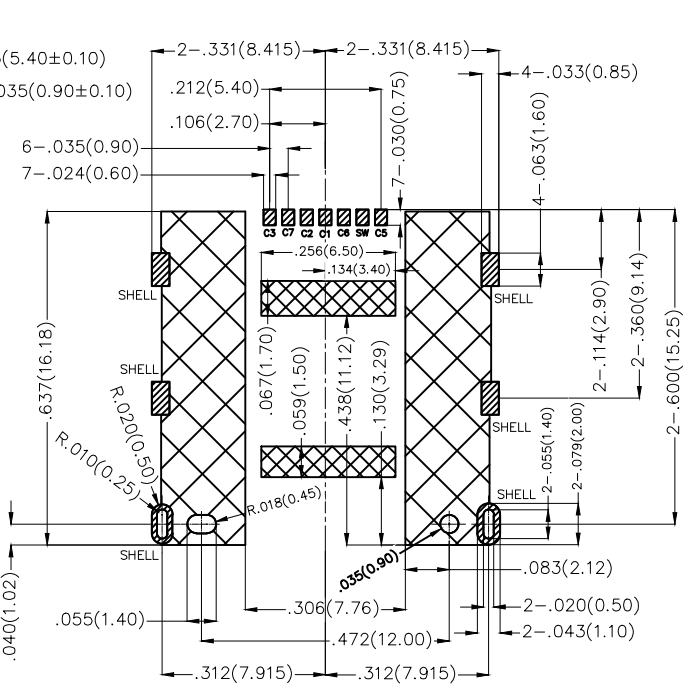
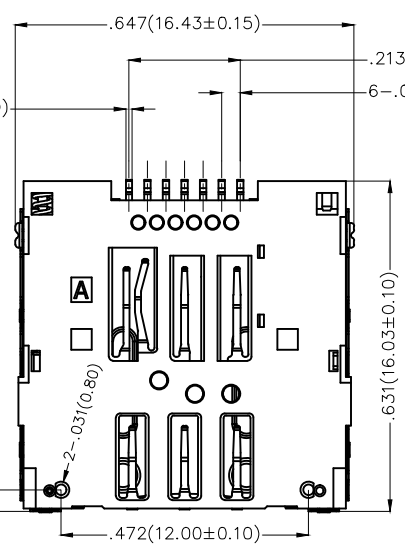
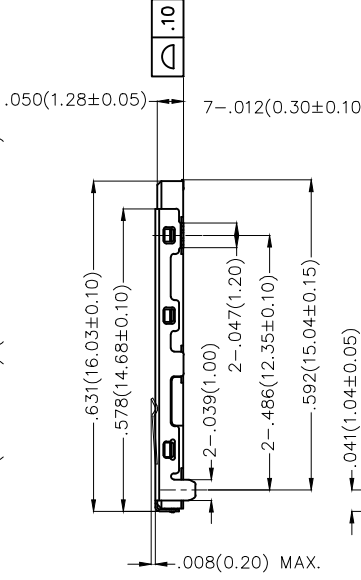
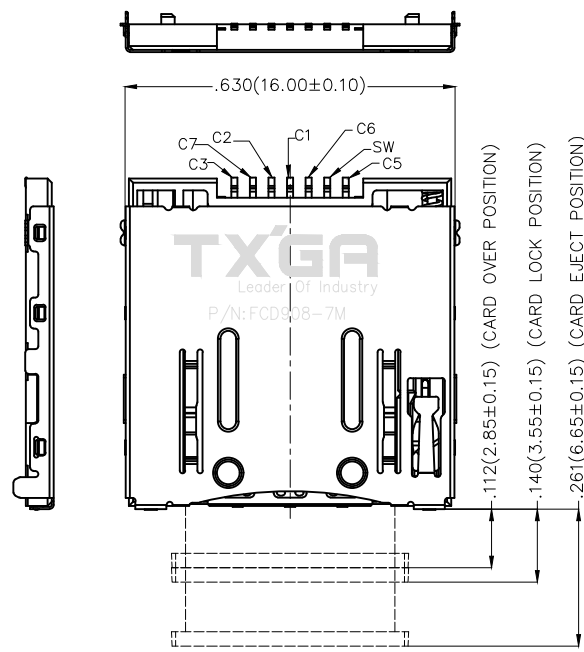


REV	LOCATIONS	DESCRIPTION	DATE	REVISER	APPD
-----	-----------	-------------	------	---------	------

A
B
C
D
E
F

A
B
C
D
E
F



SIM CARD LAYOUT

Recommended P.C.Board Layout
General tolerances: ±.002(0.05)

- PAD AREA
- NO TRACE , NO TEST POINT, NO VIA HOLE, NO GROUND AREA
- PATTERNS ONLY FOR GND

Electrical
Current Rating: 0.5A AC(rms)/DC
Voltage Rating: 30V AC(rms)/DC
Contact Resistance: 50 mΩ Max
Insulation Resistance: 100 MΩ MIN
Withstanding Voltage: 500V AC r.m.s
Temperature Range—Operating: -30°C~+85°C

Material and Plating
Housing: LCP Black Color
Shell: SUS304 Nickel Plating
Contact Pin: Phosphor Bronze
Plating: Selective gold in contact area, Tin on tail.

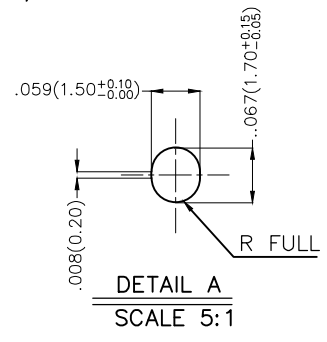
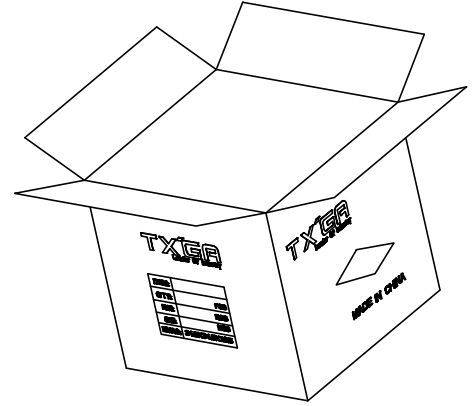
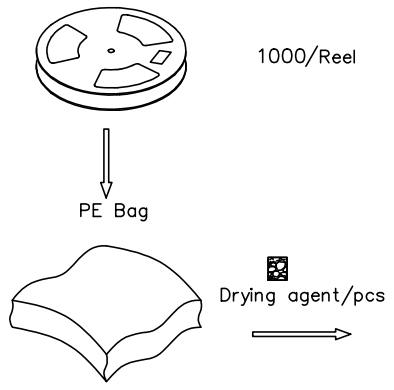
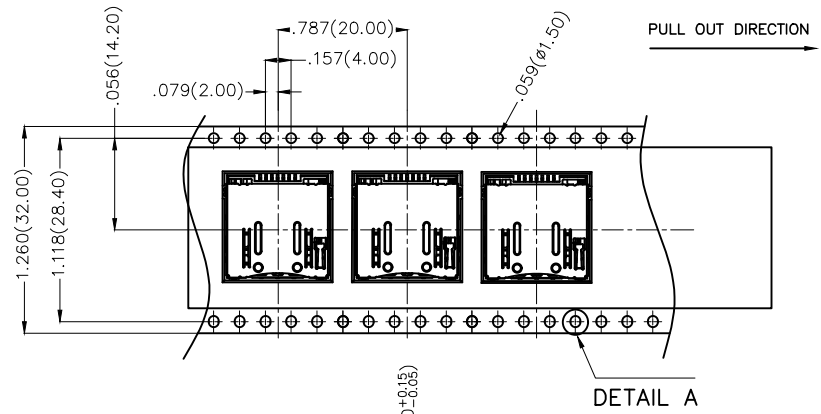
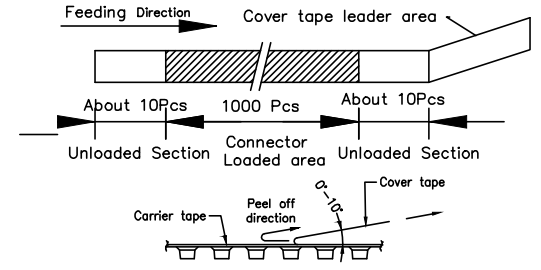
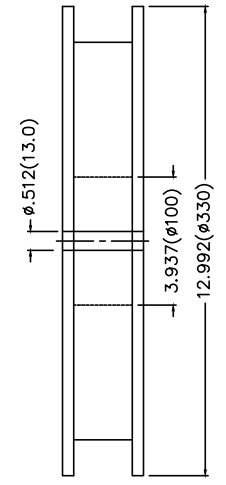
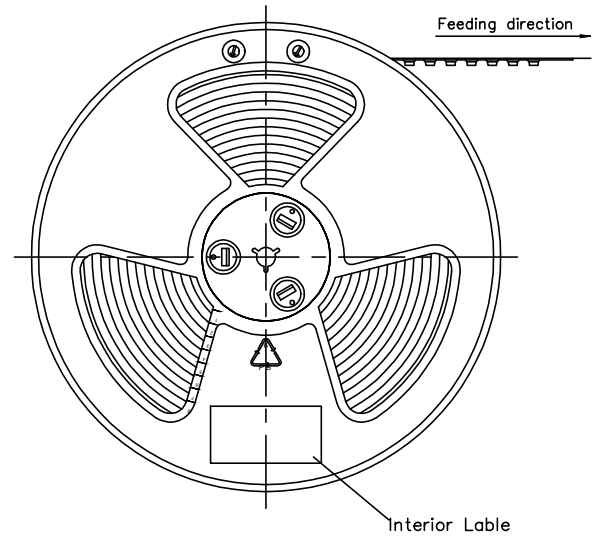
Connector Pin Assignment

No.	Pin Name	Description
①	C1	Vcc of SIM
②	C2	RST of SIM
③	C3	CLK of SIM
④	C5	GND of SIM
⑤	C6	Vpp of SIM
⑥	C7	I/O of SIM
⑦	SW	Detection Switch (Normal Open)

 THIRD ANGLE PROJECTION DESIGN UNITS Inch (metric) SCALE 5:1 SIZE A4	GENERAL TOLERANCES (UNLESS SPECIFIED)		APPROVE BY FRANK	DATE 12/JUL/19	PART NO. FCD908-7M	ITEM NO. FCD908	 Leader Of Industry REV 0 SHEET NO. 1/2 THIS DRAWING CONTAINS INFORMATION THAT IS PROPRIETARY TO TXGA INDUSTRIAL ELECTRONICS(S.Z)CO.,LTD AND SHOULD NOT BE USED WITHOUT WRITTEN PERMISSION
	X.±.012(0.30)	X.±5'	CHECKED BY CHERRY	DATE 12/JUL/19	TITLE Nano SIM Push H1.38 With Tray		
	X.X±.008(0.20)	.X'±2'	DRAWN BY ZOEY	DATE 12/JUL/19			
	X.XX±.006(0.15)	.XX'±1'					
	X.XXX±.004(0.10)	.XXX'±0.5'					

REV	LOCATIONS	DESCRIPTION	DATE	REVISED	APPD

- Note:
1. 10 sprocket hole cumulative tolerance ± 0.2
 2. Carrier camber is within 1.0mm in 100mm
 3. Material: White Conductive polystyrene Alloy 100% recyclable
 4. All dimensions meet EIA-481-3 requirements
 5. Component load per 13" reel: 1000pcs



<p>THIRD ANGLE PROJECTION</p>	GENERAL TOLERANCES (UNLESS SPECIFIED)		APPROVE BY	DATE	PART NO.	ITEM NO.	<p>Leader Of Industry</p>
	X. \pm .012(0.30)	X. \pm 5'	FRANK	11/JUL/19	FCD908-7M	FCD908	
	X.X \pm .008(0.20)	.X \pm 2'	CHECKED BY	DATE	TITLE		<p>REV 0</p> <p>SHEET NO. 2/2</p>
	X.XX \pm .006(0.15)	.XX \pm 1'	CHERRY	11/JUL/19	Nano SIM Push H1.38 With Tray		
SCALE	SIZE	X.XXX \pm .004(0.10)	.XXX \pm 0.5'	DRAWN BY	DATE	THIS DRAWING CONTAINS INFORMATION THAT IS PROPRIETARY TO TXGA INDUSTRIAL ELECTRONICS(S.Z)CO.,LTD AND SHOULD NOT BE USED WITHOUT WRITTEN PERMISSION	
5:1	A4	ZOEY	ZOEY	11/JUL/19	11/JUL/19		