

REV	LOCATIONS	DESCRIPTION	DATE	REVISER	APPD

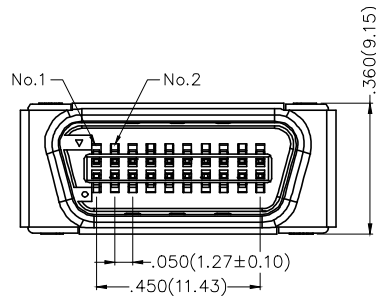
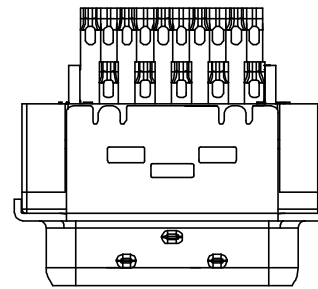
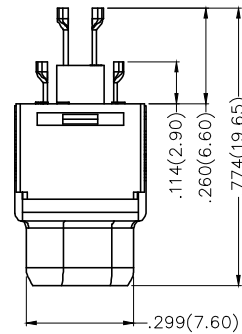
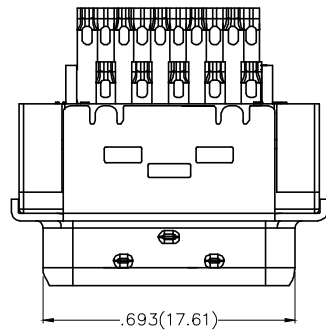
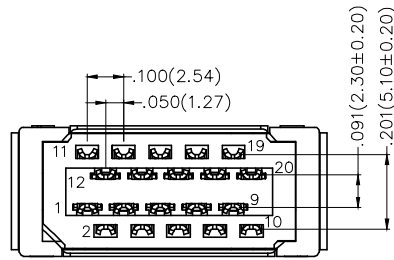
SPECIFICATIONS

Electrical

Current Rating: 1A AC(rms)/DC
 Voltage Rating: 40V AC(rms) 500V DC
 Contact Resistance: 35 mΩ Max
 Insulation Resistance: 200 MΩ Min
 Withstanding Voltage: 500V AC r.m.s
 Temperature Range-Operating: -25°C~+85°C

Material and Plating

Housing: PBT (UL 94V-0), Black
 Contact: Phosphor Bronze/ Selective gold in contact area, tin on tail
 Cover: Copper Alloy/ Nickel plated
 Shell: SPCC/ Nickel plated



Ordering Information

FCS 20 04 — M0 W S 3 XX K6 K
 1 2 3 4 5 6 7 8 9 10

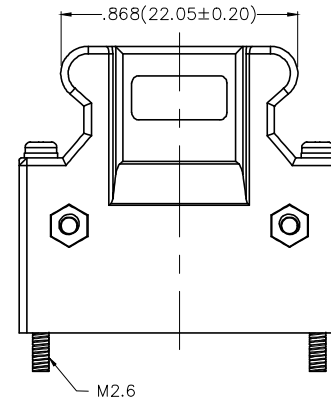
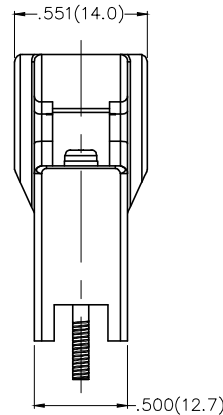
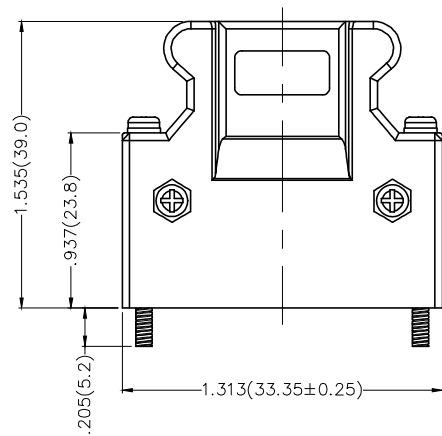
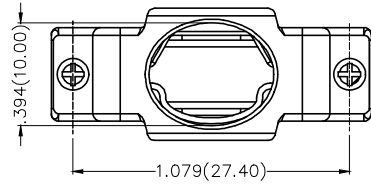
1	Category	2	Circuits	3	Distinction No.	4	Type	5	Assembly Layout	6	Entry Angle
	FCS-SCSI		20		04		M0-Male		W-Welding Type		S-180° Vertical
7	Plating	8	Thickness of Plating	9	Color-Resin	10	Packaging				
	3-Selective gold in contact area, tin on tail		00-Gold flash 03-3μ" Custom plate available		K6-Black		K-Tray				

 THIRD ANGLE PROJECTION DESIGN UNITS Inch (metric) SCALE 5:1 SIZE A4	GENERAL TOLERANCES (UNLESS SPECIFIED)		APPROVE BY	DATE	PART NO.	ITEM NO.	 Leader Of Industry	
	X.±.012(0.30)	.X'±5'	FRANK	19/JUL/13	FCS2004-M0WS3XXK6K	FCS2004		
	X.X±.008(0.20)	.X'±2'	CHECKED BY	DATE	TITLE		REV 0	SHEET NO. 1/2
	X.XX±.006(0.15)	.XX'±1'	CHERRY	19/JUL/13	SCSI Connector Pitch 1.27mm 180° Vertical Male		THIS DRAWING CONTAINS INFORMATION THAT IS PROPRIETARY TO TXGA INDUSTRIAL ELECTRONICS(S.Z)CO.,LTD AND SHOULD NOT BE USED WITHOUT WRITTEN PERMISSION	
X.XXX±.004(0.10)	.XXX'±0.5'	DRAWN BY	DATE					
		KEVIN	19/JUL/13					

REV	LOCATIONS	DESCRIPTION	DATE	REVISER	APPD

Material—Cover

Plastic cover: PBT (UL 94V-0), Black
 Clamp: SPCC



 THIRD ANGLE PROJECTION	GENERAL TOLERANCES (UNLESS SPECIFIED)		APPROVE BY FRANK	DATE 19/JUL/13	PART NO. FCS2004-M0WS3XXK6K	ITEM NO. FCS2004	 Leader Of Industry	
	X ± .012 (0.30)	X . ± 5'	CHECKED BY CHERRY	DATE 19/JUL/13	TITLE SCSI Connector Pitch 1.27mm 180° Vertical Male			REV 0
	DESIGN UNITS Inch (metric)	X.X ± .008 (0.20)	.X ± 2'	DRAWN BY KEVIN	DATE 19/JUL/13	THIS DRAWING CONTAINS INFORMATION THAT IS PROPRIETARY TO TXGA INDUSTRIAL ELECTRONICS(S.Z)CO.,LTD AND SHOULD NOT BE USED WITHOUT WRITTEN PERMISSION		
	SCALE 5:1	SIZE A4	X.XX ± .006 (0.15)	.XX ± 1'				