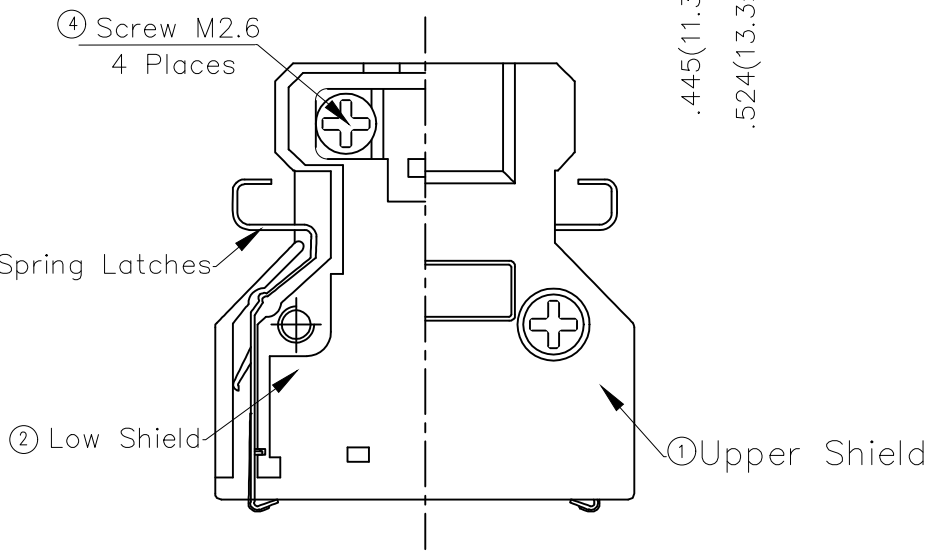
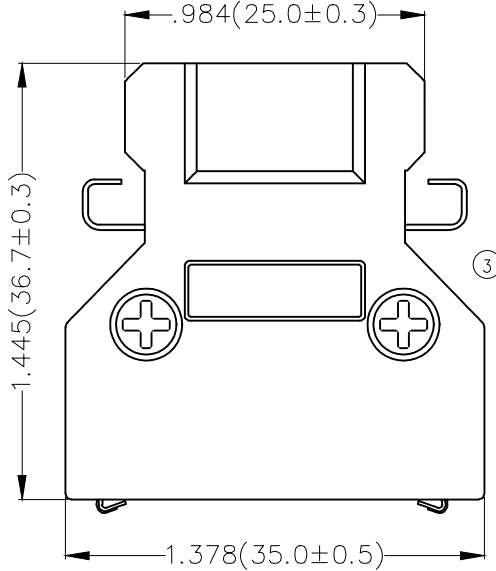
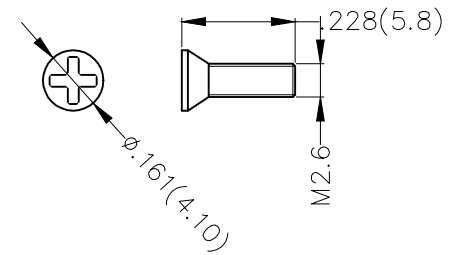
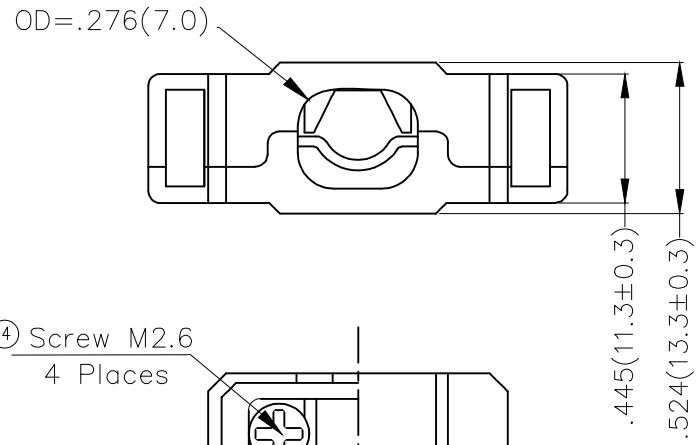
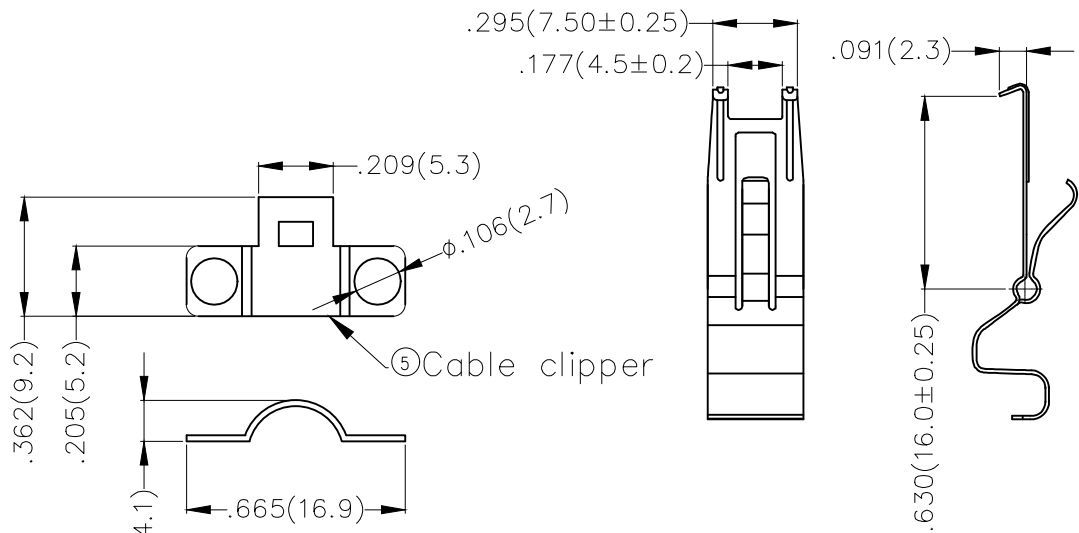


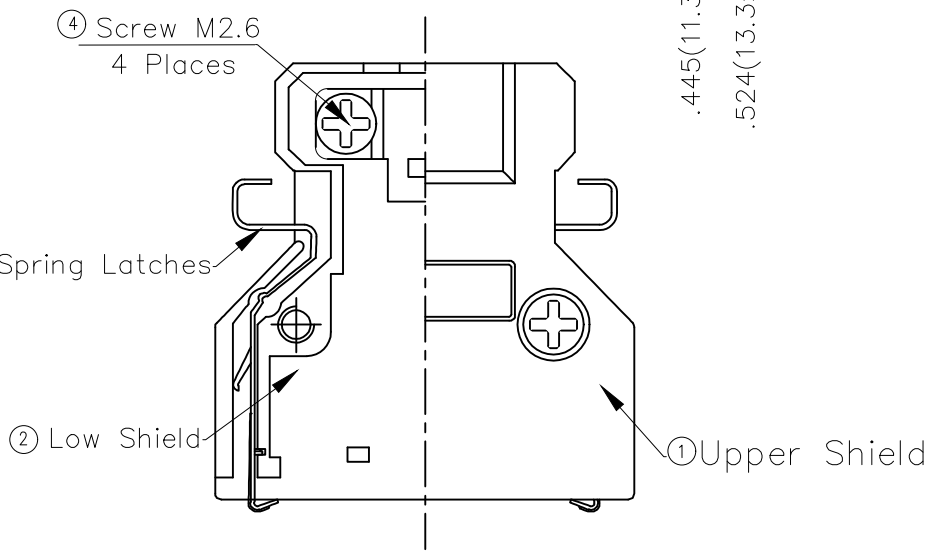
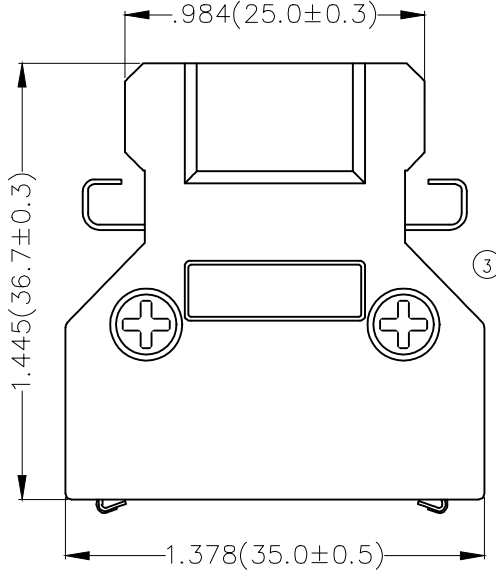
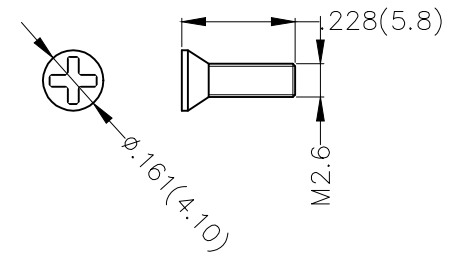
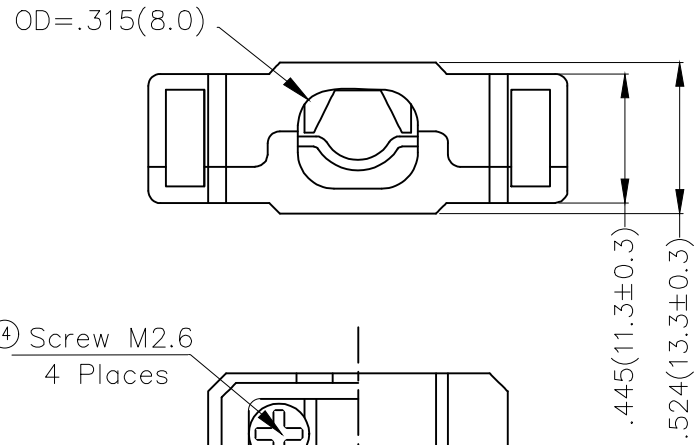
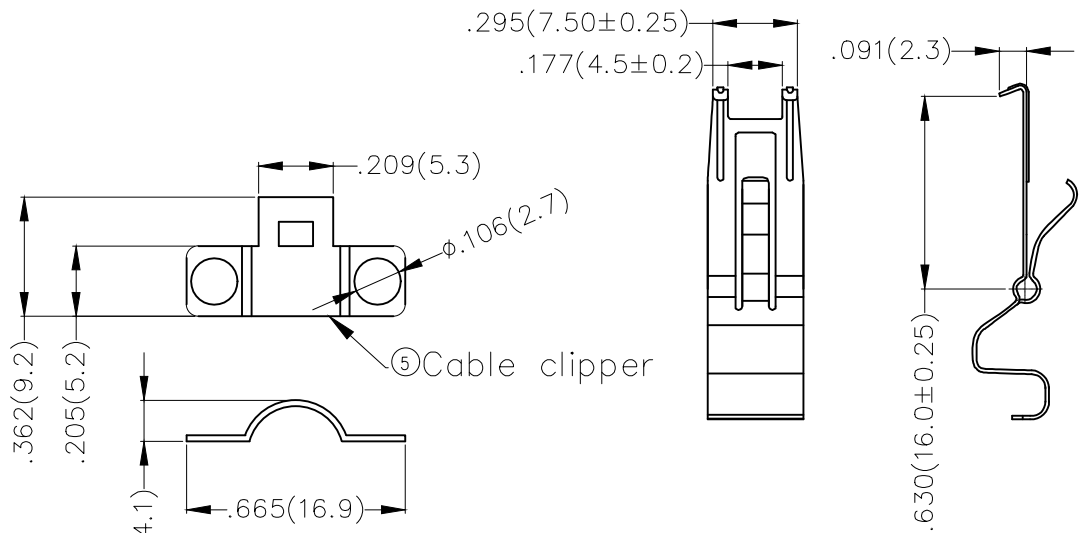
REV	LOCATIONS	DESCRIPTION	DATE	REVISER	APPD



ITEM	PART NAME	Q'TY	NOTES
1	Upper shield	1	Zinc Alloy ,Nickel Plated Over Copper
2	Low shield	1	Zinc Alloy ,Nickel Plated Over Copper
3	Spring latches	2	Stainless Steel
4	Screw M2.6	4	Steel ,Nickel Plated Over Copper
5	Cable clipper	2	Steel ,Nickel Plated Over Copper

 THIRD ANGLE PROJECTION	GENERAL TOLERANCES (UNLESS SPECIFIED)		APPROVE BY FRANK	DATE 18/JUN/13	PART NO. FCS2608-C100BA	ITEM NO. FCS2608	 Leader Of Industry	
	DESIGN UNITS Inch (metric)	X.±.012(0.30) X.X±.008(0.20) X.XX±.006(0.15) X.XXX±.004(0.10)	X'±5' X'±2' .XX'±1" .XXX'±0.5"	CHECKED BY CHERRY	DATE 18/JUN/13	TITLE SCSI Connector 26 circuits Cover		REV 0
SCALE 5:1	SIZE A4	DRAWN BY KATE		DATE 18/JUN/13	THIS DRAWING CONTAINS INFORMATION THAT IS PROPRIETARY TO TXGA INDUSTRIAL ELECTRONICS(S.Z)CO.,LTD AND SHOULD NOT BE USED WITHOUT WRITTEN PERMISSION			

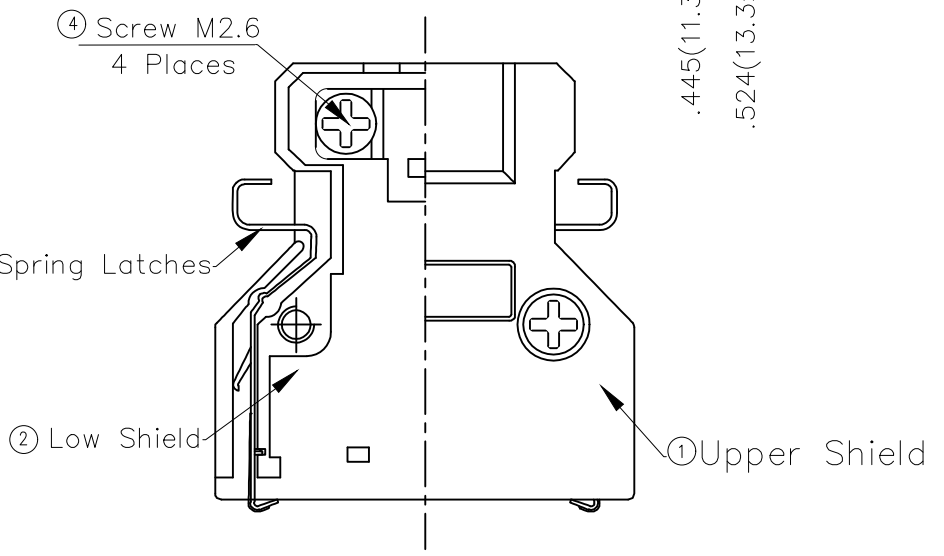
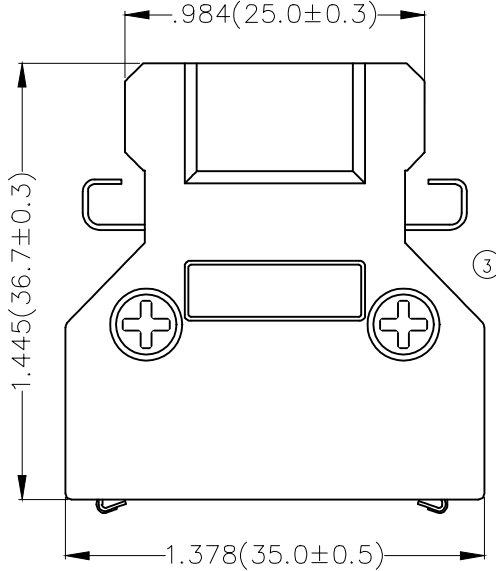
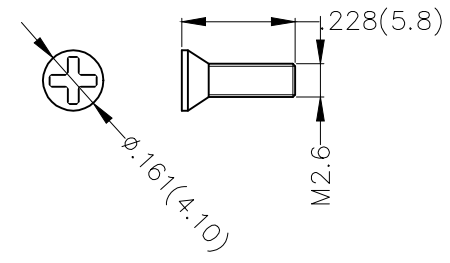
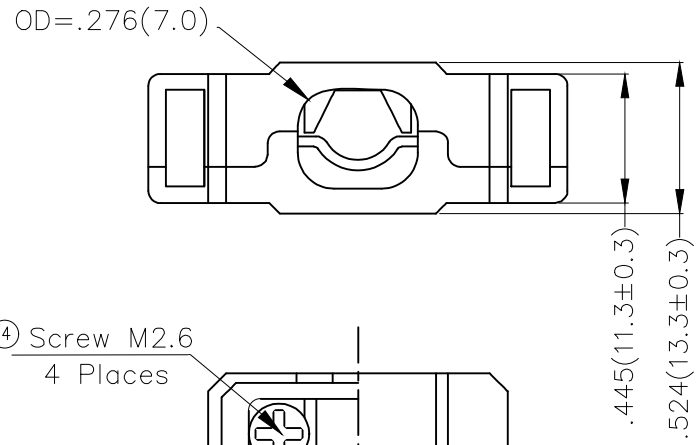
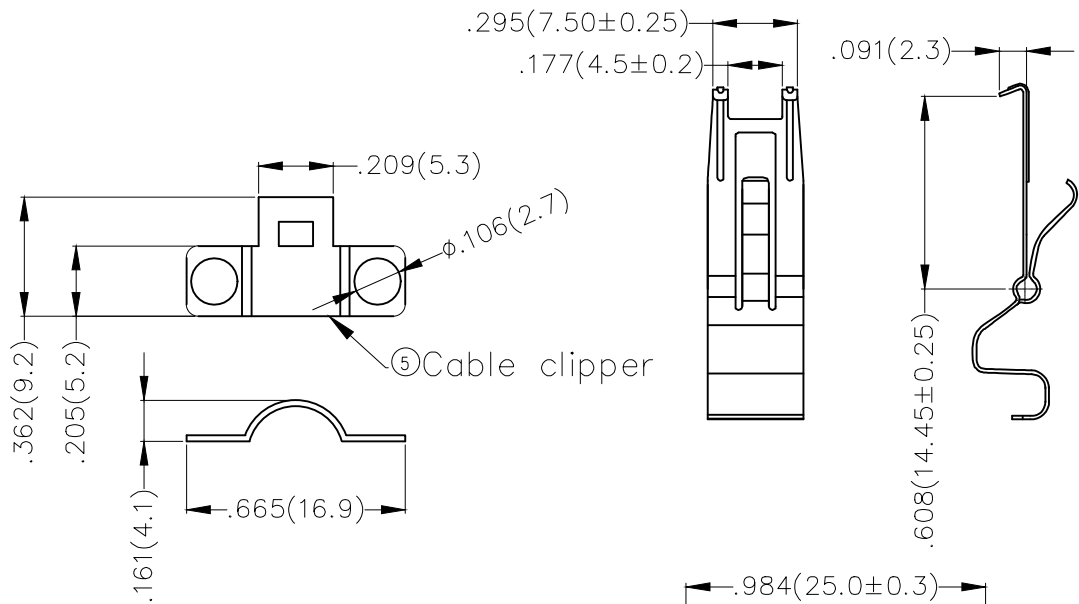
REV	LOCATIONS	DESCRIPTION	DATE	REVISER	APPD



ITEM	PART NAME	Q'TY	NOTES
1	Upper shield	1	Zinc Alloy ,Nickel Plated Over Copper
2	Low shield	1	Zinc Alloy ,Nickel Plated Over Copper
3	Spring latches	2	Stainless Steel
4	Screw M2.6	4	Steel ,Nickel Plated Over Copper
5	Cable clipper	2	Steel ,Nickel Plated Over Copper

 THIRD ANGLE PROJECTION	GENERAL TOLERANCES (UNLESS SPECIFIED)		APPROVE BY	DATE	PART NO.	ITEM NO.	 Leader Of Industry	
	X.±.012(0.30)	X'±5'	FRANK	18/JUN/13	FCS2608-C100BB	FCS2608		
	DESIGN UNITS	X.X±.008(0.20)	X'±2'	CHECKED BY	DATE	TITLE		
	Inch (metric)	X.XX±.006(0.15)	.XX'±1'	CHERRY	18/JUN/13	SCSI Connector 26 circuits Cover		
SCALE	SIZE	X.XXX±.004(0.10)	.XXX'±0.5'	DRAWN BY	DATE	THIS DRAWING CONTAINS INFORMATION THAT IS PROPRIETARY TO TXGA INDUSTRIAL ELECTRONICS(S.Z)CO.,LTD AND SHOULD NOT BE USED WITHOUT WRITTEN PERMISSION		
5:1	A4			KATE	18/JUN/13	REV 0	SHEET NO. 1/1	

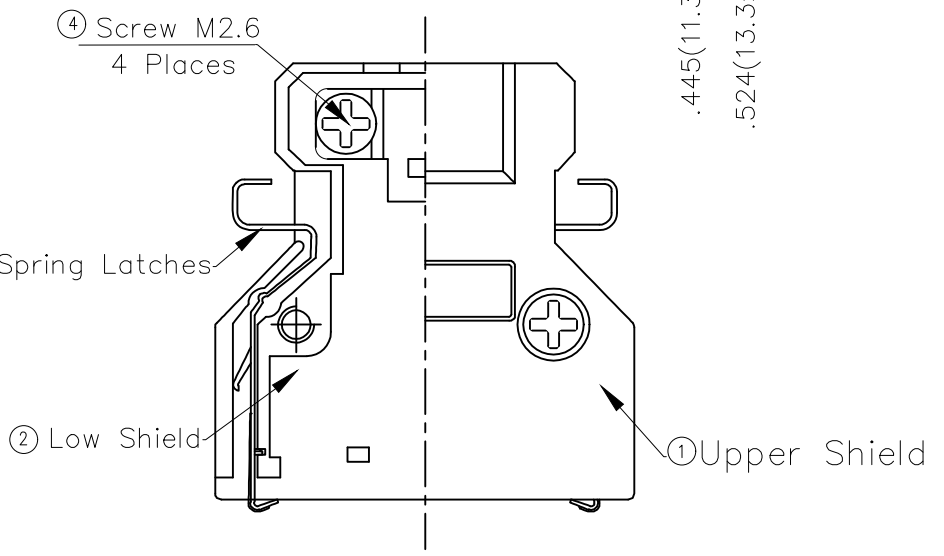
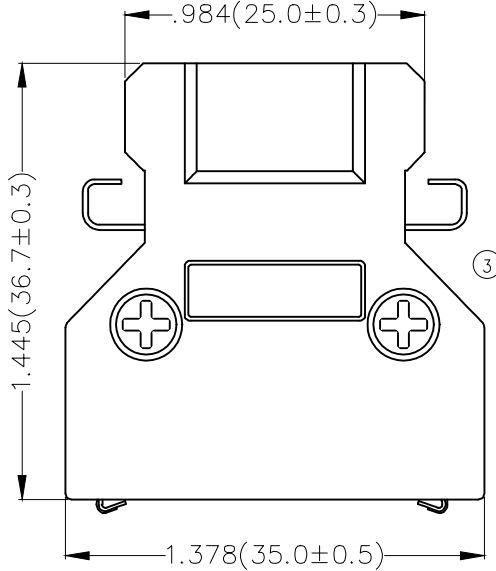
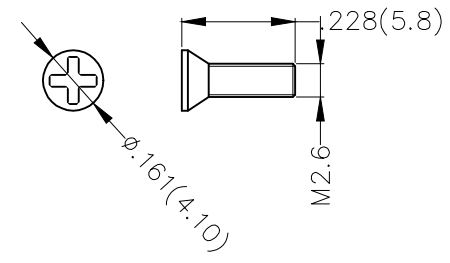
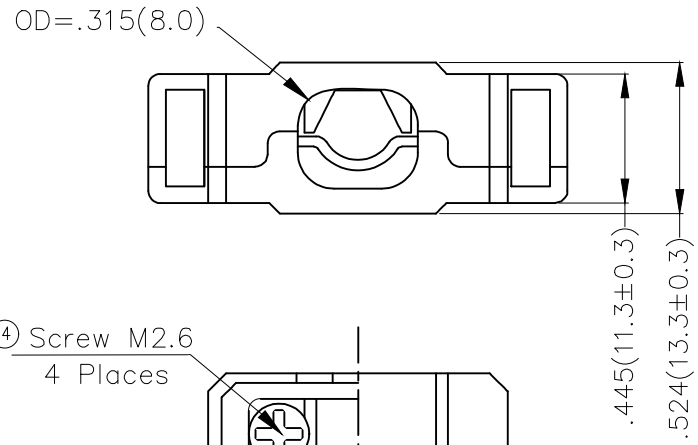
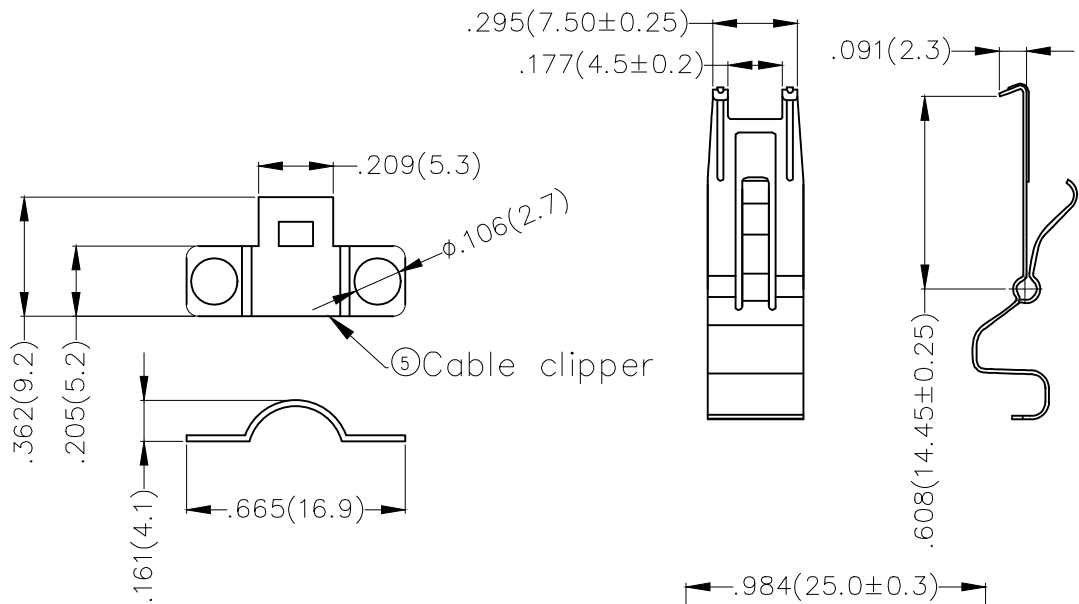
REV	LOCATIONS	DESCRIPTION	DATE	REVISER	APPD



ITEM	PART NAME	Q'TY	NOTES
1	Upper shield	1	Zinc Alloy ,Nickel Plated Over Copper
2	Low shield	1	Zinc Alloy ,Nickel Plated Over Copper
3	Spring latches	2	Stainless Steel
4	Screw M2.6	4	Steel ,Nickel Plated Over Copper
5	Cable clipper	2	Steel ,Nickel Plated Over Copper

 THIRD ANGLE PROJECTION	GENERAL TOLERANCES (UNLESS SPECIFIED)		APPROVE BY FRANK	DATE 18/JUN/13	PART NO. FCS2608-C100BC	ITEM NO. FCS2608	 Leader Of Industry	
	DESIGN UNITS Inch (metric)	X.±.012(0.30) X.X±.008(0.20) X.XX±.006(0.15) X.XXX±.004(0.10)	X'±5' X'±2' .XX'±1" .XXX'±0.5'	CHECKED BY CHERRY	DATE 18/JUN/13	TITLE SCSI Connector 26 circuits Cover		REV 0
SCALE 5:1	SIZE A4	DRAWN BY KATE		DATE 18/JUN/13	THIS DRAWING CONTAINS INFORMATION THAT IS PROPRIETARY TO TXGA INDUSTRIAL ELECTRONICS(S.Z)CO.,LTD AND SHOULD NOT BE USED WITHOUT WRITTEN PERMISSION			

REV	LOCATIONS	DESCRIPTION	DATE	REVISER	APPD



ITEM	PART NAME	Q'TY	NOTES
1	Upper shield	1	Zinc Alloy ,Nickel Plated Over Copper
2	Low shield	1	Zinc Alloy ,Nickel Plated Over Copper
3	Spring latches	2	Stainless Steel
4	Screw M2.6	4	Steel ,Nickel Plated Over Copper
5	Cable clipper	2	Steel ,Nickel Plated Over Copper

 THIRD ANGLE PROJECTION	GENERAL TOLERANCES (UNLESS SPECIFIED)		APPROVE BY	DATE	PART NO.	ITEM NO.	 Leader Of Industry
	X.±.012(0.30)	X'±5'	FRANK	18/JUN/13	FCS2608-C100BD	FCS2608	
DESIGN UNITS	X.X±.008(0.20)	X'±2'	CHECKED BY	DATE	TITLE		THIS DRAWING CONTAINS INFORMATION THAT IS PROPRIETARY TO TXGA INDUSTRIAL ELECTRONICS(S.Z)CO.,LTD AND SHOULD NOT BE USED WITHOUT WRITTEN PERMISSION
Inch (metric)	X.XX±.006(0.15)	.XX'±1'	CHERRY	18/JUN/13	SCSI Connector 26 circuits Cover		
SCALE	X.XXX±.004(0.10)	.XXX'±0.5'	DRAWN BY	DATE	REV 0	SHEET NO. 1/1	
5:1			KATE	18/JUN/13			