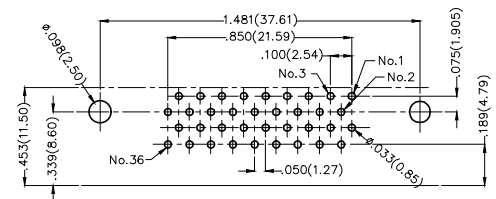
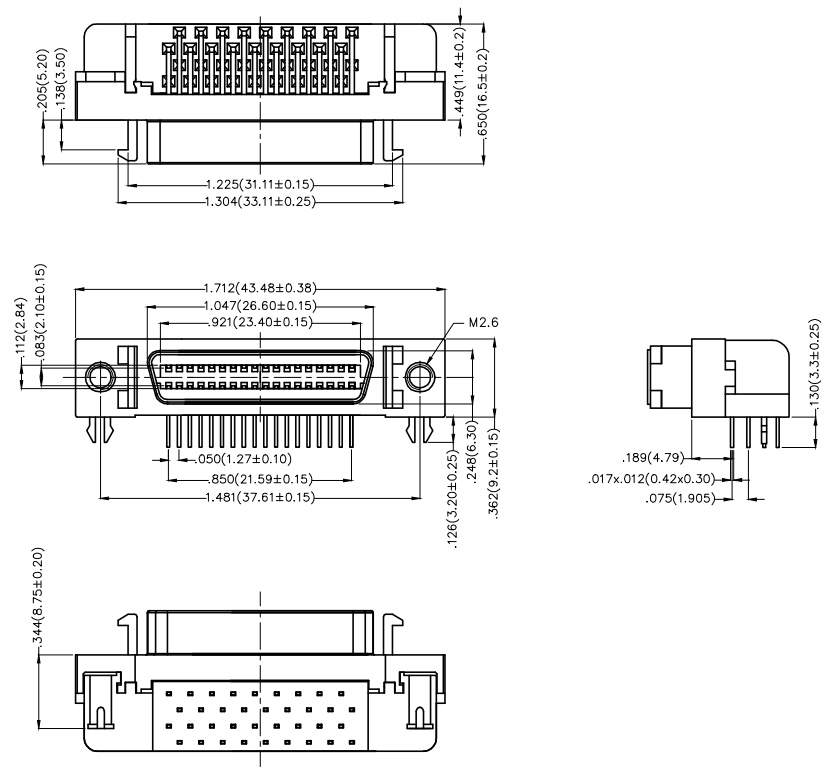


| REV | LOCATIONS | DESCRIPTION | DATE | REVISER | APPD |
|-----|-----------|-------------|------|---------|------|
| | | | | | |

SPECIFICATIONS

Electrical
 Current Rating: 1A AC(rms)/DC
 Voltage Rating: 250V AC(rms)/DC
 Contact Resistance: 30 mΩ Max
 Insulation Resistance: 500 MΩ Min
 Withstanding Voltage: 500V AC r.m.s
 Temperature Range—Operating: -55°C~+105°C

Material and Plating
 Housing: PBT (UL 94V-0)
 Contact: Phosphor Bronze
 Contact plating: Selective gold in contact area, tin on tail
 Shell: Zinc Alloy



Recommended P.C. Board Layout
 General Tolerances: ±0.05mm

Ordering Information

FCS 36 01 — FO D B 3 XX K6 K A
 1 2 3 4 5 6 7 8 9 10 11

| | | | | | | | | | | | |
|---|--|---|---|---|-------------------------|----|---------------------|----|------------------------------|---|----------------------------|
| 1 | Category FCS-SCSI | 2 | Circuits 36 | 3 | Distinction No. 01 | 4 | Type FO-Female | 5 | Assembly Layout D-DIP | 6 | Entry Angle B-90° Angle |
| 7 | Plating 3-Selective gold in contact area, tin on tail | 8 | Thickness of Plating 00-Gold flash 03-3μ" Custom plate available | 9 | Color-Resin K6-Black | 10 | Packaging K-Tray | 11 | Distinction Type A-Type A | | |

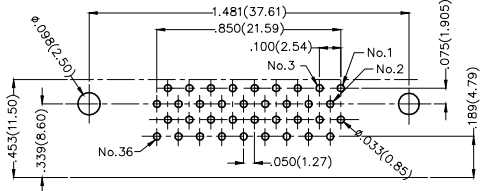
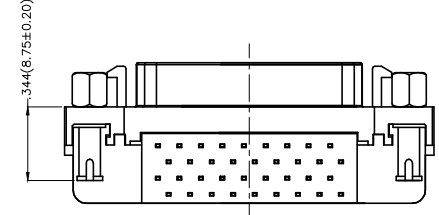
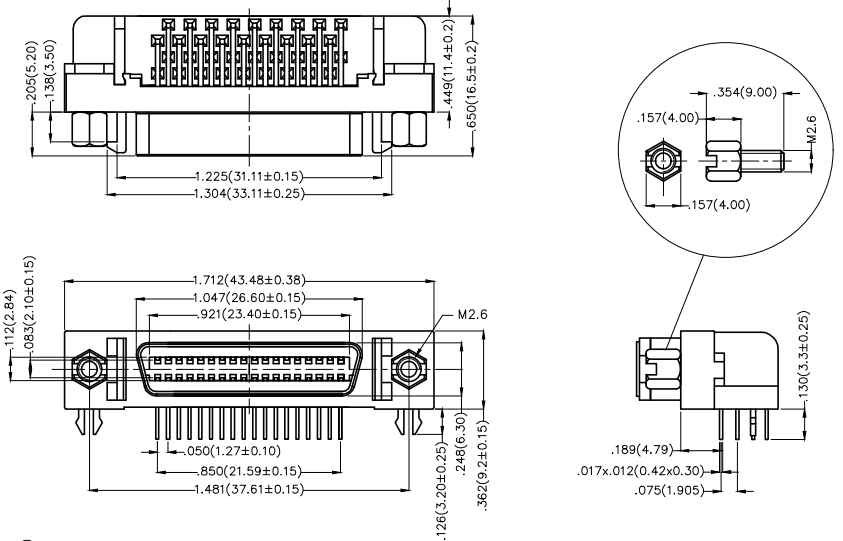
| | | | | | | | | |
|----------------------------|---------------------------------------|-----------------|----------------------|-------------------|--|--|------------------------|-------|
| THIRD ANGLE PROJECTION | GENERAL TOLERANCES (UNLESS SPECIFIED) | | APPROVE BY FRANK | DATE 19/JUL/13 | PART NO. FCS3601-F0DB3XXK6KA | ITEM NO. FCS3601 | Leader Of Industry | |
| | X.±.012(0.30) | X.'±5' | CHECKED BY CHERRY | DATE 19/JUL/13 | TITLE SCSI Connector Pitch 1.27mm 90° Angle Female | | | REV 0 |
| | DESIGN UNITS Inch (metric) | X.XX±.008(0.20) | X'±2' | DRAWN BY KEVIN | DATE 19/JUL/13 | THIS DRAWING CONTAINS INFORMATION THAT IS PROPRIETARY TO TXGA INDUSTRIAL ELECTRONICS(S.Z)CO.,LTD AND SHOULD NOT BE USED WITHOUT WRITTEN PERMISSION | | |

| REV | LOCATIONS | DESCRIPTION | DATE | REVISER | APPD |
|-----|-----------|-------------|------|---------|------|
| | | | | | |

SPECIFICATIONS

Electrical
 Current Rating: 1A AC(rms)/DC
 Voltage Rating: 250V AC(rms)/DC
 Contact Resistance: 30 mΩ Max
 Insulation Resistance: 500 MΩ Min
 Withstanding Voltage: 500V AC r.m.s
 Temperature Range—Operating: -55°C~+105°C

Material and Plating
 Housing: PBT (UL 94V-0)
 Contact: Phosphor Bronze
 Contact plating: Selective gold in contact area, tin on tail
 Shell: Zinc Alloy



Recommended P.C.Board Layout
 General Tolerances: ±0.05mm

Ordering Information

FCS 36 01 — FO D B 3 XX K6 K B
 1 2 3 4 5 6 7 8 9 10 11

| | | | | | | | | | | | |
|---|--|---|---|---|-------------------------|----|---------------------|----|------------------------------|---|----------------------------|
| 1 | Category FCS-SCSI | 2 | Circuits 36 | 3 | Distinction No. 01 | 4 | Type FO-Female | 5 | Assembly Layout D-DIP | 6 | Entry Angle B-90° Angle |
| 7 | Plating 3-Selective gold in contact area, tin on tail | 8 | Thickness of Plating 00-Gold flash 03-3μ" Custom plate available | 9 | Color-Resin K6-Black | 10 | Packaging K-Tray | 11 | Distinction Type B-Type B | | |

| | | | | | | | | |
|----------------------------|---------------------------------------|----------------|----------------------|-------------------|--|--|------------------------|-------|
| THIRD ANGLE PROJECTION | GENERAL TOLERANCES (UNLESS SPECIFIED) | | APPROVE BY FRANK | DATE 19/JUL/13 | PART NO. FCS3601-F0DB3XXK6K | ITEM NO. FCS3601 | Leader Of Industry | |
| | X.±.012(0.30) | X.'±5' | CHECKED BY CHERRY | DATE 19/JUL/13 | TITLE SCSI Connector Pitch 1.27mm 90° Angle Female | | | REV 0 |
| | DESIGN UNITS Inch (metric) | X.X±.008(0.20) | X.'±2' | DRAWN BY KEVIN | DATE 19/JUL/13 | THIS DRAWING CONTAINS INFORMATION THAT IS PROPRIETARY TO TXGA INDUSTRIAL ELECTRONICS(S.Z)CO.,LTD AND SHOULD NOT BE USED WITHOUT WRITTEN PERMISSION | | |

| REV | LOCATIONS | DESCRIPTION | DATE | REVISER | APPD |
|-----|-----------|-------------|------|---------|------|
| | | | | | |

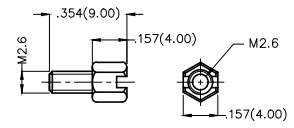
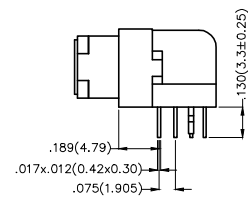
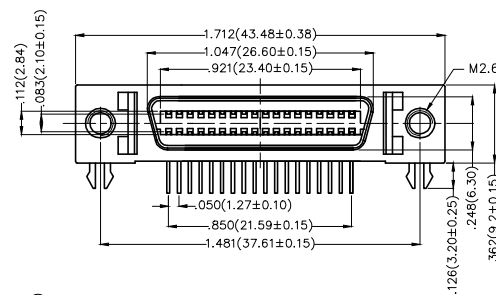
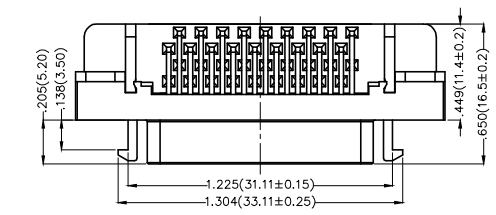
SPECIFICATIONS

Electrical

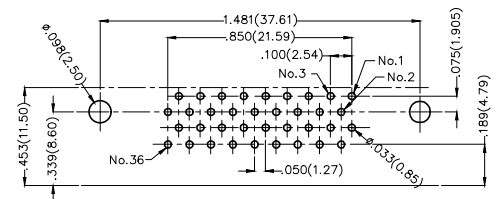
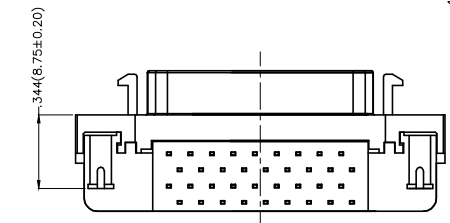
Current Rating: 1A AC(rms)/DC
Voltage Rating: 250V AC(rms)/DC
Contact Resistance: 30 mΩ Max
Insulation Resistance: 500 MΩ Min
Withstanding Voltage: 500V AC r.m.s
Temperature Range—Operating: -55°C~+105°C

Material and Plating

Housing: PBT (UL 94V-0)
Contact: Phosphor Bronze
Contact plating: Selective gold in contact area, tin on tail
Shell: Zinc Alloy



Screw (2pcs)



Recommended P.C.Board Layout
General Tolerances: ±0.05mm

Ordering Information

FCS 36 01 — F0 D B 3 XX K6 K C
1 2 3 4 5 6 7 8 9 10 11

| | | | | | | | | | | | |
|---|--|---|---|---|-------------------------|----|---------------------|----|------------------------------|---|----------------------------|
| 1 | Category FCS-SCSI | 2 | Circuits 36 | 3 | Distinction No. 01 | 4 | Type F0-Female | 5 | Assembly Layout D-DIP | 6 | Entry Angle B-90° Angle |
| 7 | Plating 3-Selective gold in contact area, tin on tail | 8 | Thickness of Plating 00-Gold flash 03-3μ" Custom plate available | 9 | Color-Resin K6-Black | 10 | Packaging K-Tray | 11 | Distinction Type C-Type C | | |

| | | | | | | | | |
|-------------------------------|--|--|--|----------------------|--|--|------------------------|-------|
| THIRD ANGLE PROJECTION | GENERAL TOLERANCES (UNLESS SPECIFIED) | | APPROVE BY FRANK | DATE 19/JUL/13 | PART NO. FCS3601-F0DB3XXK6K | ITEM NO. FCS3601 | Leader Of Industry | |
| | DESIGN UNITS Inch (metric) | X.±.012(0.30) X.X±.008(0.20) X.XX±.006(0.15) X.XXX±.004(0.10) | X.±5' .X'±2' .XX'±1' .XXX'±0.5' | CHECKED BY CHERRY | DATE 19/JUL/13 | TITLE SCSI Connector Pitch 1.27mm 90° Angle Female | | REV 0 |
| SCALE 5:1 | SIZE A4 | DRAWN BY KEVIN | | DATE 19/JUL/13 | THIS DRAWING CONTAINS INFORMATION THAT IS PROPRIETARY TO TXGA INDUSTRIAL ELECTRONICS(S.Z)CO.,LTD AND SHOULD NOT BE USED WITHOUT WRITTEN PERMISSION | | | |