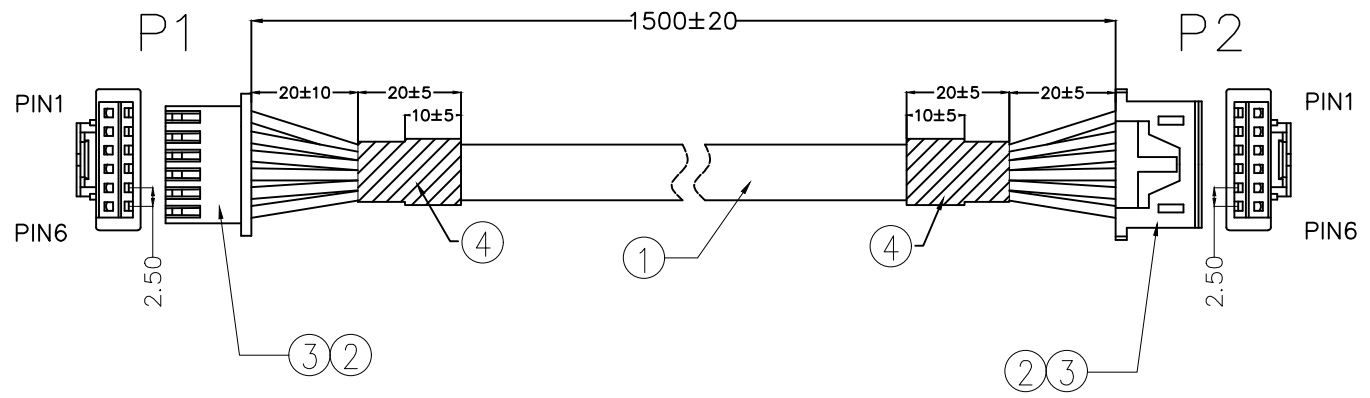


REV	LOCATIONS	DESCRIPTION	DATE	REVISER	APPD



PIN ASSIGNMENT

P1		P2
PIN1	Black	PIN1
PIN2	Brown	PIN2
PIN3	Red	PIN3
PIN4	White	PIN4
PIN5	Blue	PIN5
PIN6	Orange	PIN6

Electrical
 1. Withstanding Voltage: DC 300V
 2. Conduction impedance: 3Ω (MAX)
 3. Insulation Resistance: 10MΩ (MIN)
 Packing specification
 10pcs/Bundle, 10pcs/Bag

* Note: All Materials Meet The "RoHs" !

NO.	Specification
4	Black Heat Shrink Tube ø6mm:R-4HA-11
3	Wire to board terminal 1.25mm Female(Tin-Plated):T25001-F2H
2	Wire to board 2.5mm 6Circuits White :HG25006-S06M2W1B
1	UL2464 26AWG(7/0.16TS) 6C+AI+B(80%) Jacket Gray (Cool Gray 8U) OD=5.5mm

 THIRD ANGLE PROJECTION	GENERAL TOLERANCES (UNLESS SPECIFIED)		APPROVE BY	DATE	PART NO.	ITEM NO.	 Leader Of Industry
	X. ±0.30	X.* ±5'	FRANK	03/SEP/19	FCW002-000242	FCW002	
DESIGN UNITS Metric	X.X ±0.20	X.X' ±2'	CHECKED BY	DATE	TITLE		REV 0
SCALE 5:1	X.XX ±0.15	X.XX' ±1'	CHERRY	03/SEP/19	Multi-conductor cable		SHEET NO. 1/1
SIZE A4	X.XXX ±0.10	X.XXX' ±0.5'	DRAWN BY	DATE	THIS DRAWING CONTAINS INFORMATION THAT IS PROPRIETARY TO TXGA INDUSTRIAL ELECTRONICS(S.Z)CO.,LTD AND SHOULD NOT BE USED WITHOUT WRITTEN PERMISSION		
			Aubrey	03/SEP/19			