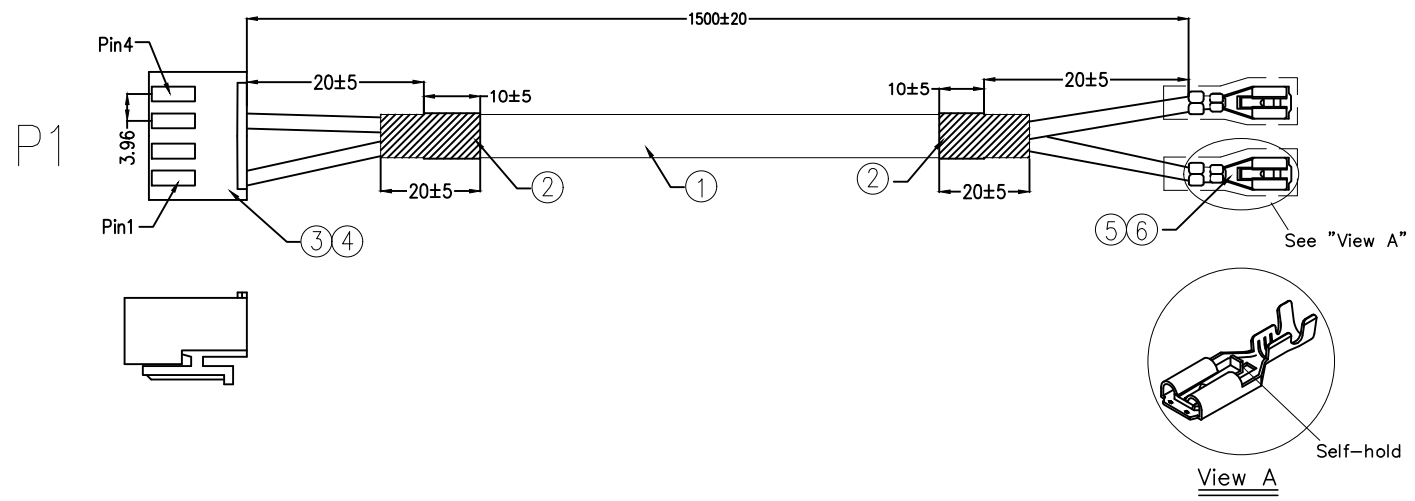


REV	LOCATIONS	DESCRIPTION	DATE	REVISER	APPD



* Note: All Materials Meet The "RoHs" !

Electrical
 1. Withstanding Voltage: DC 300V
 2. Conduction impedance: 3Ω (MAX)
 3. Insulation Resistance: 10MΩ (MIN)
 Packing specification
 10pcs/Bundle, 20pcs/Bag

6	Type 187 Sleeve (Transparent white): R18702-T1
5	Type 187 Terminal: T18709-F2B (Mates with male terminal: 4.75x0.8mm)
4	Wire to board terminal 3.96mm Female(Tin-Plated):T39601-F2H
3	Wire to board housing 3.96mm 4Circuits:HG39601-S04M2W1B
2	Black Heat Shrink Tube Ø8mm:R-4HA-52
1	UL2464 18AWG(34/0.18TS) 2C(Blue/Brown)+AL Jacket Gray (Cool Gray 8U) OD=7.50mm
NO.	Specification

PIN ASSIGNMENT

P1		
PIN1	Brown	Type 187 Terminal
PIN2		
PIN3	Bule	Type 187 Terminal
PIN4		

 THIRD ANGLE PROJECTION	GENERAL TOLERANCES (UNLESS SPECIFIED)		APPROVE BY	DATE	PART NO.	ITEM NO.	 Leader Of Industry
	X. ±0.30	X.* ±5°	FRANK	25/SEP/19	FCW002-000249	FCW002	
DESIGN UNITS Metric	X.X ±0.20	X.X* ±2°	CHECKED BY	DATE	TITLE		REV 0
SCALE 5:1	X.XX ±0.15	X.XX* ±1°	CHERRY	25/SEP/19	Multi-Conductor Cable		SHEET NO. 1/1
SIZE A4	X.XXX ±0.10	X.XXX* ±0.5°	DRAWN BY	DATE	THIS DRAWING CONTAINS INFORMATION THAT IS PROPRIETARY TO TXGA INDUSTRIAL ELECTRONICS(S,Z)CO.,LTD AND SHOULD NOT BE USED WITHOUT WRITTEN PERMISSION		
			Aubrey	25/SEP/19			