

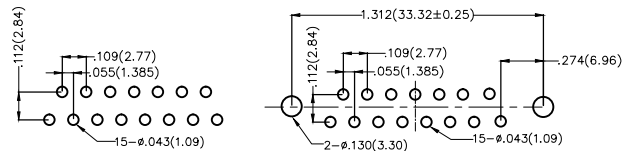
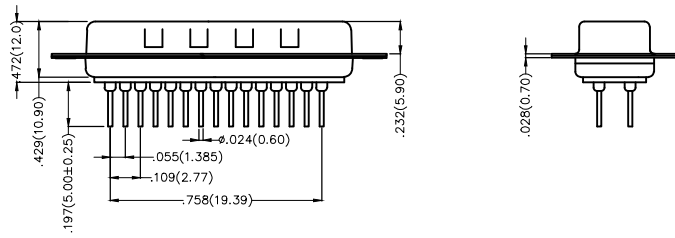
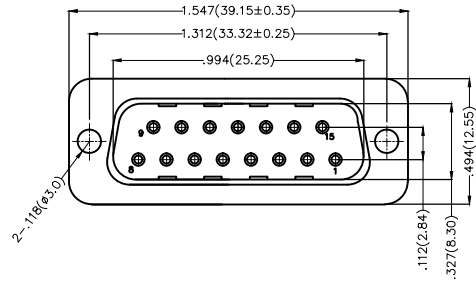
REV	LOCATIONS	DESCRIPTION	DATE	REVISER	APPD

Electrical

Current Rating: 3A AC(rms)/DC
Voltage Rating: 250V AC(rms)/DC
Contact Resistance: 25 mΩ Max
Insulation Resistance: 1000 MΩ MIN
Withstanding Voltage: 500V AC r.m.s
Temperature Range—Operating: -55°C~+105°C

Material and Plating

Housing: PBT(UL 94V-0)
Contact Pin: Phosphor Bronze
Plating: Gold Plated/Selective gold in contact area, tin on tail



A.B.E F.G.H
Recommended P.C.Board Layout

Ordering Information

FDB 15 05 — M0 D S X XX XX X A
1 2 3 4 5 6 7 8 9 10 11

1	Category FDB-D—SUB Connectors	2	Circuits 15—15Circuits	3	Distinction No. 05	4	Type M0—Male	5	Assembly Layout D—DIP	6	Entry Angle S—180° Vertical
7	Plating 1—Gold Plated 3—Selective gold in contact area, tin on tail	8	Thickness of Plating 00—Gold Flash 03—3μ Custom plate available	9	Color—Resin K6—Black U1—Blue	10	Packaging L—Tube K—Tray	11	Distinction Type A—A Type		

 THIRD ANGLE PROJECTION	GENERAL TOLERANCES (UNLESS SPECIFIED)		APPROVE BY FRANK	DATE 28/JUN/13	PART NO. FDB1505—MODSXXXXXXA	ITEM NO. FDB1505	 Leader Of Industry	
	DESIGN UNITS Inch (metric)	X.X±.012(0.30) X.XX±.008(0.20) X.XX±.006(0.15) X.XXX±.004(0.10)	X.±5° .X'±2° .XX'±1° .XXX'±0.5'	CHECKED BY JACOB	DATE 28/JUN/13	TITLE D—SUB Connectors 15 Circuits 180° Vertical Male		REV 0
SCALE 5:1	SIZE A4	DRAWN BY CHERRY		DATE 28/JUN/13	THIS DRAWING CONTAINS INFORMATION THAT IS PROPRIETARY TO TXGA INDUSTRIAL ELECTRONICS(S.Z.)CO.,LTD AND SHOULD NOT BE USED WITHOUT WRITTEN PERMISSION			

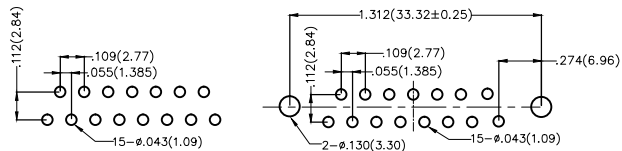
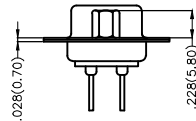
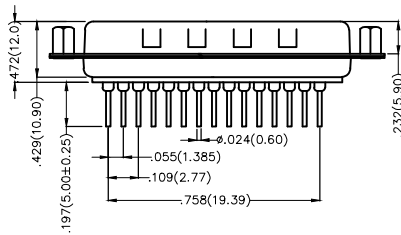
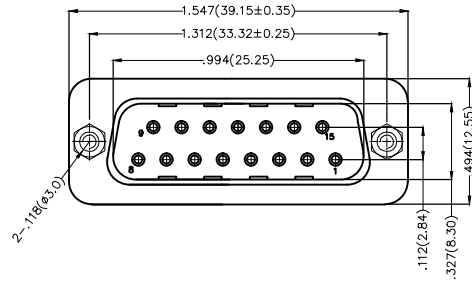
REV	LOCATIONS	DESCRIPTION	DATE	REVISER	APPD

Electrical

Current Rating: 3A AC(rms)/DC
Voltage Rating: 250V AC(rms)/DC
Contact Resistance: 25 mΩ Max
Insulation Resistance: 1000 MΩ MIN
Withstanding Voltage: 500V AC r.m.s
Temperature Range—Operating: -55°C~+105°C

Material and Plating

Housing: PBT(UL 94V-0)
Contact Pin: Phosphor Bronze
Plating: Gold Plated/Selective gold in contact area,tin on tail



A.B.E F.G.H
Recommended P.C.Board Layout

Ordering Information

FDB 15 05 — M0 D S X XX XX X B
1 2 3 4 5 6 7 8 9 10 11

1	Category FDB-D-SUB Connectors	2	Circuits 15-15Circuits	3	Distinction No. 05	4	Type M0-Male	5	Assembly Layout D-DIP	6	Entry Angle S-180° Vertical
7	Plating 1-Gold Plated 3-Selective gold in contact area, tin on tail	8	Thickness of Plating 00-Gold Flash 03-3μ Custom plate available	9	Color-Resin K6-Black U1-Blue	10	Packaging L-Tube K-Tray	11	Distinction Type B-B Type		

 THIRD ANGLE PROJECTION	GENERAL TOLERANCES (UNLESS SPECIFIED)		APPROVE BY FRANK	DATE 28/JUN/13	PART NO. FDB1505-MODSXXXXXXB	ITEM NO. FDB1505	 Leader Of Industry	
	DESIGN UNITS Inch (metric)	X.X±.012(0.30) X.XX±.008(0.20) X.XX±.006(0.15) X.XXX±.004(0.10)	X.±5° .X±2° .XX±1° .XXX±0.5°	CHECKED BY JACOB	DATE 28/JUN/13	TITLE D-SUB Connectors 15 Circuits 180° Vertical Male		REV 0
SCALE 5:1	SIZE A4	DRAWN BY CHERRY		DATE 28/JUN/13	THIS DRAWING CONTAINS INFORMATION THAT IS PROPRIETARY TO TXGA INDUSTRIAL ELECTRONICS(S.Z.)CO.,LTD AND SHOULD NOT BE USED WITHOUT WRITTEN PERMISSION			

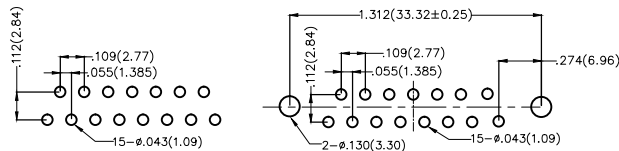
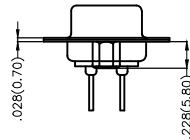
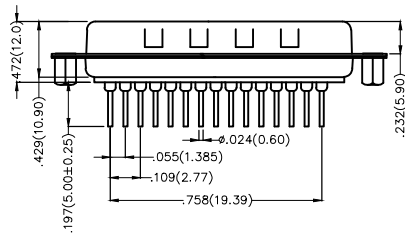
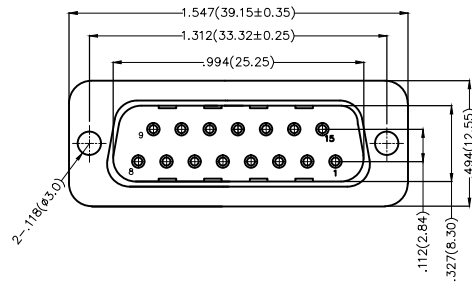
REV	LOCATIONS	DESCRIPTION	DATE	REVISER	APPD

Electrical

Current Rating: 3A AC(rms)/DC
Voltage Rating: 250V AC(rms)/DC
Contact Resistance: 25 mΩ Max
Insulation Resistance: 1000 MΩ MIN
Withstanding Voltage: 500V AC r.m.s
Temperature Range—Operating: -55°C~+105°C

Material and Plating

Housing: PBT(UL 94V-0)
Contact Pin: Phosphor Bronze
Plating: Gold Plated/Selective gold in contact area,tin on tail



A.B.E F.G.H
Recommended P.C.Board Layout

Ordering Information

FDB 15 05 — M0 D S X XX XX X E
1 2 3 4 5 6 7 8 9 10 11

1	Category FDB-D—SUB Connectors	2	Circuits 15—15Circuits	3	Distinction No. 05	4	Type M0—Male	5	Assembly Layout D—DIP	6	Entry Angle S—180° Vertical
7	Plating 1—Gold Plated 3—Selective gold in contact area, tin on tail	8	Thickness of Plating 00—Gold Flash 03—3μ" Custom plate available	9	Color—Resin K6—Black U1—Blue	10	Packaging L—Tube K—Tray	11	Distinction Type E—E Type		

 THIRD ANGLE PROJECTION	GENERAL TOLERANCES (UNLESS SPECIFIED)		APPROVE BY FRANK	DATE 28/JUN/13	PART NO. FDB1505—MODSXXXXXXE	ITEM NO. FDB1505	 Leader Of Industry	
	DESIGN UNITS Inch (metric)	X.X±.012(0.30) X.XX±.008(0.20) X.XX±.006(0.15) X.XXX±.004(0.10)	X.±5" .X±2" .XX±1" .XXX±0.5'	CHECKED BY JACOB	DATE 28/JUN/13	TITLE D—SUB Connectors 15 Circuits 180° Vertical Male		REV 0
SCALE 5:1	SIZE A4	DRAWN BY CHERRY		DATE 28/JUN/13	THIS DRAWING CONTAINS INFORMATION THAT IS PROPRIETARY TO TXGA INDUSTRIAL ELECTRONICS(S.Z.)CO.,LTD AND SHOULD NOT BE USED WITHOUT WRITTEN PERMISSION			

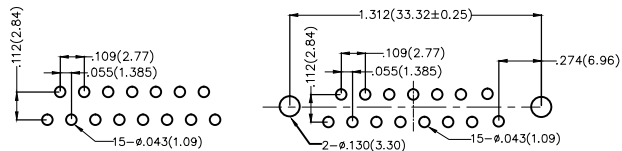
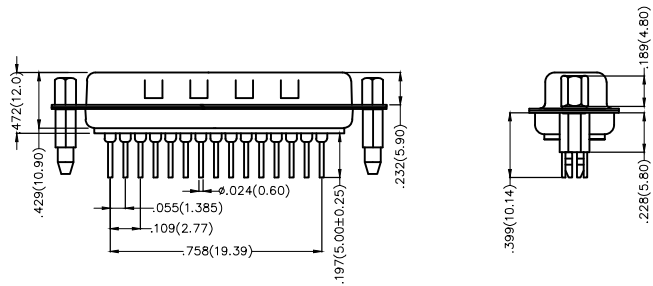
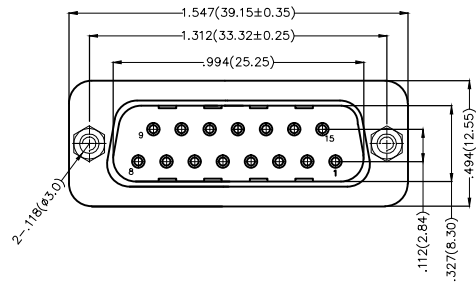
REV	LOCATIONS	DESCRIPTION	DATE	REVISER	APPD

Electrical

Current Rating: 3A AC(rms)/DC
Voltage Rating: 250V AC(rms)/DC
Contact Resistance: 25 m Ω Max
Insulation Resistance: 1000 M Ω MIN
Withstanding Voltage: 500V AC r.m.s
Temperature Range—Operating: -55°C~+105°C

Material and Plating

Housing: PBT(UL 94V-0)
Contact Pin: Phosphor Bronze
Plating: Gold Plated/Selective gold in contact area,tin on tail



A.B.E F.G.H
Recommended P.C.Board Layout

Ordering Information

FDB 15 05 — M0 D S X XX XX X F
1 2 3 4 5 6 7 8 9 10 11

1	Category FDB-D—SUB Connectors	2	Circuits 15—15Circuits	3	Distinction No. 05	4	Type M0—Male	5	Assembly Layout D—DIP	6	Entry Angle S—180° Vertical
7	Plating 1—Gold Plated 3—Selective gold in contact area, tin on tail	8	Thickness of Plating 00—Gold Flash 03—3μ Custom plate available	9	Color—Resin K6—Black U1—Blue	10	Packaging L—Tube K—Tray	11	Distinction Type F—F Type		

 THIRD ANGLE PROJECTION	GENERAL TOLERANCES (UNLESS SPECIFIED)		APPROVE BY FRANK	DATE 28/JUN/13	PART NO. FDB1505—MODSXXXXXXF	ITEM NO. FDB1505	 Leader Of Industry
	X.±.012(0.30)	X.±5'	CHECKED BY JACOB	DATE 28/JUN/13	TITLE D—SUB Connectors 15 Circuits 180° Vertical Male		
DESIGN UNITS Inch (metric)	X.XX±.008(0.20)	.X'±2'	DRAWN BY CHERRY	DATE 28/JUN/13	THIS DRAWING CONTAINS INFORMATION THAT IS PROPRIETARY TO TXGA INDUSTRIAL ELECTRONICS(S.Z)CO.,LTD AND SHOULD NOT BE USED WITHOUT WRITTEN PERMISSION		
SCALE 5:1	SIZE A4	X.XX±.006(0.15)	.XX'±1'				
		X.XXX±.004(0.10)	.XXX'±0.5'				

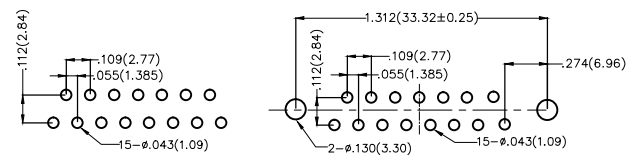
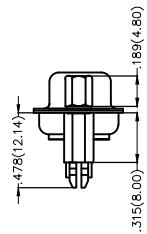
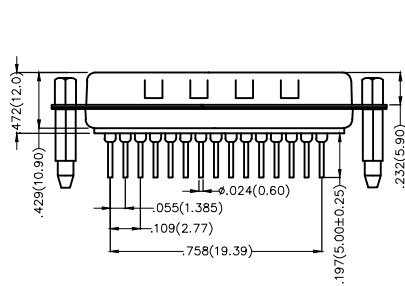
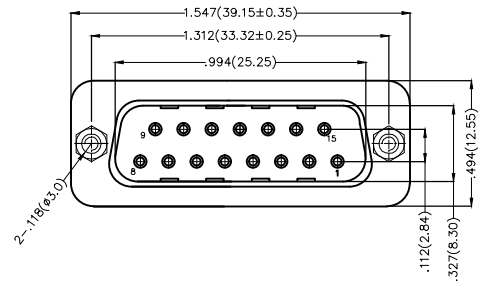
REV	LOCATIONS	DESCRIPTION	DATE	REVISER	APPD

Electrical

Current Rating: 3A AC(rms)/DC
Voltage Rating: 250V AC(rms)/DC
Contact Resistance: 25 m Ω Max
Insulation Resistance: 1000 M Ω MIN
Withstanding Voltage: 500V AC r.m.s
Temperature Range—Operating: -55°C~+105°C

Material and Plating

Housing: PBT(UL 94V-0)
Contact Pin: Phosphor Bronze
Plating: Gold Plated/Selective gold in contact area, tin on tail



A.B.E F.G.H
Recommended P.C.Board Layout

Ordering Information

FDB 15 05 — M0 D S X XX XX X G
1 2 3 4 5 6 7 8 9 10 11

1	Category FDB-D—SUB Connectors	2	Circuits 15—15Circuits	3	Distinction No. 05	4	Type M0—Male	5	Assembly Layout D—DIP	6	Entry Angle S—180° Vertical
7	Plating 1—Gold Plated 3—Selective gold in contact area, tin on tail	8	Thickness of Plating 00—Gold Flash 03—3μ Custom plate available	9	Color—Resin K6—Black U1—Blue	10	Packaging L—Tube K—Tray	11	Distinction Type G—G Type		

 THIRD ANGLE PROJECTION	GENERAL TOLERANCES (UNLESS SPECIFIED)		APPROVE BY FRANK	DATE 28/JUN/13	PART NO. FDB1505—MODSXXXXXXG	ITEM NO. FDB1505	 Leader Of Industry	
	DESIGN UNITS Inch (metric)	X.±.012(0.30) X.X±.008(0.20) X.XX±.006(0.15) X.XXX±.004(0.10)	X.±5° .X±2° .XX±1° .XXX±0.5°	CHECKED BY JACOB	DATE 28/JUN/13	TITLE D—SUB Connectors 15 Circuits 180° Vertical Male		REV 0
SCALE 5:1	SIZE A4	DRAWN BY CHERRY		DATE 28/JUN/13	THIS DRAWING CONTAINS INFORMATION THAT IS PROPRIETARY TO TXGA INDUSTRIAL ELECTRONICS(S.Z.)CO.,LTD AND SHOULD NOT BE USED WITHOUT WRITTEN PERMISSION			

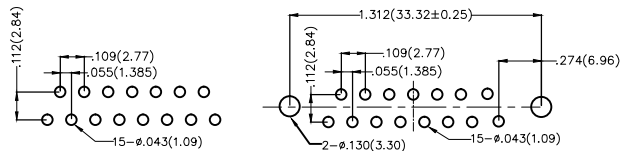
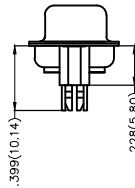
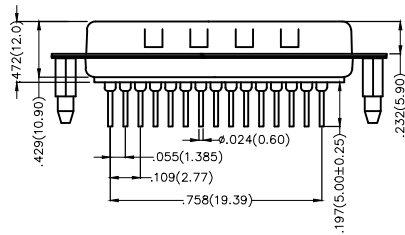
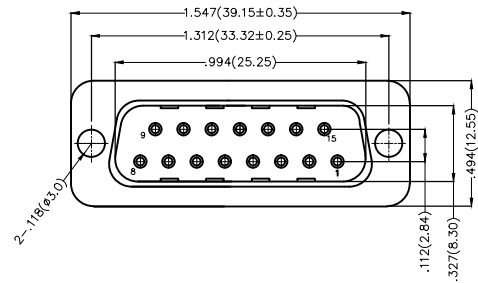
REV	LOCATIONS	DESCRIPTION	DATE	REVISER	APPD

Electrical

Current Rating: 3A AC(rms)/DC
Voltage Rating: 250V AC(rms)/DC
Contact Resistance: 25 m Ω Max
Insulation Resistance: 1000 M Ω MIN
Withstanding Voltage: 500V AC r.m.s
Temperature Range—Operating: -55°C~+105°C

Material and Plating

Housing: PBT(UL 94V-0)
Contact Pin: Phosphor Bronze
Plating: Gold Plated/Selective gold in contact area,tin on tail




A.B.E F.G.H
Recommended P.C.Board Layout

Ordering Information

FDB 15 05 — M0 D S X XX XX X H
1 2 3 4 5 6 7 8 9 10 11

1	Category FDB-D-SUB Connectors	2	Circuits 15-15Circuits	3	Distinction No. 05	4	Type M0-Male	5	Assembly Layout D-DIP	6	Entry Angle S-180° Vertical
7	Plating 1-Gold Plated 3-Selective gold in contact area, tin on tail	8	Thickness of Plating 00-Gold Flash 03-3µ" Custom plate available	9	Color-Resin K6-Black U1-Blue	10	Packaging L-Tube K-Tray	11	Distinction Type H-H Type		

THIRD ANGLE PROJECTION	GENERAL TOLERANCES (UNLESS SPECIFIED)		APPROVE BY FRANK	DATE 28/JUN/13	PART NO. FDB1505-MODSXXXXXXH	ITEM NO. FDB1505	 Leader Of Industry
	DESIGN UNITS Inch (metric)	X.±.012(0.30) X.±5' X.X±.008(0.20) .X±2' X.XX±.006(0.15) .XX±1' X.XXX±.004(0.10) .XXX±0.5'	CHECKED BY JACOB	DATE 28/JUN/13	TITLE D-SUB Connectors 15 Circuits 180° Vertical Male		
SCALE 5:1	SIZE A4	DRAWN BY CHERRY		DATE 28/JUN/13	THIS DRAWING CONTAINS INFORMATION THAT IS PROPRIETARY TO TXGA INDUSTRIAL ELECTRONICS(S.Z.)CO.,LTD AND SHOULD NOT BE USED WITHOUT WRITTEN PERMISSION		