

REV	LOCATIONS	DESCRIPTION	DATE	REVISED	APPD

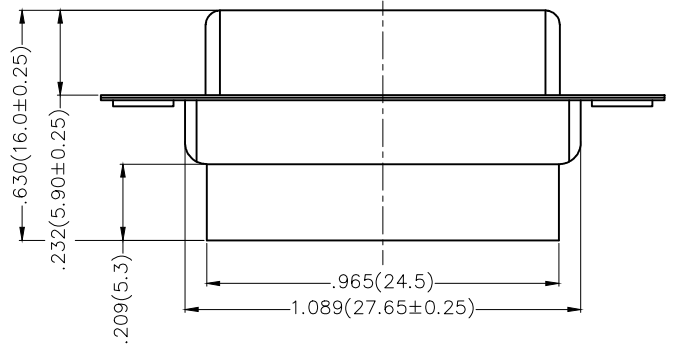
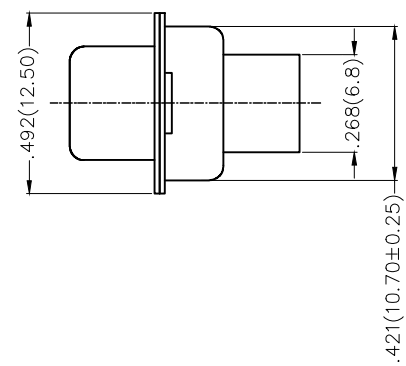
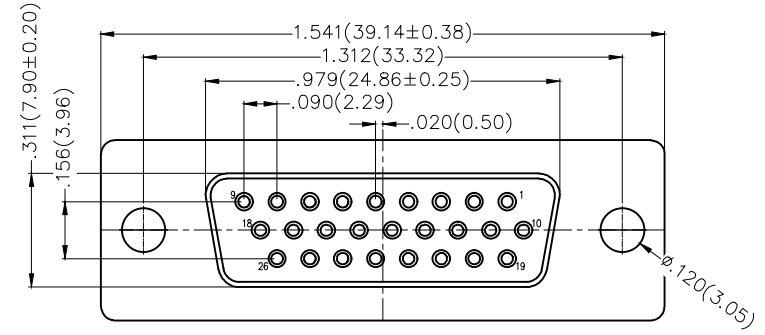
SPECIFICATIONS

Electrical

Current Rating: 3A AC(rms)/DC
Voltage Rating: 250V AC(rms)/DC
Contact Resistance: 30 mΩ Max
Insulation Resistance: 1000 MΩ MIN
Withstanding Voltage: 500V AC r.m.s
Temperature Range—Operating: -55°C~+105°C

Material and Plating

Housing: PBT (UL 94V-0)
Front Shell: Spcc/ Nickel plated
Back Shell: Spcc/ Tin plated



Ordering Information

FDB 26 37 - F0 T S 0 00 XX K A
1 2 3 4 5 6 7 8 9

1	Category FDB- D-SUB	2	Circuits 26	3	Distinction No. 37	4	Type F0-Female	5	Assembly Layout T-Terminal type
6	Entry Angle S-180° Vertical	7	Color-Resin K6-Black U1-Blue	8	Packaging K-Tray	9	Distinction Type A-A Type		

 THIRD ANGLE PROJECTION	GENERAL TOLERANCES (UNLESS SPECIFIED)		APPROVE BY FRANK	DATE 28/DEC/18	PART NO. FDB2637-FOTS000XXKA	ITEM NO. FDB2637	 Leader Of Industry
	DESIGN UNITS Inch (metric)	X.±.012(0.30)	X.±5'	CHECKED BY CHERRY	DATE 28/DEC/18	TITLE D-SUB Connector 26Circuits Terminal type Female	
SCALE 5:1	SIZE A4	X.XX±.008(0.20)	.X'±2'	DRAWN BY KATE	DATE 28/DEC/18	THIS DRAWING CONTAINS INFORMATION THAT IS PROPRIETARY TO TXGA INDUSTRIAL ELECTRONICS(S.Z)CO.,LTD AND SHOULD NOT BE USED WITHOUT WRITTEN PERMISSION	
		X.XX±.006(0.15)	.XX'±1'			REV 0	SHEET NO. 1/1
		X.XXX±.004(0.10)	.XXX'±0.5'				

REV	LOCATIONS	DESCRIPTION	DATE	REVISED	APPD

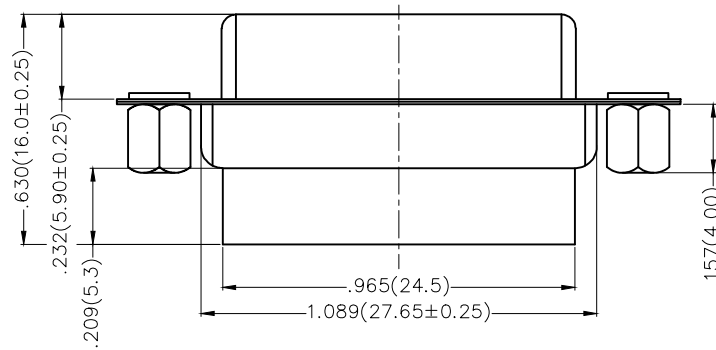
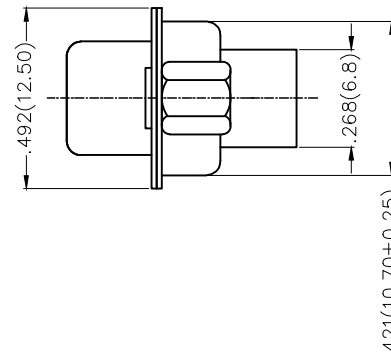
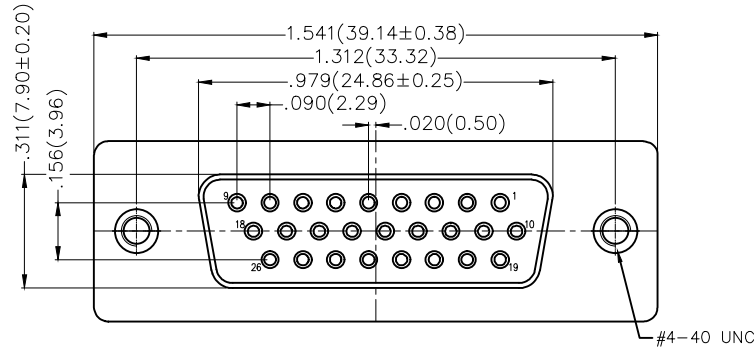
SPECIFICATIONS

Electrical

Current Rating: 3A AC(rms)/DC
Voltage Rating: 250V AC(rms)/DC
Contact Resistance: 30 mΩ Max
Insulation Resistance: 1000 MΩ MIN
Withstanding Voltage: 500V AC r.m.s
Temperature Range—Operating: -55°C~+105°C

Material and Plating

Housing: PBT (UL 94V-0)
Front Shell: Spcc/ Nickel plated
Back Shell: Spcc/ Tin plated
Nut: Copper alloy/ Nickel plated



Ordering Information

FDB 26 37 - FO T S 0 00 XX K B
1 2 3 4 5 6 7 8 9

1 Category FDB- D-SUB	2 Circuits 26	3 Distinction No. 37	4 Type FO-Female	5 Assembly Layout T-Terminal type
6 Entry Angle S-180° Vertical	7 Color-Resin K6-Black U1-Blue	8 Packaging K-Tray	9 Distinction Type B-B Type	

 THIRD ANGLE PROJECTION	GENERAL TOLERANCES (UNLESS SPECIFIED)		APPROVE BY FRANK	DATE 28/DEC/18	PART NO. FDB2637-FOTS000XXKB	ITEM NO. FDB2637	 Leader Of Industry
	DESIGN UNITS Inch (metric)	X.±.012(0.30)	X.±5'	CHECKED BY CHERRY	DATE 28/DEC/18	TITLE D-SUB Connector 26Circuits Terminal type Female	
SCALE 5:1	SIZE A4	X.XX±.006(0.15)	.XX±1'	DRAWN BY KATE	DATE 28/DEC/18	THIS DRAWING CONTAINS INFORMATION THAT IS PROPRIETARY TO TXGA INDUSTRIAL ELECTRONICS(S.Z)CO.,LTD AND SHOULD NOT BE USED WITHOUT WRITTEN PERMISSION	

REV 0 SHEET NO. 1/1

REV	LOCATIONS	DESCRIPTION	DATE	REVISED	APPD

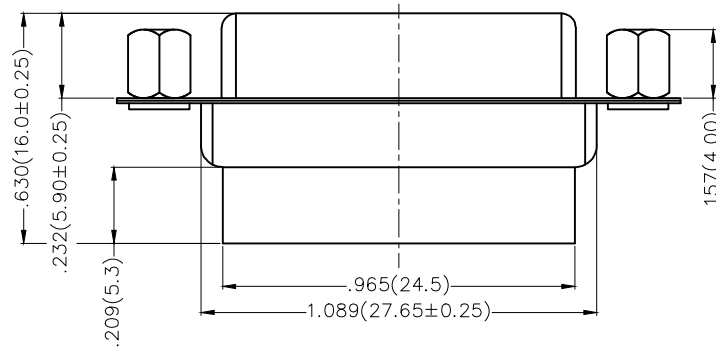
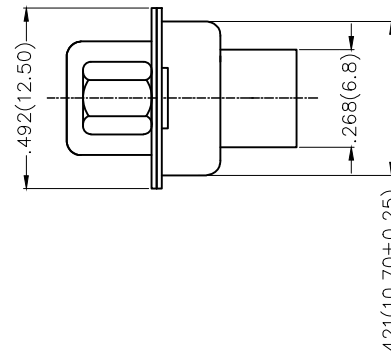
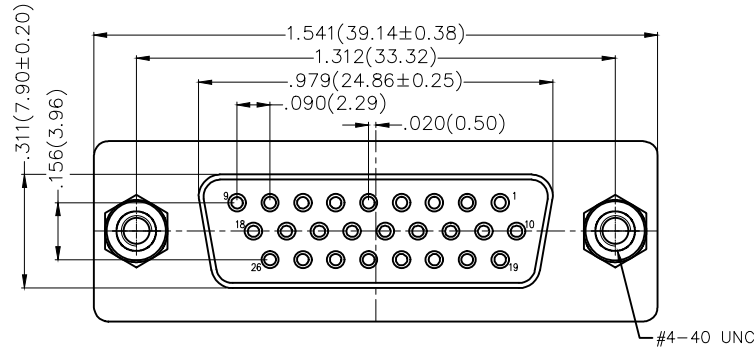
SPECIFICATIONS

Electrical

Current Rating: 3A AC(rms)/DC
Voltage Rating: 250V AC(rms)/DC
Contact Resistance: 30 mΩ Max
Insulation Resistance: 1000 MΩ MIN
Withstanding Voltage: 500V AC r.m.s
Temperature Range—Operating: -55°C~+105°C

Material and Plating

Housing: PBT (UL 94V-0)
Front Shell: Spcc/ Nickel plated
Back Shell: Spcc/ Tin plated
Nut: Copper alloy/ Nickel plated



Ordering Information

FDB 26 37 - F0 T S 0 00 XX K C
1 2 3 4 5 6 7 8 9

1 Category FDB- D-SUB	2 Circuits 26	3 Distinction No. 37	4 Type F0-Female	5 Assembly Layout T-Terminal type
6 Entry Angle S-180° Vertical	7 Color-Resin K6-Black U1-Blue	8 Packaging K-Tray	9 Distinction Type C-C Type	

 THIRD ANGLE PROJECTION	GENERAL TOLERANCES (UNLESS SPECIFIED)		APPROVE BY FRANK	DATE 28/DEC/18	PART NO. FDB2637-FOTS000XXKC	ITEM NO. FDB2637	 Leader Of Industry
	DESIGN UNITS Inch (metric)	X.±.012(0.30)	X.±5'	CHECKED BY CHERRY	DATE 28/DEC/18	TITLE D-SUB Connector 26Circuits Terminal type Female	
SCALE 5:1	SIZE A4	X.XX±.008(0.20)	.X'±2'	DRAWN BY KATE	DATE 28/DEC/18	THIS DRAWING CONTAINS INFORMATION THAT IS PROPRIETARY TO TXGA INDUSTRIAL ELECTRONICS(S.Z)CO.,LTD AND SHOULD NOT BE USED WITHOUT WRITTEN PERMISSION	
		X.XX±.006(0.15)	.XX±1'			REV 0	SHEET NO. 1/1
		X.XXX±.004(0.10)	.XXX±0.5'				