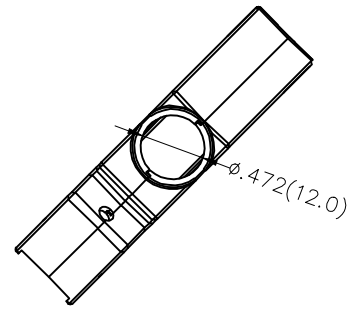
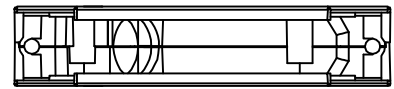
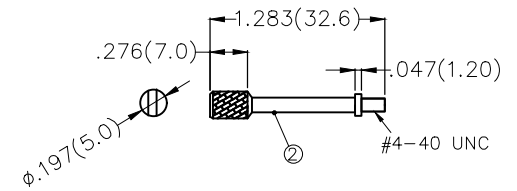
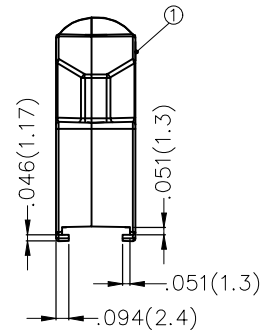
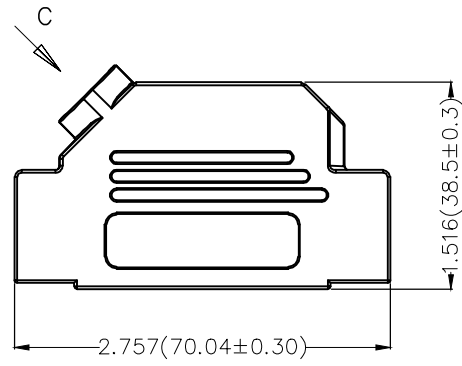
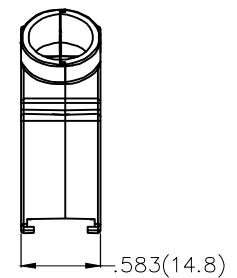
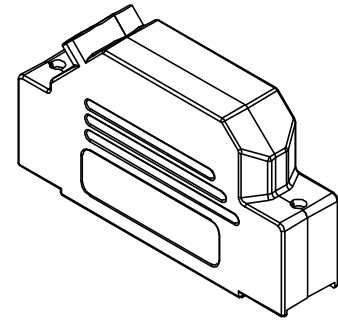
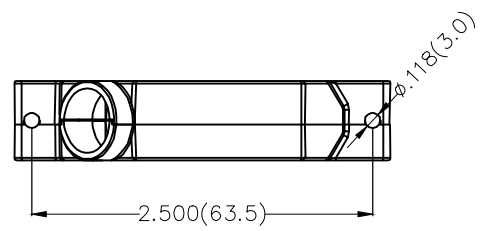
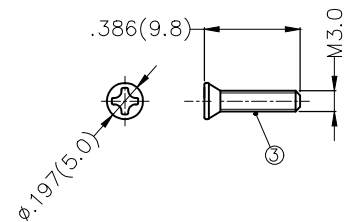


REV	LOCATIONS	DESCRIPTION	DATE	REVSER	APPD



View from "C"



BOM LIST			
Item	Part name	Q'ty	Notes
①	Metal hood	2	Zinc alloy/ Ni plated
②	Long screw	2	#4-40 UNC, Steel/ Ni plated
③	Screw for hood	2	M3.0, Steel/ Ni plated

<p>THIRD ANGLE PROJECTION</p>	GENERAL TOLERANCES (UNLESS SPECIFIED)		APPROVE BY	DATE	PART NO.	ITEM NO.	<p>Leader Of Industry</p>
	X.±.012(0.30)	X.±5'	FRANK	12/OCT/19	FDB3703-C200B	FDB3703-C	
	X.X±.008(0.20)	.X±2'	CHECKED BY	DATE	TITLE		REV 0
	X.XX±.006(0.15)	.XX±1'	CHERRY	12/OCT/19	D-SUB Connectors 37 Circuits Cover		SHEET NO. 1/1
SCALE	SIZE	X.XXX±.004(0.10)	.XXX±0.5'	DRAWN BY	DATE	THIS DRAWING CONTAINS INFORMATION THAT IS PROPRIETARY TO TXGA INDUSTRIAL ELECTRONICS(S.Z)CO.,LTD AND SHOULD NOT BE USED WITHOUT WRITTEN PERMISSION	
5:1	A4			KATE	12/OCT/19		