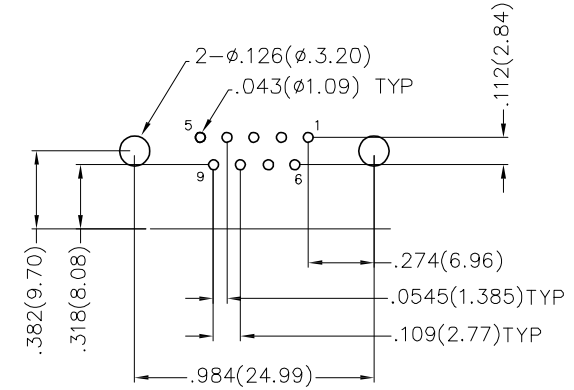
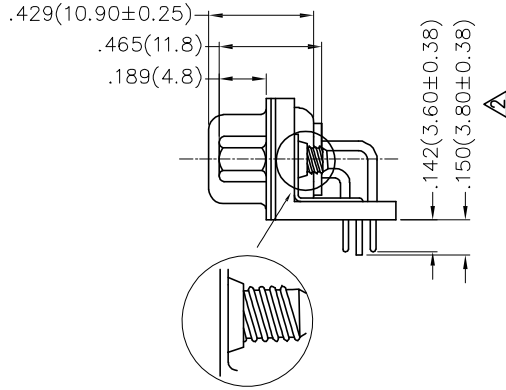
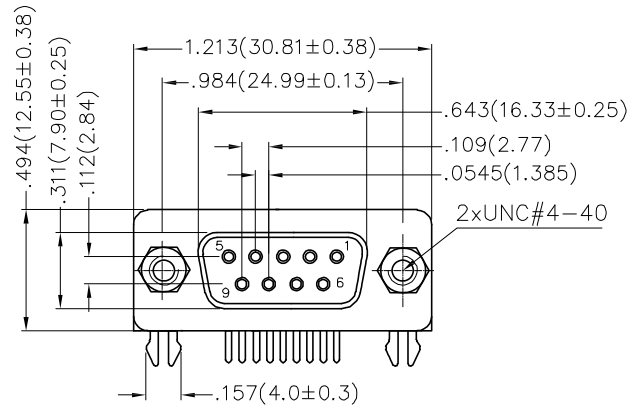
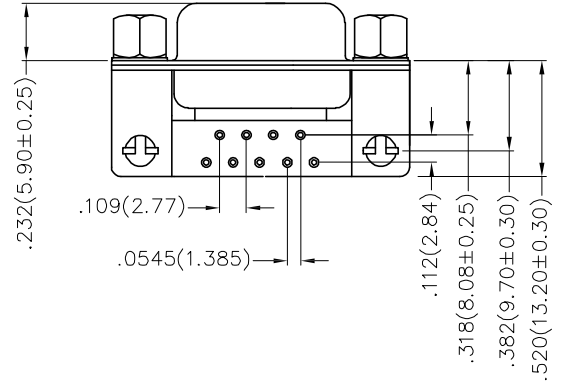


REV	LOCATIONS	DESCRIPTION	DATE	REVISER	APPD
1	△	Size 3.30 Change to 3.8±0.35	04/AUG/20	CHERRY	KATE
2	△	Size: Change 4.20/3.80 into 3.80/3.60	26/SEP/21	KATE	FRANK



Recommended P.C.Board Layout




Ordering Information

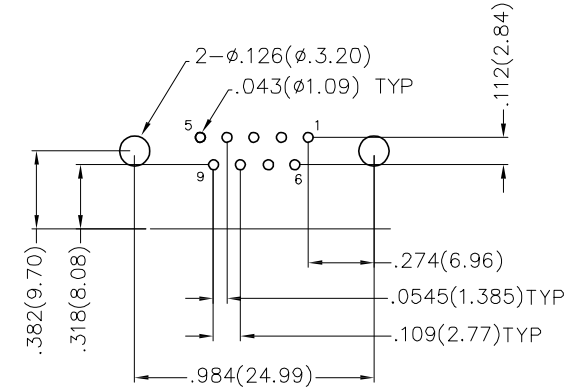
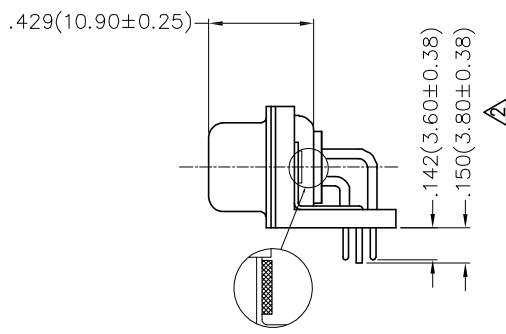
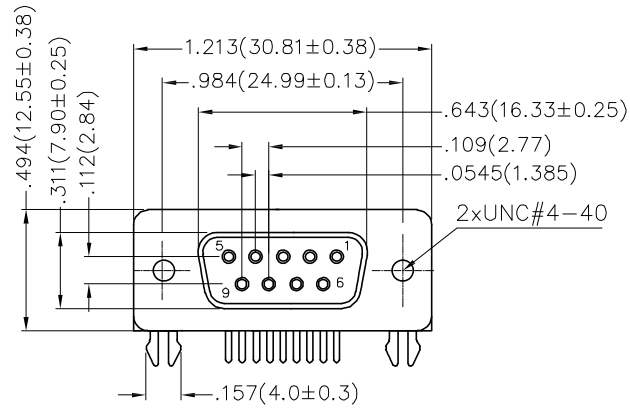
FDM 09 01 - FO D B 1 XX XX X  
 1 2 3 4 5 6 7 8 9 10

1   Category FDM-Machined pin D-SUB connector	2   Circuits 09	3   Distinction No. 01	4   Type FO-Female	5   Assembly Layout D-DIP	6   Entry Angle B-90° Angle
7   Plating 1-Gold Plated	8   Thickness of Plating 01-1µ" 03-3µ" Custom plate available	9   Color-Resin W1-White K6-Black	10   Packaging K-Tray L-Tube		

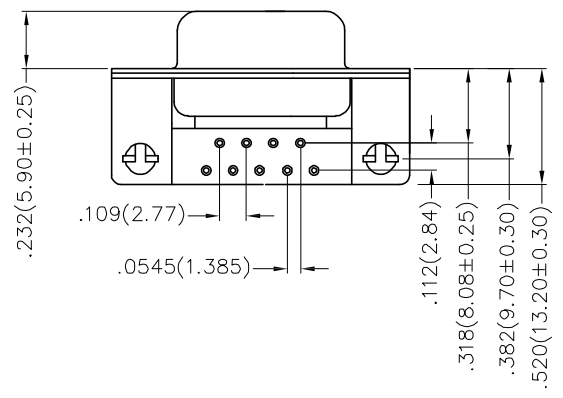
**Materials And Finish**  
 Shell: Spcc Material, Front Nickel Plated 80µ" Min  
 Back Shell Tin Plated 100µ" Min  
 Insulator: Glass Filled Thermoplastic, UL 94V-0  
 Contact Material: Brass /Gold Plated  
**Electrical Characteristic**  
 Current Rating: 7.5A  
 Voltage Rating: 300V  
 Contact Resistance: 5mΩ Max  
 Dielectric Withstanding Voltage :1000V AC r.m.s  
 Insulation Resistance: 5000 MΩ Min.  
 Temperature Range-Operating: -55°C ~ +105°C

THIRD ANGLE PROJECTION	GENERAL TOLERANCES (UNLESS SPECIFIED)		APPROVE BY FRANK	DATE 28/JUN/13	PART NO. FDM0901-F0DB1XXXXX	ITEM NO. FDM0901	 Leader Of Industry
	X.±.012(0.30)	X:±5°	CHECKED BY JACOB	DATE 28/JUN/13	TITLE Machined pin D-SUB connector 90° Angle Female		
DESIGN UNITS Inch (metric)	X.XX±.008(0.20)	.X'±2'	DRAWN BY CHERRY	DATE 28/JUN/13	THIS DRAWING CONTAINS INFORMATION THAT IS PROPRIETARY TO TXGA INDUSTRIAL ELECTRONICS(S.Z)CO.,LTD AND SHOULD NOT BE USED WITHOUT WRITTEN PERMISSION		REV 2   SHEET NO. 1/1
SCALE 5:1	SIZE A4	X.XX±.006(0.15)					
		X.XXX±.004(0.10)					

REV	LOCATIONS	DESCRIPTION	DATE	REVISER	APPD
1	△	Size 3.30 Change to 3.8±0.35	04/AUG/20	CHERRY	KATE
2	△	Size: Change 4.20/3.80 into 3.80/3.60	26/SEP/21	KATE	FRANK



Recommended P.C.Board Layout




### Ordering Information

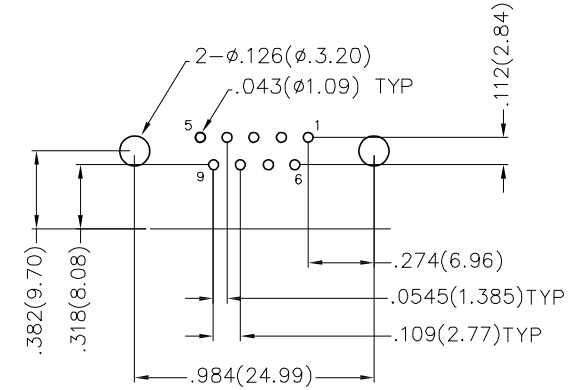
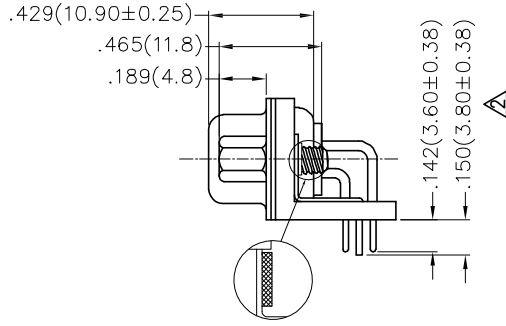
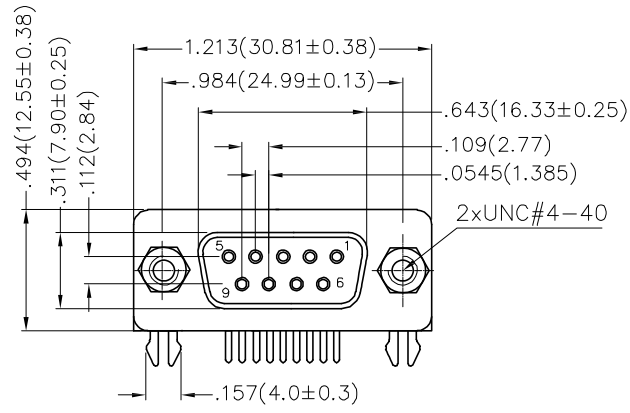
FDM 09 01 — FO D B 1 XX XX X B  
 1 2 3 4 5 6 7 8 9 10 11

1   Category FDM—Machined pin D—SUB connector	2   Circuits 09	3   Distinction No. 01	4   Type FO—Female	5   Assembly Layout D—DIP	6   Entry Angle B—90° Angle
7   Plating 1—Gold Plated	8   Thickness of Plating 01—1μ" 03—3μ" Custom plate available	9   Color—Resin W1—White K6—Black	10   Packaging K—Tray L—Tube	11   Distinction Type B—B Type	

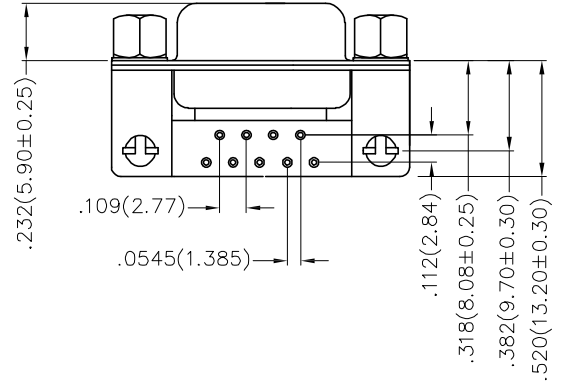
**Materials And Finish**  
 Shell: Spcc Material, Front Nickel Plated 80μ" Min  
 Back Shell Tin Plated 100μ" Min  
 Insulator: Glass Filled Thermoplastic, UL 94V-0  
 Contact Material: Brass /Gold Plated  
**Electrical Characteristic**  
 Current Rating: 7.5A  
 Voltage Rating: 300V  
 Contact Resistance: 5mΩ Max  
 Dielectric Withstanding Voltage :1000V AC r.m.s  
 Insulation Resistance: 5000 MΩ Min.  
 Temperature Range—Operating: -55°C ~ +105°C

THIRD ANGLE PROJECTION	GENERAL TOLERANCES (UNLESS SPECIFIED)		APPROVE BY FRANK	DATE 28/JUN/13	PART NO. FDM0901-F0DB1XXXXXB	ITEM NO. FDM0901	 Leader Of Industry
	X.±.012(0.30)	X:±5'	CHECKED BY JACOB	DATE 28/JUN/13	TITLE Machined pin D—SUB connector 90° Angle Female	REV 2	
DESIGN UNITS Inch (metric)	X.X±.008(0.20)	.X'±2'	DRAWN BY CHERRY	DATE 28/JUN/13	THIS DRAWING CONTAINS INFORMATION THAT IS PROPRIETARY TO TXGA INDUSTRIAL ELECTRONICS(S.Z)CO.,LTD AND SHOULD NOT BE USED WITHOUT WRITTEN PERMISSION		
SCALE 5:1	SIZE A4	X.XX±.006(0.15)					
		X.XX±.004(0.10)					

REV	LOCATIONS	DESCRIPTION	DATE	REVISER	APPD
1	△	Size 3.30 Change to 3.8±0.35	04/AUG/20	CHERRY	KATE
2	△	Size: Change 4.20/3.80 into 3.80/3.60	26/SEP/21	KATE	FRANK



Recommended P.C.Board Layout




Ordering Information

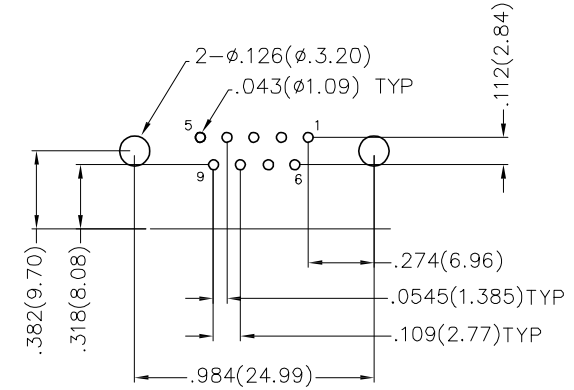
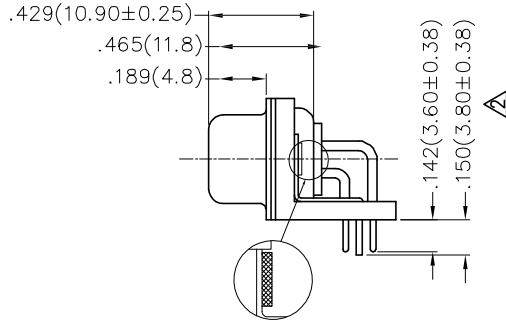
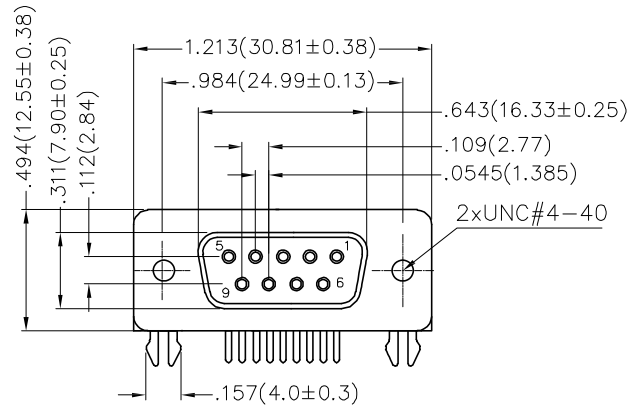
FDM 09 01 - FO D B 1 XX XX X C  
 1 2 3 4 5 6 7 8 9 10 11

1   Category FDM-Machined pin D-SUB connector	2   Circuits 09	3   Distinction No. 01	4   Type FO-Female	5   Assembly Layout D-DIP	6   Entry Angle B-90° Angle
7   Plating 1-Gold Plated	8   Thickness of Plating 01-1μ" 03-3μ" Custom plate available	9   Color-Resin W1-White K6-Black	10   Packaging K-Tray L-Tube	11   Distinction Type C-C Type	

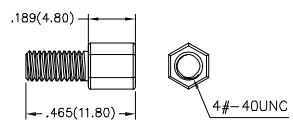
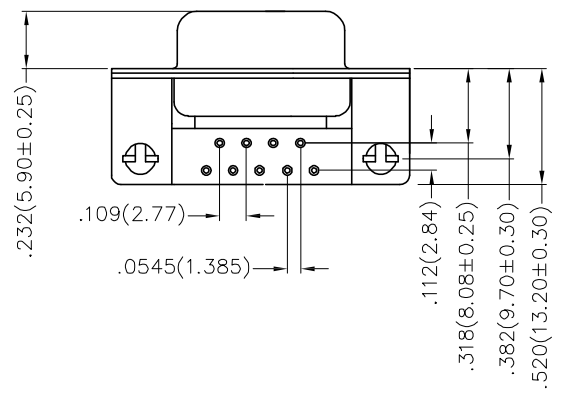
**Materials And Finish**  
 Shell: Spcc Material, Front Nickel Plated 80μ" Min  
 Back Shell Tin Plated 100μ" Min  
 Insulator: Glass Filled Thermoplastic, UL 94V-0  
 Contact Material: Brass /Gold Plated  
**Electrical Characteristic**  
 Current Rating: 7.5A  
 Voltage Rating: 300V  
 Contact Resistance: 5mΩ Max  
 Dielectric Withstanding Voltage :1000V AC r.m.s  
 Insulation Resistance: 5000 MΩ Min.  
 Temperature Range-Operating: -55°C ~ +105°C

THIRD ANGLE PROJECTION	GENERAL TOLERANCES (UNLESS SPECIFIED)		APPROVE BY FRANK	DATE 28/JUN/13	PART NO. FDM0901-F0DB1XXXXXC	ITEM NO. FDM0901	 Leader Of Industry
	DESIGN UNITS Inch (metric)	X.±.012(0.30) X.X±.008(0.20) X.XX±.006(0.15) X.XXX±.004(0.10)	X:±5° .X'±2'	CHECKED BY JACOB	DATE 28/JUN/13	TITLE Machined pin D-SUB connector 90° Angle Female	
SCALE 5:1	SIZE A4	X.XX±.006(0.15) X.XXX±.004(0.10)	DRAWN BY CHERRY	DATE 28/JUN/13	THIS DRAWING CONTAINS INFORMATION THAT IS PROPRIETARY TO TXGA INDUSTRIAL ELECTRONICS(S.Z)CO.,LTD AND SHOULD NOT BE USED WITHOUT WRITTEN PERMISSION		

REV	LOCATIONS	DESCRIPTION	DATE	REVISER	APPD
1	△	Size 3.30 Change to 3.8±0.35	04/AUG/20	CHERRY	KATE
2	△	Size: Change 4.20/3.80 into 3.80/3.60	26/SEP/21	KATE	FRANK



Recommended P.C.Board Layout




Screw (2pcs)

Ordering Information

FDM 09 01 - FO D B 1 XX XX X D  
 1 2 3 4 5 6 7 8 9 10 11

1	Category FDM-Machined pin D-SUB connector	2	Circuits 09	3	Distinction No. 01	4	Type FO-Female	5	Assembly Layout D-DIP	6	Entry Angle B-90° Angle
7	Plating 1-Gold Plated	8	Thickness of Plating 01-1μ" 03-3μ" Custom plate available	9	Color-Resin W1-White K6-Black	10	Packaging K-Tray L-Tube	11	Distinction Type D-D Type		

Materials And Finish  
 Shell: Spcc Material, Front Nickel Plated 80μ" Min  
 Back Shell Tin Plated 100μ" Min  
 Insulator: Glass Filled Thermoplastic, UL 94V-0  
 Contact Material: Brass /Gold Plated  
 Electrical Characteristic  
 Current Rating: 7.5A  
 Voltage Rating: 300V  
 Contact Resistance: 5mΩ Max  
 Dielectric Withstanding Voltage :1000V AC r.m.s  
 Insulation Resistance: 5000 MΩ Min.  
 Temperature Range-Operating: -55°C ~ +105°C

THIRD ANGLE PROJECTION	GENERAL TOLERANCES (UNLESS SPECIFIED)		APPROVE BY FRANK	DATE 28/JUN/13	PART NO. FDM0901-F0DB1XXXXXD	ITEM NO. FDM0901	 Leader Of Industry
	X.±.012(0.30)	X.±5'	CHECKED BY JACOB	DATE 28/JUN/13	TITLE Machined pin D-SUB connector 90° Angle Female	REV 2	
DESIGN UNITS Inch (metric)	X.XX±.008(0.20)	.X'±2'	DRAWN BY CHERRY	DATE 28/JUN/13	THIS DRAWING CONTAINS INFORMATION THAT IS PROPRIETARY TO TXGA INDUSTRIAL ELECTRONICS(S.Z)CO.,LTD AND SHOULD NOT BE USED WITHOUT WRITTEN PERMISSION		
SCALE 5:1	SIZE A4	X.XX±.006(0.15)					
		X.XX±.004(0.10)					