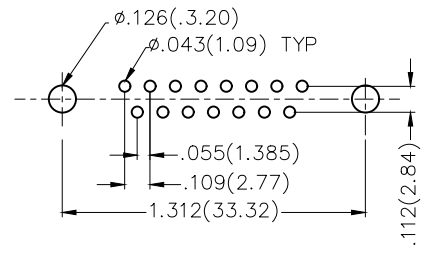
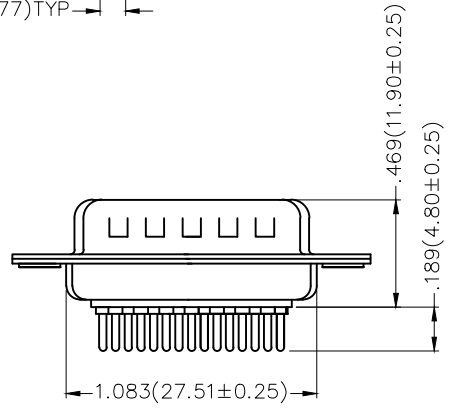
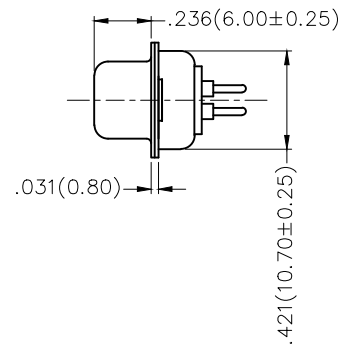
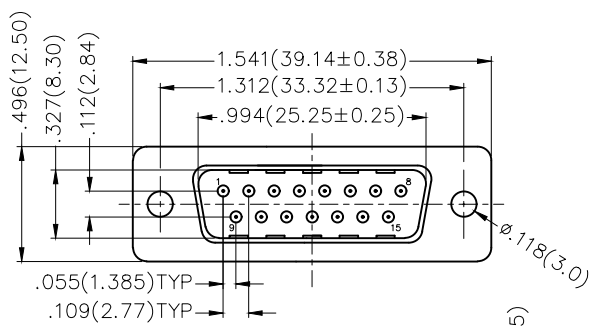


REV	LOCATIONS	DESCRIPTION	DATE	REVISED	APPD



Recommended P.C.Board Layout

Ordering Information

FDM 15 05 — MO D S 1 XX XX X
 1 2 3 4 5 6 7 8 9 10

1 Category	2 Circuits	3 Distinction No.	4 Type	5 Assembly Layout
FDM—Machined pin D—SUB connector	15	05	MO—Male	D—DIP
6 Entry Angle	7 Plating	8 Thickness of Plating	9 Color—Resin	10 Packaging
S—180° Vertical	1—Gold Plated	01—1µ" 03—3µ" Custom plate available	W1—White K6—Black	K—Tray L—Tube

Materials And Finish
 Shell: Spcc Material, Front Nickel Plated 80µ" Min
 Back Shell: SPCC, Tin Plated 100µ" Min
 Insulator: Glass Filled Thermoplastic, UL 94V-0
 Contact Material: Brass /Gold Plated
Electrical Characteristic
 Current Rating: 7.5A
 Voltage Rating: 300V
 Contact Resistance: 5mΩ Max
 Dielectric Withstanding Voltage :1000V AC r.m.s
 Insulation Resistance: 5000 MΩ Min.
 Temperature Range—Operating: -55°C ~ +105°C

 THIRD ANGLE PROJECTION	GENERAL TOLERANCES (UNLESS SPECIFIED)		APPROVE BY	DATE	PART NO.	ITEM NO.	 Leader Of Industry
	X.±.012(0.30)	X.±5'	FRANK	23/JUL/13	FDM1505—MODS1XXXXX	FDM1505	
DESIGN UNITS Inch (metric)	X.X±.008(0.20)	.X±2'	CHECKED BY	DATE	TITLE		REV 0 SHEET NO. 1/1
SCALE 5:1	X.XX±.006(0.15)	.XX±1'	CHERRY	23/JUL/13	Machined pin D—SUB connector 180° Vertical Male		
SIZE A4	X.XXX±.004(0.10)	.XXX±0.5'	DRAWN BY	DATE	THIS DRAWING CONTAINS INFORMATION THAT IS PROPRIETARY TO TXGA INDUSTRIAL ELECTRONICS(S.Z)CO.,LTD AND SHOULD NOT BE USED WITHOUT WRITTEN PERMISSION		
			JACOB	23/JUL/13			