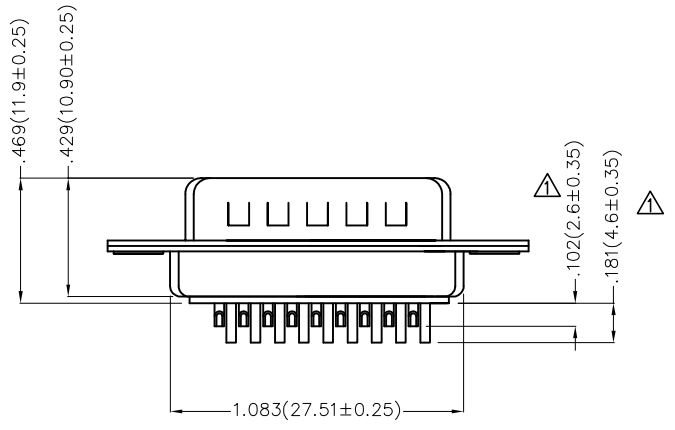
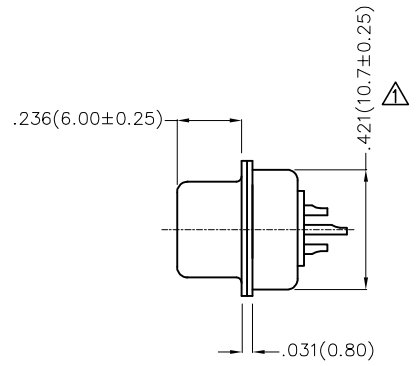
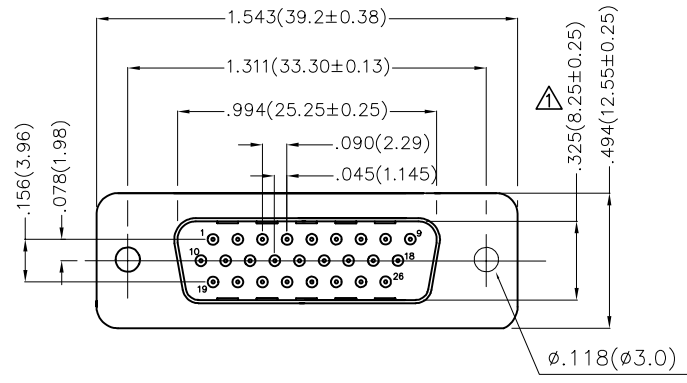


REV	LOCATIONS	DESCRIPTION	DATE	REVISER	APPD
1	△	Dimensions and tolerances change	25/APR/22	MATT	CHERRY



Ordering Information


FDM 26 11 — MO W S 1 XX XX K
 1 2 3 4 5 6 7 8 9 10

1 Category	2 Circuits	3 Distinction No.	4 Type	5 Assembly Layout
FDM-Machined pin D-SUB connector	26	11	MO-Male	W-Welding Type
6 Entry Angle	7 Plating	8 Thickness of Plating	9 Color-Resin	10 Packaging
S-180° Vertical	1-Gold Plated	01-1µ" 03-3µ" Custom plate available	W1-White K6-Black	K-Tray

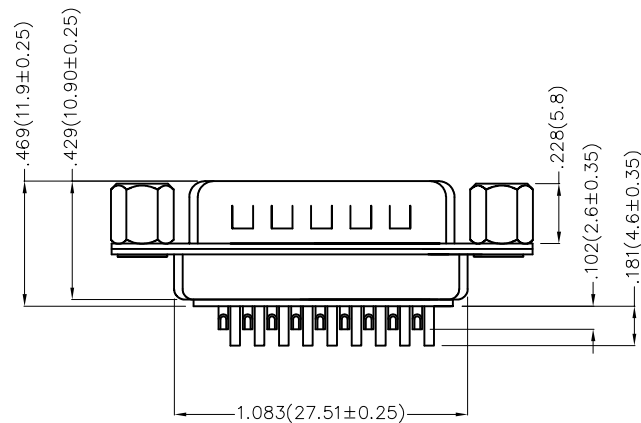
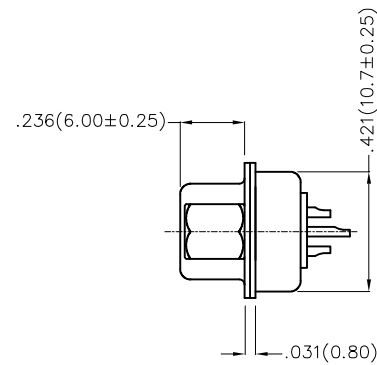
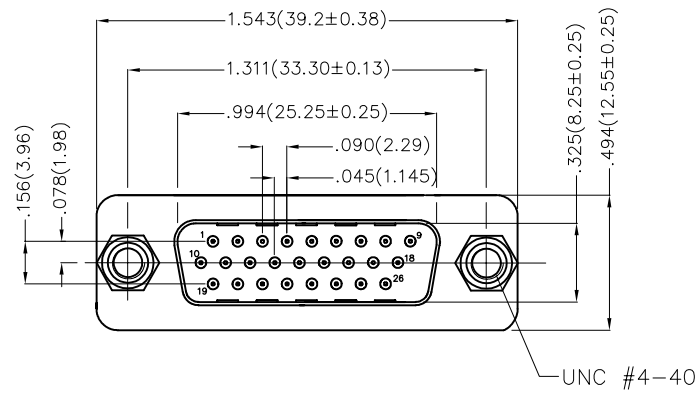
SPECIFICATION

Material and Plating
 Insulator: PBT +30% G.F (UL94V-0)
 Contact: Brass/ Gold plated
 Shell: SPCC/ Front Nickel plated, Back Tin plated

Electrical
 Current Rating: 5A
 Voltage Rating: 300V
 Contact resistance: 30mΩ Max
 Insulation resistance: 5000MΩ Min. at 500V DC
 Dielectric Withstanding Voltage :1000V AC r.m.s Min
 Temperature Range-Operating: -55°C ~ +105°C

THIRD ANGLE PROJECTION	GENERAL TOLERANCES (UNLESS SPECIFIED)		APPROVE BY	DATE	PART NO.	ITEM NO.	 Leader Of Industry
	X.±.012(0.30)	X:±5'	FRANK	23/JUL/13	FDM2611-MOWS1XXXXX	FDM2611-MO	
DESIGN UNITS Inch (metric)	X.X±.008(0.20)	.X'±2'	CHECKED BY	DATE	TITLE		REV 1
	X.XX±.006(0.15)	.XX'±1'	CHERRY	23/JUL/13	Machined pin D-SUB connector 180° Vertical Male		
SCALE	SIZE	X.XXX±.004(0.10)	.XX'±0.5'	DRAWN BY	DATE	THIS DRAWING CONTAINS INFORMATION THAT IS PROPRIETARY TO TXGA INDUSTRIAL ELECTRONICS(S.Z)CO.,LTD AND SHOULD NOT BE USED WITHOUT WRITTEN PERMISSION	
5:1	A4			JACOB	23/JUL/13	SHEET NO. 1/1	

REV	LOCATIONS	DESCRIPTION	DATE	REVISER	APPD



Ordering Information

FDM 26 11 — MO W S 1 XX XX K A
 1 2 3 4 5 6 7 8 9 10 11

1 Category	2 Circuits	3 Distinction No.	4 Type	5 Assembly Layout	
FDM-Machined pin D-SUB connector	26	11	MO-Male	W-Welding Type	
6 Entry Angle	7 Plating	8 Thickness of Plating	9 Color-Resin	10 Packaging	11 Type
S-180° Vertical	1-Gold Plated	01-1μ" 03-3μ" Custom plate available	W1-White K6-Black	K-Tray	A-A type


SPECIFICATION

Material and Plating

Insulator: PBT +30% G.F (UL94V-0)
 Contact: Brass/ Gold plated
 Shell: SPCC/ Front Nickel plated, Back Tin plated

Electrical

Current Rating: 5A
 Voltage Rating: 300V
 Contact resistance: 30mΩ Max
 Insulation resistance: 5000MΩ Min. at 500V DC
 Dielectric Withstanding Voltage :1000V AC r.m.s Min
 Temperature Range-Operating: -55°C ~ +105°C

THIRD ANGLE PROJECTION	GENERAL TOLERANCES (UNLESS SPECIFIED)		APPROVE BY	DATE	PART NO.	ITEM NO.	 Leader Of Industry
	X.±.012(0.30)	X:±5'	FRANK	09/OCT/22	FDM2611-MOWS1XXXXXA	FDM2611-MO	
DESIGN UNITS Inch (metric)	X.X±.008(0.20)	.X'±2'	CHECKED BY	DATE	TITLE		REV 0
SCALE 5:1	X.XX±.006(0.15)	.XX'±1'	CHERRY	09/OCT/22	Machined pin D-SUB connector 180° Vertical Male		SHEET NO. 1/1
SIZE A4	X.XXX±.004(0.10)	.XXX'±0.5'	DRAWN BY	DATE	THIS DRAWING CONTAINS INFORMATION THAT IS PROPRIETARY TO TXGA INDUSTRIAL ELECTRONICS(S.Z)CO.,LTD AND SHOULD NOT BE USED WITHOUT WRITTEN PERMISSION		
			MATT	09/OCT/22			