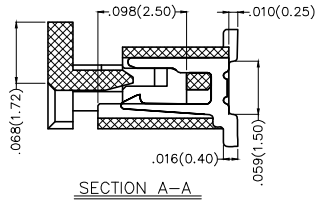
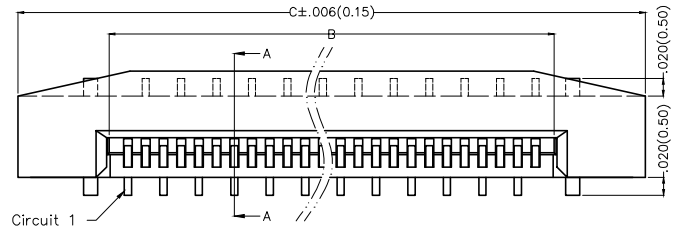
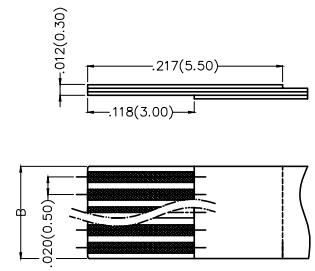
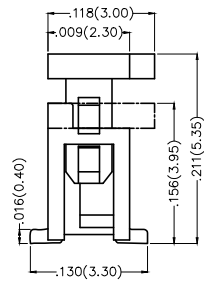
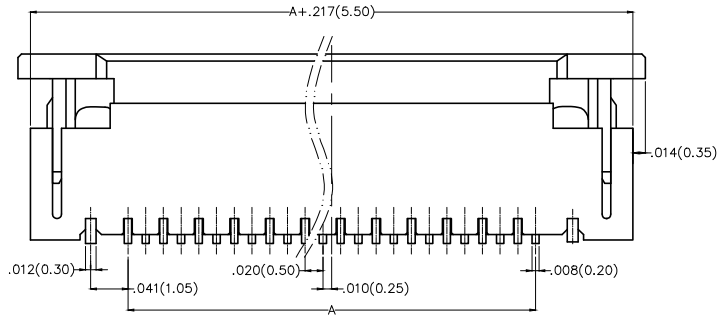


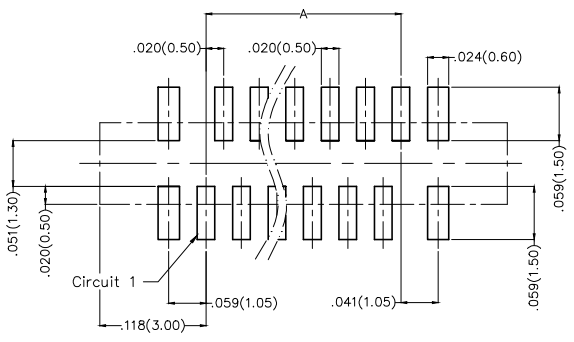
REV	LOCATIONS	DESCRIPTION	DATE	REVISER	APPD
1	△	Dimensions change	19/DEC/19	KATE	CHERRY



SPECIFICATIONS
Electrical
 Current Rating: 0.5A AC(rms)/DC
 Voltage Rating: 50V AC(rms)/DC
 Contact Resistance: 20 mΩ Max
 Insulation Resistance: 500 MΩ MIN
 Withstanding Voltage: 200V AC r.m.s
 Temperature Range—Operating: -40°C~+85°C
Material and Plating
 Housing: PA6T UL 94V-0
 Actuator: PPS UL 94V-0
 Contact: Phosphor Bronze/ Tin Plated
 Stopper: Phosphor Bronze/ Tin Plated



Applicable FFC
Recommended Dimension



Recommended P.C.Board Layout

Ordering Information

FFC 050 09 — XX S S A 1 X 4 W5 M
 1 2 3 4 5 6 7 8 9 10 11 12



1	Category FFC-FPC	2	Series Number 050-Pitch 0.50mm	3	Distinction No. 09	4	Circuits XX	5	Assemble Layout S-SMT	6	Entry Angle S-180° Vertical
7	Contact Position A-Positive Needle	8	ZIF 1-ZIF	9	Plating 2-Tin plated 1-Gold plated	10	Material-Resin 4-PA6T	11	Color-Resin W5-Housing: Natural, Actuator: Brown	12	Packaging M-Reel

 THIRD ANGLE PROJECTION	GENERAL TOLERANCES (UNLESS SPECIFIED)		APPROVE BY FRANK	DATE 18/JUN/13	PART NO. FFC05009-XXSSA1X4W5M	ITEM NO. FFC05009	 Leader Of Industry
	DESIGN UNITS Inch (metric)	X.±.012(0.30) X.X±.008(0.20)	X.±5° .X'±2'	CHECKED BY JACOB	DATE 18/JUN/13	TITLE FPC/FFC connector 0.5mm Positive needle SMT	
SCALE 5:1	SIZE A4	X.XX±.006(0.15) X.XXX±.004(0.10)	.XX'±1° .XXX'±0.5°	DRAWN BY CHERRY	DATE 18/JUN/13	THIS DRAWING CONTAINS INFORMATION THAT IS PROPRIETARY TO TXGA INDUSTRIAL ELECTRONICS(S.Z)CO.,LTD AND SHOULD NOT BE USED WITHOUT WRITTEN PERMISSION	

1 2 3 4 5 6 7 8

REV	LOCATIONS	DESCRIPTION	DATE	REVISER	APPD

Circuits (n)	Part No.	Dimensions(in/mm)			Circuits (n)	Part No.	Dimensions(in/mm)		
		A	B	C			A	B	C
4	FFC05009-04SSA1X4W5M	.059(1.50)	.098(2.50)	.303(7.70)	33	FFC05009-33SSA1X4W5M	.630(16.00)	.669(17.00)	.874(22.20)
5	FFC05009-05SSA1X4W5M	.079(2.00)	.118(3.00)	.323(8.20)	34	FFC05009-34SSA1X4W5M	.650(16.50)	.689(17.50)	.894(22.70)
6	FFC05009-06SSA1X4W5M	.098(2.50)	.138(3.50)	.343(8.70)	35	FFC05009-35SSA1X4W5M	.669(17.00)	.709(18.00)	.913(23.20)
7	FFC05009-07SSA1X4W5M	.118(3.00)	.157(4.00)	.362(9.20)	36	FFC05009-36SSA1X4W5M	.689(17.50)	.728(18.50)	.933(23.70)
8	FFC05009-08SSA1X4W5M	.138(3.50)	.177(4.50)	.382(9.70)	37	FFC05009-37SSA1X4W5M	.709(18.00)	.748(19.00)	.953(24.20)
9	FFC05009-09SSA1X4W5M	.157(4.00)	.197(5.00)	.402(10.20)	38	FFC05009-38SSA1X4W5M	.728(18.50)	.768(19.50)	.972(24.70)
10	FFC05009-10SSA1X4W5M	.177(4.50)	.217(5.50)	.421(10.70)	39	FFC05009-39SSA1X4W5M	.748(19.00)	.787(20.00)	.992(25.20)
11	FFC05009-11SSA1X4W5M	.197(5.00)	.236(6.00)	.441(11.20)	40	FFC05009-40SSA1X4W5M	.768(19.50)	.807(20.50)	1.012(25.70)
12	FFC05009-12SSA1X4W5M	.217(5.50)	.256(6.50)	.461(11.70)	41	FFC05009-41SSA1X4W5M	.787(20.00)	.827(21.00)	1.031(26.20)
13	FFC05009-13SSA1X4W5M	.236(6.00)	.276(7.00)	.480(12.20)	42	FFC05009-42SSA1X4W5M	.807(20.50)	.846(21.50)	1.051(26.70)
14	FFC05009-14SSA1X4W5M	.256(6.50)	.295(7.50)	.500(12.70)	43	FFC05009-43SSA1X4W5M	.827(21.00)	.866(22.00)	1.071(27.20)
15	FFC05009-15SSA1X4W5M	.276(7.00)	.315(8.00)	.520(13.20)	44	FFC05009-44SSA1X4W5M	.846(21.50)	.886(22.50)	1.091(27.70)
16	FFC05009-16SSA1X4W5M	.295(7.50)	.335(8.50)	.539(13.70)	45	FFC05009-45SSA1X4W5M	.866(22.00)	.906(23.00)	1.110(28.20)
17	FFC05009-17SSA1X4W5M	.315(8.00)	.354(9.00)	.559(14.20)	46	FFC05009-46SSA1X4W5M	.886(22.50)	.925(23.50)	1.130(28.70)
18	FFC05009-18SSA1X4W5M	.335(8.50)	.374(9.50)	.579(14.70)	47	FFC05009-47SSA1X4W5M	.906(23.00)	.945(24.00)	1.150(29.20)
19	FFC05009-19SSA1X4W5M	.354(9.00)	.394(10.00)	.598(15.20)	48	FFC05009-48SSA1X4W5M	.925(23.50)	.965(24.50)	1.169(29.70)
20	FFC05009-20SSA1X4W5M	.374(9.50)	.413(10.50)	.618(15.70)	49	FFC05009-49SSA1X4W5M	.945(24.00)	.984(25.00)	1.189(30.20)
21	FFC05009-21SSA1X4W5M	.394(10.00)	.433(11.00)	.638(16.20)	50	FFC05009-50SSA1X4W5M	.965(24.50)	1.004(25.50)	1.209(30.70)
22	FFC05009-22SSA1X4W5M	.413(10.50)	.453(11.50)	.657(16.70)	51	FFC05009-51SSA1X4W5M	.984(25.00)	1.024(26.00)	1.228(31.20)
23	FFC05009-23SSA1X4W5M	.433(11.00)	.472(12.00)	.677(17.20)	52	FFC05009-52SSA1X4W5M	1.004(25.50)	1.043(26.50)	1.248(31.70)
24	FFC05009-24SSA1X4W5M	.453(11.50)	.492(12.50)	.697(17.70)	53	FFC05009-53SSA1X4W5M	1.024(26.00)	1.063(27.00)	1.268(32.20)
25	FFC05009-25SSA1X4W5M	.472(12.00)	.512(13.00)	.716(18.20)	54	FFC05009-54SSA1X4W5M	1.043(26.50)	1.083(27.50)	1.287(32.70)
26	FFC05009-26SSA1X4W5M	.492(12.50)	.531(13.50)	.736(18.70)	55	FFC05009-55SSA1X4W5M	1.063(27.00)	1.102(28.00)	1.307(33.20)
27	FFC05009-27SSA1X4W5M	.512(13.00)	.551(14.00)	.756(19.20)	56	FFC05009-56SSA1X4W5M	1.083(27.50)	1.122(28.50)	1.327(33.70)
28	FFC05009-28SSA1X4W5M	.531(13.50)	.571(14.50)	.776(19.70)	57	FFC05009-57SSA1X4W5M	1.102(28.00)	1.142(29.00)	1.346(34.20)
29	FFC05009-29SSA1X4W5M	.551(14.00)	.591(15.00)	.795(20.20)	58	FFC05009-58SSA1X4W5M	1.122(28.50)	1.161(29.50)	1.366(34.70)
30	FFC05009-30SSA1X4W5M	.571(14.50)	.610(15.50)	.815(20.70)	59	FFC05009-59SSA1X4W5M	1.142(29.00)	1.181(30.00)	1.386(35.20)
31	FFC05009-31SSA1X4W5M	.591(15.00)	.630(16.00)	.835(21.20)	60	FFC05009-60SSA1X4W5M	1.161(29.50)	1.201(30.50)	1.406(35.70)
32	FFC05009-32SSA1X4W5M	.610(15.50)	.650(16.50)	.854(21.70)					

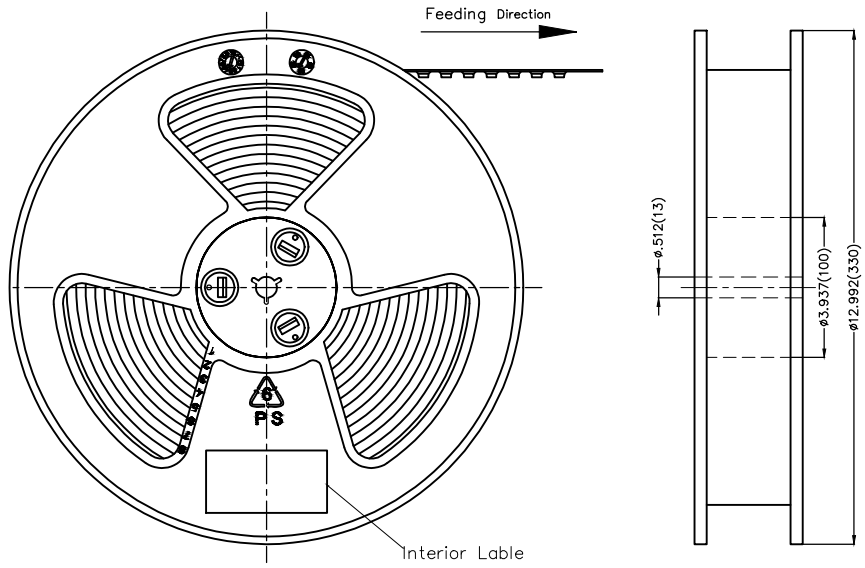
 THIRD ANGLE PROJECTION	GENERAL TOLERANCES (UNLESS SPECIFIED)		APPROVE BY FRANK	DATE 18/JUN/13	PART NO. FFC05009-XXSSA1X4W5M	ITEM NO. FFC05009	 Leader Of Industry	
	X.±.012(0.30)	X.±5'	CHECKED BY JACOB	DATE 18/JUN/13	TITLE FFC/FFC connector 0.5mm Positive needle SMT			REV 1
	DESIGN UNITS Inch (metric)	X.XX±.008(0.20)	.X'±2'	DRAWN BY CHERRY	DATE 18/JUN/13	THIS DRAWING CONTAINS INFORMATION THAT IS PROPRIETARY TO TXGA INDUSTRIAL ELECTRONICS(S.Z)CO.,LTD AND SHOULD NOT BE USED WITHOUT WRITTEN PERMISSION		
	SCALE 5:1	SIZE A4	X.XX±.006(0.15)	.XX'±1'				

1 2 3 4 5 6 7 8

REV	LOCATIONS	DESCRIPTION	DATE	REVISED	APPD

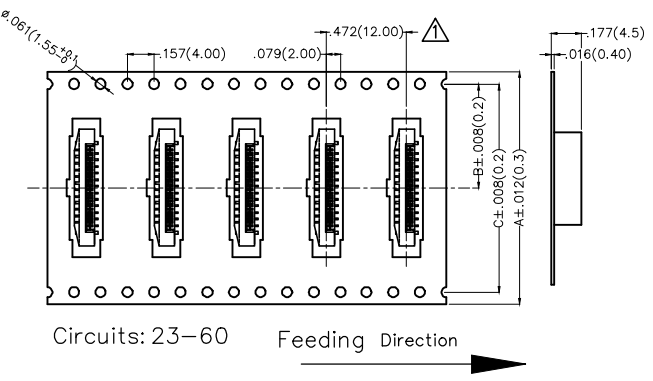
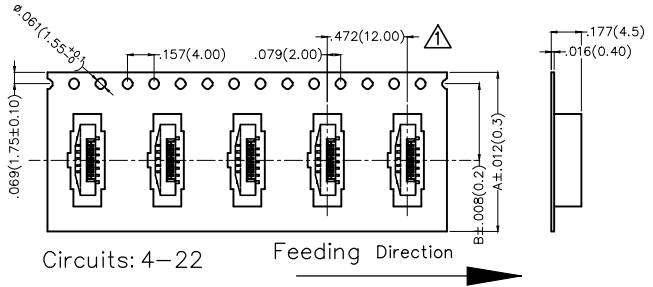
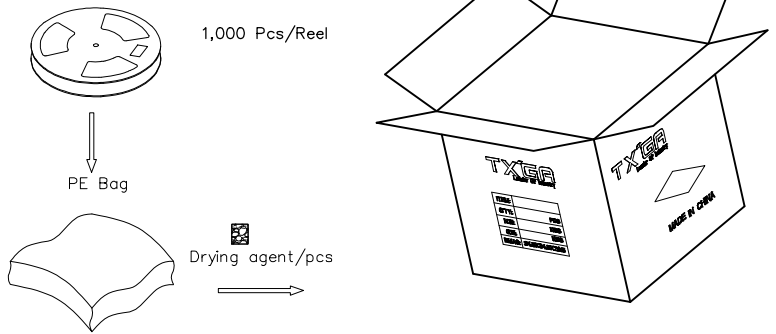
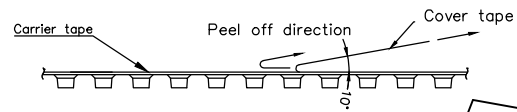
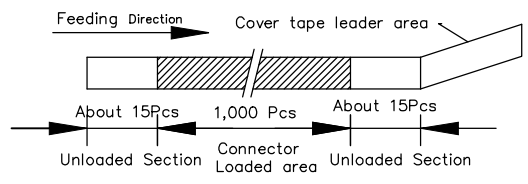
A
B
C
D
E
F

A
B
C
D
E
F



- Note:
1. 10 sprocket hole cumulative tolerance $\pm 0.2\text{mm}$
 2. Carrier camber is within 1.0mm in 250mm
 3. Material: Black Conductive polystyrene Alloy 100% recyclable
 4. All dimensions meet EIA-481-3 requirements
 5. Peel off force of cover tape & carrier tape: 20g~130g(0.2N~1.3N)
 6. Component load per 13" reel: 1,000 pcs

Circuits (n)	Dimensions(in/mm)		
	A	B	C
4~7	.630(16.0)	.295(7.5)	-
8~22	.945(24.0)	.453(11.5)	-
23~32	1.260(32.0)	.561(14.25)	1.122(28.50)
33~50	1.732(44.0)	.797(20.25)	1.594(40.50)
51~60	2.205(56.0)	1.033(26.25)	2.067(52.50)



 THIRD ANGLE PROJECTION	GENERAL TOLERANCES (UNLESS SPECIFIED)		APPROVE BY	DATE	PART NO.	ITEM NO.	 Leader Of Industry
	X. \pm .012(0.30)	X. \pm 5'	FRANK	18/JUN/13	FFC05009-XXSSA1X4W5M	FFC05009	
DESIGN UNITS Inch (metric)	X.X \pm .008(0.20)	.X \pm 2'	CHECKED BY	DATE	TITLE		REV 1 SHEET NO. 3/3
SCALE	X.XX \pm .006(0.15)	.XX \pm 1'	JACOB	18/JUN/13	FPC/FFC connector 0.5mm Positive needle SMT		
SIZE	X.XXX \pm .004(0.10)	.XXX \pm 0.5'	DRAWN BY	DATE	THIS DRAWING CONTAINS INFORMATION THAT IS PROPRIETARY TO TXGA INDUSTRIAL ELECTRONICS(S.Z)CO.,LTD AND SHOULD NOT BE USED WITHOUT WRITTEN PERMISSION		CHERRY
5:1	A4			18/JUN/13			