

1 2 3 4 5 6 7 8

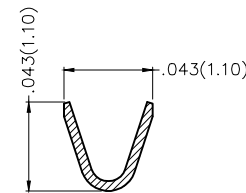
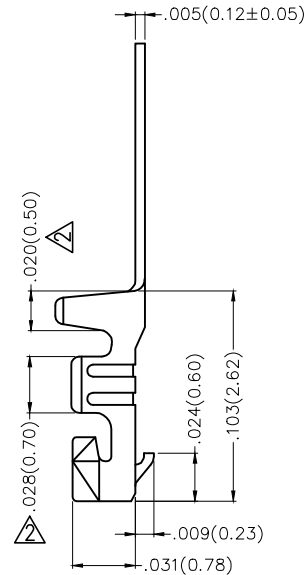
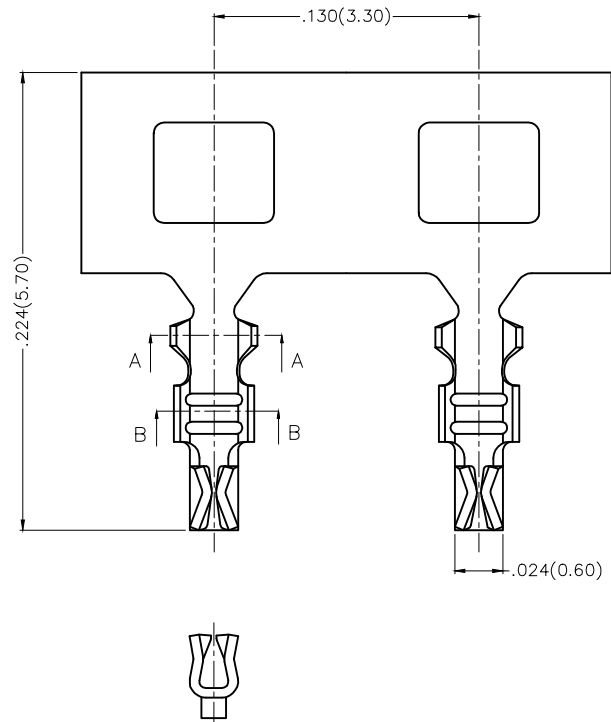
| REV | LOCATIONS | DESCRIPTION | DATE | REVISER | APPD |
|-----|-----------|---|-----------|---------|--------|
| 1 | △ | MOQ: Change 25,000 into 30,000 pcs/reel | 14/SEP/18 | KATE | FRANK |
| 2 | △ | Add dimensions | 15/APR/20 | KATE | CHERRY |

SPECIFICATIONS

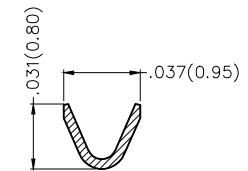
Electrical

Current Rating: 1.5A AC(rms)/DC
 Voltage Rating: 50V AC(rms)/DC
 Contact Resistance: 20 mΩ Max
 Insulation Resistance: 100 MΩ Min
 Withstanding Voltage: 500V AC r.m.s
 Temperature Range—Operating: -25°C~+85°C

Material: Phosphor Bronze
 Plating: Tin Or Gold Plated Over Nickel
 Wire Range: 32AWG
 Applicable Housing: FHG08002 Series
 Minimum Order Quantity 30,000 PCS



Section A-A



Section B-B

Ordering Information

FT 080 01 — F X H
 1 2 3 4 5 6

| | | | | | | | | | | | |
|---|-------------|---|-----------------|---|-----------------|---|----------|---|-------------------------------|---|--------------|
| 1 | Category | 2 | Series Number | 3 | Distinction No. | 4 | Type | 5 | Plating | 6 | Packaging |
| | FT—Terminal | | 080—Pitch0.80mm | | 01 | | F—Female | | 1—Gold Plated 2—Tin Plated | | H—Paper Axis |

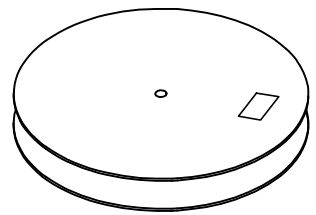
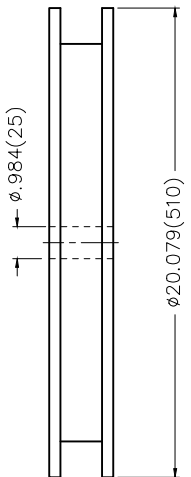
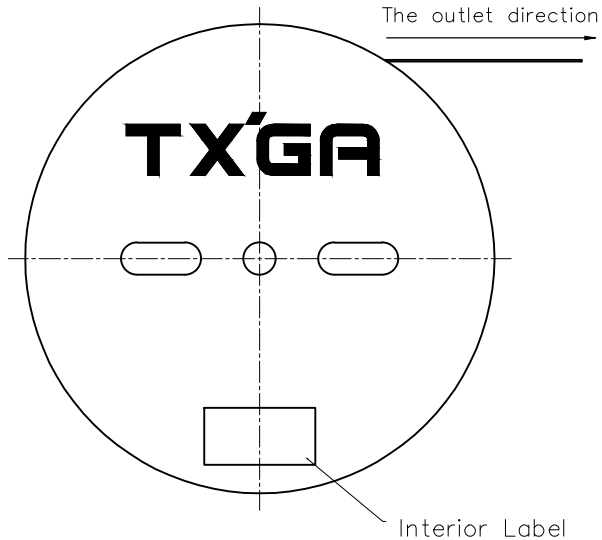
| | | | | | | | | |
|-------------------------------|---------------------------------------|------------|------------|-----------|--|----------|---------------------------|---------------|
| <p>THIRD ANGLE PROJECTION</p> | GENERAL TOLERANCES (UNLESS SPECIFIED) | | APPROVE BY | DATE | PART NO. | ITEM NO. | <p>Leader Of Industry</p> | |
| | X.±.012(0.30) | X.±5' | FRANK | 04/JUN/15 | FT08001-FXH | FT08001 | | |
| DESIGN UNITS Inch (metric) | X.X±.008(0.20) | .X'±2' | CHECKED BY | DATE | TITLE | | REV 2 | SHEET NO. 1/2 |
| SCALE 5:1 | X.XX±.006(0.15) | .XX'±1' | CHERRY | 04/JUN/15 | Wire to Board Pitch 0.8mm(Terminal) | | | |
| SIZE A4 | X.XXX±.004(0.10) | .XXX'±0.5' | DRAWN BY | DATE | THIS DRAWING CONTAINS INFORMATION THAT IS PROPRIETARY TO TXGA INDUSTRIAL ELECTRONICS(S.Z)CO.,LTD AND SHOULD NOT BE USED WITHOUT WRITTEN PERMISSION | | | |
| | | | KATE | 04/JUN/15 | | | | |

1 2 3 4 5 6 7 8

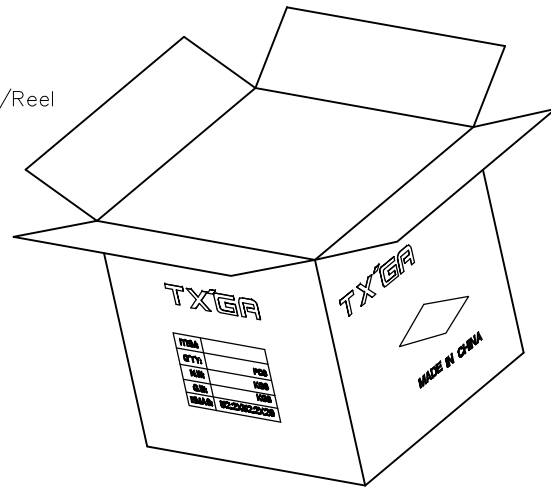
1 2 3 4 5 6 7 8

| REV | LOCATIONS | DESCRIPTION | DATE | REVISER | APPD |
|-----|-----------|-------------|------|---------|------|
| | | | | | |

A
B
C
D
E
F



30,000 Pcs/Reel
▲



| | | | | | | | |
|-------------------------------|--|------------------|---------------------|--|-------------------------|---|------------------------|
| THIRD ANGLE PROJECTION | GENERAL TOLERANCES (UNLESS SPECIFIED) | | APPROVE BY FRANK | DATE 04/JUN/15 | PART NO. FT08001-FXH | ITEM NO. FT08001 | Leader Of Industry |
| | DESIGN UNITS Inch (metric) | X.±.012(0.30) | X.±5' | CHECKED BY CHERRY | DATE 04/JUN/15 | TITLE Wire to Board Pitch 0.8mm(Terminal) | |
| SCALE 5:1 | SIZE A4 | X.XX±.006(0.15) | .XX'±1' | DRAWN BY KATE | DATE 04/JUN/15 | REV 2 SHEET NO. 2/2 | |
| | | X.XXX±.004(0.10) | .XXX'±0.5' | THIS DRAWING CONTAINS INFORMATION THAT IS PROPRIETARY TO TXGA INDUSTRIAL ELECTRONICS(S.Z)CO.,LTD AND SHOULD NOT BE USED WITHOUT WRITTEN PERMISSION | | | |

1 2 3 4 5 6 7 8