

REV	LOCATIONS	DESCRIPTION	DATE	REVISER	APPD
1	△	Size change	08/MAY/20	KATE	CHERRY

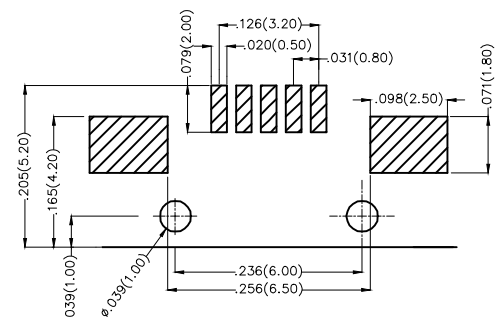
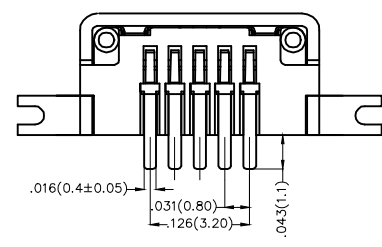
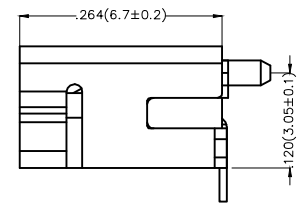
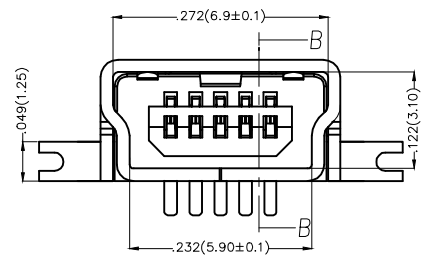
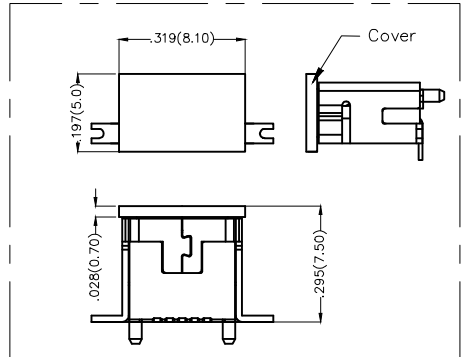
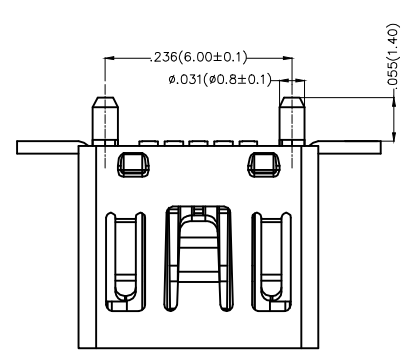
Electrical

Current Rating: 1A(2,3,4Pin)AC(rms)/DC
 2A(1,5Pin)AC(rms)/DC

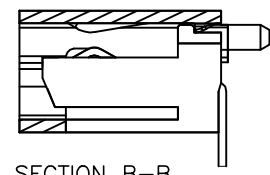
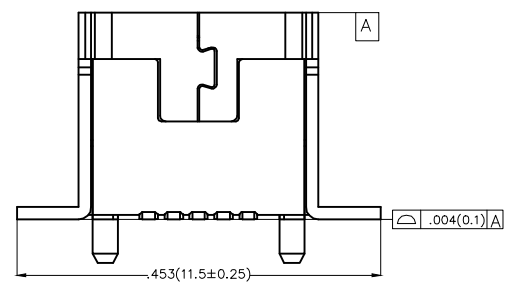
Voltage Rating: 30V AC(rms)/DC
 Contact Resistance: 50 mΩ Max
 Insulation Resistance: 100 MΩ MIN
 Withstanding Voltage: 100V AC r.m.s
 Temperature Range-Operating: -20°C~+85°C

Material and Plating

Housing: LCP(UL 94V-0) Black
 Shell: Copper alloy
 Contact Pin: Phosphor Bronze
 Plating: Selective gold in contact area, Tin on tail.



Recommended P.C.Board Layout
 Tolerances ±.002(0.05)



SECTION B-B

 THIRD ANGLE PROJECTION	GENERAL TOLERANCES (UNLESS SPECIFIED)		APPROVE BY FRANK	DATE 15/JUL/13	PART NO. FUS128-FSSK6K	ITEM NO. FUS128	 Leader Of Industry
	DESIGN UNITS Inch (metric)	X.±.012(0.30)	X.±5'	CHECKED BY CHERRY	DATE 15/JUL/13	TITLE Mini USB 5Circuits 180°Vertical Female(SMT)	
SCALE 5:1	SIZE A4	X.XX±.008(0.20)	.XX±1'	DRAWN BY JACOB	DATE 15/JUL/13	THIS DRAWING CONTAINS INFORMATION THAT IS PROPRIETARY TO TXGA INDUSTRIAL ELECTRONICS(S.Z)CO.,LTD AND SHOULD NOT BE USED WITHOUT WRITTEN PERMISSION	
		X.XXX±.004(0.10)	.XXX±0.5'			REV 1	SHEET NO. 1/1