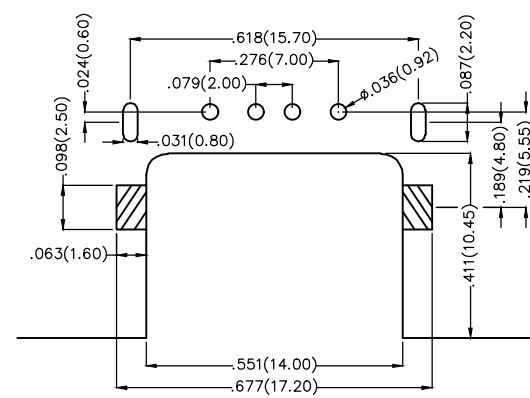
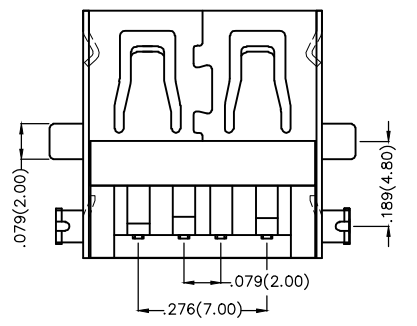
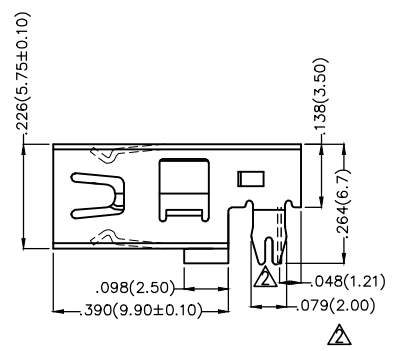
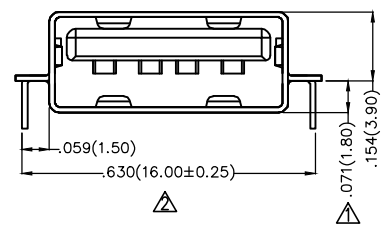
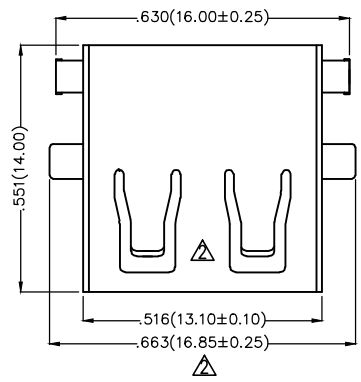


REV	LOCATIONS	DESCRIPTION	DATE	REVISER	APPD
1	△	Size changes	28/FEB/17	KATE	FRANK
2	△	1. Structure change 2. Size changes	27/SEP/19	KATE	CHERRY

Electrical

Current Rating: 1.5A AC(rms)/DC
Voltage Rating: 30V AC(rms)/DC
Contact Resistance: 30 mΩ Max
Insulation Resistance: 1000 MΩ MIN
Withstanding Voltage: 500V AC r.m.s
Temperature Range-Operating: -35°C~+85°C
Material and Plating
Housing: LCP(UL 94V-0)
Terminal: Copper alloy/ Gold in contact area, tin on tail.
Shell: Copper Alloy/ Nickel plated



Recommended P.C.Board Layout
(General Tolerance : ±.002(0.05))

 THIRD ANGLE PROJECTION	GENERAL TOLERANCES (UNLESS SPECIFIED)		APPROVE BY FRANK	DATE 21/JUN/13	PART NO. FUS232-FDBK6K	ITEM NO. FUS232	 Leader Of Industry	
	X.±.012(0.30)	X.±5°	CHECKED BY CHERRY	DATE 21/JUN/13	TITLE USB A-type 4Circuits 90°Angle Female(DIP)			REV 2
	DESIGN UNITS Inch (metric)	X.X±.008(0.20)	.X±2°	DRAWN BY JACOB	DATE 21/JUN/13	THIS DRAWING CONTAINS INFORMATION THAT IS PROPRIETARY TO TXGA INDUSTRIAL ELECTRONICS(S.Z)CO.,LTD AND SHOULD NOT BE USED WITHOUT WRITTEN PERMISSION		
	SCALE 5:1	SIZE A4	X.XX±.006(0.15)	X.XX±1°	X.XXX±.004(0.10)	X.XX±0.5°		