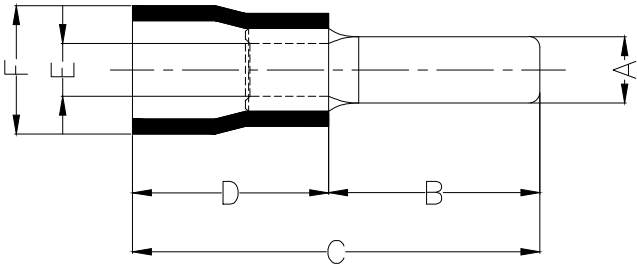
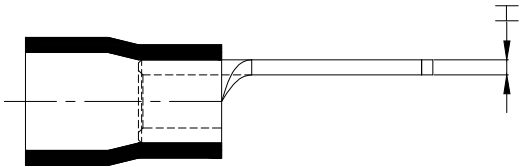


1 2 3 4 5 6 7 8

REV	LOCATIONS	DESCRIPTION	DATE	REVISER	APPD

Notes:

Material: Copper
 Plating: Matte tin plated
 Insulator: PVC (UL 94V-0) Red
 Wire range: 0.5~1.5mm² / (22~16AWG)
 Temperature Range—Operating: 0°C~75°C
 Maximum electrical rating: 600V
 Max current: 19A



Dimensions						
A	B	C	D	E	F	G
±0.5	±1	±1	±1	±0.5	±0.5	±0.05
3.0	13.7	24.4	10.7	1.7	4.2	0.65

<p>THIRD ANGLE PROJECTION</p>	GENERAL TOLERANCES (UNLESS SPECIFIED)		APPROVE BY	DATE	PART NO.	ITEM NO.	<p>Building Technology Cornerstone</p>		
	X. ±0.30	X.* ±5'	LEO	19/JAN/21	FLT02-001251400ARD2	FLT02			
	DESIGN UNITS mm		CHECKED BY	DATE	TITLE			REV 0	SHEET NO. 1/1
	X.X ±0.20	X.X' ±2'	GISELLE	19/JAN/21	Blade terminl				
SCALE 5:1	SIZE A4	X.XX ±0.15	X.XX' ±1'	DRAWN BY	DATE	THIS DRAWING CONTAINS INFORMATION THAT IS PROPRIETARY TO TXGA INDUSTRIAL ELECTRONICS(S.Z)CO.,LTD AND SHOULD NOT BE USED WITHOUT WRITTEN PERMISSION			
		X.XXX ±0.10	X.XXX' ±0.5'	PYD	19/JAN/21				

1 2 3 4 5 6 7 8

A
B
C
D
E
F

A
B
C
D
E
F