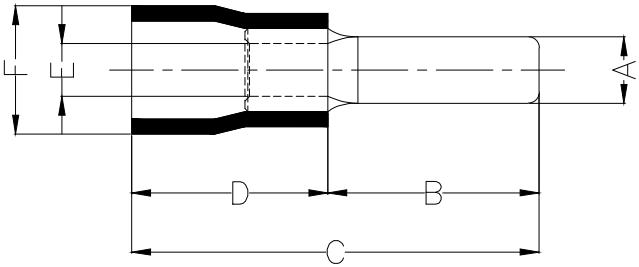
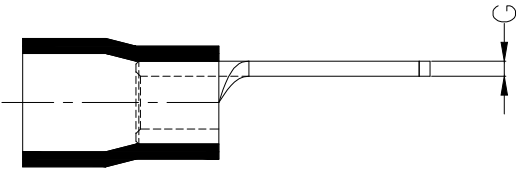


1 2 3 4 5 6 7 8

REV	LOCATIONS	DESCRIPTION	DATE	REVISER	APPD

Notes:

Material: Copper  
 Plating: Matte tin plated  
 Insulator: PVC (UL 94V-0) Blue  
 Wire range: 1.5~2.5mm<sup>2</sup> / (16~14AWG)  
 Temperature Range—Operating: 0°C~75°C  
 Maximum electrical rating: 600V  
 Max current: 27A



Dimensions						
A	B	C	D	E	F	G
±0.5	±1	±1	±1	±0.5	±0.5	±0.05
2.3	9.9	20.5	10.6	2.3	4.7	0.8

<p>THIRD ANGLE PROJECTION</p>	GENERAL TOLERANCES (UNLESS SPECIFIED)		APPROVE BY	DATE	PART NO.	ITEM NO.	<p>Building Technology Cornerstone</p>
	X. ±0.30	X.* ±5'	LEO	19/JAN/21	FLT02-002001000ABU2	FLT02	
	X.X ±0.20	X.X' ±2'	CHECKED BY	DATE	TITLE		
	X.XX ±0.15	X.XX' ±1'	GISELLE	19/JAN/21	Blade terminl		
SCALE	SIZE	X.XXX ±0.10	X.XXX' ±0.5'	DRAWN BY	DATE	THIS DRAWING CONTAINS INFORMATION THAT IS PROPRIETARY TO TXGA INDUSTRIAL ELECTRONICS(S.Z)CO.,LTD AND SHOULD NOT BE USED WITHOUT WRITTEN PERMISSION	
5:1	A4			PYD	19/JAN/21	REV 0	SHEET NO. 1/1

1 2 3 4 5 6 7 8