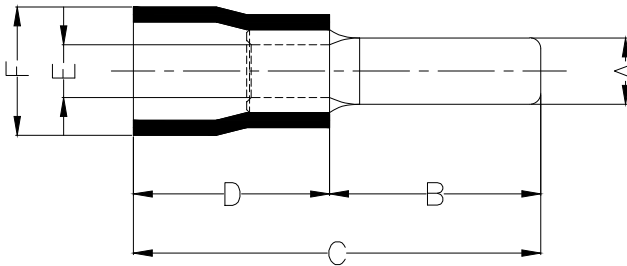
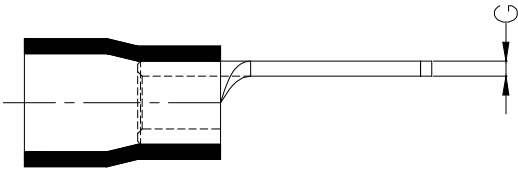


1 2 3 4 5 6 7 8

| REV | LOCATIONS | DESCRIPTION | DATE | REVISER | APPD |
|-----|-----------|-------------|------|---------|------|
| | | | | | |

Notes:

Material: Copper
 Plating: Matte tin plated
 Insulator: PVC (UL 94V-0) Yellow
 Wire range: 4~6mm²/ (12~10AWG)
 Temperature Range-Operating: 0°C~75°C
 Maximum electrical rating: 600V
 Max current: 48A



| Dimensions | | | | | | |
|------------|------|------|------|------|------|-------|
| A | B | C | D | E | F | G |
| ±0.5 | ±1 | ±1 | ±1 | ±0.5 | ±0.5 | ±0.05 |
| 4.0 | 13.8 | 27.3 | 13.5 | 3.4 | 6.5 | 1.0 |

| | | | | | | | | |
|-------------------------------|---------------------------------------|-------------|--------------|-----------|---------------------|--|--|---------------|
| <p>THIRD ANGLE PROJECTION</p> | GENERAL TOLERANCES (UNLESS SPECIFIED) | | APPROVE BY | DATE | PART NO. | ITEM NO. | <p>Building Technology Cornerstone</p> | |
| | X. ±0.30 | X.* ±5' | LEO | 19/JAN/21 | FLT02-00550140SAYE2 | FLT02 | | |
| | X.X ±0.20 | X.X' ±2' | CHECKED BY | DATE | TITLE | REV 0 | | SHEET NO. 1/1 |
| | X.XX ±0.15 | X.XX' ±1' | GISELLE | 19/JAN/21 | Blade terminl | | | |
| SCALE | SIZE | X.XXX ±0.10 | X.XXX' ±0.5' | DRAWN BY | DATE | THIS DRAWING CONTAINS INFORMATION THAT IS PROPRIETARY TO TXGA INDUSTRIAL ELECTRONICS(S.Z)CO.,LTD AND SHOULD NOT BE USED WITHOUT WRITTEN PERMISSION | | |
| 5:1 | A4 | | | PYD | 19/JAN/21 | | | |

1 2 3 4 5 6 7 8

A
B
C
D
E
F

A
B
C
D
E
F