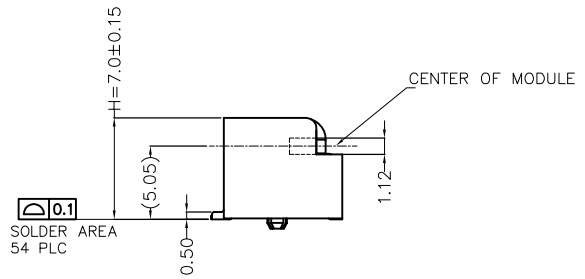
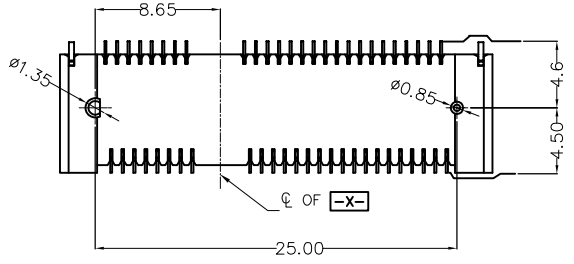
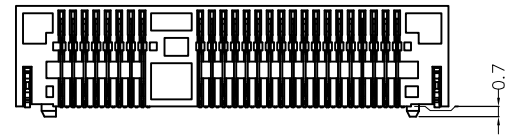
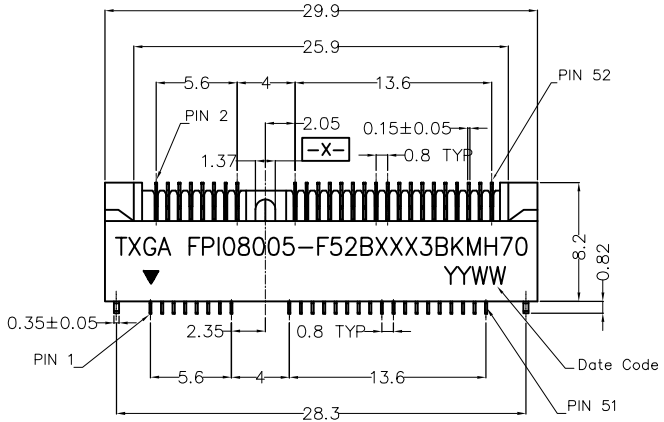


REV	LOCATIONS	DESCRIPTION	DATE	REVISER	APPD

**SPECIFICATIONS**

**Electrical**  
 Current Rating: 0.5A AC(rms)/DC  
 Voltage Rating: 50V AC(rms)/DC  
 Contact Resistance: 55mΩ Max  
 Insulation Resistance: 500MΩ Min  
 Withstanding Voltage: 300V AC r.m.s  
 Temperature Range-Operating: -40°C ~ +80°C

**Material**  
 Housing: LCP (UL 94V-0) Black  
 Contact: Copper Alloy/ Selected gold plated on contact area,  
 1u" Min. gold plated on solder tails  
 Pegs: Copper Alloy/ 120u" Min. Matte Tin Plated



**Ordering Information**

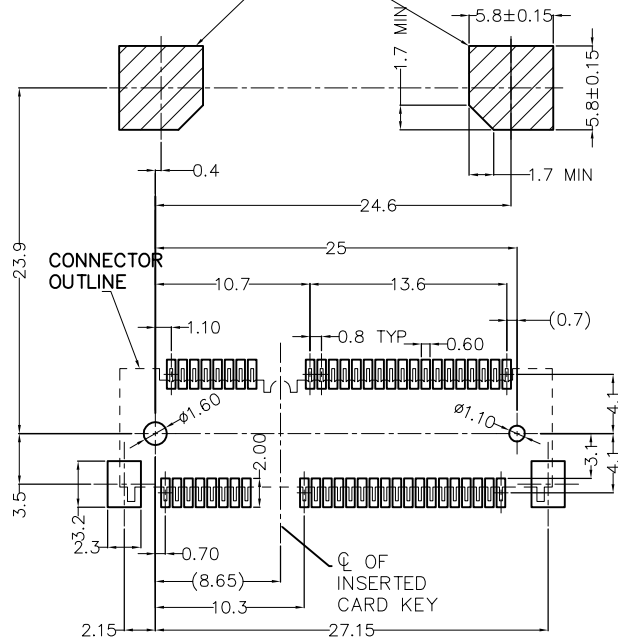
FPI 080 05 - F 52 B 1 XX 3 BK M H70  
 1 2 3 4 5 6 7 8 9 10 11 12

1 Category FPI-MINI PCI	2 Series Number 080-Pitch0.80mm	3 Distinction No. 05	4 Type F-Female	5 Circuits 52	6 Entry Angle B-90° Angle	7 Plating 1-Gold Plated
8 thickness of Gold Plating 00-Gold Flash 10-10u" 30-30u"	9 Material-Resin 3-LCP	10 Color-Resin BK-Black	11 Packaging M-Reel	12 Connector Height(H) H70-7.0mm		

<p>THIRD ANGLE PROJECTION</p>	GENERAL TOLERANCES (UNLESS SPECIFIED)		APPROVE BY LEO	DATE 20/JUL/24	PART NO. FPI08005-F52BXXX3BKM70	ITEM NO. FPI08005	<p>Building Technology Cornerstone</p>	
	X. ±0.30	X.* ±5°	CHECKED BY GISELLE	DATE 20/JUL/24	TITLE MINI PCI Express (H7.0mm) Pitch 0.8mm 90° Angle			REV 0
	X.X ±0.20	X.X* ±2°	DRAWN BY MATT	DATE 20/JUL/24	THIS DRAWING CONTAINS INFORMATION THAT IS PROPRIETARY TO TXGA INDUSTRIAL ELECTRONICS(S.Z)CO.,LTD AND SHOULD NOT BE USED WITHOUT WRITTEN PERMISSION			SHEET NO. 1/2
SCALE 5:1	SIZE A4	X.XX ±0.15	X.XX* ±1°					
X.XXX ±0.10	X.XXX* ±0.5°							

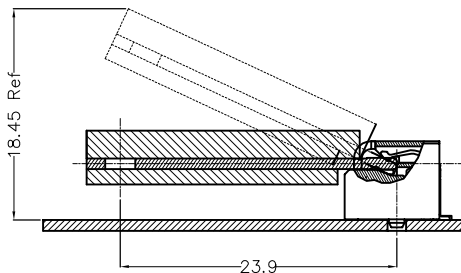
REV	LOCATIONS	DESCRIPTION	DATE	REVISER	APPD

COMPONENT KEEP OUT AREA FOR  
CARD HOLD DOWN SOLUTION



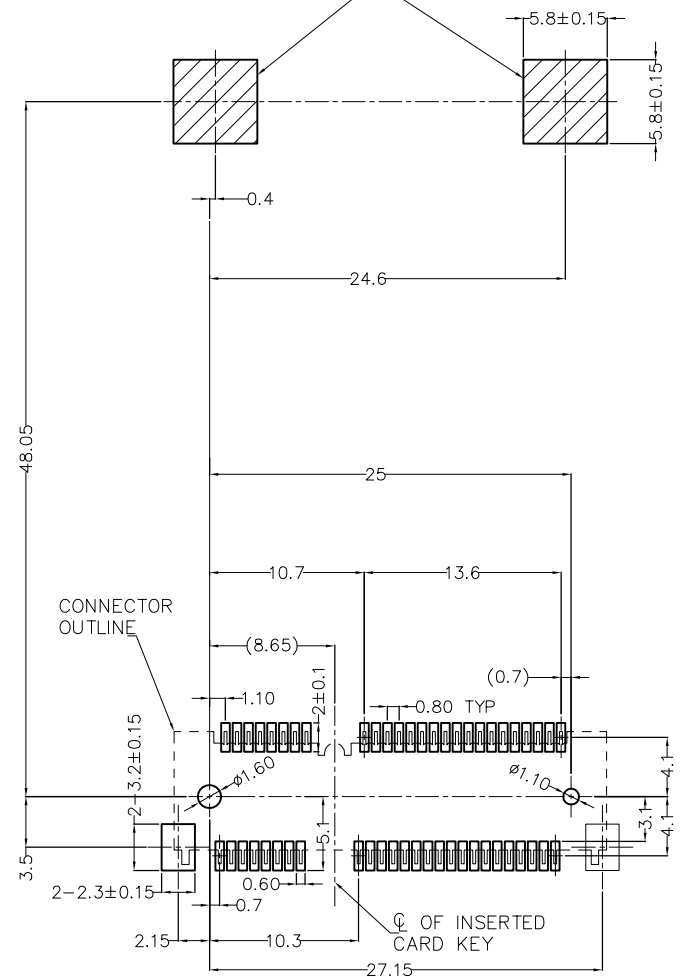
Recommended P.C.Board Layout For Half Card

General tolerances:  $\pm 0.05\text{mm}$



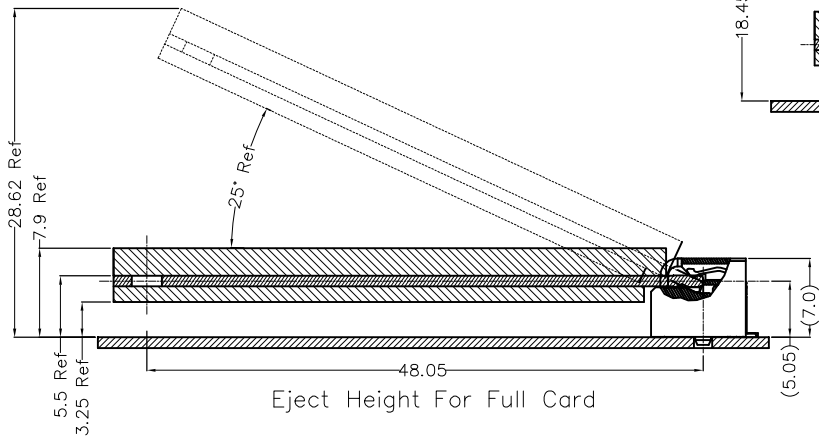
Eject Height For Half Card

COMPONENT KEEP OUT AREA FOR  
CARD HOLD DOWN SOLUTION



Recommended P.C.Board Layout For Full Card

General tolerances:  $\pm 0.05\text{mm}$



Eject Height For Full Card

 THIRD ANGLE PROJECTION	GENERAL TOLERANCES (UNLESS SPECIFIED)		APPROVE BY LEO	DATE 20/JUL/24	PART NO. FPI08005-F52BXXX3BKM70	ITEM NO. FPI08005	 Building Technology Cornerstone
	X. $\pm 0.30$	X.° $\pm 5^\circ$	CHECKED BY GISELLE	DATE 20/JUL/24	TITLE MINI PCI Express (H7.0mm) Pitch 0.8mm 90° Angle		
DESIGN UNITS METRIC(mm)	X.X $\pm 0.20$	X.X° $\pm 2^\circ$	DRAWN BY MATT	DATE 20/JUL/24	THIS DRAWING CONTAINS INFORMATION THAT IS PROPRIETARY TO TXGA INDUSTRIAL ELECTRONICS(S.Z)CO.,LTD AND SHOULD NOT BE USED WITHOUT WRITTEN PERMISSION		
SCALE 5:1	X.XX $\pm 0.15$	X.XX° $\pm 1^\circ$		DATE 20/JUL/24			
SIZE A4	X.XXX $\pm 0.10$	X.XXX° $\pm 0.5^\circ$					