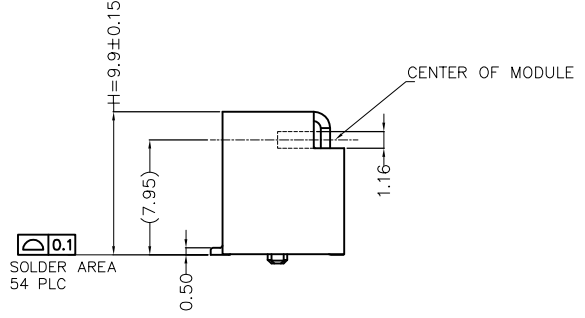
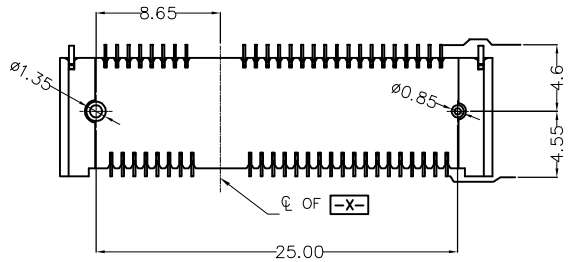
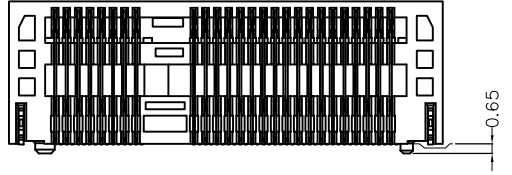
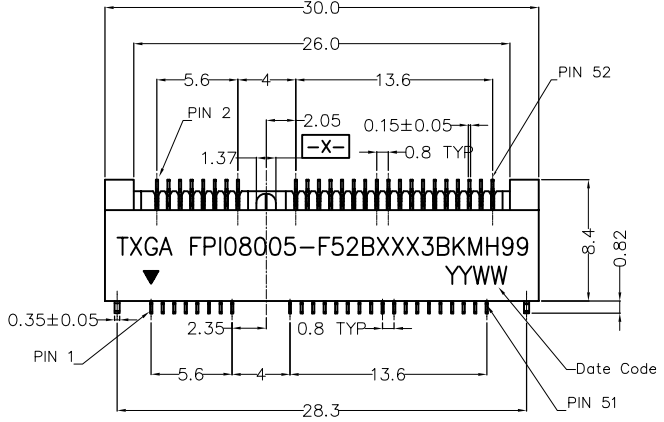


REV	LOCATIONS	DESCRIPTION	DATE	REVISER	APPD



SPECIFICATIONS

Electrical
 Current Rating: 0.5A AC(rms)/DC
 Voltage Rating: 50V AC(rms)/DC
 Contact Resistance: 55mΩ Max
 Insulation Resistance: 500MΩ Min
 Withstanding Voltage: 300V AC r.m.s
 Temperature Range-Operating: -40°C ~ +80°C

Material
 Housing: LCP (UL 94V-0) Black
 Contact: Copper Alloy/ Selected gold plated on contact area,
 1u" Min. gold plated on solder tails
 Pegs: Copper Alloy/ 120u" Min. Matte Tin Plated

Ordering Information

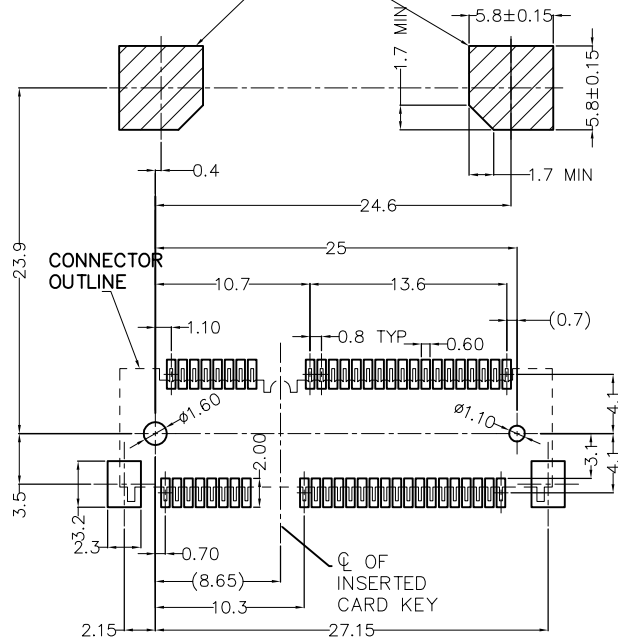
FPI 080 05 - F 52 B 1 XX 3 BK M H99
 1 2 3 4 5 6 7 8 9 10 11 12

1 Category FPI-MINI PCI	2 Series Number 080-Pitch0.80mm	3 Distinction No. 05	4 Type F-Female	5 Circuits 52	6 Entry Angle B-90° Angle	7 Plating 1-Gold Plated
8 thickness of Gold Plating 00-Gold Flash 10-10u" 30-30u"	9 Material-Resin 3-LCP	10 Color-Resin BK-Black	11 Packaging M-Reel	12 Connector Height(H) H99-9.9mm		

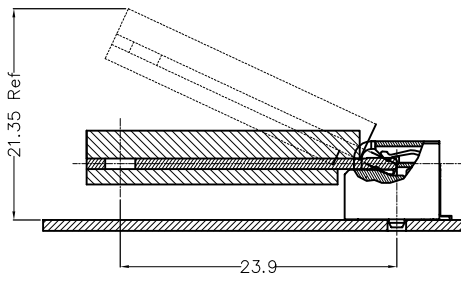
 THIRD ANGLE PROJECTION DESIGN UNITS METRIC(mm) SCALE 5:1 SIZE A4	GENERAL TOLERANCES (UNLESS SPECIFIED)		APPROVE BY LEO	DATE 20/JUL/24	PART NO. FPI08005-F52BXXX3BKM H99	ITEM NO. FPI08005	 Building Technology Cornerstone REV 0 SHEET NO. 1/2
	X. ±0.30	X.* ±5°	CHECKED BY GISELLE	DATE 20/JUL/24	TITLE MINI PCI Express (H9.9mm) Pitch 0.8mm 90° Angle		
	X.X ±0.20	X.X* ±2°	DRAWN BY MATT	DATE 20/JUL/24	THIS DRAWING CONTAINS INFORMATION THAT IS PROPRIETARY TO TXGA INDUSTRIAL ELECTRONICS(S.Z)CO.,LTD AND SHOULD NOT BE USED WITHOUT WRITTEN PERMISSION		

REV	LOCATIONS	DESCRIPTION	DATE	REVISER	APPD

COMPONENT KEEP OUT AREA FOR
CARD HOLD DOWN SOLUTION

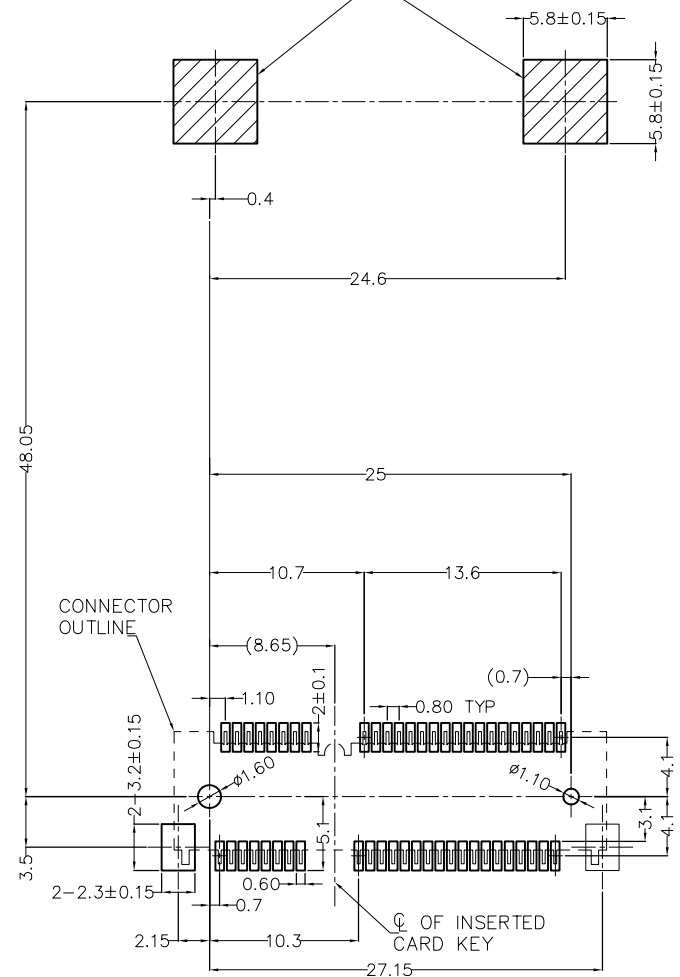


Recommended P.C.Board Layout For Half Card
General tolerances: ±0.05mm

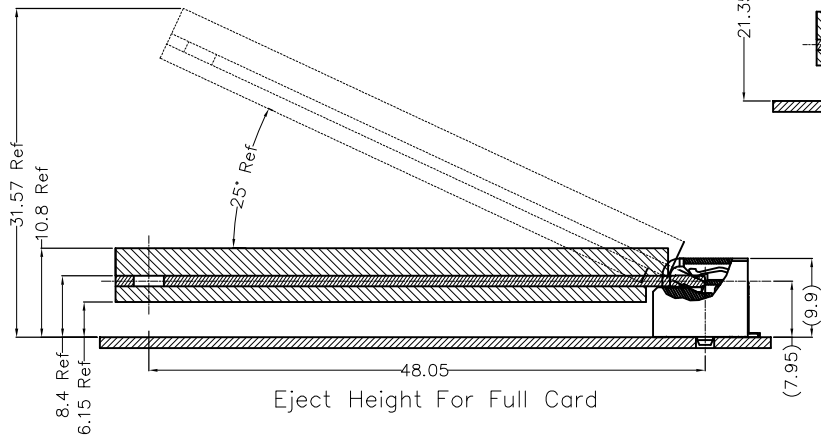


Eject Height For Half Card

COMPONENT KEEP OUT AREA FOR
CARD HOLD DOWN SOLUTION



Recommended P.C.Board Layout For Full Card
General tolerances: ±0.05mm



Eject Height For Full Card

 THIRD ANGLE PROJECTION	GENERAL TOLERANCES (UNLESS SPECIFIED)		APPROVE BY LEO	DATE 20/JUL/24	PART NO. FPI08005-F52BXXX3BKM99	ITEM NO. FPI08005	 Building Technology Cornerstone	
	X. ±0.30	X.* ±5°	CHECKED BY GISELLE	DATE 20/JUL/24	TITLE MINI PCI Express (H9.9mm) Pitch 0.8mm 90° Angle			REV 0
	DESIGN UNITS METRIC(mm)	X.X ±0.20	X.XX* ±2°	DRAWN BY MATT	DATE 20/JUL/24	THIS DRAWING CONTAINS INFORMATION THAT IS PROPRIETARY TO TXGA INDUSTRIAL ELECTRONICS(S.Z)CO.,LTD AND SHOULD NOT BE USED WITHOUT WRITTEN PERMISSION		SHEET NO. 2/2
	SCALE 5:1	SIZE A4	X.XX ±0.15	X.XX* ±1°				
		X.XXX ±0.10	X.XXX* ±0.5°					