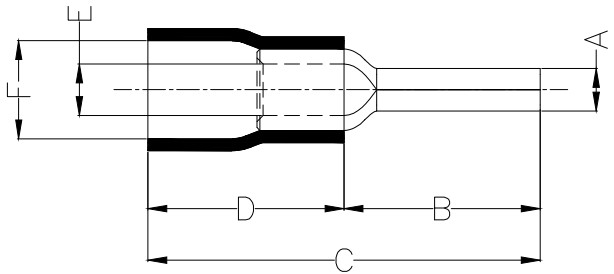
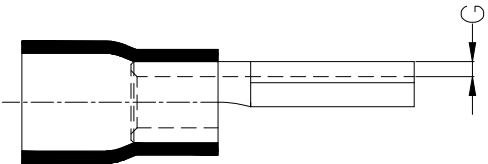


1 2 3 4 5 6 7 8

REV	LOCATIONS	DESCRIPTION	DATE	REVISER	APPD

Notes:

Material: Copper
 Insulator: PVC (UL 94V-0) Yellow
 Plating: Matte tin plated
 Wire range: 4~6mm² / (12~10AWG)
 Temperature Range-Operating: 0°C~75°C
 Maximum electrical rating: 600V
 Max current: 48A



Dimensions						
A	B	C	D	E	F	G
±0.5	±1	±1	±1	±0.5	±0.5	±0.05
2.8	13.0	26.6	13.6	3.4	6.3	1.0

<p>THIRD ANGLE PROJECTION</p>	GENERAL TOLERANCES (UNLESS SPECIFIED)		APPROVE BY	DATE	PART NO.	ITEM NO.	<p>Building Technology Cornerstone</p>	
	X. ±0.30	X.* ±5'	LEO	18/JAN/21	FPT02-005501300AYE2	FPT02		
	X.X ±0.20	X.X' ±2'	CHECKED BY	DATE	TITLE	REV 0		SHEET NO. 1/1
	X.XX ±0.15	X.XX' ±1'	GISELLE	18/JAN/21	Wire pin terminal			
SCALE	SIZE	X.XXX ±0.10	X.XXX' ±0.5'	DRAWN BY	DATE	THIS DRAWING CONTAINS INFORMATION THAT IS PROPRIETARY TO TXGA INDUSTRIAL ELECTRONICS(S.Z)CO.,LTD AND SHOULD NOT BE USED WITHOUT WRITTEN PERMISSION		
5:1	A4			PYD	18/JAN/21			

1 2 3 4 5 6 7 8

A
B
C
D
E
F

A
B
C
D
E
F