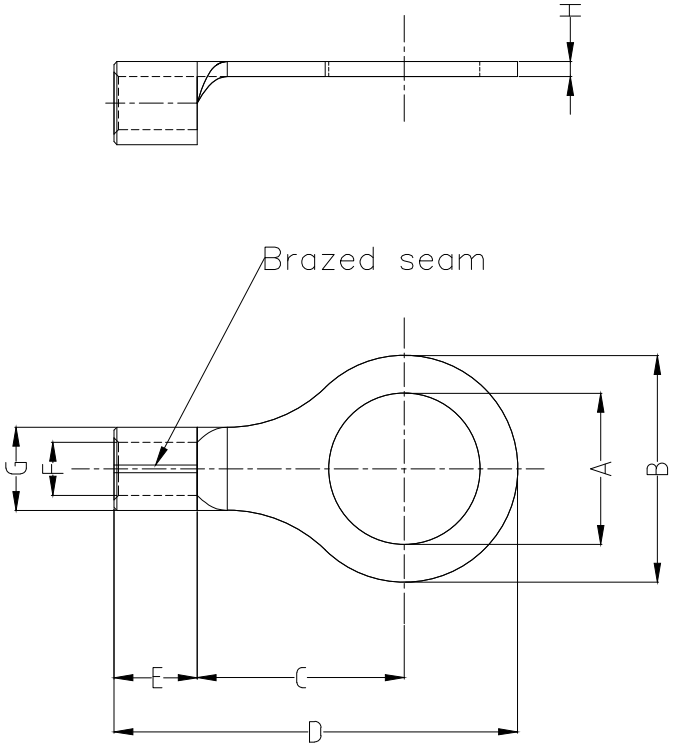


1 2 3 4 5 6 7 8

REV	LOCATIONS	DESCRIPTION	DATE	REVISER	APPD

Notes:

Material: Copper
 Plating: Matte tin plated
 Wire range: 1.5~2.5mm² / (16~14AWG)
 Applicable screw: #8 UNC
 Max current: 27A



Dimensions							
A	B	C	D	E	F	G	H
±0.3	±0.5	±1	±1	±1	±0.5	±0.5	±0.05
4.3	6.6	6.3	14.5	4.8	2.2	4.0	0.8

<p>THIRD ANGLE PROJECTION</p>	GENERAL TOLERANCES (UNLESS SPECIFIED)		APPROVE BY	DATE	PART NO.	ITEM NO.	<p>Building Technology Cornerstone</p>
	X. ±0.30	X.* ±5'	LEO	09/JAN/21	FRT01-00200040SB0N2	FRT01	
	DESIGN UNITS mm		CHECKED BY	DATE	TITLE		
	X.X ±0.20	X.X' ±2'	GISELLE	09/JAN/21	Ring tongue terminal		
SCALE	SIZE	X.XX ±0.15	X.XX' ±1'	DRAWN BY	DATE	THIS DRAWING CONTAINS INFORMATION THAT IS PROPRIETARY TO TXGA INDUSTRIAL ELECTRONICS(S.Z)CO.,LTD AND SHOULD NOT BE USED WITHOUT WRITTEN PERMISSION	
5:1	A4	X.XXX ±0.10	X.XXX' ±0.5'	PYD	09/JAN/21	REV 0	SHEET NO. 1/1

1 2 3 4 5 6 7 8

A
B
C
D
E
F

A
B
C
D
E
F