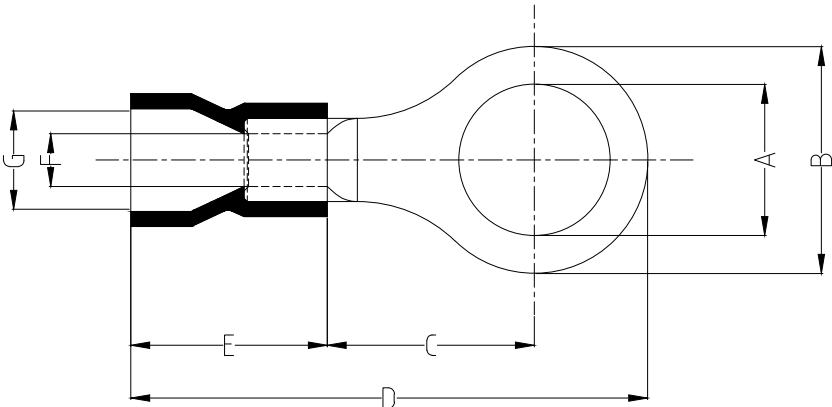
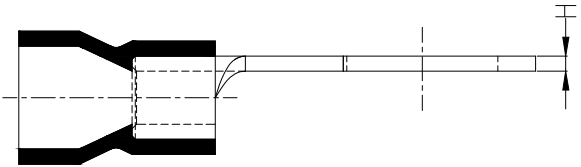


1 2 3 4 5 6 7 8

REV	LOCATIONS	DESCRIPTION	DATE	REVISER	APPD

Notes:

Material: Copper
 Insulator: PVC (UL 94V-0) Blue
 Plating: Matte tin plated
 Wire range: 1.5~2.5mm² / (16~14AWG)
 Applicable screw: #6 UNC
 Temperature Range-Operating: 0°C~75°C
 Maximum electrical rating: 600V
 Max current: 27A



Dimensions							
A	B	C	D	E	F	G	H
±0.2	±0.5	±1	±1	±1	±0.5	±0.5	±0.05
3.7	6.6	4.3	17.9	10.0	2.3	4.7	0.8

<p>THIRD ANGLE PROJECTION</p>	GENERAL TOLERANCES (UNLESS SPECIFIED)		APPROVE BY	DATE	PART NO.	ITEM NO.	<p>Building Technology Cornerstone</p>	
	X. ±0.30	X.* ±5'	LEO	09/JAN/21	FRT03-00200035SABU2	FRT03		
	DESIGN UNITS mm	X.X ±0.20	X.X' ±2'	CHECKED BY	DATE	TITLE		REV 0 SHEET NO. 1/1
	SCALE 5:1 SIZE A4	X.XX ±0.15	X.XX' ±1'	GISELLE	09/JAN/21	Ring tongue terminal		
	X.XXX ±0.10	X.XXX' ±0.5'	DRAWN BY	DATE	THIS DRAWING CONTAINS INFORMATION THAT IS PROPRIETARY TO TXGA INDUSTRIAL ELECTRONICS(S.Z)CO.,LTD AND SHOULD NOT BE USED WITHOUT WRITTEN PERMISSION			
			PYD	09/JAN/21				

1 2 3 4 5 6 7 8