

1 2 3 4 5 6 7 8

REV	LOCATIONS	DESCRIPTION	DATE	REVISER	APPD

A

B

C

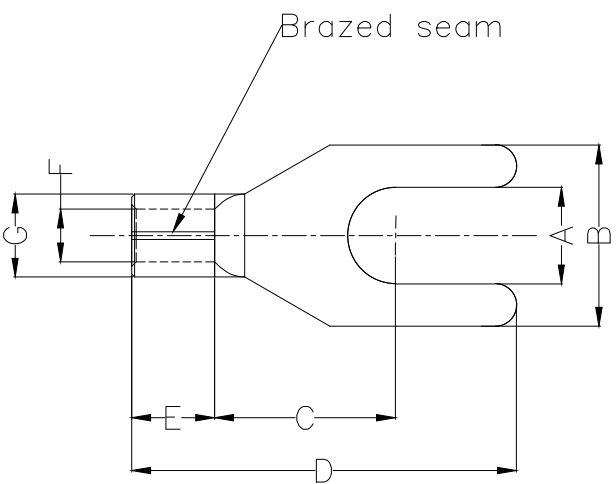
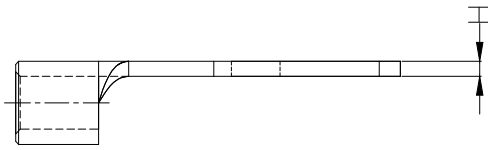
D

E

F

Notes:

Material: Copper  
 Plating: Matte tin plated  
 Wire range: 0.5~1.5mm<sup>2</sup>/ (22~16AWG)  
 Applicable screw: #4 UNC  
 Max current: 19A



Dimensions							
A	B	C	D	E	F	G	H
±0.3	±0.5	±1	±1	±1	±0.5	±0.5	±0.05
3.3	5.7	6.5	16.0	4.8	1.7	3.4	0.7

<p>THIRD ANGLE PROJECTION</p>	GENERAL TOLERANCES (UNLESS SPECIFIED)		APPROVE BY	DATE	PART NO.	ITEM NO.	<p>Building Technology Cornerstone</p>
	X. ±0.30	X.* ±5'	LEO	10/JAN/21	FYT01-001250320B0N2	FYT01	
	X.X ±0.20	X.X' ±2'	CHECKED BY	DATE	TITLE		
	X.XX ±0.15	X.XX' ±1'	GISELLE	10/JAN/21	Spade tongue terminal		
SCALE	SIZE	X.PYD ±0.10	X.PYD' ±0.5'	DRAWN BY	DATE	REV 0 SHEET NO. 1/1	
5:1	A4			PYD	10/JAN/21	THIS DRAWING CONTAINS INFORMATION THAT IS PROPRIETARY TO TXGA INDUSTRIAL ELECTRONICS(S.Z)CO.,LTD AND SHOULD NOT BE USED WITHOUT WRITTEN PERMISSION	

1 2 3 4 5 6 7 8