

1 2 3 4 5 6 7 8

REV	LOCATIONS	DESCRIPTION	DATE	REVISER	APPD

A

B

C

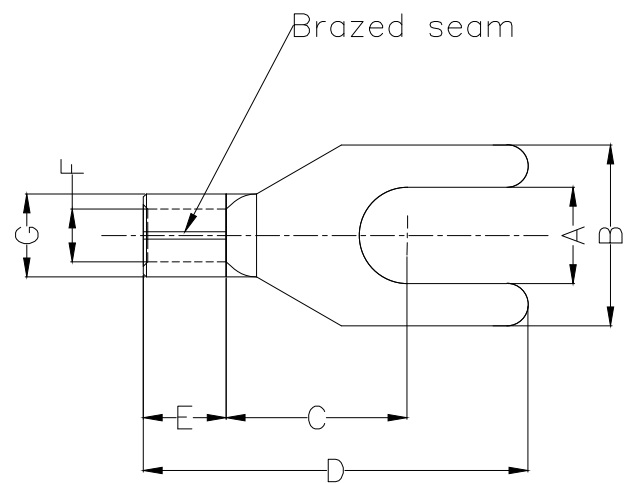
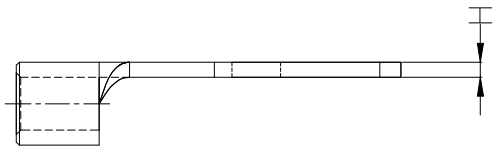
D

E

F

Notes:

Material: Copper
 Plating: Matte tin plated
 Wire range: 4~6mm²/ (12~10AWG)
 Applicable screw: #6 UNC
 Max current: 48A



Dimensions							
A	B	C	D	E	F	G	H
±0.2	±0.5	±1	±1	±1	±0.5	±0.5	±0.05
3.7	8.3	7.5	18.3	7.0	3.5	5.5	1.0

<p>THIRD ANGLE PROJECTION</p>	GENERAL TOLERANCES (UNLESS SPECIFIED)		APPROVE BY	DATE	PART NO.	ITEM NO.	<p>Building Technology Cornerstone</p>
	X. ±0.30	X.* ±5'	LEO	10/JAN/21	FYT01-005500370B0N2	FYT01	
	X.X ±0.20	X.X' ±2'	CHECKED BY	DATE	TITLE		
	X.XX ±0.15	X.XX' ±1'	GISELLE	10/JAN/21	Spade tongue terminal		
SCALE	SIZE	X.PYD ±0.10	X.PYD' ±0.5'	DRAWN BY	DATE	REV 0 SHEET NO. 1/1	
5:1	A4			PYD	10/JAN/21	THIS DRAWING CONTAINS INFORMATION THAT IS PROPRIETARY TO TXGA INDUSTRIAL ELECTRONICS(S.Z)CO.,LTD AND SHOULD NOT BE USED WITHOUT WRITTEN PERMISSION	

1 2 3 4 5 6 7 8