

1 2 3 4 5 6 7 8

REV	LOCATIONS	DESCRIPTION	DATE	REVISER	APPD

A

B

C

D

E

F

A

B

C

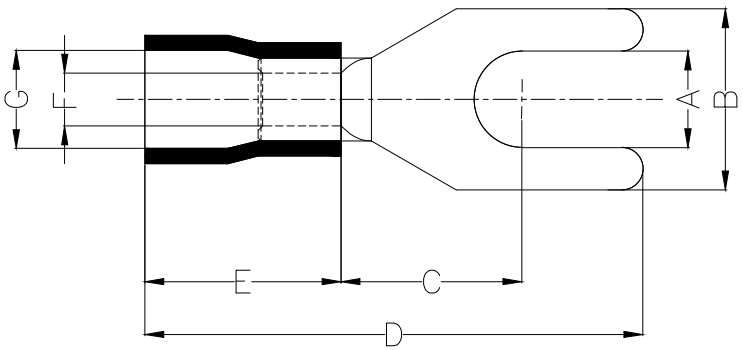
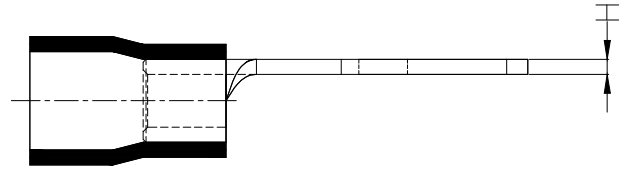
D

E

F

Notes:

- Material: Copper
- Insulator: PVC (UL 94V-0)
- Plating: Matte tin plated
- Wire range: 0.5~1.5mm² / (22~16AWG)
- Applicable screw: #4 UNC
- Temperature Range-Operating: 0°C~75°C
- Maximum electrical rating: 600V
- Max current: 19A



Dimensions							
A	B	C	D	E	F	G	H
±0.2	±0.5	±1	±1	±1	±0.5	±0.5	±0.05
3.2	5.7	6.5	21.5	10.5	1.7	4.4	0.7

PART NO.	Color Of Insulator
FYT02-001250320ARD2	Red
FYT02-001250320ABU2	Blue
FYT02-001250320ABK2	Black

<p>THIRD ANGLE PROJECTION</p>	GENERAL TOLERANCES (UNLESS SPECIFIED)		APPROVE BY	DATE
	X. ±0.30	X.* ±5'	LEO	10/JAN/21
	DESIGN UNITS METRIC(mm)	X.X ±0.20	CHECKED BY	DATE
	SCALE 5:1	X.XX ±0.15	GISELLE	10/JAN/21
	X.PYD ±0.10	X.XX' ±1'	DRAWN BY	DATE
	X.PYD' ±0.5'		PYD	10/JAN/21

PART NO.	ITEM NO.	<p>Building Technology Cornerstone</p>
FYT02-001250320AXX2	FYT02	
TITLE		REV 0
Spade tongue terminal		SHEET NO. 1/1
THIS DRAWING CONTAINS INFORMATION THAT IS PROPRIETARY TO TXGA INDUSTRIAL ELECTRONICS(S.Z)CO.,LTD AND SHOULD NOT BE USED WITHOUT WRITTEN PERMISSION		

1 2 3 4 5 6 7 8