

1 2 3 4 5 6 7 8

REV	LOCATIONS	DESCRIPTION	DATE	REVISER	APPD

A

B

C

D

E

F

A

B

C

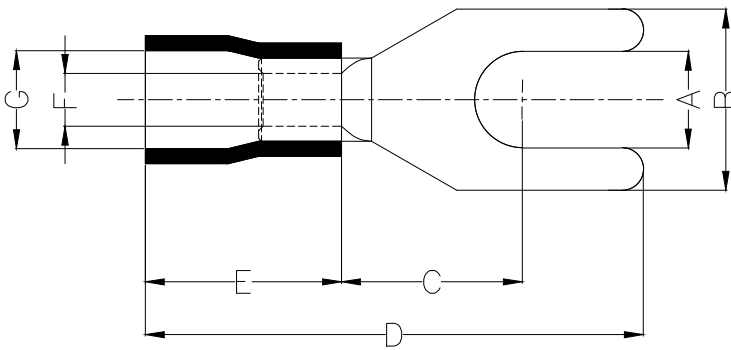
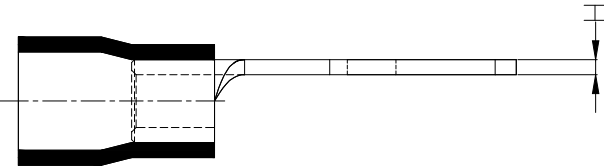
D

E

F

Notes:

Material: Copper
 Insulator: PVC (UL 94V-0)
 Plating: Matte tin plated
 Wire range: 1.5~2.5mm² / (16~14AWG)
 Applicable screw: #8 UNC
 Temperature Range-Operating: 0°C~75°C
 Maximum electrical rating: 600V
 Max current: 27A



Dimensions							
A	B	C	D	E	F	G	H
±0.3	±0.5	±1	±1	±1	±0.5	±0.5	±0.05
4.3	6.4	6.5	21.5	10.5	2.3	4.7	0.8

PART NO.	Color Of Insulator
FYT02-00200040SARD2	Red
FYT02-00200040SABU2	Blue
FYT02-00200040SABK2	Black

 THIRD ANGLE PROJECTION	GENERAL TOLERANCES (UNLESS SPECIFIED)		APPROVE BY	DATE	PART NO.	ITEM NO.
	X. ±0.30	X.* ±5'	LEO	10/JAN/21		
	DESIGN UNITS METRIC(mm)		CHECKED BY	DATE	TITLE	
	X.X ±0.20	X.X' ±2'	GISELLE	10/JAN/21		
SCALE	SIZE	DRAWN BY		DATE	THIS DRAWING CONTAINS INFORMATION THAT IS PROPRIETARY TO TXGA INDUSTRIAL ELECTRONICS(S.Z)CO.,LTD AND SHOULD NOT BE USED WITHOUT WRITTEN PERMISSION	
5:1	A4	PYD		10/JAN/21		

TXGA	
Building Technology Cornerstone	
REV 0	SHEET NO. 1/1

1 2 3 4 5 6 7 8