

1 2 3 4 5 6 7 8

REV	LOCATIONS	DESCRIPTION	DATE	REVISER	APPD

A

B

C

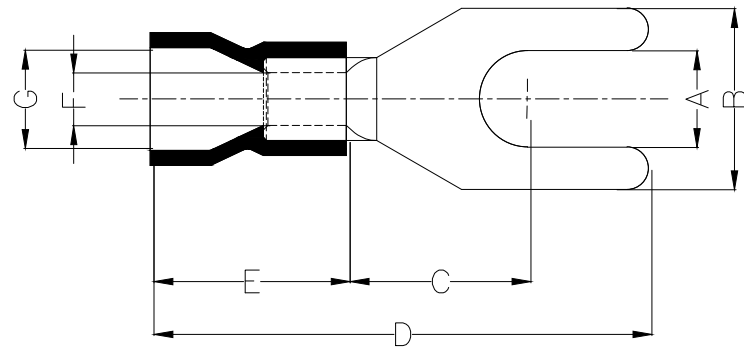
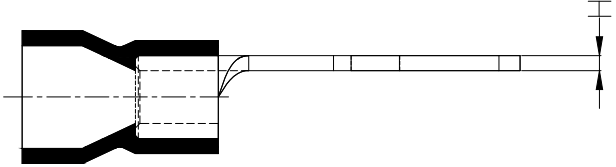
D

E

F

Notes:

Material: Copper
 Insulator: PVC (UL 94V-0) Red
 Plating: Matte tin plated
 Wire range: 0.5~1.5mm²/ (22~16AWG)
 Applicable screw: #4 UNC
 Temperature Range-Operating: 0°C~75°C
 Maximum electrical rating: 600V
 Max current: 19A



Dimensions							
A	B	C	D	E	F	G	H
±0.3	±0.5	±1	±1	±1	±0.5	±0.5	±0.05
3.3	5.7	6.5	21.2	10.0	1.7	4.2	0.7

<p>THIRD ANGLE PROJECTION</p>	GENERAL TOLERANCES (UNLESS SPECIFIED)		APPROVE BY	DATE	PART NO.	ITEM NO.	<p>Building Technology Cornerstone</p>	
	X. ±0.30	X.* ±5'	LEO	10/JAN/21	FYT03-001250320ARD2	FYT03		
	DESIGN UNITS METRIC(mm)		CHECKED BY	DATE	TITLE			REV 0
	X.X ±0.20	X.X' ±2'	GISELLE	10/JAN/21	Spade tongue terminal			SHEET NO. 1/1
SCALE 5:1	SIZE A4	X.XX ±0.15	X.XX' ±1'	DRAWN BY	DATE	THIS DRAWING CONTAINS INFORMATION THAT IS PROPRIETARY TO TXGA INDUSTRIAL ELECTRONICS(S.Z)CO.,LTD AND SHOULD NOT BE USED WITHOUT WRITTEN PERMISSION		
		X.PYD ±0.10	X.PYD' ±0.5'	PYD	10/JAN/21			

1 2 3 4 5 6 7 8