

1 2 3 4 5 6 7 8

| REV | LOCATIONS | DESCRIPTION | DATE | REVISER | APPD |
|-----|-----------|-------------|------|---------|------|
|     |           |             |      |         |      |

A

B

C

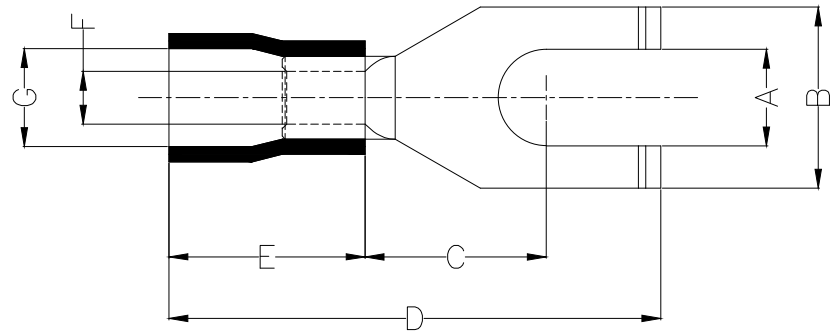
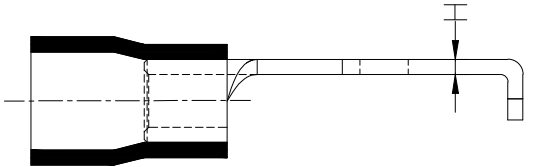
D

E

F

Notes:

Material: Copper  
 Insulator: PVC (UL 94V-0) Blue  
 Plating: Matte tin plated  
 Wire range: 1.5~2.5mm<sup>2</sup>/ (16~14AWG)  
 Applicable screw: #8 UNC  
 Temperature Range—Operating: 0°C~75°C  
 Maximum electrical rating: 600V  
 Max current: 27A



| Dimensions |      |     |      |      |      |      |       |
|------------|------|-----|------|------|------|------|-------|
| A          | B    | C   | D    | E    | F    | G    | H     |
| ±0.3       | ±0.5 | ±1  | ±1   | ±1   | ±0.5 | ±0.5 | ±0.05 |
| 4.3        | 7.6  | 6.2 | 22.0 | 10.6 | 2.3  | 4.8  | 0.8   |

|                               |                                       |             |              |           |                       |  |  |
|-------------------------------|---------------------------------------|-------------|--------------|-----------|-----------------------|--|--|
| <p>THIRD ANGLE PROJECTION</p> | GENERAL TOLERANCES (UNLESS SPECIFIED) |             | APPROVE BY   | DATE      | PART NO.              | ITEM NO.   | <p>Building Technology Cornerstone</p> |
|                               | X. ±0.30                              | X.* ±5'     | LEO          | 10/JAN/21 | FYT06-002000400ABU2   | FYT06  |  |
|                               | X.X ±0.20                             | X.X' ±2'    | CHECKED BY   | DATE      | TITLE                 |  |  |
|                               | X.XX ±0.15                            | X.XX' ±1'   | GISELLE      | 10/JAN/21 | Spade tongue terminal |  |  |
| SCALE                         | SIZE                                  | X.PYD ±0.10 | X.PYD' ±0.5' | DRAWN BY  | DATE                  | THIS DRAWING CONTAINS INFORMATION THAT IS PROPRIETARY TO TXGA INDUSTRIAL ELECTRONICS(S.Z)CO.,LTD AND SHOULD NOT BE USED WITHOUT WRITTEN PERMISSION |  |
| 5:1                           | A4                                    |             |              | PYD       | 10/JAN/21             | REV 0  | SHEET NO. 1/1                          |

1 2 3 4 5 6 7 8