

1 2 3 4 5 6 7 8

REV	LOCATIONS	DESCRIPTION	DATE	REVISER	APPD

A

B

C

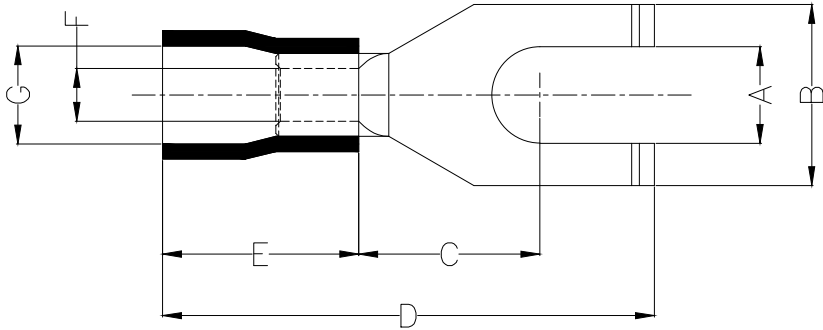
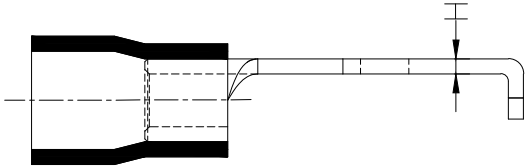
D

E

F

Notes:

- Material: Copper
- Insulator: PVC (UL 94V-0) Yellow
- Plating: Matte tin plated
- Wire range: 4~6mm² / (12~10AWG)
- Applicable screw: #8 UNC
- Temperature Range—Operating: 0°C~75°C
- Maximum electrical rating: 600V
- Max current: 48A



Dimensions							
A	B	C	D	E	F	G	H
±0.3	±0.5	±1	±1	±1	±0.5	±0.5	±0.05
4.3	8.7	7.7	28.1	13.9	3.4	6.2	1.0

<p>THIRD ANGLE PROJECTION</p>	GENERAL TOLERANCES (UNLESS SPECIFIED)		APPROVE BY	DATE	PART NO.	ITEM NO.	<p>Building Technology Cornerstone</p>	
	X. ±0.30	X.* ±5'	LEO	10/JAN/21	FYT06-005500400AYE2	FYT06		
	X.X ±0.20	X.X' ±2'	CHECKED BY	DATE	TITLE	REV 0		SHEET NO. 1/1
	X.XX ±0.15	X.XX' ±1'	GISELLE	10/JAN/21	Spade tongue terminal			
SCALE	SIZE	X.PYD ±0.10	X.PYD' ±0.5'	DRAWN BY	DATE	THIS DRAWING CONTAINS INFORMATION THAT IS PROPRIETARY TO TXGA INDUSTRIAL ELECTRONICS(S.Z)CO.,LTD AND SHOULD NOT BE USED WITHOUT WRITTEN PERMISSION		
5:1	A4			PYD	10/JAN/21			

1 2 3 4 5 6 7 8