

REV	LOCATIONS	DESCRIPTION	DATE	REVISER	APPD

Pin Define

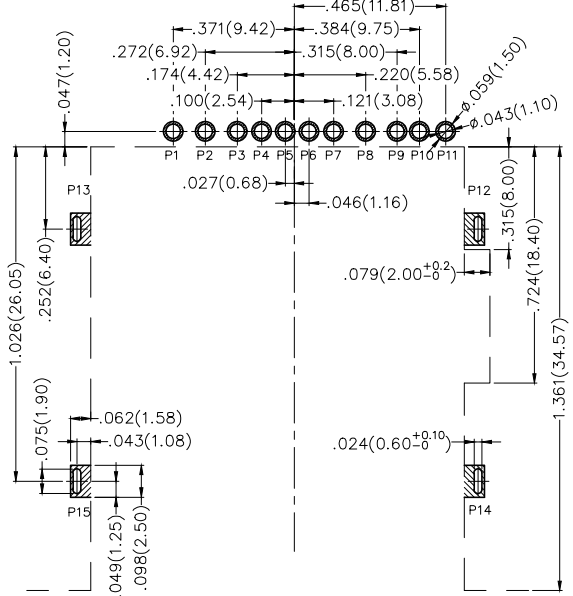
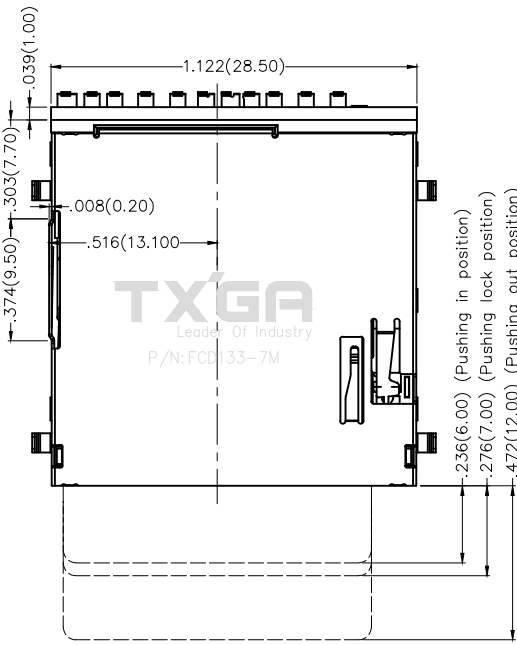
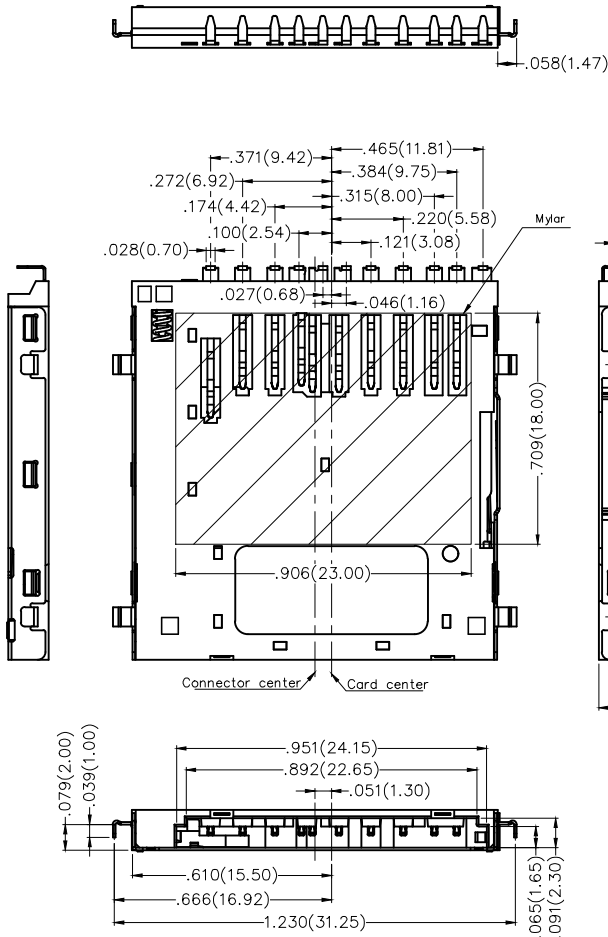
Connector Pin No.	SD Card Pin No.	Pin Define
P1	P9	DAT2
P2	P1	DAT3
P3	P2	CMD
P4		CD
P5	P3	VSS1
P6	P4	VDD
P7	P5	CLK
P8	P6	VSS2
P9	P7	DATO
P10	P8	DAT1
P11		W/P
P12		GND
P13		GND
P14		GND
P15		GND

SPECIFICATIONS

Electrical
 Current Rating: 0.5A AC(rms)/DC
 Voltage Rating: 100V AC(rms)/DC
 Contact Resistance: 100 mΩ Max
 Insulation Resistance: 1000 MΩ Min/DC 250V
 Withstanding Voltage: 500V AC r.m.s
 Temperature Range-Operating: -25°C~+85°C

Material
 Housing: LCP (UL 94V-0) Black
 Contact: Copper alloy
 Shell: Stainless steel

Plating
 Contact: 1μ" gold in contact area, Matte tin on solder area,
 Nickel plated overall
 Shell: Nickel plated overall

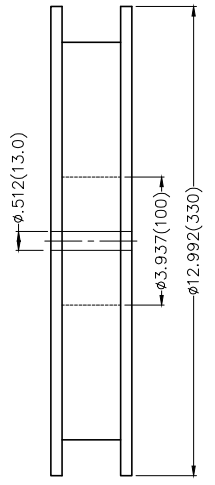
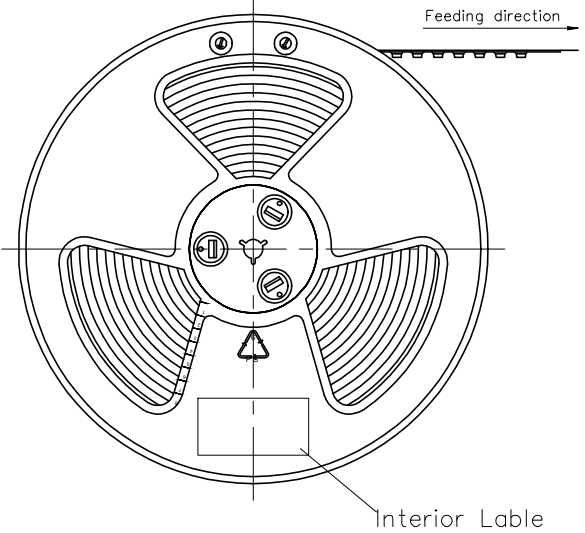


▨ PAD AREA Recommended P.C.Board Layout
 General tolerances: ±.002(0.05)

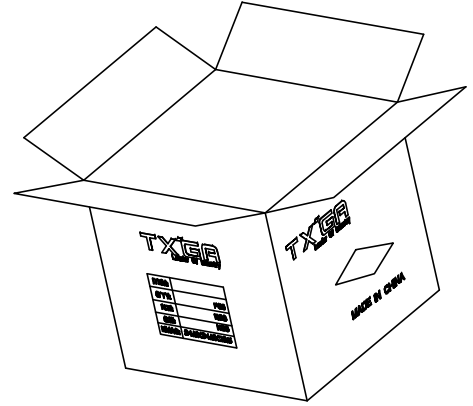
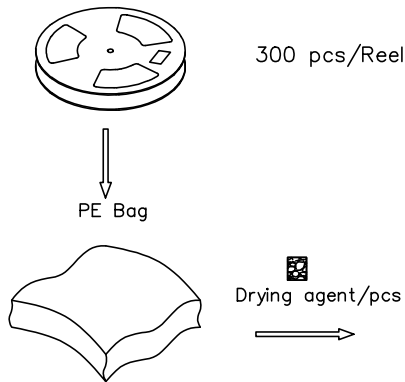
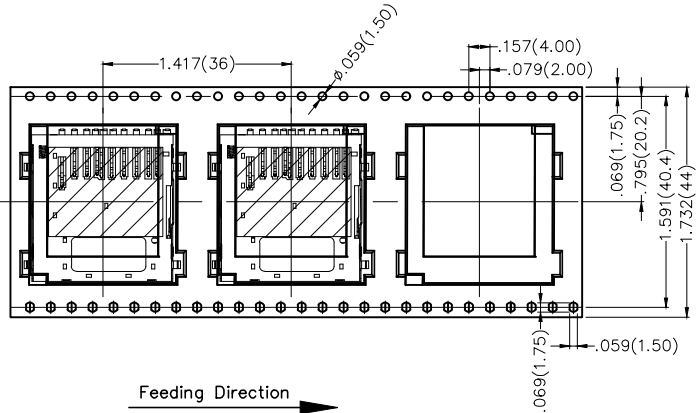
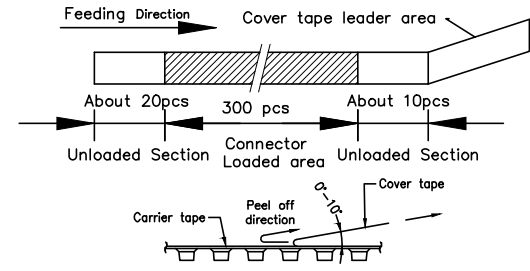
with out card	CD	WP	CD	WP
inserted card (unlock)	CD	WP	CD	WP
inserted card(lock)	CD	WP	CD	WP

THIRD ANGLE PROJECTION		GENERAL TOLERANCES (UNLESS SPECIFIED)		APPROVE BY	DATE	PART NO.	ITEM NO.	TXGA Leader Of Industry
DESIGN UNITS Inch (metric)	SCALE 5:1	SIZE A4	X.±.012(0.30)	X.±5'	FRANK	01/AUG/19	FCD133-7M	
			X.X±.008(0.20)	.X'±2'	CHECKED BY	DATE	TITLE	
			X.XX±.006(0.15)	.XX'±1'	CHERRY	01/AUG/19	SD card connector (H=3.15mm)	
			X.XXX±.004(0.10)	.XXX'±0.5'	DRAWN BY	DATE	THIS DRAWING CONTAINS INFORMATION THAT IS PROPRIETARY TO TXGA INDUSTRIAL ELECTRONICS(S.Z)CO.,LTD AND SHOULD NOT BE USED WITHOUT WRITTEN PERMISSION	
					KATE	01/AUG/19	REV 0	SHEET NO. 1/2

REV	LOCATIONS	DESCRIPTION	DATE	REVISER	APPD



- Note:
1. 10 sprocket hole cumulative tolerance ± 0.2
 2. Carrier camber is within 1.0mm in 100mm
 3. Materlat: White Conductive polystyrene Alloy 100% recyclable
 4. All dimensions meet EIA-481-3 requirements
 5. Component load per 13" reel: 300 pcs



<p>THIRD ANGLE PROJECTION</p>	GENERAL TOLERANCES (UNLESS SPECIFIED)		APPROVE BY FRANK	DATE 01/AUG/19	PART NO. FCD133-7M	ITEM NO. FCD133	<p>Leader Of Industry</p>
	DESIGN UNITS Inch (metric)	X.X \pm .012(0.30)	X. \pm 5'	CHECKED BY CHERRY	DATE 01/AUG/19	TITLE SD card connector (H=3.15mm)	
SCALE 5:1	SIZE A4	X.XX \pm .006(0.15)	.XX \pm 1'	DRAWN BY KATE	DATE 01/AUG/19	THIS DRAWING CONTAINS INFORMATION THAT IS PROPRIETARY TO TXGA INDUSTRIAL ELECTRONICS(S.Z)CO.,LTD AND SHOULD NOT BE USED WITHOUT WRITTEN PERMISSION	
		X.XXX \pm .004(0.10)	.XXX \pm 0.5'			REV 0	SHEET NO. 2/2