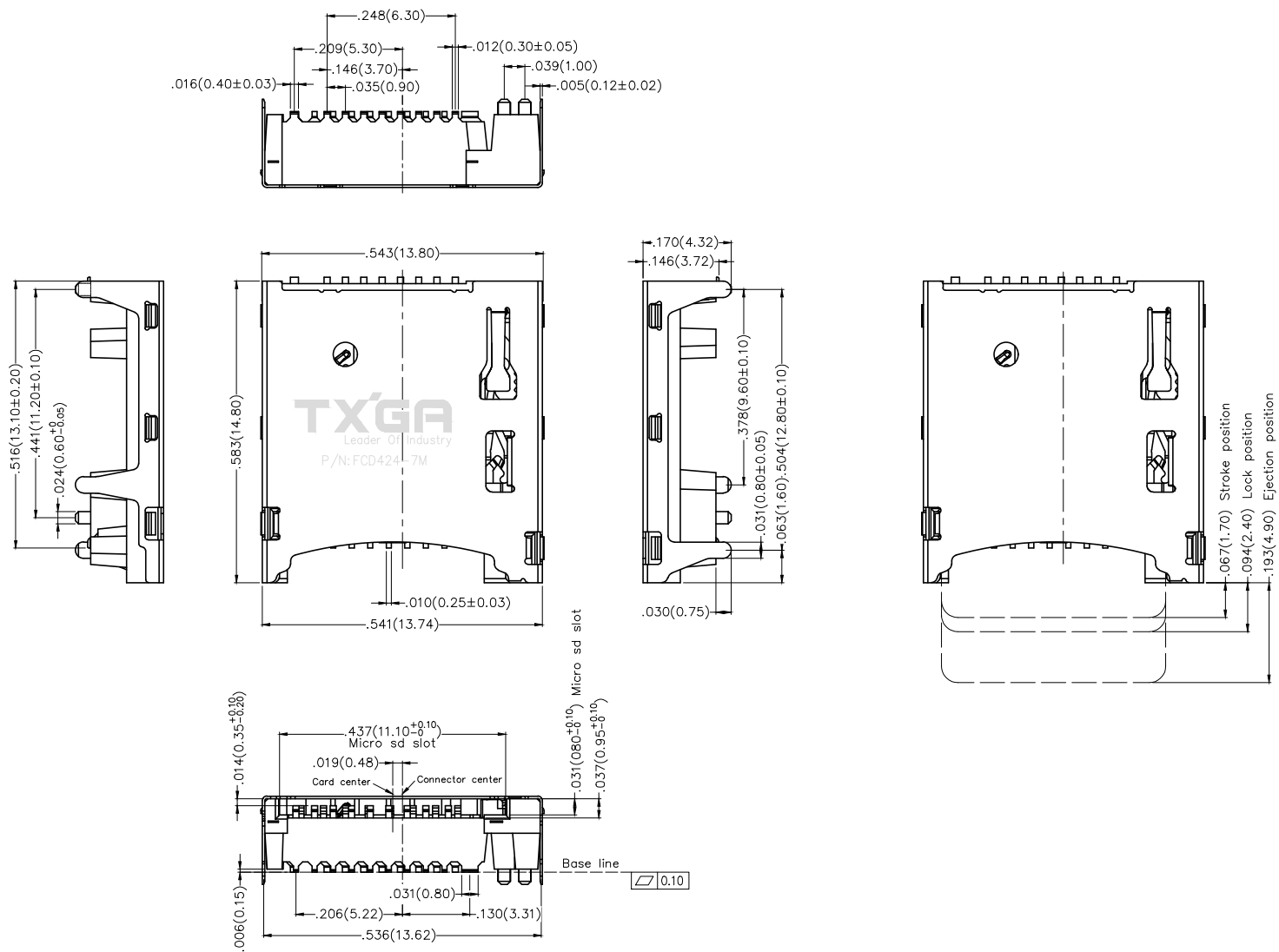


1 2 3 4 5 6 7 8

REV	LOCATIONS	DESCRIPTION	DATE	REVISER	APPD

A
B
C
D
E
F

A
B
C
D
E
F



 THIRD ANGLE PROJECTION	GENERAL TOLERANCES (UNLESS SPECIFIED)		APPROVE BY FRANK	DATE 13/JUL/19	PART NO. FCD424-7M	ITEM NO. FCD424	 Leader Of Industry
	X.±.012(0.30)	X.±5'	CHECKED BY CHERRY	DATE 13/JUL/19	TITLE Micro sd card connector(H=3.72mm)		
DESIGN UNITS Inch (metric)	X.X±.008(0.20)	X.±2'	DRAWN BY KATE	DATE 13/JUL/19	THIS DRAWING CONTAINS INFORMATION THAT IS PROPRIETARY TO TXGA INDUSTRIAL ELECTRONICS(S.Z)CO.,LTD AND SHOULD NOT BE USED WITHOUT WRITTEN PERMISSION		
SCALE 5:1	SIZE A4	X.XX±.006(0.15)					
		X.XXX±.004(0.10)					

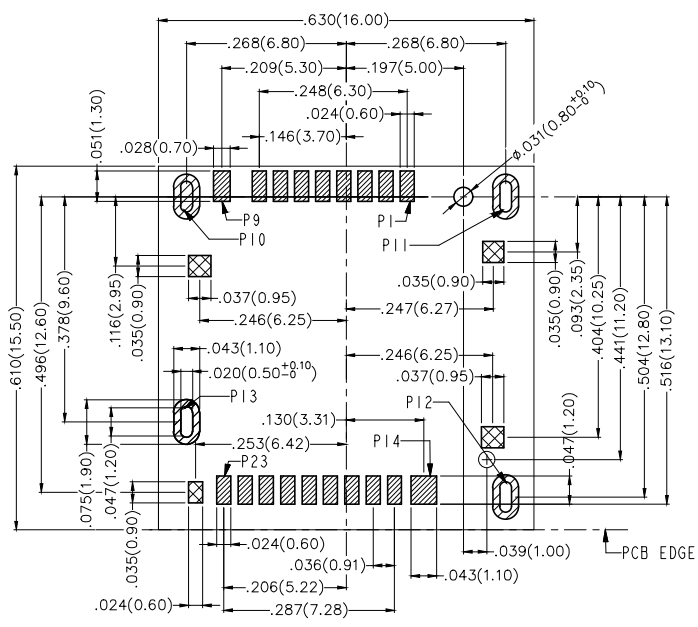
1 2 3 4 5 6 7 8

REV	LOCATIONS	DESCRIPTION	DATE	REVISER	APPD

SPECIFICATIONS

Electrical
 Current Rating: 0.5A AC(rms)/DC
 Voltage Rating: 100V AC(rms)/DC
 Contact Resistance: 100 mΩ Max
 Insulation Resistance: 1000 MΩ Min/DC 250V
 Withstanding Voltage: 500V AC r.m.s
 Temperature Range-Operating: -25°C~+85°C

Material
 Housing: LCP (UL 94V-0) Black
 Contact: Copper alloy
 Shell: Stainless steel
Plating
 Contact: 1μ" gold in contact area, tin in solder area,
 Nickel plated overall
 Shell: 1μ" gold in solder area, Nickel plated overall

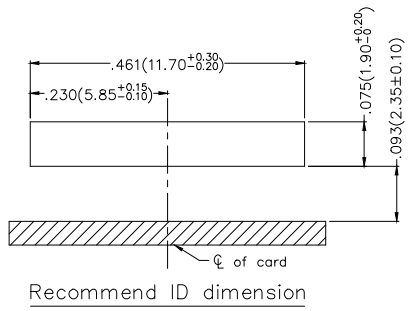


Recommended P.C.Board Layout
 General tolerances: ±.002(0.05)

- Pad area
- Other component keep out area
- Red gluing area

Pin No.	Pin Assignment
PIN1	Micro SD DAT2
PIN2	Micro SD CD/DAT3
PIN3	Micro SD CMD
PIN4	Micro SD VDD1
PIN5	Micro SD CLK
PIN6	Micro SD VSS
PIN7	Micro SD DAT0 RCLK+
PIN8	Micro SD DAT1 PCLK-
PIN9	Micro SD CD
PIN10	GND
PIN11	GND
PIN12	GND
PIN13	GND
PIN14	GND
PIN15	Micro SD VDD2
PIN16	Micro SD SWIO
PIN17	Micro SD VSS
PIN18	Micro SD D0+
PIN19	Micro SD D0-
PIN20	Micro SD VSS
PIN21	Micro SD D1-
PIN22	Micro SD D1+
PIN23	Micro SD VSS

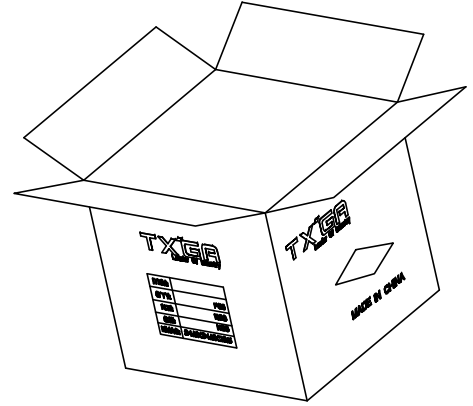
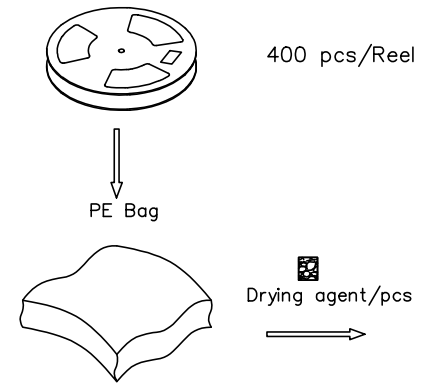
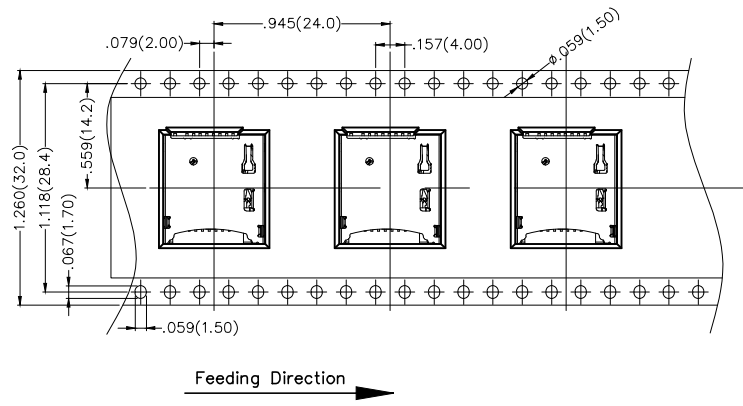
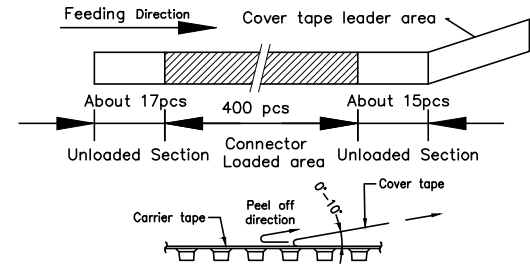
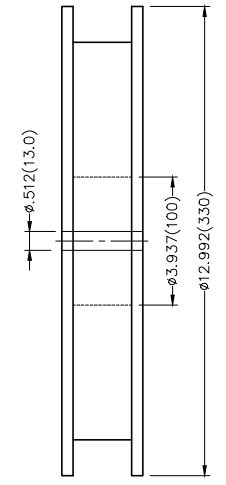
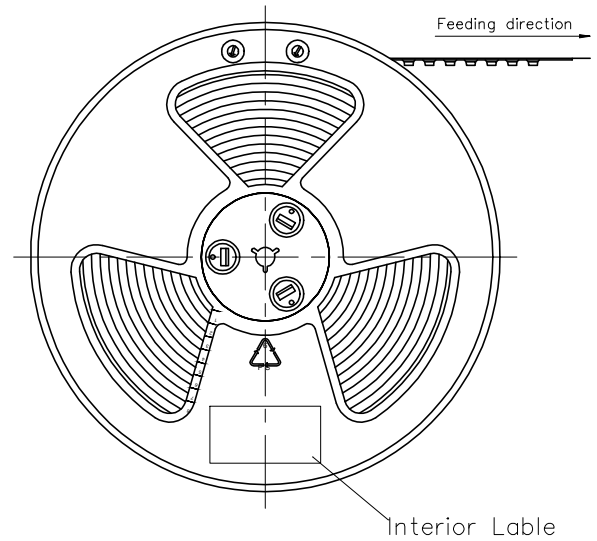
	Card Detect Switch
Card Uninsertion	Open
Card Half Insertion	Open
Card Insertion	Close



 THIRD ANGLE PROJECTION	GENERAL TOLERANCES (UNLESS SPECIFIED)		APPROVE BY FRANK	DATE 13/JUL/19	PART NO. FCD424-7M	ITEM NO. FCD424	 Leader Of Industry
	DESIGN UNITS Inch (metric)	X.±.012(0.30) X.X±.008(0.20) X.XX±.006(0.15) X.XXX±.004(0.10)	X'±5' X'±2' .XX'±1' .XXX'±0.5'	CHECKED BY CHERRY	DATE 13/JUL/19	TITLE Micro sd card connector(H=3.72mm)	
SCALE 5:1	SIZE A4		DRAWN BY KATE	DATE 13/JUL/19	THIS DRAWING CONTAINS INFORMATION THAT IS PROPRIETARY TO TXGA INDUSTRIAL ELECTRONICS(S.Z)CO.,LTD AND SHOULD NOT BE USED WITHOUT WRITTEN PERMISSION		REV 0 SHEET NO. 2/3

REV	LOCATIONS	DESCRIPTION	DATE	REVISER	APPD

- Note:
- 10 sprocket hole cumulative tolerance ± 0.2
 - Carrier camber is within 1.0mm in 100mm
 - Material: White Conductive polystyrene Alloy 100% recyclable
 - All dimensions meet EIA-481-3 requirements
 - Component load per 13" reel: 400 pcs



 THIRD ANGLE PROJECTION	GENERAL TOLERANCES (UNLESS SPECIFIED)		APPROVE BY FRANK	DATE 13/JUL/19	PART NO. FCD424-7M	ITEM NO. FCD424	 Leader Of Industry
	DESIGN UNITS Inch (metric)	X.X \pm .008(0.20)	X.X \pm 2'	CHECKED BY CHERRY	DATE 13/JUL/19	TITLE Micro sd card connector(H=3.72mm)	
SCALE 5:1	SIZE A4	X.XX \pm .006(0.15)	.XX \pm 1'	DRAWN BY KATE	DATE 13/JUL/19	THIS DRAWING CONTAINS INFORMATION THAT IS PROPRIETARY TO TXGA INDUSTRIAL ELECTRONICS(S.Z)CO.,LTD AND SHOULD NOT BE USED WITHOUT WRITTEN PERMISSION	REV 0 SHEET NO. 3/3