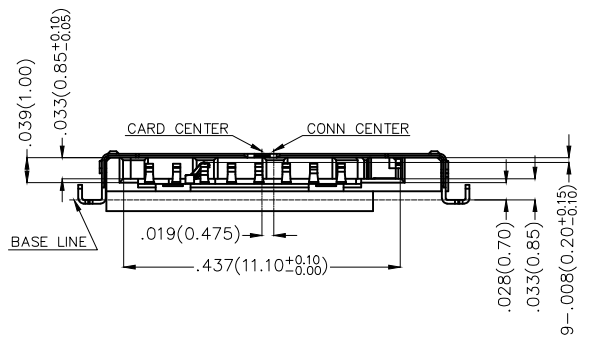
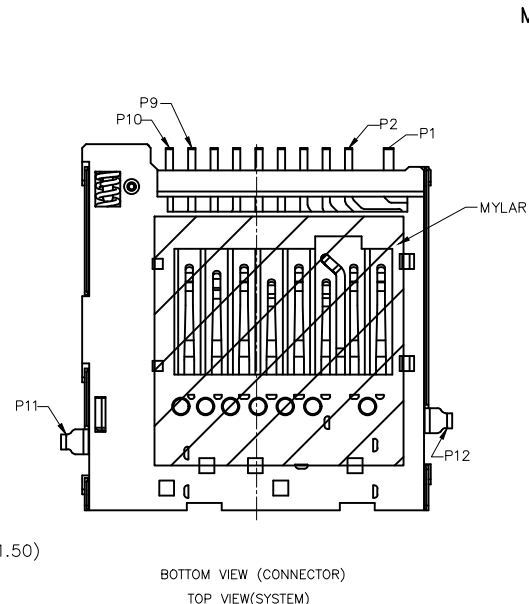
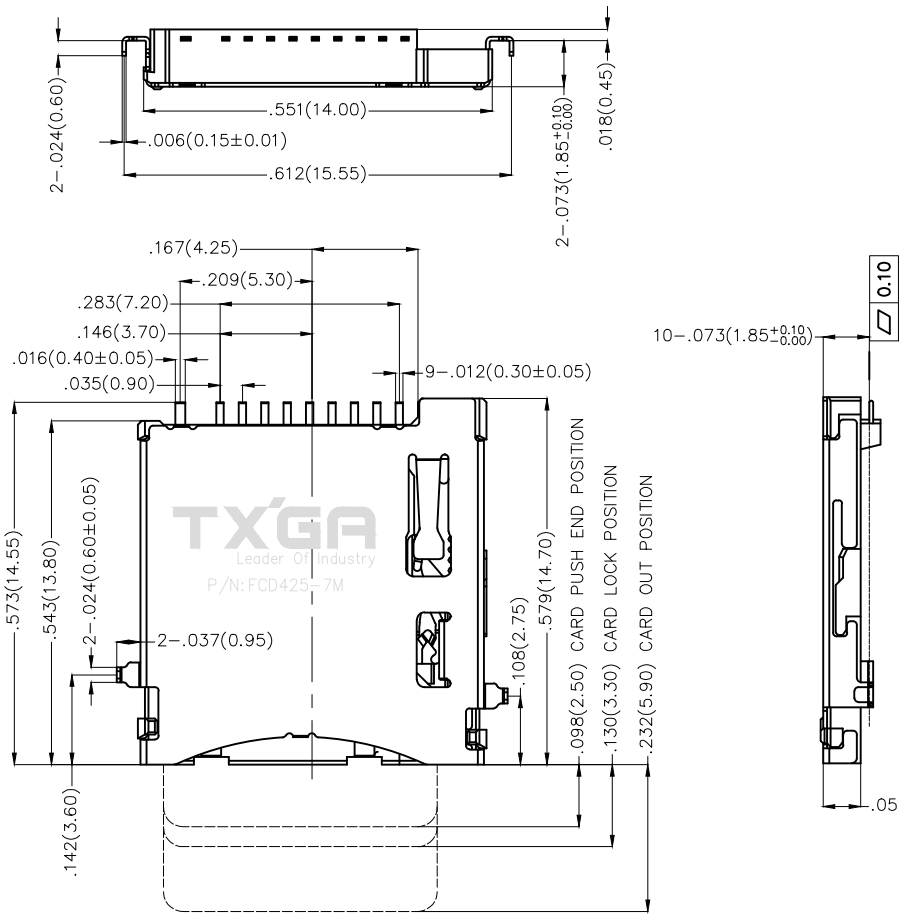


REV	LOCATIONS	DESCRIPTION	DATE	REVISER	APPD

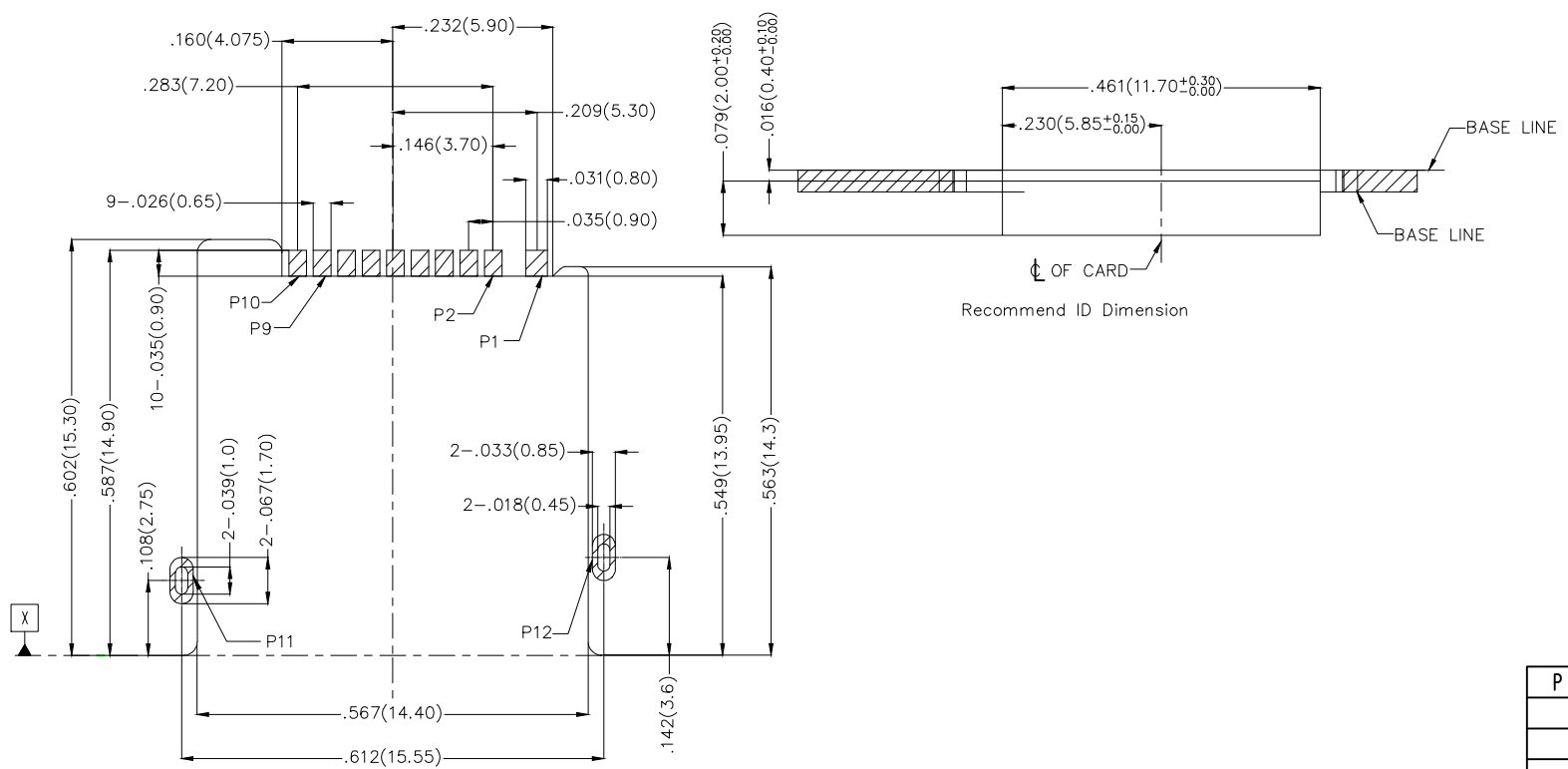
Electrical
 Current Rating: 0.5A AC(rms)/DC
 Voltage Rating: 100V AC(rms)/DC
 Contact Resistance: 100 mΩ Max
 Insulation Resistance: 1000 MΩ MIN
 Withstanding Voltage: 500V AC r.m.s
 Temperature Range—Operating: -25°C~+85°C

Material and Plating
 Housing: LCP UL94 Black Color
 Shell: SUS304 Nickel Plating
 Contact Pin: Gold Plating
 Plating: Selective gold in contact area, Tin on tail.



 THIRD ANGLE PROJECTION	GENERAL TOLERANCES (UNLESS SPECIFIED)		APPROVE BY FRANK	DATE 12/JUL/19	PART NO. FCD425-7M	ITEM NO. FCD425	 Leader Of Industry
	X.±.012(0.30)	X.±5°	CHECKED BY CHERRY	DATE 12/JUL/19	TITLE MICRO SD PUSH (1.85)		
DESIGN UNITS Inch (metric)	X.X±.008(0.20)	X.±2°	DRAWN BY ZOEY	DATE 12/JUL/19	THIS DRAWING CONTAINS INFORMATION THAT IS PROPRIETARY TO TXGA INDUSTRIAL ELECTRONICS(S.Z)CO.,LTD AND SHOULD NOT BE USED WITHOUT WRITTEN PERMISSION		
SCALE 5:1	SIZE A4	X.XX±.006(0.15)	X.XX±1°				
		X.XXX±.004(0.10)	.XXX±0.5°				

REV	LOCATIONS	DESCRIPTION	DATE	REVISER	APPD



Recommended P.C.Board Layout
General tolerances: $\pm .002(0.05)$



Opening/Close of Switch

	Card Detect Switch
Card Uninsertion	Open
Card Half Insertion	Open
Card Insertion	Close
N/O	

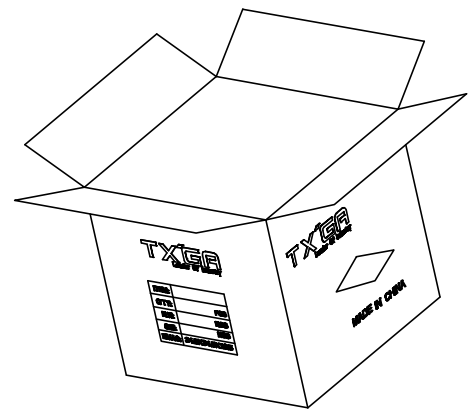
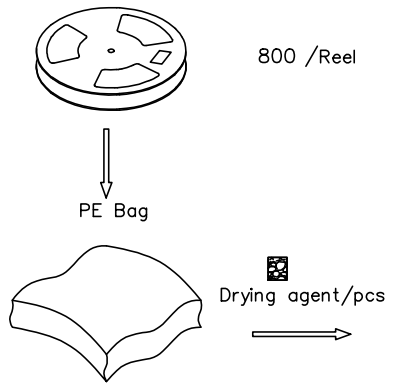
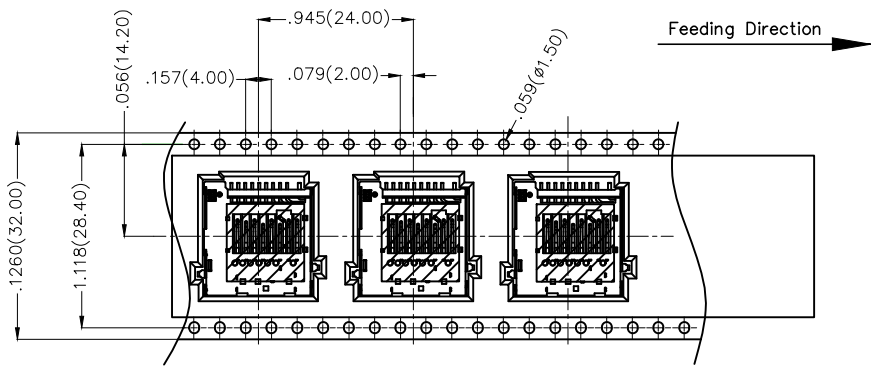
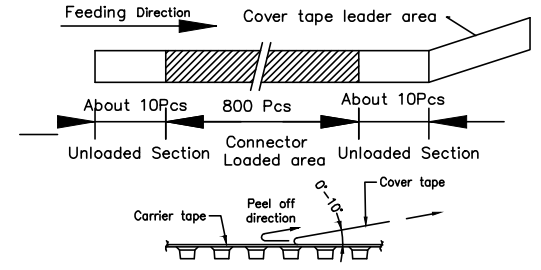
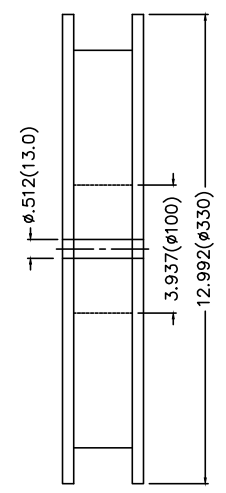
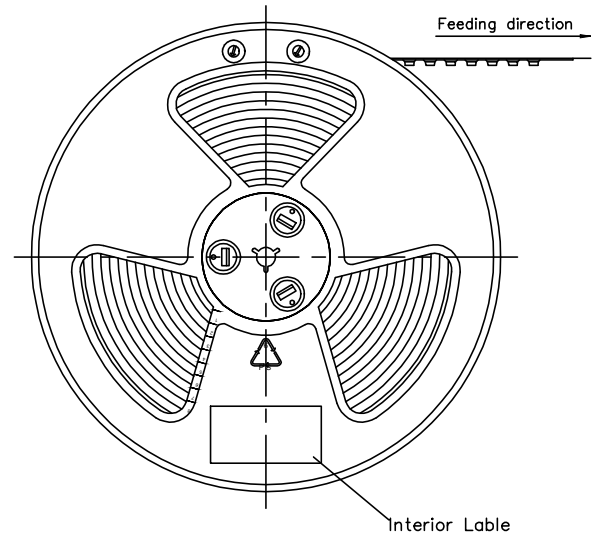
Pin No.	Pin Assignmen
P1	MICRO SD CD
P2	MICRO SD DAT1
P3	MICRO SD DAT0
P4	MICRO SD VSS
P5	MICRO SD CLK
P6	MICRO SD VDD
P7	MICRO SD CMD
P8	MICRO SD CD/DAT3
P9	MICRO SD DAT2
P10	GND
P11	GND
P12	GND

<p>THIRD ANGLE PROJECTION</p>	GENERAL TOLERANCES (UNLESS SPECIFIED)		APPROVE BY	DATE	PART NO.	ITEM NO.	<p>Leader Of Industry</p>
	X.±.012(0.30)	X.±5'	FRANK	12/JUL/19	FCD425-7M	FCD425	
DESIGN UNITS Inch (metric)	X.X±.008(0.20)	.X'±2'	CHECKED BY	DATE	TITLE		REV 0 SHEET NO. 2/3
SCALE 5:1	X.XX±.006(0.15)	.XX'±1'	CHERRY	12/JUL/19	MICRO SD PUSH (1.85)		
SIZE A4	X.XXX±.004(0.10)	.XXX±0.5'	DRAWN BY	DATE	THIS DRAWING CONTAINS INFORMATION THAT IS PROPRIETARY TO TXGA INDUSTRIAL ELECTRONICS(S.Z)CO.,LTD AND SHOULD NOT BE USED WITHOUT WRITTEN PERMISSION		
			ZOEY	12/JUL/19			

REV	LOCATIONS	DESCRIPTION	DATE	REVISED	APPD

Note:

1. 10 sprocket hole cumulative tolerance ± 0.2
2. Carrier camber is within 1.0mm in 100mm
3. Material: White Conductive polystyrene Alloy 100% recyclable
4. All dimensions meet EIA-481-3 requirements
5. Component load per 13" reel: 800pcs



 THIRD ANGLE PROJECTION	GENERAL TOLERANCES (UNLESS SPECIFIED)		APPROVE BY	DATE	PART NO.	ITEM NO.	 Leader Of Industry	
	X. \pm .012(0.30)	X. \pm 5'	FRANK	11/JUL/19	FCD425-7M	FCD425		
	DESIGN UNITS Inch (metric)	X.X \pm .008(0.20)	.X \pm 2'	CHECKED BY	DATE	TITLE		REV 0 SHEET NO. 3/3
	SCALE	X.XX \pm .006(0.15)	.XX \pm 1'	CHERRY	11/JUL/19	MICRO SD PUSH (1.85)		
SIZE	X.XXX \pm .004(0.10)	.XXX \pm 0.5'	DRAWN BY	DATE	THIS DRAWING CONTAINS INFORMATION THAT IS PROPRIETARY TO TXGA INDUSTRIAL ELECTRONICS(S.Z)CO.,LTD AND SHOULD NOT BE USED WITHOUT WRITTEN PERMISSION			
5:1	A4		ZOEY	11/JUL/19				