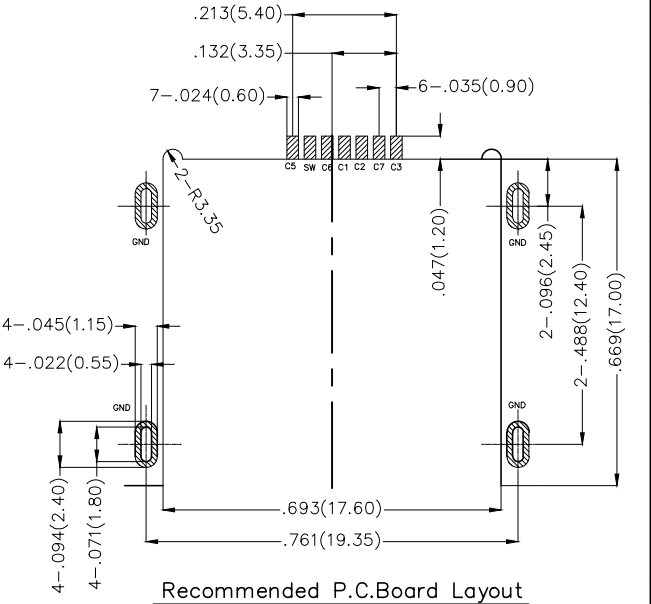
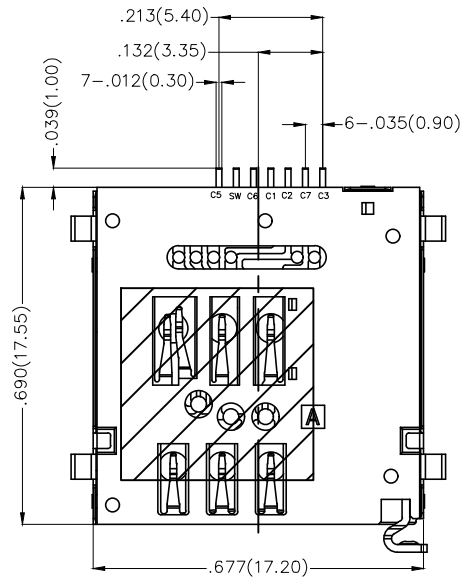
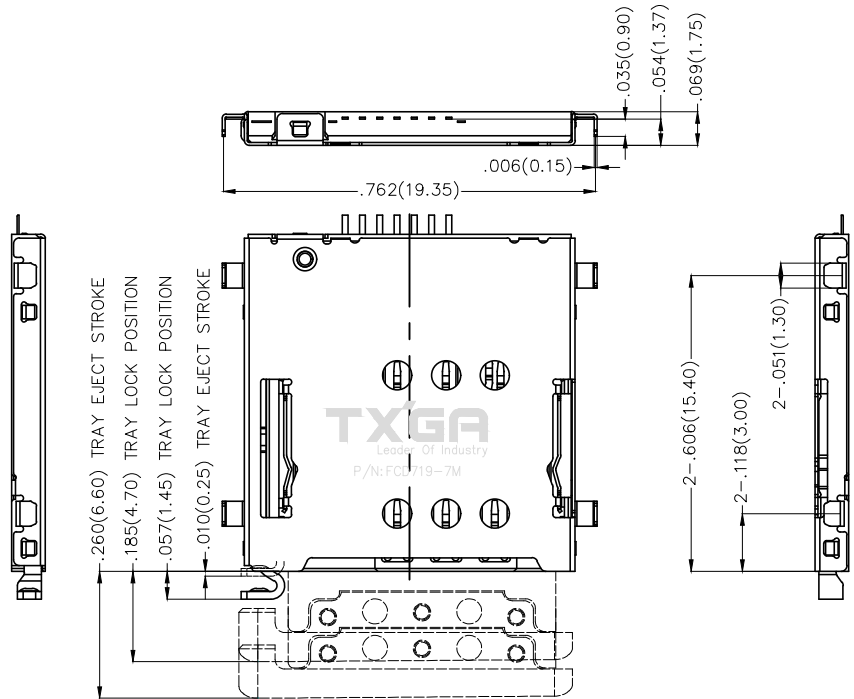


REV	LOCATIONS	DESCRIPTION	DATE	REVISER	APPD
-----	-----------	-------------	------	---------	------



**Recommended P.C.Board Layout**  
General tolerances:  $\pm .002(0.05)$

PAD AREA

**Electrical**

Current Rating: 0.5A AC(rms)/DC  
Voltage Rating: 100V AC(rms)/DC  
Contact Resistance: 100 m  $\Omega$  Max  
Insulation Resistance: 1000 M  $\Omega$  MIN  
Withstanding Voltage: 500V AC r.m.s  
Temperature Range-Operating: -25°C ~ +85°C

**Material**

Housing: LCP (UL 94V-0) Black  
Contact: Phosphor bronze  
Shell: SUS304

**Plating**

Contact: 1 $\mu$ " gold in contact and solder area,  
Nickel plated overall  
Shell: 1 $\mu$ " gold in solder area, Nickel plated overall

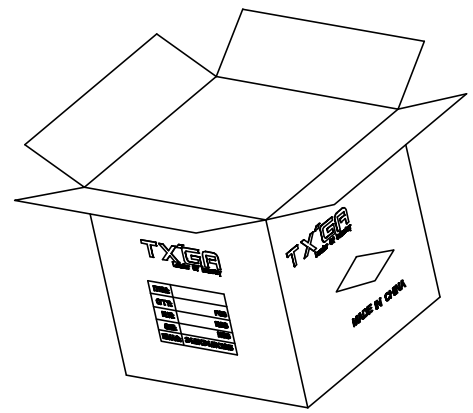
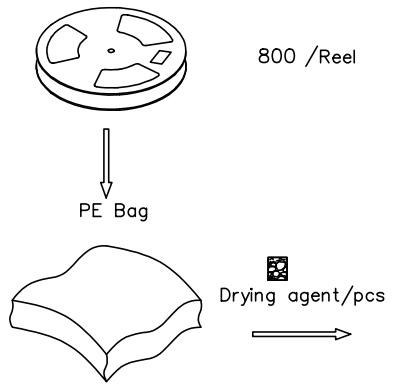
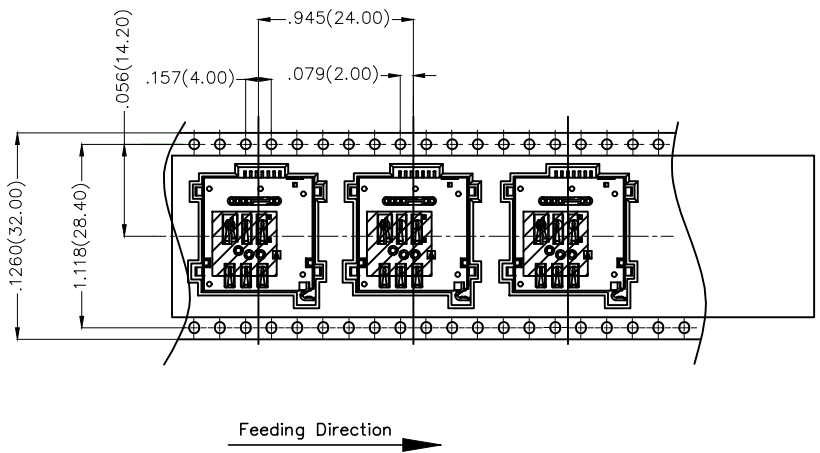
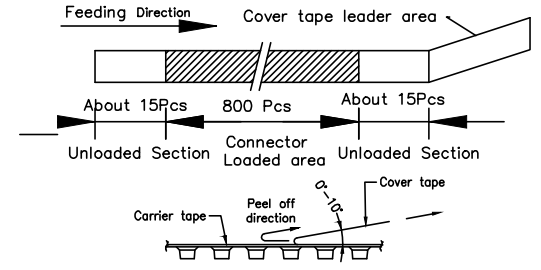
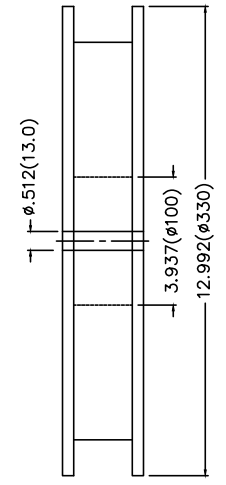
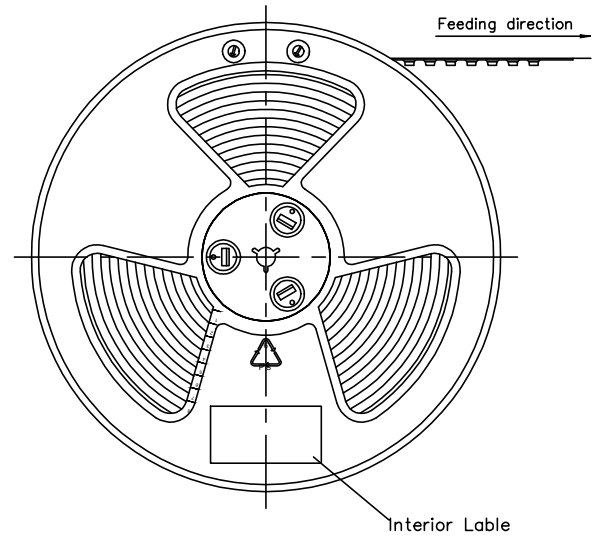
NANO SIM CARD	
C1	Vcc
C2	RST
C3	CLK
C5	GND
SW	CD/SW
C6	Vpp
C7	DATA

COMPOSITION OF DETECTION	
CARD DETECT(SW)	C5
C5	SW
CARD DETECTION/SWITCH	C6
CARD INSTALLATION: ON	C7
NON CARD: OFF	

	GENERAL TOLERANCES (UNLESS SPECIFIED)		APPROVE BY	DATE	PART NO. FCD909-7M	ITEM NO. FCD909	
	X.±.012(0.30)	X.±5°	FRANK	12/JUL/19			
DESIGN UNITS Inch (metric)	X.X±.008(0.20)	X.±2°	CHECKED BY	DATE	TITLE Micro SIM With Tray 1.75mm		REV 0
SCALE	X.XX±.006(0.15)	.XX±1°	CHERRY	12/JUL/19	THIS DRAWING CONTAINS INFORMATION THAT IS PROPRIETARY TO TXGA INDUSTRIAL ELECTRONICS(S,Z)CO.,LTD AND SHOULD NOT BE USED WITHOUT WRITTEN PERMISSION		SHEET NO. 1/2
5:1	X.XXX±.004(0.10)	.XXX±0.5°	DRAWN BY	DATE			
A4			ZOEY	12/JUL/19			

REV	LOCATIONS	DESCRIPTION	DATE	REVISED	APPD

- Note:
- 10 sprocket hole cumulative tolerance  $\pm 0.2$
  - Carrier camber is within 1.0mm in 100mm
  - Material: White Conductive polystyrene Alloy 100% recyclable
  - All dimensions meet EIA-481-3 requirements
  - Component load per 13" reel: 800pcs



 THIRD ANGLE PROJECTION	GENERAL TOLERANCES (UNLESS SPECIFIED)		APPROVE BY	DATE	PART NO.	ITEM NO.	 Leader Of Industry	
	X. $\pm$ .012(0.30)	X. $\pm$ 5'	FRANK	12/JUL/19	FCD909-7M	FCD909		
	DESIGN UNITS	X.X $\pm$ .008(0.20)	.X $\pm$ 2'	CHECKED BY	DATE	TITLE		THIS DRAWING CONTAINS INFORMATION THAT IS PROPRIETARY TO TXGA INDUSTRIAL ELECTRONICS(S.Z)CO.,LTD AND SHOULD NOT BE USED WITHOUT WRITTEN PERMISSION
	Inch (metric)	X.XX $\pm$ .006(0.15)	.XX $\pm$ 1'	CHERRY	12/JUL/19	Micro SIM With Tray 1.75mm		
SCALE	SIZE	X.XXX $\pm$ .004(0.10)	.XXX $\pm$ 0.5'	DRAWN BY	DATE	REV 0 SHEET NO. 2/2		
5:1	A4			ZOEY	12/JUL/19			