

REV	LOCATIONS	DESCRIPTION	DATE	REVISER	APPD

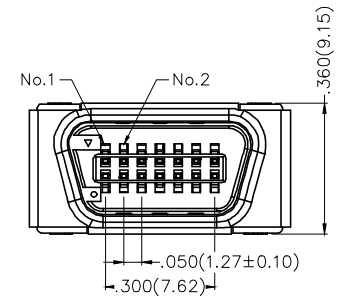
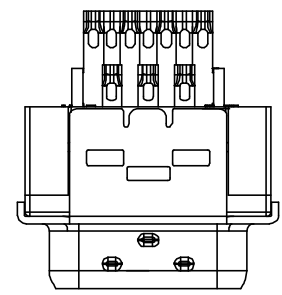
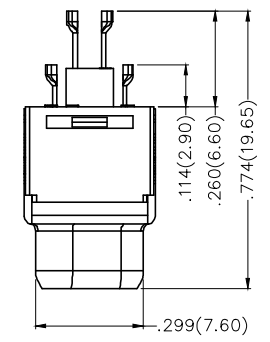
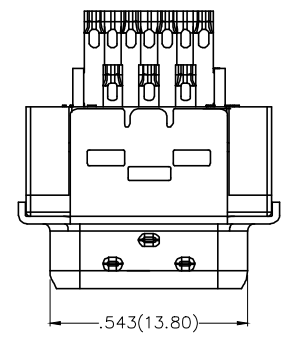
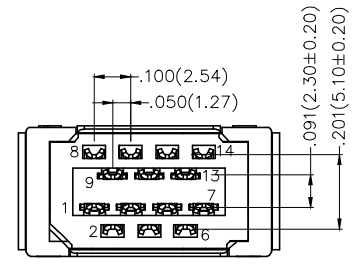
SPECIFICATIONS

Electrical

Current Rating: 1A AC(rms)/DC
Voltage Rating: 40V AC(rms) 500V DC
Contact Resistance: 35 mΩ Max
Insulation Resistance: 200 MΩ Min
Withstanding Voltage: 500V AC r.m.s
Temperature Range-Operating: -25°C~+85°C

Material and Plating

Housing: PBT (UL 94V-0), Black
Contact: Phosphor Bronze/ Selective gold in contact area, tin on tail
Cover: Copper Alloy/ Nickel plated
Shell: SPCC/ Nickel plated



Ordering Information

FCS 14 04 — M0 W S 3 XX K6 K
1 2 3 4 5 6 7 8 9 10

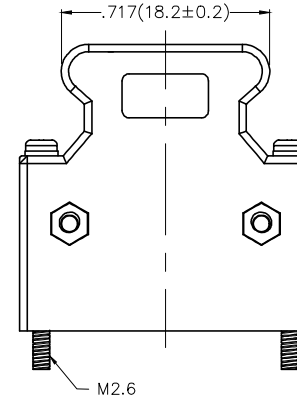
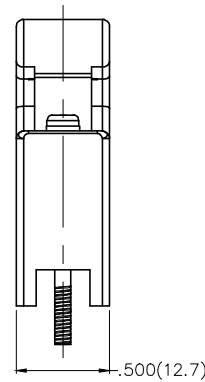
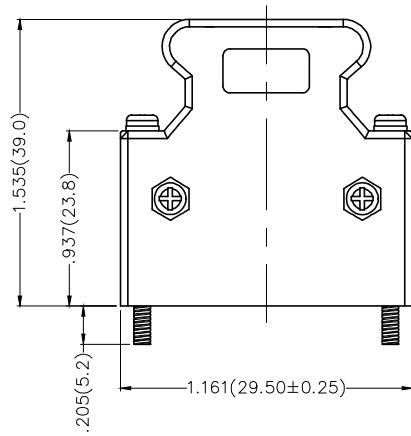
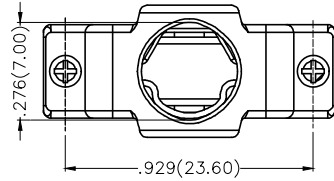
1	Category	2	Circuits	3	Distinction No.	4	Type	5	Assembly Layout	6	Entry Angle
	FCS-SCSI		14		04		M0-Male		W-Welding Type		S-180° Vertical
7	Plating	8	Thickness of Plating	9	Color-Resin	10	Packaging				
	3-Selective gold in contact area, tin on tail		00-Gold flash 03-3μ" Custom plate available		K6-Black		K-Tray				

 THIRD ANGLE PROJECTION	GENERAL TOLERANCES (UNLESS SPECIFIED)		APPROVE BY	DATE	PART NO.	ITEM NO.	 Leader Of Industry		
	X.±.012(0.30)	X'.±5'	FRANK	19/JUL/13	FCS1404-MOWS3XXK6K	FCS1404			
	DESIGN UNITS Inch (metric)	X.X±.008(0.20)	X'.±2'	CHECKED BY	DATE	TITLE		REV 0	SHEET NO. 1/2
	SCALE	SIZE	X.XX±.006(0.15)	CHERRY	19/JUL/13	SCSI Connector Pitch 1.27mm 180° Vertical Male		THIS DRAWING CONTAINS INFORMATION THAT IS PROPRIETARY TO TXGA INDUSTRIAL ELECTRONICS(S.Z)CO.,LTD AND SHOULD NOT BE USED WITHOUT WRITTEN PERMISSION	
5:1	A4	X.XXX±.004(0.10)	KEVIN	19/JUL/13					

REV	LOCATIONS	DESCRIPTION	DATE	REVISER	APPD

Material—Cover

Plastic cover: PBT (UL 94V-0), Black
 Clamp: SPCC



 THIRD ANGLE PROJECTION	GENERAL TOLERANCES (UNLESS SPECIFIED)		APPROVE BY FRANK	DATE 19/JUL/13	PART NO. FCS1404-MOWS3XXK6K	ITEM NO. FCS1404	 Leader Of Industry	
	X ± .012 (0.30)	X . ± 5'	CHECKED BY CHERRY	DATE 19/JUL/13	TITLE SCSI Connector Pitch 1.27mm 180° Vertical Male			REV 0
	DESIGN UNITS Inch (metric)	X.X ± .008 (0.20)	.X' ± 2'	DRAWN BY KEVIN	DATE 19/JUL/13	THIS DRAWING CONTAINS INFORMATION THAT IS PROPRIETARY TO TXGA INDUSTRIAL ELECTRONICS(S.Z)CO.,LTD AND SHOULD NOT BE USED WITHOUT WRITTEN PERMISSION		
SCALE 5:1	SIZE A4	X.XX ± .006 (0.15)	.XX' ± 1'					
		X.XXX ± .004 (0.10)	.XXX' ± 0.5'					