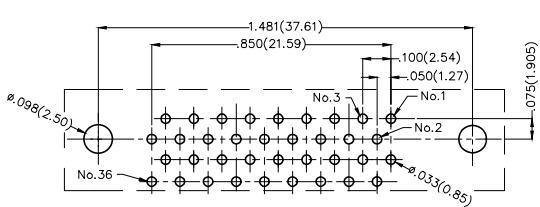
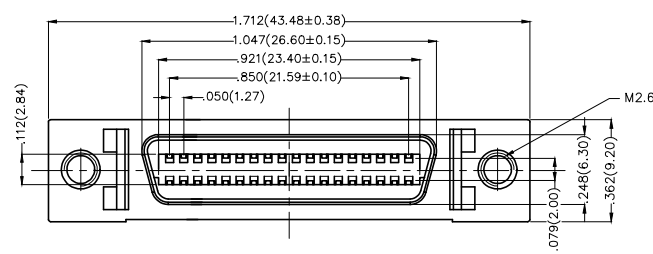
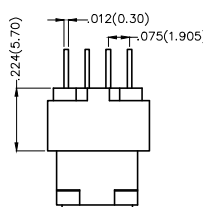
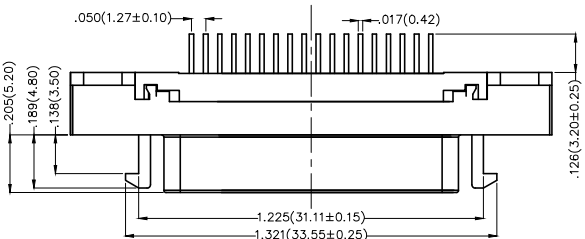
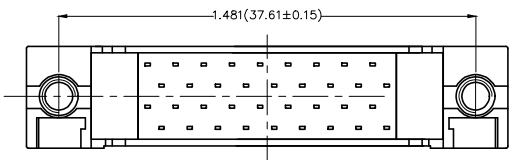


REV	LOCATIONS	DESCRIPTION	DATE	REVISER	APPD



Recommended P.C.Board Layout
General Tolerances: ±0.05mm

SPECIFICATIONS

Electrical
 Current Rating: 1A AC(rms)/DC
 Voltage Rating: 250V AC(rms)/DC
 Contact Resistance: 30 mΩ Max
 Insulation Resistance: 500 MΩ Min
 Withstanding Voltage: 500V AC r.m.s
 Temperature Range—Operating: -55°C~+105°C

Material and Plating
 Housing: PBT (UL 94V-0)
 Contact: Phosphor Bronze
 Contact plating: Selective gold in contact area, tin on tail
 Shell: Zinc Alloy

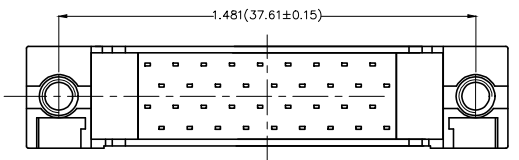
Ordering Information

FCS 36 02 — F0 D S 3 XX K6 K A
 1 2 3 4 5 6 7 8 9 10 11

1	Category FCS-SCSI	2	Circuits 36	3	Distinction No. 02	4	Type F0-Female	5	Assembly Layout D-DIP	6	Entry Angle S-180° Vertical
7	Plating 3-Selective gold in contact area, tin on tail	8	Thickness of Plating 00-Gold flash 03-3μ" Custom plate available	9	Color-Resin K6-Black	10	Packaging K-Tray	11	Distinction Type A-Type A		

<p>THIRD ANGLE PROJECTION</p>	GENERAL TOLERANCES (UNLESS SPECIFIED)		APPROVE BY FRANK	DATE 19/JUL/13	PART NO. FCS3602-F0DS3XXK6KA	ITEM NO. FCS3602	<p>Leader Of Industry</p>	
	DESIGN UNITS Inch (metric)	X.±.012(0.30) X.X±.008(0.20) X.XX±.006(0.15) X.XXX±.004(0.10)	X'.±5' .X'±2' .XX'±1' .XXX'±0.5'	CHECKED BY CHERRY	DATE 19/JUL/13	TITLE SCSI Connector Pitch 1.27mm 180° Vertical Female		REV 0
SCALE 5:1	SIZE A4	DRAWN BY KEVIN		DATE 19/JUL/13	THIS DRAWING CONTAINS INFORMATION THAT IS PROPRIETARY TO TXGA INDUSTRIAL ELECTRONICS(S.Z)CO.,LTD AND SHOULD NOT BE USED WITHOUT WRITTEN PERMISSION			

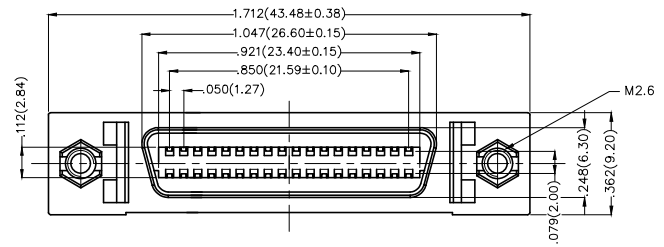
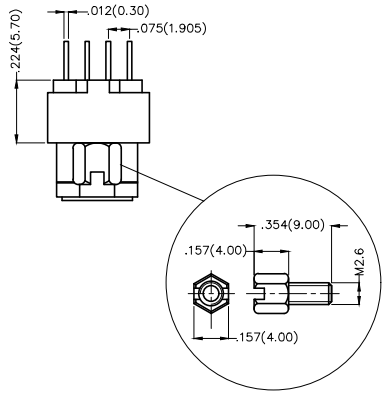
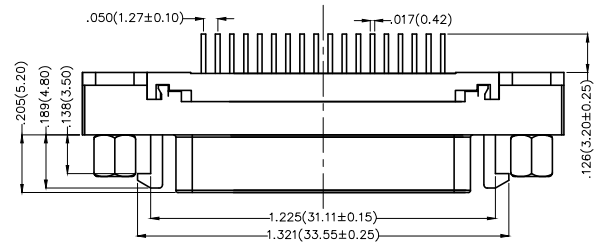
REV	LOCATIONS	DESCRIPTION	DATE	REVISER	APPD



SPECIFICATIONS

Electrical
 Current Rating: 1A AC(rms)/DC
 Voltage Rating: 250V AC(rms)/DC
 Contact Resistance: 30 mΩ Max
 Insulation Resistance: 500 MΩ Min
 Withstanding Voltage: 500V AC r.m.s
 Temperature Range—Operating: -55°C~+105°C

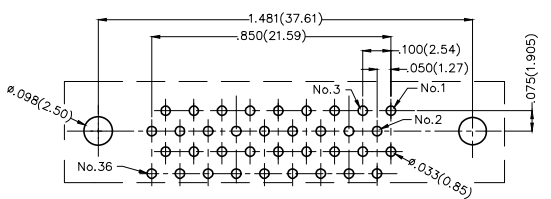
Material and Plating
 Housing: PBT (UL 94V-0)
 Contact: Phosphor Bronze
 Contact plating: Selective gold in contact area, tin on tail
 Shell: Zinc Alloy



Ordering Information

FCS 36 02 — F0 D S 3 XX K6 K B
 1 2 3 4 5 6 7 8 9 10 11

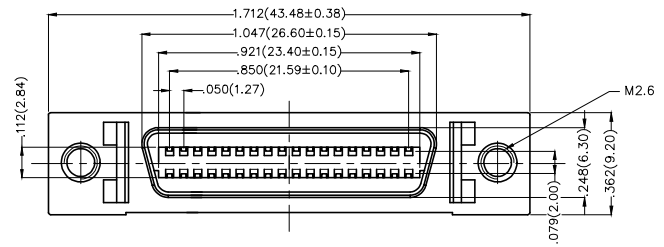
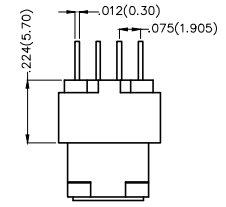
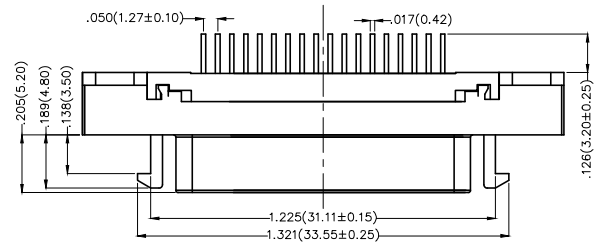
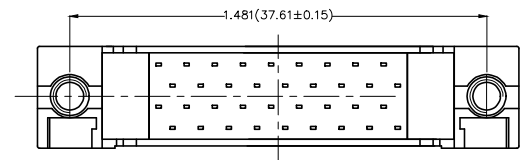
1	Category FCS-SCSI	2	Circuits 36	3	Distinction No. 02	4	Type F0-Female	5	Assembly Layout D-DIP	6	Entry Angle S-180° Vertical
7	Plating 3-Selective gold in contact area, tin on tail		8	Thickness of Plating 00-Gold flash 03-3μ" Custom plate available		9	Color-Resin K6-Black	10	Packaging K-Tray	11	Distinction Type B-Type B



Recommended P.C.Board Layout
 General Tolerances: ±0.05mm

 THIRD ANGLE PROJECTION	GENERAL TOLERANCES (UNLESS SPECIFIED)		APPROVE BY FRANK	DATE 19/JUL/13	PART NO. FCS3602-FODS3XXK6KB	ITEM NO. FCS3602	 Leader Of Industry	
	X.±.012(0.30)	X.'±5'	CHECKED BY CHERRY	DATE 19/JUL/13	TITLE SCSI Connector Pitch 1.27mm 180° Vertical Female			REV 0
	DESIGN UNITS Inch (metric)	X.X±.008(0.20)	X.'±2'	DRAWN BY KEVIN	DATE 19/JUL/13	THIS DRAWING CONTAINS INFORMATION THAT IS PROPRIETARY TO TXGA INDUSTRIAL ELECTRONICS(S.Z)CO.,LTD AND SHOULD NOT BE USED WITHOUT WRITTEN PERMISSION		
	SCALE 5:1	SIZE A4	X.XX±.006(0.15)	X.'±1'	X.XXX±.004(0.10)	X.'±0.5'		

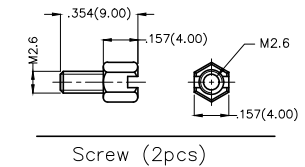
REV	LOCATIONS	DESCRIPTION	DATE	REVISER	APPD



SPECIFICATIONS

Electrical
 Current Rating: 1A AC(rms)/DC
 Voltage Rating: 250V AC(rms)/DC
 Contact Resistance: 30 mΩ Max
 Insulation Resistance: 500 MΩ Min
 Withstanding Voltage: 500V AC r.m.s
 Temperature Range—Operating: -55°C~+105°C

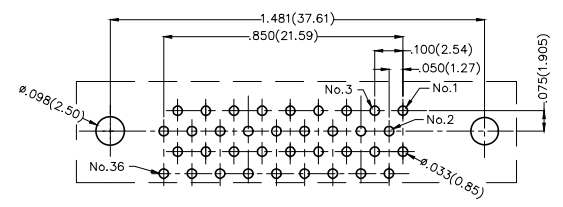
Material and Plating
 Housing: PBT (UL 94V-0)
 Contact: Phosphor Bronze
 Contact plating: Selective gold in contact area, tin on tail
 Shell: Zinc Alloy




Ordering Information

FCS 36 02 — F0 D S 3 XX K6 K C
 1 2 3 4 5 6 7 8 9 10 11

1	Category FCS-SCSI	2	Circuits 36	3	Distinction No. 02	4	Type F0-Female	5	Assembly Layout D-DIP	6	Entry Angle S-180° Vertical
7	Plating 3-Selective gold in contact area, tin on tail	8	Thickness of Plating 00-Gold flash 03-3μ" Custom plate available	9	Color-Resin K6-Black	10	Packaging K-Tray	11	Distinction Type C-Type C		



Recommended P.C.Board Layout
 General Tolerances: ±0.05mm

THIRD ANGLE PROJECTION	GENERAL TOLERANCES (UNLESS SPECIFIED)		APPROVE BY FRANK	DATE 19/JUL/13	PART NO. FCS3602-FODS3XXK6KC	ITEM NO. FCS3602	 Leader Of Industry	
	DESIGN UNITS Inch (metric)	X.±.012(0.30) X.X±.008(0.20) X.XX±.006(0.15) X.XXX±.004(0.10)	X.'±5' X.'±2' X.X'±1' X.XXX±0.5'	CHECKED BY CHERRY	DATE 19/JUL/13	TITLE SCSI Connector Pitch 1.27mm 180° Vertical Female		REV 0
SCALE 5:1	SIZE A4	DRAWN BY KEVIN		DATE 19/JUL/13	THIS DRAWING CONTAINS INFORMATION THAT IS PROPRIETARY TO TXGA INDUSTRIAL ELECTRONICS(S.Z)CO.,LTD AND SHOULD NOT BE USED WITHOUT WRITTEN PERMISSION			