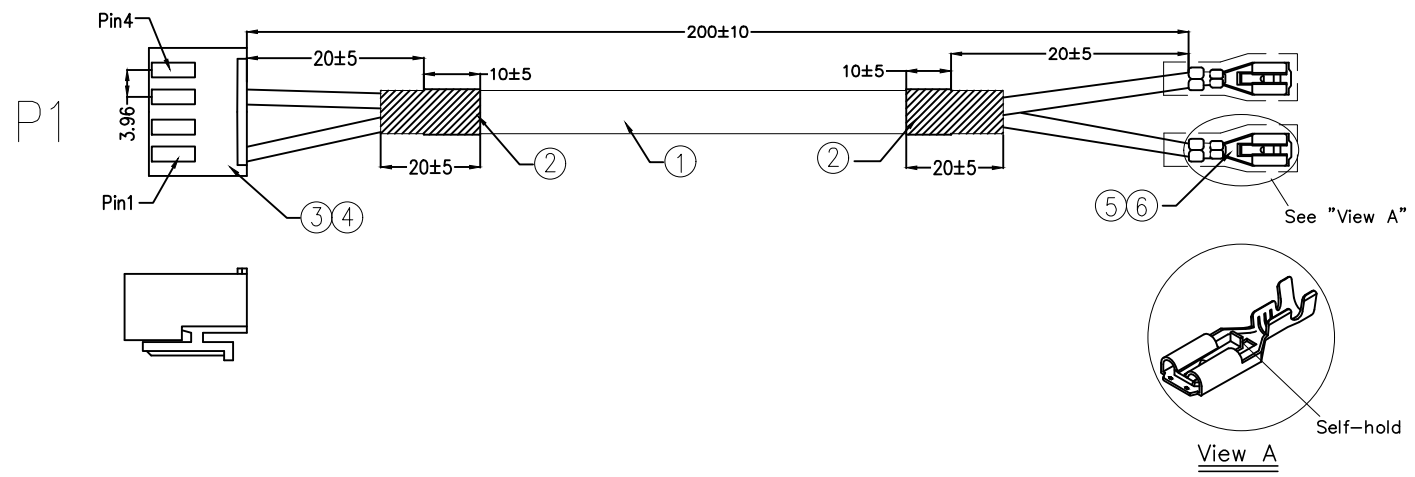


REV	LOCATIONS	DESCRIPTION	DATE	REVISER	APPD



\* Note: All Materials Meet The "RoHs" !

Electrical  
 1. Withstanding Voltage: DC 300V  
 2. Conduction impedance: 3Ω (MAX)  
 3. Insulation Resistance: 10MΩ (MIN)  
 Packing specification  
 50pcs/Bundle, 200pcs/Bag

PIN ASSIGNMENT

P1		
PIN1	————— Brown —————	Type 187 Terminal
PIN2		
PIN3	————— Bule —————	Type 187 Terminal
PIN4		

6	Type 187 Sleeve (Transparent white): R18702-T1
5	Type 187 Terminal: T18709-F2B (Mates with male terminal: 4.75x0.8mm)
4	Wire to board terminal 3.96mm Female(Tin-Plated):T39601-F2H
3	Wire to board housing 3.96mm 4Circuits:HG39601-S04M2W1B
2	Black Heat Shrink Tube Ø8mm:R-4HA-52
1	UL2464 18AWG(34/0.18TS) 2C(Blue/Brown)+AL Jacket Gray (Cool Gray 8U) OD=7.50mm
NO.	Specification

 THIRD ANGLE PROJECTION	GENERAL TOLERANCES (UNLESS SPECIFIED)		APPROVE BY	DATE	PART NO.	ITEM NO.	 Leader Of Industry	
	X. ±0.30	X.* ±5°	FRANK	25/SEP/19	FCW002-000248	FCW002		
DESIGN UNITS Metric	X.X ±0.20	X.X* ±2°	CHECKED BY	DATE	TITLE		REV 0	SHEET NO. 1/1
SCALE 5:1	X.XX ±0.15	X.XX* ±1°	CHERRY	25/SEP/19	Multi-Conductor Cable		THIS DRAWING CONTAINS INFORMATION THAT IS PROPRIETARY TO TXGA INDUSTRIAL ELECTRONICS(S,Z)CO.,LTD AND SHOULD NOT BE USED WITHOUT WRITTEN PERMISSION	
SIZE A4	X.XXX ±0.10	X.XXX* ±0.5°	DRAWN BY	DATE				
			Aubrey	25/SEP/19				