

1 2 3 4 5 6 7 8

REV	LOCATIONS	DESCRIPTION	DATE	REVISED	APPD

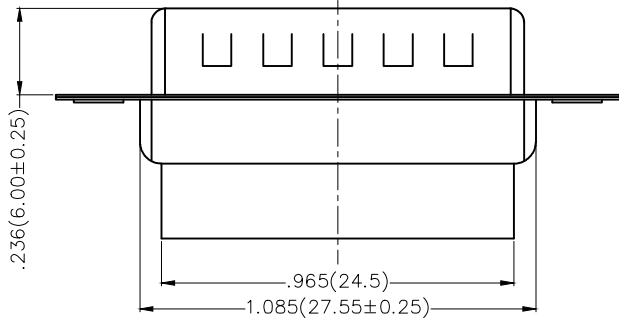
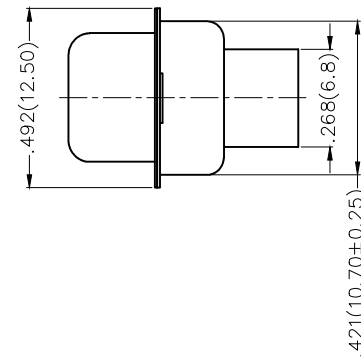
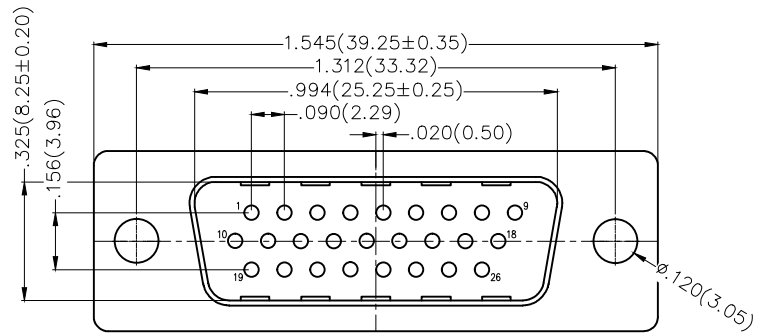
**SPECIFICATIONS**

**Electrical**

Current Rating: 3A AC(rms)/DC  
 Voltage Rating: 250V AC(rms)/DC  
 Contact Resistance: 30 mΩ Max  
 Insulation Resistance: 1000 MΩ MIN  
 Withstanding Voltage: 500V AC r.m.s  
 Temperature Range—Operating: -55°C~+105°C

**Material and Plating**

Housing: PBT (UL 94V-0)  
 Front Shell: Spcc/ Nickel plated  
 Back Shell: Spcc/ Tin plated



**Ordering Information**

FDB 26 37 — M0 T S 0 00 XX K A  
 1 2 3 4 5 6 7 8 9

1   Category FDB- D-SUB	2   Circuits 26	3   Distinction No. 37	4   Type M0—Male	5   Assembly Layout T—Terminal type
6   Entry Angle S—180° Vertical	7   Color—Resin K6—Black U1—Blue	8   Packaging K—Tray	9   Distinction Type A—A Type	

<p>THIRD ANGLE PROJECTION</p>	GENERAL TOLERANCES (UNLESS SPECIFIED)		APPROVE BY FRANK	DATE 28/DEC/18	PART NO. FDB2637—MOTS000XXKA	ITEM NO. FDB2637	<p>Leader Of Industry</p>
	DESIGN UNITS Inch (metric)	X.±.012(0.30)	X.±5'	CHECKED BY CHERRY	DATE 28/DEC/18	TITLE D—SUB Connector 26Circuits Terminal type Male	
SCALE 5:1	SIZE A4	X.XX±.006(0.15)	.XX±1'	DRAWN BY KATE	DATE 28/DEC/18	THIS DRAWING CONTAINS INFORMATION THAT IS PROPRIETARY TO TXGA INDUSTRIAL ELECTRONICS(S.Z)CO.,LTD AND SHOULD NOT BE USED WITHOUT WRITTEN PERMISSION	

1 2 3 4 5 6 7 8

REV	LOCATIONS	DESCRIPTION	DATE	REVISED	APPD

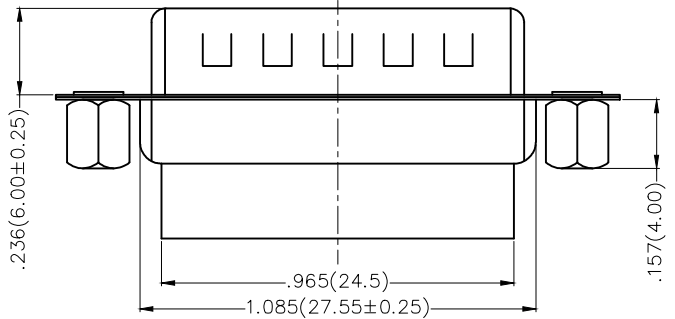
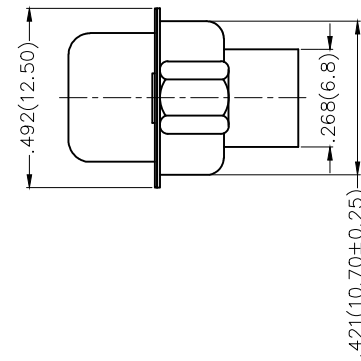
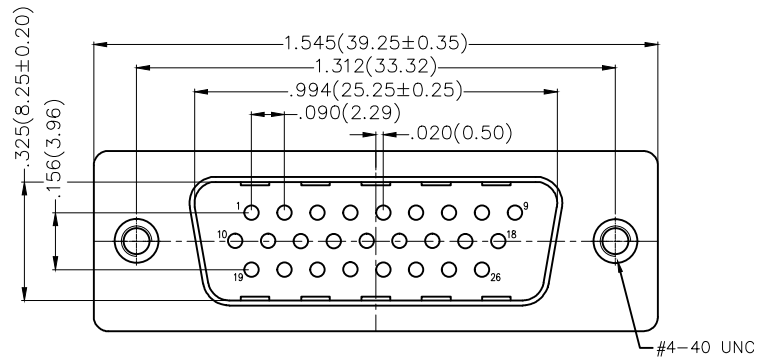
**SPECIFICATIONS**

**Electrical**

Current Rating: 3A AC(rms)/DC  
Voltage Rating: 250V AC(rms)/DC  
Contact Resistance: 30 mΩ Max  
Insulation Resistance: 1000 MΩ MIN  
Withstanding Voltage: 500V AC r.m.s  
Temperature Range—Operating: -55°C~+105°C

**Material and Plating**

Housing: PBT (UL 94V-0)  
Front Shell: Spcc/ Nickel plated  
Back Shell: Spcc/ Tin plated  
Nut: Copper alloy/ Nickel plated



**Ordering Information**

FDB 26 37 — M0 T S 0 00 XX K B  
1 2 3 4 5 6 7 8 9

1   Category FDB- D-SUB	2   Circuits 26	3   Distinction No. 37	4   Type M0—Male	5   Assembly Layout T—Terminal type
6   Entry Angle S—180° Vertical	7   Color—Resin K6—Black U1—Blue	8   Packaging K—Tray	9   Distinction Type B—B Type	

 THIRD ANGLE PROJECTION	GENERAL TOLERANCES (UNLESS SPECIFIED)		APPROVE BY FRANK	DATE 28/DEC/18	PART NO. FDB2637—MOTS000XXKB	ITEM NO. FDB2637	 Leader Of Industry
	DESIGN UNITS Inch (metric)	X.±.012(0.30)	X.±5'	CHECKED BY CHERRY	DATE 28/DEC/18	TITLE D—SUB Connector 26Circuits Terminal type Male	
SCALE 5:1	SIZE A4	X.XX±.008(0.20)	.X'±2'	DRAWN BY KATE	DATE 28/DEC/18	THIS DRAWING CONTAINS INFORMATION THAT IS PROPRIETARY TO TXGA INDUSTRIAL ELECTRONICS(S.Z)CO.,LTD AND SHOULD NOT BE USED WITHOUT WRITTEN PERMISSION	
		X.XX±.006(0.15)	.XX'±1'			REV 0	SHEET NO. 1/1
		X.XXX±.004(0.10)	.XXX'±0.5'				

REV	LOCATIONS	DESCRIPTION	DATE	REVISED	APPD

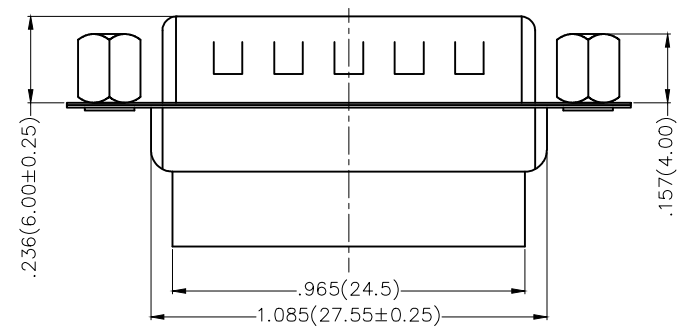
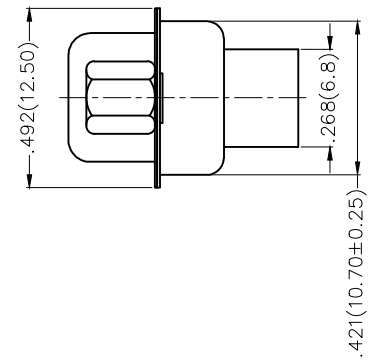
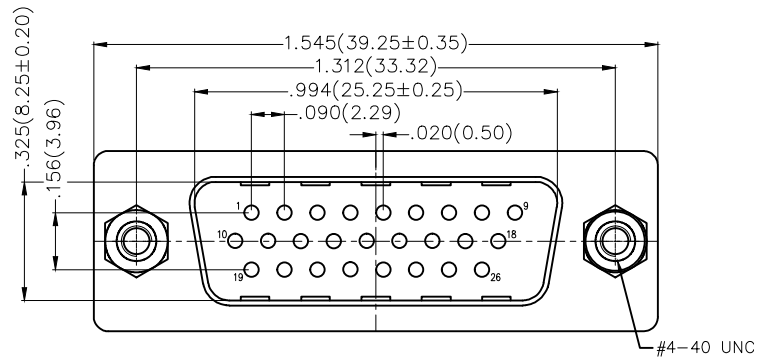
**SPECIFICATIONS**

**Electrical**

Current Rating: 3A AC(rms)/DC  
Voltage Rating: 250V AC(rms)/DC  
Contact Resistance: 30 mΩ Max  
Insulation Resistance: 1000 MΩ MIN  
Withstanding Voltage: 500V AC r.m.s  
Temperature Range—Operating: -55°C~+105°C

**Material and Plating**

Housing: PBT (UL 94V-0)  
Front Shell: Spcc/ Nickel plated  
Back Shell: Spcc/ Tin plated  
Nut: Copper alloy/ Nickel plated



**Ordering Information**

FDB 26 37 — M0 T S 0 00 XX K C  
1 2 3 4 5 6 7 8 9

1   Category FDB- D-SUB	2   Circuits 26	3   Distinction No. 37	4   Type M0—Male	5   Assembly Layout T—Terminal type
6   Entry Angle S—180° Vertical	7   Color—Resin K6—Black U1—Blue	8   Packaging K—Tray	9   Distinction Type C—C Type	

 THIRD ANGLE PROJECTION	GENERAL TOLERANCES (UNLESS SPECIFIED)		APPROVE BY FRANK	DATE 28/DEC/18	PART NO. FDB2637—MOTS000XXKC	ITEM NO. FDB2637	 Leader Of Industry
	DESIGN UNITS Inch (metric)	X.±.012(0.30)	X.±5'	CHECKED BY CHERRY	DATE 28/DEC/18	TITLE D—SUB Connector 26Circuits Terminal type Male	
SCALE 5:1	SIZE A4	X.XX±.006(0.15)	.XX±1'	DRAWN BY KATE	DATE 28/DEC/18	THIS DRAWING CONTAINS INFORMATION THAT IS PROPRIETARY TO TXGA INDUSTRIAL ELECTRONICS(S.Z)CO.,LTD AND SHOULD NOT BE USED WITHOUT WRITTEN PERMISSION	