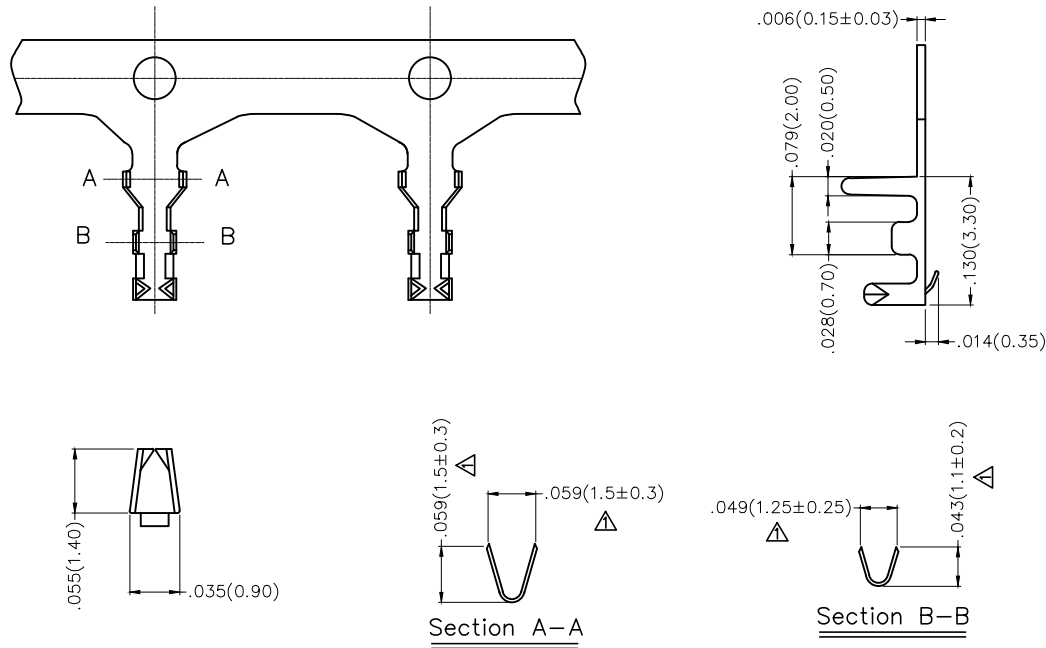


REV	LOCATIONS	DESCRIPTION	DATE	REVISOR	APPD
1	△	Size changes	26/APR/20	KATE	CHERRY

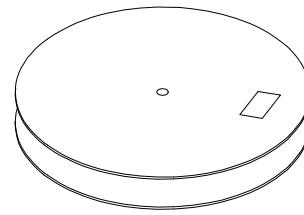
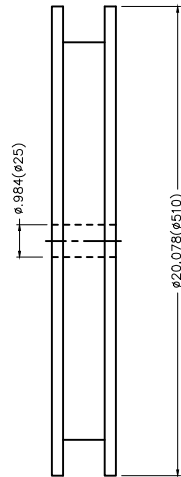
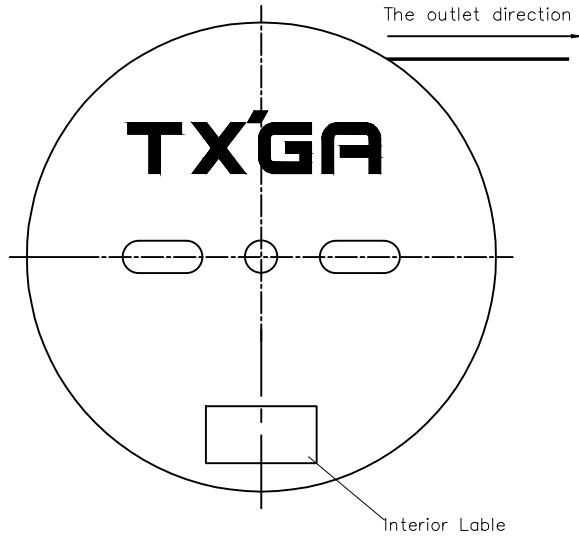
Electrical

Material: Phosphor Bronze C5191
 All Corners and Radll Have a Maximum Radius of 0.1mm unless Otherwise Specified
 Plating: Tin-Plated
 Wire Range: 32AWG~28AWG
 Applicable Housing: FHG12502Series
 Minimum Order Quantity : 20,000 PCS

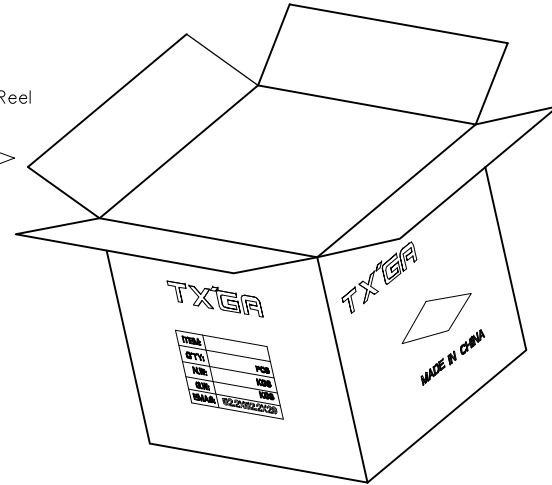


 THIRD ANGLE PROJECTION	GENERAL TOLERANCES (UNLESS SPECIFIED)		APPROVE BY FRANK	DATE 25/JUN/13	PART NO. FT12501-F2H	ITEM NO. FT12501	 Leader Of Industry
	DESIGN UNITS Inch (metric)	X.±.012(0.30)	X.±5'	CHECKED BY JACOB	DATE 25/JUN/13	TITLE Wire to Board Pitch 1.25mm(Terminal)	
SCALE 5:1	SIZE A4	X.XX±.008(0.20)	X.X±2'	DRAWN BY CHERRY	DATE 25/JUN/13	THIS DRAWING CONTAINS INFORMATION THAT IS PROPRIETARY TO TXGA INDUSTRIAL ELECTRONICS(S.Z)CO.,LTD AND SHOULD NOT BE USED WITHOUT WRITTEN PERMISSION	
		X.XX±.006(0.15)	.XX±1'			REV 1	SHEET NO. 1/2
		X.XXX±.004(0.10)	.XXX±0.5'				

REV	LOCATIONS	DESCRIPTION	DATE	REVISER	APPD



20,000Pcs/Reel



<p>THIRD ANGLE PROJECTION</p>	GENERAL TOLERANCES (UNLESS SPECIFIED)		APPROVE BY	DATE	PART NO.	ITEM NO.	<p>Leader Of Industry</p>
	X.±.012(0.30)	X.'±5'	FRANK	25/JUN/13	FT12501-F2H	FT12501	
	X.X±.008(0.20)	.X'±2'	CHECKED BY	DATE	TITLE		REV 1 SHEET NO. 2/2
	X.XX±.006(0.15)	.XX'±1'	JACOB	25/JUN/13	Wire to Board Pitch 1.25mm(Terminal)		
SCALE	SIZE	X.XXX±.004(0.10)	.XXX'±0.5'	DRAWN BY	DATE	THIS DRAWING CONTAINS INFORMATION THAT IS PROPRIETARY TO TXGA INDUSTRIAL ELECTRONICS(S.Z)CO.,LTD AND SHOULD NOT BE USED WITHOUT WRITTEN PERMISSION	
5:1	A4			CHERRY	25/JUN/13		