

REV	LOCATIONS	DESCRIPTION	DATE	REVISER	APPD
1	△	Structural changes	24/AUG/20	KATE	CHERRY

SPECIFICATIONS

Electrical

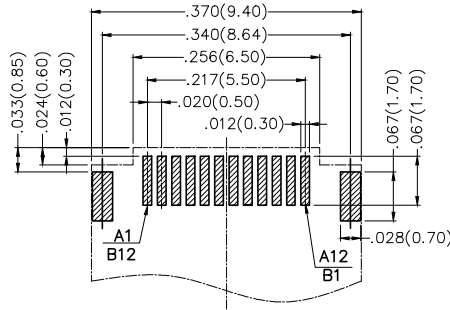
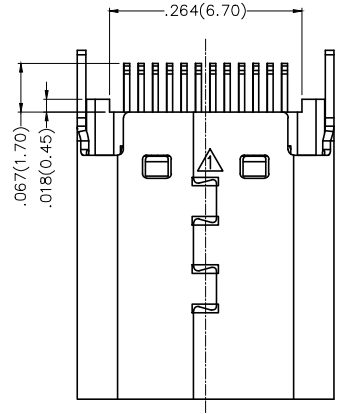
Current Rating: 5.0A AC(rms)/DC
Voltage Rating: 5V AC(rms)/DC
Contact Resistance: 40 mΩ Max
Withstanding Voltage: 100V AC r.m.s
Insulation Resistance: 100 MΩ Min
Temperature Range-Operating: -25°C~+85°C

Mechanical

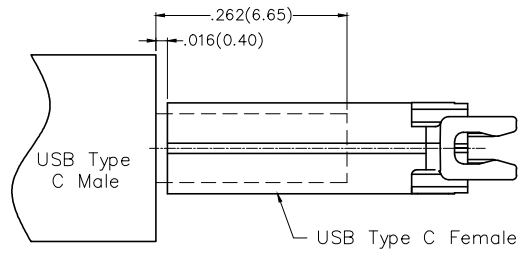
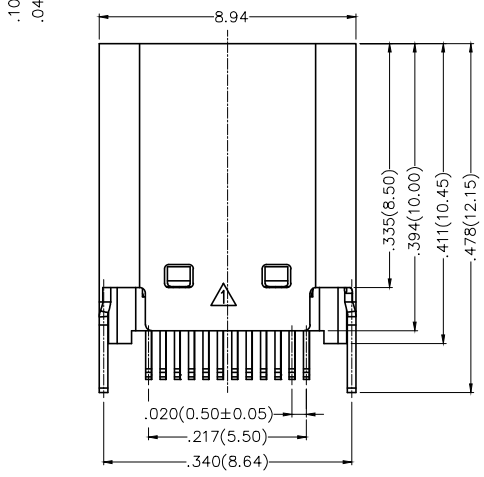
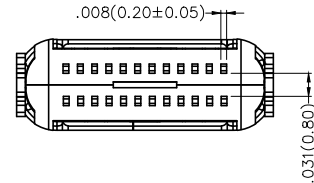
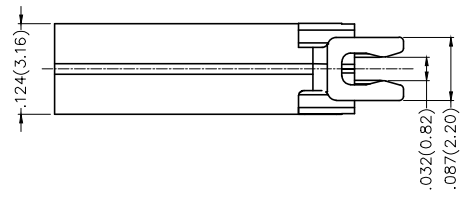
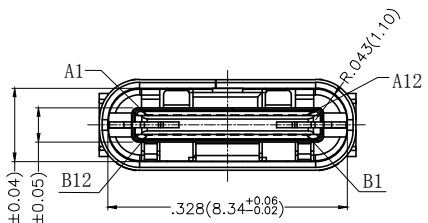
Insertion Force: 5~20N
Withdrawal Force: 8~20N
Durability: 10,000 Cycles

Material and Plating

Housing: LCP (UL 94V-0) Black
Contact: Copper Alloy/ Gold Plated
Shell: Stainless steel/ Nickel Plated
MID Plate: Stainless steel/ Clear only
EMI Plate: Stainless steel/ Nickel Plated



Recommended P.C.Board Layout
General Tolerances: ±0.05mm



After assembly

Circuits	A	Circuits	B
1	GND	12	GND
2	SSTXP1	11	SSRXP1
3	SSTXN1	10	SSRXN1
4	VBUS	9	VBUS
5	CC1	8	SBU2
6	DP1	7	DN2
7	DN1	6	DP2
8	SBU1	5	CC2
9	VBUS	4	VBUS
10	SSRXN2	3	SSTXN2
11	SSRXP2	2	SSTXP2
12	GND	1	GND

 THIRD ANGLE PROJECTION	GENERAL TOLERANCES (UNLESS SPECIFIED) X.±.012(0.30) X.±5° X.X±.008(0.20) X.±2° X.XX±.006(0.15) X.X±1° X.XXX±.004(0.10) X.XX±0.5°		APPROVE BY FRANK CHECKED BY CHERRY DRAWN BY LXF	DATE 21/APR/17 DATE 21/APR/17 DATE 21/APR/17	PART NO. FUS608-FCSK6L TITLE USB C-type 180° Vertical Female(SMT)(3.1)	ITEM NO. FUS608 REV 1	SHEET NO. 1/1	 TXGA Leader Of Industry		
	DESIGN UNITS Inch (metric)	SCALE 5:1	SIZE A4	THIS DRAWING CONTAINS INFORMATION THAT IS PROPRIETARY TO TXGA INDUSTRIAL ELECTRONICS(S,Z)CO.,LTD AND SHOULD NOT BE USED WITHOUT WRITTEN PERMISSION						